

Jesusita Incident

CA-LPF-1479



INCIDENT ACTION PLAN

OPERATIONAL PERIOD

May 9 – May 10, 2009

0700-0700



UNIFIED COMMAND

Los Padres National Forest
Santa Barbara County Fire Dept
Santa Barbara City Fire Dept
Montecito Fire Dept
CAL FIRE

INCIDENT OBJECTIVES	1. Incident Name JESUSITA	2. Date May 8, 2009	3. Time 2000
4. Operational Period 0700 - 0700 May 9 - 10, 2009			
5. General Control Objectives for the Incident (include alternatives) Control Objectives: Protect infrastructure as need dictates. Keep fire East of Gap Fire Footprint West of Franklin Ridge North of State Highway 192 South of Camino Cielo Management Objectives: * Safety of incident personnel and the public is the #1 priority. * Maintain positive relations with the public, cooperators, and elected officials. * Provide for orderly repopulation of evacuated areas when it can be safely achieved. * Ensure accurate and timely release of information. * Protect natural, cultural, and historic resources. * Keep costs commensurate with values at risk.			
6. Weather Forecast for Period Red Flag Warning in effect until 1000 PDT. Sunny/Clear except haze and trapped smoke in Branch II. Highs 68 to 80. Lows 52 to 65. Min Humidity 15 to 25 percent except Branch II - Min Humidity 35 to 50 percent. Max Humidity 25 percent in Branch IV, otherwise 55 to 95 percent. Winds Northeast 5 to 15 mph with gusts 30 mph in the morning and at night and upslope/west 3 to 8 mph with gusts 15 mph in the afternoon and evening.			
7. General Safety Message Cal-Trans personnel will be working on foot on the road shoulder between mile markers 25 - 30 on Highway 154. Vehicle traffic should slow down and be alert for these work crews. Rehydration is the key, drink plenty of water. Slow down while driving, don't cut the blind corners. Watch for rolling rocks.			
8. Attachments (mark if attached)			
<input checked="" type="checkbox"/> Organization List - ICS 203 <input checked="" type="checkbox"/> Medical Plan - ICS 206 <input checked="" type="checkbox"/> (Other) <input checked="" type="checkbox"/> Div. Assignment Lists - ICS 204 <input checked="" type="checkbox"/> Incident Map <input type="checkbox"/> <input checked="" type="checkbox"/> Communications Plan - ICS 205 <input checked="" type="checkbox"/> Traffic Plan <input type="checkbox"/>			
9. Prepared by (Planning Section Chief) Jim Ferguson <i>JR Ferguson</i> BSCI	10. Approved by (Incident Commander) Joe Waterman <i>Joe Waterman</i>		

ORGANIZATION ASSIGNMENT LIST ICS 203			1. INCIDENT NAME	2. DATE PREPARED	3. TIME PREPARED
			Jesusita	5/08/2009	1800
			4. OPERATIONAL PERIOD (DATE/TIME)		
5. INCIDENT COMMANDER AND STAFF			05/09/09 – 05/10/09 0700-0700		
POSITION		NAME	9. OPERATIONS SECTION		
INCIDENT COMMANDER	Joe Watermam	Cal Fire Team 4	CHIEF - day	Phil Venaris	
INCIDENT COMMANDER	Dana D'Andrea	LPF	CHIEF - night	Jeff Brand	
INCIDENT COMMANDER	Mark Schmitt	SBC	CHIEF - night		
INCIDENT COMMANDER	Pat McElroy	STB	Planning/OPS	Mark Kendall / Rich Lopez	
INCIDENT COMMANDER	Kevin Wallace	MTO	a. BRANCH I - DIVISIONS/GROUPS		
DEPUTY	Kelley Gouette		BRANCH DIRECTOR	C. Childers (Day)/F. Royos (Night)	
DEPUTY (T)			DIVISION/GROUP	A	Mike Mc Coy
SAFETY OFFICER	Dave Stonum		DIVISION/GROUP	C	Frank Chacon / Brandon Paige
INFORMATION OFFICER	Mike Carr		DIVISION/GROUP	E	Corey Stowe / Ted Hall (T)
LIAISON OFFICER	Steve Gasaway		DIVISION/GROUP	F	Jorge Camargo
6. AGENCY REPRESENTATIVES			DIVISION/GROUP	Romero Dozer	Robert Neumann
AGENCY	NAME		b. BRANCH II - DIVISIONS/GROUPS		
OES	Ishmael Messer		BRANCH DIRECTOR	B. Rodello (Day)/K. French (Night)	
Ventura	Von Miller		DIVISION/GROUP	G	Craig Kinoshita
Santa Barbara County	Gerry Pittney		DIVISION/GROUP	I	Matthew Farris / Joseph Tieso (T)
Santa Barbara City	Tim Manning		DIVISION/GROUP	L	Chip Hickman
U.S.F.S.	John Bridgwater		DIVISION/GROUP	O	David Kay
L.A. County	Don De Young		DIVISION/GROUP	Hope Contingency	Abdul Ahmad
CCC	Jim Kastner		c. BRANCH III - DIVISIONS/GROUPS		
Goleta Water	Shawn Dollar		BRANCH DIRECTOR	Enos/Navarro(T) (Day)/ Kaslin (Night)	
7. PLANNING SECTION			DIVISION/GROUP	P	Jerry Burke
CHIEF	Pam Linstedt		DIVISION/GROUP	R	Roland Garcia
DEPUTY	Jim Ferguson		DIVISION/GROUP	BR III Structure	Jack Wise
RESOURCES UNIT DAY	Ralph Gladwin		d. BRANCH IV - DIVISIONS/GROUPS		
RESOURCES UNIT NIGHT	Tony Giacomini		BRANCH DIRECTOR	VonTillo/Davis (Day)/ Bailey (Night)	
SITUATION UNIT	Phyllis Banducci		DIVISION/GROUP	T	Michael Sebastian
DOCUMENTATION UNIT	Dennis Cooper		DIVISION/GROUP	Z	Tom Zeulner
DEMOBILIZATION UNIT	Brook Darley		DIVISION/GROUP	BR IV Structure	Scott Goodwin
TECHNICAL SPECIALISTS			DIVISION/GROUP		
	IMET	Rob Balfour	DIVISION/GROUP		
	Training	Michael Murphy	e. STAGING		
	GIS	Elsa Hucks / Albert Lau	College Staging	Tim Bingham	
	FBAN	Bill Baxter / Drew Smith	Mission Staging	Mark Dorch / Edward Facio (T)	
	Damage Insp		f. AIR OPERATIONS BRANCH		
	Archaeologist	Steve Galbraith	AIR OPERATIONS BR. DIR.	John Richardson	
	Resource Advisor	Kyle Kinsport	AIR ATTACK SUPERVISOR	Mark Gradek	
8. LOGISTICS SECTION			AIR SUPPORT SUPERVISOR	Scott Packwood	
CHIEF	Dawn Pederson Breanna Buchanan (T), Ken Lowe (T)		10. FINANCE/ADMINISTRATION SECTION		
SUPPLY UNIT	Jim Vierra		CHIEF	Deanna Lyman	
FACILITIES UNIT	Wendye Stuller		TIME UNIT	Leslie Marg	
GROUND SUPPORT UNIT	Steve Langston		PROCUREMENT UNIT	Mike Abarca	
COMMUNICATIONS	Alan Knopp		COMPENSATION/CLAIMS	Teri Accurso	
MEDICAL UNIT	Larry Wondercheck		COST UNIT	Michael Borelli	
FOOD UNIT	Blair Gillespie		FEDERAL TIME UNIT	Judy Reynolds	
ICS 203			PREPARED BY (RESOURCES UNIT) Tony Giacomini		

DIVISION ASSIGNMENT LIST			1. Branch I		2. Division/Group DIV A		
3. Incident Name Jesusita			4. Operational Period Date: 5/09/09 - 5/10/09 Time: 0700 - 0700				
5. Operations Personnel							
Operations Chief Day Night		Phil Veneris Jeff Brand		Division/Group Supervisor		Mike Mc Coy	
Branch Director Day Night		Christian Childers Frank Royos		Air Attack Supervisor No.		Mark Gradek	
6. Resources Assigned this Period							
Strike Team/Task Force/ Resource Designator	Leader	Number Persons	Trans. Needed	Drop Off PT./Time	Pick Up PT./Time	Check In	Check Out
READ	Kerry Kellogg	1	N	192 @ Sheffield Res			
ARCH	Lisa Cipolla	1	N	192 @ Sheffield Res			
ARCH	Steve Galbraith	1	N	192 @ Sheffield Res			
CULS	Pete Zavalla	1	N	192 @ Sheffield Res			
STC CNF 6632C	Jason Kraling	16	N	192 @ Sheffield Res	0700-1900		
STC XSB 1521C	Stan Hart	17	N	192 @ Sheffield Res			
STC BDU 9350C	Mary Stock	22	N	192 @ Sheffield Res			
STC RRU 9310C	Steve Gallegos	16	N	192 @ Sheffield Res			
STG RRU 9382G		32	N	192 @ Sheffield Res			
STG SLU 9396G	Woody Bousca	47	N	192 @ Sheffield Res			
STG BDU 9371G	Bill Otterman	30	N	192 @ Sheffield Res			
CRW VNC CC1-1	Fred Burris	18	N	192 @ Sheffield Res	0700-1900		
CRW Vandenberg	Hendricks	18	N	192 @ Sheffield Res	0700-1900		
CRW Fulton IHC	See Check-In		N	192 @ Sheffield Res	0700-1900		
W/T E-153 A & G	Young	2	N	192 @ Sheffield Res			
W/T AFV 5	B. Burch	1	N	192 @ Sheffield Res	0700-1900		
W/T E-144 United	S. Bouche	2	N	192 @ Sheffield Res			
W/T SBC WT-32	See Check-In		N	192 @ Sheffield Res			
W/T E-179 A-1 Water	M. Thomas	2	N	192 @ Sheffield Res			
7. Control Operations Construct line and hold. Structure Defense Mop up around structures.							
8. Special Instructions Red Flag Warning. Hydrate, hydrate, hydrate! Employ safe driving practices							
9. Division/Group Communication Summary							
Function	Frequency	System	Channel	Function	Frequency	System	Channel
Command Valley floor to ridge top	RX 168.1000 N TX 170.4500 N Tone 123.0	King NIFC	NIFC CMD 2	Command Ridge top and North	RX 170.0125 N TX 165.2500 N Tone 123.0	King NIFC	NIFC CMD 9
Tactical Div/Group	RX 168.0500 N TX 168.0500 N	King NIFC	NIFC TAC 1	Air to Ground	RX 167.9500 N TX 167.9500 N	King NIFC	BLM Air/Ground
Prepared by (Resource Unit Ldr.) Tony Giacomini		Approved by (Planning Sect. Ch.) Pam Linstedt <i>Pam Linstedt</i>			Date 5/08/09		Time 1900 hrs

DIVISION ASSIGNMENT LIST				1. Branch I		2. Division/Group DIV E	
3. Incident Name Jesusita				4. Operational Period Date: 5/09/09 - 5/10/09 Time: 0700 - 0700			
5. Operations Personnel							
Operations Chief Day Night		Phil Veneris Jeff Brand		Division/Group Supervisor		Corey Stowe / Ted Hall (T)	
Branch Director Day Night		Christian Childers Frank Royos		Air Attack Supervisor No.		Mark Gradek	
6. Resources Assigned this Period							
Strike Team/Task Force/ Resource Designator	Leader	Number Persons	Trans. Needed	Drop Off PT./Time	Pick Up PT./Time	Check In	Check Out
STA XLE 1281A	Gillaspie	1	N	192 @ Sheffield Res			
STA XLG 1360A	Frank Mead	21	N	192 @ Sheffield Res			
STA TBA			N	192 @ Sheffield Res			
STC MVU 9330C	Kremensky	20	N	192 @ Sheffield Res			
STC BDF 6601C	Randy Vakovich	22	N	192 @ Sheffield Res	0700-1900		
STC CNF 6631C	Tim Carey	17	N	192 @ Sheffield Res	0700-1900		
STG BDU 9388G	Jon Wight	36	N	192 @ Sheffield Res			
STG BDU 9370G	Marc Engel	33	N	192 @ Sheffield Res			
STG TUU 9473G	John Silva	35	N	192 @ Sheffield Res			
STG SLU 9395G	Mark Parry	33	N	192 @ Sheffield Res			
CRW Los Padres IHC	See Check-In		N	192 @ Sheffield Res	0700-1900		
CRW Arroyo Grande	Mike Hickey	24	N	192 @ Sheffield Res	0700-1900		
7. Control Operations Protect structures. Direct Line construction up Cold Springs towards Div. A							
8. Special Instructions Red Flag Warning. Hydrate, hydrate, hydrate! Employ safe driving practices							
9. Division/Group Communication Summary							
Function	Frequency	System	Channel	Function	Frequency	System	Channel
Command Valley floor to ridge top	RX 168.1000 N TX 170.4500 N Tone 123.0	King NIFC	NIFC CMD 2	Command Ridge top and North	RX 170.0125 N TX 165.2500 N Tone 123.0	King NIFC	NIFC CMD 9
Tactical Div/Group	RX 154.295 W TX 154.295 W	King NIFC	WHITE 3	Air to Ground	RX 167.9500 N TX 167.9500 N	King NIFC	BLM Air/Ground
Prepared by (Resource Unit Ldr.) Tony Giacomini		Approved by (Planning Sect. Ch.) Pam Linstedt <i>Pam Linstedt</i>		Date 5/08/09		Time 1900 hrs	

DIVISION ASSIGNMENT LIST			1. Branch II		2. Division/Group DIV L		
3. Incident Name Jesusita			4. Operational Period Date: 5/09/09 - 5/10/09 Time: 0700 - 0700				
5. Operations Personnel							
Operations Chief Day Night		Phil Veneris Jeff Brand		Division/Group Supervisor		Chip Hickman	
Branch Director Day Night		Bob Rodello Ken French		Air Attack Supervisor No.		Mark Gradek	
6. Resources Assigned this Period							
Strike Team/Task Force/ Resource Designator	Leader	Number Persons	Trans. Needed	Drop Off PT./Time	Pick Up PT./Time	Check In	Check Out
STA OES 4800A		20	N	Botanical Gardens			
STA OES 4802A	David Ray	21	N	Botanical Gardens			
STA XLB 1242A	Kenneth Douglass	22	N	Botanical Gardens			
STA XOR 1421A	Tom Christopher	21	N	Botanical Gardens			
STA OES 6820A	Sherman / Garber (T)	20	N	Botanical Gardens			
STA OES 2804A	Harvey	21	N	Botanical Gardens			
STC ANF 1600C	James Parker	26	N	Botanical Gardens			
STC			N	Botanical Gardens			
ENG CNF 37	Thomas Smith	5	N	Botanical Gardens			
ENG ANF 23	Herman Garcia	5	N	Botanical Gardens			
ENG BLM 5444	R. Picazo	5	N	Botanical Gardens			
ENG RID 424	Nez Jarrett	3	N	Botanical Gardens			
ENG ELD 4442	Kip Goff	4	N	Botanical Gardens			
STG MVU 9376G	Tom Klinas	31	N	Botanical Gardens			
STG TUU 9472G	Atilano Martinez	33	N	Botanical Gardens			
W/T E-147 Jardines	Jardines	2	N	Botanical Gardens			
W/T E-150 Aqua 3	Cook	2	N	Botanical Gardens			
7. Control Operations Construct line and hold. Structure Defense Mop up around structures.							
8. Special Instructions Red Flag Warning. Hydrate, hydrate, hydrate! Employ safe driving practices.							
9. Division/Group Communication Summary							
Function	Frequency	System	Channel	Function	Frequency	System	Channel
Command	RX 168.1000 N TX 170.4500 N Tone 123.0	King NIFC	NIFC CMD 2	Logistics	RX 170.0125 N TX 165.2500 N Tone 123.0	King NIFC	NIFC CMD 9
Tactical Div/Group	RX 164.1375 N TX 164.1375 N	King NIFC	NIFC TAC 4	Air to Ground	RX 167.9500 N TX 167.9500 N	King NIFC	BLM Air/Ground
Prepared by (Resource Unit Ldr.) Tony Giacomini		Approved by (Planning Sect. Ch.) Pam Linstedt <i>Pam Linstedt</i>		Date 5/08/09		Time 1900 hrs	

DIVISION ASSIGNMENT LIST			1. Branch II		2. Division/Group DIV O				
3. Incident Name Jesusita			4. Operational Period Date: 5/09/09 - 5/10/09 Time: 0700 - 0700						
5. Operations Personnel									
Operations Chief Day Night		Phil Veneris Jeff Brand		Division/Group Supervisor		David Kay			
Branch Director Day Night		Bob Rodello Ken French		Air Attack Supervisor No.		Mark Gradek			
6. Resources Assigned this Period									
Strike Team/Task Force/ Resource Designator		Leader		Number Persons	Trans. Needed	Drop Off PT./Time	Pick Up PT./Time	Check In	Check Out
SOF Day		Bill Lynch		1	N	For entire branch			
SOF Night		Scott Tavalero		1	N	For entire branch			
STA OES 5801A		Jeff Cole		20	N	DP 2			
STA OES 1860A		Mastain / Hirsch (T)		21	N	DP 2			
STA OES 2803A		Ohara		22	N	DP 2			
STA LFD 1075A		Chris Syverson		21	N	DP 2			
STC SLU 9341C		Felix Camacho		19	N	DP 2			
STC Jesusita #1		Steve Wilson		21	N	DP 2	0700-1900		
STC XBO 6227C		Howard Bennett		16	N	DP 2			
STC					N	DP 2			
STG BDU 9384G		Luis Ocampo		33	N	DP 2			
W/T E-146 A-1 Water		Leroy Brown		1	N	DP 2			
W/T E-148 Kritz Ex 1		Ron Kritz		2	N	DP 2			
7. Control Operations Construct line and hold. Structure Defense Mop up around structures.									
8. Special Instructions Red flag warning. Hydrate, hydrate, hydrate! Employ safe driving practices.									
9. Division/Group Communication Summary									
Function	Frequency	System	Channel	Function	Frequency	System	Channel		
Command Valley floor to ridge top	RX 168.1000 N TX 170.4500 N Tone 123.0	King NIFC	NIFC CMD 2	Command Ridge top and North	RX 170.0125 N TX 165.2500 N Tone 123.0	King NIFC	NIFC CMD 9		
Tactical Div/Group	RX 166.7250 N TX 166.7250 N	King NIFC	NIFC TAC 5	Air to Ground	RX 167.9500 N TX 167.9500 N	King NIFC	BLM Air/Ground		
Prepared by (Resource Unit Ldr.) Tony Giacomini			Approved by (Planning Sect. Ch.) Pam Linstedt <i>Pam Linstedt</i>			Date 5/08/09		Time 1900 hrs	

DIVISION ASSIGNMENT LIST			1. Branch III		2. Division/Group DIV R										
3. Incident Name Jesusita			4. Operational Period Date: 5/09/09 - 5/10/09 Time: 0700 - 0700												
5. Operations Personnel															
Operations Chief Day Night		Phil Veneris Jeff Brand		Division/Group Supervisor		Roland Garcia									
Branch Director Day Night		Enos / Navarro (T) Michael Kaslin		Air Attack Supervisor No.		Mark Gradek									
6. Resources Assigned this Period															
Strike Team/Task Force/ Resource Designator		Leader		Number Persons	Trans. Needed	Drop Off PT./Time	Pick Up PT./Time	Check In	Check Out						
SOF	Day	Matthew Luchetta		1	N	For entire branch									
SOF	Night	Curtis Vincent		1	N	For entire branch									
STC AEU 9270C		Charles Blankenheim		21	N	Hwy 154 @ Foothill									
STC XSH 3150C		Jon Bauer		18	N	Hwy 154 @ Foothill									
STC SLU 9340C		Bill Fisher		16	N	Hwy 154 @ Foothill									
STC					N	Hwy 154 @ Foothill									
AREP		Scott Hale		1	N	Hwy 154 @ Foothill									
STG LAC 1175G		Larry tucker		31	N	Hwy 154 @ Foothill									
STG LAC 1181G		Ron Reed		33	N	Hwy 154 @ Foothill									
STG LAC 1178G		Ted Hall		31	N	Hwy 154 @ Foothill									
STG LAC 1174G		Mark Collet		31	N	Hwy 154 @ Foothill									
STL MVU 9338L		Gary Will		5	N	Hwy 154 @ Foothill									
STL RRU 9318L		John White		9	N	Hwy 154 @ Foothill									
W/T E-242 North Tree		Chris McMaster		2	N	Hwy 154 @ Foothill									
W/T E-241 North Tree		Nate Brown		2	N	Hwy 154 @ Foothill									
7. Control Operations Construct line and hold. Structure Defense Mop up around structures.															
8. Special Instructions Red flag warning Hydrate, hydrate, hydrate! Employ safe driving practices.															
9. Division/Group Communication Summary															
Function		Frequency		System		Channel		Function		Frequency		System		Channel	
Command Valley floor to ridge top		RX 168.1000 N TX 170.4500 N Tone 123.0		King NIFC		NIFC CMD 2		Command Ridge top and North		RX 170.0125 N TX 165.2500 N Tone 123.0		King NIFC		NIFC CMD 9	
Tactical Div/Group		RX 166.7750 N TX 166.7750 N		King NIFC		NIFC TAC 6		Air to Ground		RX 167.9500 N TX 167.9500 N		King NIFC		BLM Air/Ground	
Prepared by (Resource Unit Ldr.) Tony Giacomini				Approved by (Planning Sect. Ch.) Pam Linstedt				Date 5/08/09				Time 1900 hrs			

DIVISION ASSIGNMENT LIST			1. Branch IV		2. Division/Group DIV T		
3. Incident Name Jesusita			4. Operational Period Date: 5/09/09 – 5/10/09 Time: 0700 - 0700				
5. Operations Personnel							
Operations Chief Day Night		Phil Veneris Jeff Brand		Division/Group Supervisor		Michael Sebastian	
Branch Director Day Night		VonTillo / Davis Christopher Bailey		Air Attack Supervisor No.		Mark Gradek	
6. Resources Assigned this Period							
Strike Team/Task Force/ Resource Designator	Leader	Number Persons	Trans. Needed	Drop Off PT./Time	Pick Up PT./Time	Check In	Check Out
SOF Day	Matthew Luchetta	1	N	For entire branch			
SOF Night	Curtis Vincent	1	N	For entire branch			
FOBS	Paule Medeiros	1	N				
STC BTU 9210C	Scott Lingren	22	N				
STC			N				
STG AEU 9276G	Jose Esparza	27	N				
STG LAC 1183G	Lance Schoeman	32	N				
STG SLU 9397G	Bruce Fosdike	30	N				
CRW			N				
CRW			N				
DOZB	Nicholas Perricelli	1	N				
STL TUU 9418L	Alan Sheer	4	N				
W/T E-177 Alexander	Bobby Alexander	2	N				
W/T E-178 Aqua 1	Cook	2	N				
7. Control Operations Construct line and hold. Drop off point: 154 @ E. Camino Cielo / San Marco's Station. Structure Defense Mop up around structures.							
8. Special Instructions Red flag warning Hydrate, hydrate, hydrate! Employ safe driving practices.							
9. Division/Group Communication Summary							
Function	Frequency	System	Channel	Function	Frequency	System	Channel
Command Valley floor to ridge top	RX 168.1000 N TX 170.4500 N Tone 123.0	King NIFC	NIFC CMD 2	Command Ridge top and North	RX 170.0125 N TX 165.2500 N Tone 123.0	King NIFC	NIFC CMD 9
Tactical Div/Group	RX 154.265 W TX 154.265 W	King NIFC	WHITE 2	Air to Ground	RX 167.9500 N TX 167.9500 N	King NIFC	BLM Air/Ground
Prepared by (Resource Unit Ldr.) Tony Giacomini		Approved by (Planning Sect. Ch.) Pam Linstedt <i>Pam Linstedt</i>		Date 5/08/09		Time 1900 hrs	

16

DIVISION ASSIGNMENT LIST				1. Branch IV		2. Division/Group DIV Z	
3. Incident Name Jesusita				4. Operational Period Date: 5/09/09 - 5/10/09 Time: 0700 - 0700			
5. Operations Personnel							
Operations Chief Day Night		Phil Veneris Jeff Brand		Division/Group Supervisor		Tom Zeulner	
Branch Director Day Night		VonTillo / Davis Christopher Bailey		Air Attack Supervisor No.		Mark Gradek	
6. Resources Assigned this Period							
Strike Team/Task Force/ Resource Designator		Leader	Number Persons	Trans. Needed	Drop Off PT./Time	Pick Up PT./Time	Check In Check Out
SOF Day		Matthew Luchetta	1	N	For entire branch		
SOF Night		Curtis Vincent	1	N	For entire branch		
DOZB		Larry Peabody	1	N			
DOZB		Derek Wheeler	1	N			
STC XCA 4050C		Jim Rosbrook	19	N			
STC XSN 2394C		Wulff Reinhold	18	N			
STG MVU 9386G		Nick Clements	34	N			
STG FKU 9474G		Ed Clayton	34	N			
STG MEU 9111G		Brian Bishop	34	N			
CRW SNF Kings River		Eleazar Martinez Jr.	20	N		0700-1900	
CRW SBC C1				N			
STL TCU 9448L		Mark Sherrill	5	N			
STL LNU 9140L		Chris Vallerga Jr	6	N			
W/T E-151 Bay Area		A. Jones	2	N			
W/T E-154 Thompson		S. Agajanian	2	N			
7. Control Operations Construct line and hold. E. Camino Cielo @ Arroyo Burro							
8. Special Instructions Red Flag Warning. Hydrate, hydrate, hydrate! Employ safe driving practices.							
9. Division/Group Communication Summary							
Function	Frequency	System	Channel	Function	Frequency	System	Channel
Command Valley floor to ridge top	RX 168.1000 N TX 170.4500 N Tone 123.0	King NIFC	NIFC CMD 2	Command Ridge top and North	RX 170.0125 N TX 165.2500 N Tone 123.0	King NIFC	NIFC CMD 9
Tactical Div/Group	RX 168.2500 N TX 168.2500 N	King NIFC	NIFC TAC 7	Air to Ground	RX 167.9500 N TX 167.9500 N	King NIFC	BLM Air/Ground
Prepared by (Resource Unit Ldr.) Tony Giacomini		Approved by (Planning Sect. Ch.) Pam Linstedt <i>Pam Linstedt</i>		Date 5/08/09		Time 1900 hrs	

DIVISION ASSIGNMENT LIST		1. Branch Law Enforcement		2. Division/Group			
3. Incident Name Jesusita Fire		4. Operational Period Date: Sat. 5-9-09 thru Sun. 5-10-09 Time: 0600 – 1800 / 1800 – 0600					
5. Operations Personnel							
Operations Chief		Division/Group Supervisor		Fotheringham			
Deputy Operations		Air Attack Supervisor No.					
Branch Director		Patterson					
6. Resources Assigned this Period							
Strike Team/Task Force/ Resource Designator	Leader	Number Persons	Trans. Needed	Drop Off PT./Time	Pick Up PT./Time		
SBSO	SBSO Lt. Robel	50	No	0600	1800		
SBPD	SBPD Lt. Mandrell	20	No	0600	1800		
CHP	CHP Lt. Greenfield	5	No	0600	1800		
UCPD	UCPD Capt. Foster	4	No	0600	1800		
SB CO. PROBATION	SBCO Probation Officer	10	No	0600	1800		
Region 1A Mutual Aid	SBPD Lt. McCaffrey	61	No	0600	1800		
Region 1 Mutual Aid	LASO Sgt.	50	No	0600	1800		
SBSO	SBSO Lt. Klapakis	50	No	1800	0600		
SBPD	SBPD Lt. Kresky	20	No	1800	0600		
CHP	CHP Sgt. Robertson	5	No	1800	0600		
UCPD	UCPD Sgt.	4	No	1800	0600		
Region 1A Mutual Aid	SBPD Lt.	61	No	1800	0600		
Region 1 Mutual Aid	LAPD Sgt.	50	No	1800	0600		
7. Control Operations							
Provide safety and security at barricades, if needed, within the evacuated areas.							
Take enforcement actions where and when appropriate.							
Assist members of the public with information related to the fire and evacuation areas.							
8. Special Instructions							
Pay attention to roadways and narrow roads							
Make sure you know where you are and know escape routes							
Keep supervisor updated on your location and status							
Evaluate the areas and location for time and speed for escape							
Command Post at Earl Warren							
Report to staging area							
9. Division/Group Communication Summary							
Function	Frequency	System	Channel	Function	Frequency	System	Channel
Command	Rx- 460.3250 Tx- 465.3250	King NIFC	SBSO-OPS2 Yellow	Logistics		King NIFC	
Tactical Div/Group		King NIFC		Air to Ground		King NIFC	
Prepared by (Resource Unit Leader) McCammon		Approved by (Planning Section Chief)		Date 5-8-2009		Time 1915 hours	

AIR OPERATIONS SUMMARY

(Expanded Form for Large Operations)

OPERATIONAL PERIOD DATE: DAY SHIFT DATE: 05/09/09

START: 0700 END: 2200

1. INCIDENT NAME: Jesusita	2. PREPARED BY: S. Packwood	3. PREPARED DATE/TIME: 05/08/09 1930
4. REMARKS (Safety Notes, Hazards, Air Operations Special Equipment, etc.): *****HIGH VOLTAGE POWERLINES within the fire perimeter running East and West***** Santa Barbara Tower; 119.700 Santa Ynez Tower: 122.800 All GPS data to be collected (degrees, minutes & decimal minutes) **Avoid aerial application of retardant or foam within 300' of waterways, bodies of water. If retardant is dropped within these areas, notify AOB/D with Lat & Long, est. of gallons, and a map. Santa Maria ATB 805-937-5248 ECC 805-938-9164 Santa Maria AAB for Air Tanker reloading		
5. TFR: A#90 Altitude: 10,000' MSL Polygon over fire Notam 9-8089		

TRACK RETARDANT DROP LOCATIONS

6. PERSONNEL	Phone	7. FREQUENCIES	AM	FM	8. FIXED-WING # Avail / Type/ Make-Model / FAA N# / Base(s)
AOBD: John Richardson	805 903-3418	AIR/AIR FW:	131.475	151.2725	AA-340
AOBD: (T) Scott Packwood	530 310-2212	AIR/AIR RW:	135.575		AA-13
ATGS: Bennett	805 895-6620	AIR/GROUND:		167.950	L-B5
ATGS: Innes		DECK:	163.100		L-55
HLCO: M. Wright / T. Caughlin	707696-3579	COMMAND			6 Type III's / 4 Type I's
ASGS: Mark Gradek	707 494-8822	RPT	RX168.100 TX170.450		1 VLAT
HEBM: Greg Bertelli (Santa Ynez)	925 407-5121	Air Guard	Tones Rx 123.0	168.625	6 on at 07:00 / 4 on at 10:00
HEBM Bill Bryant (School)	541 910-7412				Other : Cobra
HEBM Dale Douglas (Goleta)					
Night AOB/D: Dave Lopez	714 713-5679				

9. HELICOPTERS (Use Additional Sheets As Necessary)

FAA N#	TY	MAKE/MODEL	BASE	AVAIL	START	REMARKS	FAA N#	TY	MAKE/MODEL	BASE	AVAIL	START	REMARKS
VNC-6	2	Bell 205	School	0730	0800			2	COBRA	SY			A/A Map/IR
LAC-19	1	UH 60	School	0800	0800	Night Drops	63W	2	Bell 205	SY			Restricted Cat.
LAC-17	2	Bell 412	School	0800	0800	Night Drops	7PJ	2	Bell 205	SY			Restricted Cat.
SBC-308	2	Bell 205	SY	0800	0800	Night Drops	21Z	2	Bell 205	SY			Exclusive Use
SBC-309	2	Bell 205	SY	0730	0700								
CalFire 305	2	Bell 205	SY	0730	0700								
N498PT	3	AS350B	SY	0730	0800	HLCO/recon							
N22EA	3	206	SY	0730	0800	HLCO							
N265KA	1	KMAX	SY	0730	0800								
N15456	1	S-64	SY	0730	0800								
718	1	CH54	SY										
715	1	CH54	SY										

10. TASK/MISSION/ASSIGNMENT (Use ICS-220a if additional space needed; Type/Function includes: Air Tactical, Retardant, Recon, Personnel Transport, Water Dropping, etc.)

TYPE/FUNCTION	NAME OF PERSONNEL OR CARGO (if applicable) OR INSTRUCTIONS FOR TACTICAL AIRCRAFT	MISSION START	8FLY FROM	FLY TO
Air Tactical	Direct A/C operations, coordinate with Ops.	0630		Fire
Bucket support	HELICOPTERS. SUPPORT CREWS ON THE LINE.			
PAX/Cargo				
Medevac	See Medical Plan for specifics.			
Recon	IC, OSC, and SUL as requested			
Helispot Construction	Once helispot established/approved/numbered, notify Air Ops with Lat Long			
Helitack	When on fireline, be sure to follow LCES, 10s and 18s. Use Lookouts and Trigger Points.			
Mobile Retardant Base & Torch Base	Helicopter Retardant Dip Site Salvar & Via Gaitero East of Hwy 154			
Communications				

11. Helispot, Dip Site Portable Retardant Base and Sling Spot Information-

HELI-SPOTS #	DIP SITES	SLING SPOT #	DIVISION	LATITUDE	LONGITUDE	REMARKS
Santa Ynez HB				34* 36.419	120* 04.185	Helibase at Santa Ynez Airport
	Laurel Cyn.			34* 27.3	119* 36.7	Reservoir
	San Marcos			34* 27.387	119* 45.989	RETARDANT Dip Site
	School			34* 25.623	119* 41.482	Tank Refill Night Ops
	Goleta			34* 26.216	119* 52.653	Tank Refill Night Ops
H-1				34* 27.005	119* 46.191	Admin / Recon flights

SAFETY MESSAGE

INCIDENT NAME
JESUSITA

Date
Prepared
05/08/09

Time
Prepared
1800

OPERATIONAL PERIOD (DATE/TIME)
5/9-5/10/2009 0700-0700

Hydration – Rehydrate yourself by drinking plenty of water and electrolytes.

All tail gate Safety Briefings to include local fuel conditions, fire history and weather forecast.

Follow the traffic plans, slow down, drive defensively.

Use chock blocks, don't park on blind curves.

In order to have confidence in your Personal Protective Equipment, you need to be wearing it!

Anticipate increased spread rates, spotting, and active nighttime burning.

Watch out for down power lines, assume they are live and flag them.

Pay close attention to the levels of fatigue for yourself and in your personnel. Get rest and drink plenty of water!

The SAFETY of all firefighters and the public is the first concern. Property protection will NOT compromise firefighter safety.

Cal-Trans personnel will be working on foot on the road shoulder between mile markers 30 – 25 on Highway 154. Vehicle traffic should slow down and be alert for these work crews.

Ensure firefighters have good anchor points, escape routes, and safety zones. Remember LCES.

Lookout(s), Communication(s), Escape routes and Safety zone(s)

Prepared By:
Keith Callison

Approved By (Safety Officer) Dave Stonum

INCIDENT ACTION PLAN SAFETY ANALYSIS

1. Incident Name

Jesusita

2. Date & Time Prepared

5/8/09

3. Operational Period

5/09/09 0700-0700

Other Risk Analysis															
Branch	Downhill Fireline	Indirect Fireline	Underslung Fireline	Mid-slope Fireline	Frontal Assault	Anchor Point	Extreme Conditions (Spotting, Wind-driven)	Reburn Potential	Snags	LCES Mitigations	Hazard Materials	Transportation, 1 Hr +	Communications	Structure Protection	Other Risk Mitigations
BR I										LCES must be complied with. Plan for worst fire behavior this fire is capable of. PPE is a must !					Confirm that radios work before going to the line. Incident personnel supervisors are to ensure they know the status of all employees they are responsible for. Safety briefings and tailgate sessions will be conducted as often as necessary, several times a shift is recommended
Div A	X	X	X	X			X	X							
Div C	X	X	X	X			X	X		Maintain Situational Awareness at all times, and with everything you do.					
Div E	X		X	X			X	X					X		
Div F	X		X	X			X	X		Law enforcement are not fire fighters, consider safety of our LE support people while in the fire area, especially during evacuations. If it is unsafe for firefighters make sure LE branch is advised.					
BR II															
Div G														X	
Div I															
Div L		X	X	X			X						X		
Div O		X	X	X			X						X		
BR III															
Div P	X	X	X	X			X	X					X	X	
Div R	X	X	X	X			X	X					X	X	
BR IV															
Div T	X	X	X	X			X	X					X	X	
Div Z	X	X	X	X			X	X					X	X	

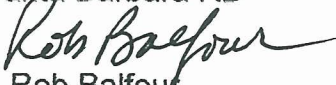
Fire Weather Forecast

FORECAST NO: 3
PREDICTION FOR: 0700 Sat – 0700 Sun

SHIFT DATE: Saturday, May 9, 2009

TIME AND DATE 1847 PDT Friday
FORECAST ISSUED: May 8, 2009

NAME OF FIRE: Jesusita
UNIT: CAL Fire, SBC, STB, MTO,
LPF Santa Barbara RD

SIGNED: 
Rob Balfour
Incident Meteorologist

WEATHER DISCUSSION: ...Red Flag Warning in effect until 1000 PDT Today...
High pressure aloft is weakening. At the surface a low pressure trough will develop well inland during the day. This will cause marine air to push up to the mid slopes. During the night...the low pressure trough will shift offshore and cause the marine air to lower back down to around 1200 feet. A similar weather pattern is expected for Sunday through Tuesday with a more solid and persistent marine layer below 1500 feet.

WEATHER FORECAST: ...Red Flag Warning in effect until 1000 PDT Today...

WEATHER: Sunny/Clear mid and upper slopes, hazy and smoky lower slopes and foothills.

TEMPERATURES:

Branch I...	Highs 75-80°	Lows 60-65°
Branch II...	Highs 68-75°	Lows 52-55°
Branch III...	Highs 75-80°	Lows 60-65°
Branch IV...	Highs 77-80°	Lows 60-65°

HUMIDITY:

Branch I...	Min 25%	Max 55%
Branch II...	Min 35-50%	Max 80-95%
Branch III...	Min 25%	Max 55%
Branch IV...	Min 15%	Max 25%

EYE-LEVEL WINDS:

RIDGETOP - until 1100 PDT – North to Northeast 5-15 mph with gusts 30 mph
1100-2000 PDT – West to Southwest 5 to 10 mph with gusts 15 mph
2000-0700 PDT – Northeast 5 to 10 mph with gusts 20 mph

SLOPE/VALLEY - until 1000 PDT – Northeast 5-10 mph with occasional gusts 30 mph
1000-1800 PDT – upslope/West 3-8 mph occasional gusts 15 mph
1800-2300 PDT – downslope 2-5 mph occasional gusts 10 mph
2300-0700 PDT – Northeast 5-10 mph with gusts 20 mph

STABILITY/INVERSION:

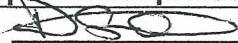
A moderate inversion near 1200 ft MSL will lift to 2700 ft MSL between 1000-1800 PDT with transport winds southwest 7 mph – smoke and haze will be trapped below this inversion. For the upper slopes...mixing level 7000 ft MSL between 1000-1700 PDT with transport winds West 5-10 mph.

OUTLOOK FOR Sunday, May 10, 2009: Hazy/smoky mid and lower slopes with clouds/fog developing overnight. Upper slopes continued Sunny/Clear. Highs 65-80°. Lows 52-65°. Minimum relative humidity 25 percent upper slopes and 35-50% elsewhere. Maximum relative humidity 50% upper slopes and 85-100% elsewhere. Upslope/southeast winds 3-6 mph with gusts 12 mph during the day. Downslope/northeast winds 2-5 mph with gusts 10 mph.

EXTENDED FORECAST:

.Monday through Tuesday...Cool and moist with night and morning clouds/fog lower/mid slopes. Highs 62-77°. Lows 52-65°. Normal upslope/downslope winds with gusts 15 mph. Minimum humidity 40-50 percent. Maximum humidity 80-100 percent.

FIRE BEHAVIOR FORECAST

FORECAST NUMBER: 3	TYPE OF FIRE: Wildland
FIRE NAME: Jesusita	OPERATIONAL PERIOD: May 9, 2009 @ 0700 hours
DATE ISSUED: May 08, 2009 at 1800 hours	24 hour operational period
UNIT: LPF Santa Barbara District	SIGNED:  Drew Smith FBAN / LAC

INPUTS

WEATHER SUMMARY: ...Red Flag Warning is in effect Today Until 1000 hours...
Daytime = Sunny with slight haze and smoke Temp: Around 80 degrees.
RH around 35% lower slopes and 15% upper slopes: Eye Level Winds = Northeast in the morning 5-10 with gusts to 30 mph. TRANSITIONING to the Southwest by early afternoon 3-8mph with 15 mph are possible.
Transitioning winds to up canyon today!!
Nighttime = Hazy skies with temps around 55 degrees and RH around 80% in the lower elevations and Around 50%. Winds = Downslope down valley 2-5 with gust possibly to 10mph

OUTPUTS

FIRE BEHAVIOR

GENERAL: The fire will become topography dominated today. The fire edge that is within 1/2 mile of the Camino Cielo may make it there by the end of the operational period. Upslope runs are 20- 80 ch/hr (1/4 to 1 mph) and generally stopping at the ridge tops. The backing fire will continue to back re align and run with high intensity to the ridgelines.

Expect conditions to change today with the onshore winds.
This fire may have periods of wind dominance with wind speeds over 15 mph.

The fuels are 50 year old mixed chaparral with a heavy dead component and cured annual grasses. Live fuel moistures are 120%. Fine fuel moistures are 5% with a 70-80% probability of ignition. 10 hour dead fuel moistures = 7 and 100 hour dead fuels are 13%.

SPECIFIC:

Branch I: Backing and flanking fire in the steep drainages that will re align to headfire, resulting in up topography dominated fire runs. The Onshore Southerly winds early afternoon will give the fire the ability progress in and along Cold Springs Cyn. pushing to the North to Montecito Peak and Cold Springs Saddle.

Branch II: No fire growth anticipated. However there is the potential for islands to burn out. Flare ups a may materialize with fire spread toward the interior.

Branch III With the change in the wind direction the fire has the ability to move off of HWY 154 to the North. There are significant fingers. The potential if for the fire to move to the North in the San Antonio Drainage to the ridgelines. Due to the southerly wind component.

Branch IV: The fire has the ability to move toward the Painted Cave Rd. extending thru the bowl toward the radio range station. The highest probability for this is between 1100 and 1600 hrs with the Southerly wind alignment.

AIR OPERATIONS: Haze and smoke may hinder visibility some. Power lines exist in the area.

SAFETY

- Maintain situational awareness in this day of transition in the weather. *OnShore Winds*
- Be clear that the fire is topography driven and identify the fires ability to run with headfire.
- Identify that the fire has become wind dominated in exposed fuels with wids over 15 mph.

26

INCIDENT RADIO COMMUNICATIONS PLAN			Incident Name Jesusifa		Date/Time Prepared 5/8 1900		Operational Period Date/Time May 9 0700 to 0700				
Ch #	Function	Channel Name/Trunked Radio System Talkgroup	Assignment	RX Freq	N or W	RX Tone/NAC	TX Freq	N or W	Tx Tone/NAC	Mode A, D or M	Remarks
1	Command	NIFC CMD 2	Command	168.1000	N		170.4500	N	123.0	A	Valley Floor to Ridge top
2	Command	NIFC CMD 9	Command	170.0125	N		165.2500	N	123.0	A	Ridge top and North of
3	Tactical	NIFC TAC 1	DIV A	168.0500	N		168.0500	N		A	Branch 1
4	Tactical	NIFC TAC 3	DIV C	168.6000	N		168.6000	N		A	Branch 1
5	Tactical	WHITE 3	DIV E	154.295	W		154.295	W		A	Branch 1
6	Tactical	WHITE 2	DIV T	154.265	W		154.265	W		A	Branch 4
7	Tactical	NIFC TAC 2	DIV G & I	168.2000	N		168.2000	N		A	Branch 2
8	Tactical	NIFC TAC 4	DIV L	164.1375	N		164.1375	N		A	Branch 2
9	Tactical	NIFC TAC 5	DIV O	166.7250	N		166.7250	N		A	Branch 2
10	Tactical	NIFC TAC 6	DIV P & R	166.7750	N		166.7750	N		A	Branch 3
11	Tactical	NIFC TAC 7	DIV Z	168.2500	N		168.2500	N		A	Branch 4
12	CalCord	EMS Aircraft	All Divisions	156.075	W		156.075	W		A	Ground to EMS Aircraft
13	Air/Ground	BLM Air/Ground	Air/Ground	167.9500	N		167.9500	N		A	Air to Ground
14	Air Guard	Air Guard	Emergency	168.6250	N		168.6250	N	110.9	A	Air/Ground Emergency
15	Air/Ground	BLM Air/Ground	Air/Ground	167.9500	N		167.9500	N		A	Air to Ground
16	Air Guard	Air Guard	Emergency	168.6250	N		168.6250	N	110.9	A	Air/Ground Emergency
Prepared by (Communications Unit) Alan K Knopp											
Incident Location Santa Barbara County W State CA Latitude 34 27.933 N Longitude 119 42.827											

The convention calls for frequency lists to show four digits after the decimal place, followed by either an "N" or a "W", depending on whether the frequency is narrow or wide band. Mode refers to either "A" or "D" indicating analog or digital (e.g. Project 25) or "M" indicating mixed mode. All channels are shown

MEDICAL PLAN	1. Incident Name	2. Date Prepared	3. Time Prepared	4. Operational Period							
	Jesusita	05/08/09	1700	5/9-5/10 0700-0700							
5. Incident Medical Aid Station											
Medical Aid Stations	Location			Paramedics Yes No							
Medical Unit (MERT)	Live Oak Camp			X							
Medical Unit	Earl Warren Base Camp					X					
6. Transportation											
A. Ambulance Services											
Name	Address		Phone		Paramedics Yes No						
AMR	Santa Barbara -				X						
CAL/STAR Air Ambulance	Santa Maria		(805) 546-1915		X						
Santa Barbara County	Santa Ynez				X						
B. Incident Ambulances											
Name	Location			Paramedics Yes No							
AMR 2 (ALS)	Earl Warren Base Camp			X							
7. Hospitals											
Name	Address		Travel Time Air Ground		Phone		Helipad Yes No		Burn Center Yes No		
S.B. cottage Hosp.	Pueblo @ Bath		X		(805) 569-7210		X		X		
Sherman Oaks Burn Center	4929 Van Nuys Blvd. Sherman Oaks CA 91403		40 min. 90 min.		(818)981-7111 Ext. 4580		X		X		
8. Medical Emergency Procedures											
<ol style="list-style-type: none"> 1. Provide immediate care, treatment and notify supervisor. 2. Supervisor notify Branch and/or Ops with injury type (s), lat and long and physical location. 3. Branch/Ops notify Jesusita communications and request appropriate medical transport. 4. Communications notify Santa Barbara Dispatch for dispatching/transportation request. Notify Jesusita Safety Officer and Medical Unit. 5. Monitor and use CALCORD for contact with Air Ambulance. 6. Advise Santa Barbara Dispatch and Jesusita Communications of patient destination. 											
Prepared by (Medical Unit Leader)						10. Reviewed by (Safety Officer)					
<i>[Signature]</i> MEDL						DAVE STONUM					

Jesusita Phone List

Ordering -	805-563-8314 Fax 805-563-0385
CAL FIRE / Equipment Time -	Fax 805-563-2548 805-563-2419
CAL FIRE / Accommodations -	Fax 805-563-2153 805-563-5790
CAL FIRE Comps / Claims -	Fax 805-687-4385 805-563-5731
CAL FIRE Finance -	Fax 805-563-0369 805-563-0274
Plans -	805-563-2409
Information-	Fax 805-563-0843 805-563-0841
Hired Equip -	707-479-5371
Resource Unit -	805-563-0928 805-563-0831
Fire Behavior Analyst	707-391-5570
Los Padres Resource Advisor -	805-878-4057 805-563-0843
Copy Trailer -	Fax 805-563-0814 805-563-0809
Comm Unit	Line -1 805-563-0694 Line -2 805-563-0782 Line -3 805-563-0802
Federal Time Unit -	805-563-5403 805-563-5709
Los Padres Expanded -	805-938-9142 Ext. 232
Medical	925-588-6739
Ground Support -	925-324-9188

TRAINING SPECIALIST MESSAGE

A Training Specialist is on this incident.

All trainees working on position task books need to register with the Training Specialist in order to receive proper credit for your assignment.

INCIDENT TRAINEE DATA FORM

(Fill in ALL AREAS, and PLEASE PRINT!)

Trainee Data

Title/Rank Capt, ENGB, B/C, FAE, Engineer, Etc.		Trainees Name: (First Last)			
Agency/Department Training Officer: (Rank First Last):			Trainee Position on this event:		<input type="checkbox"/> Female <input type="checkbox"/> Male
Agency/Department Name:			Date Assigned:		
Agency/Department Address: (Street Number and Name)					
Agency/Department Address: (City, State and Zip Code)			O, E, or C Number		
State	Three Letter Designator	Agency/Department Phone Number: ()	Crew Name: (Hand Crews Only)	Crew Contact Phone # @ Event:	
Functional Area Please Check <input checked="" type="checkbox"/> Command <input type="checkbox"/> Operations <input type="checkbox"/> Plans <input type="checkbox"/> Logistics <input type="checkbox"/> Finance <input type="checkbox"/> Exp Dis. <input type="checkbox"/> Other					
Please Check <input checked="" type="checkbox"/> USFS <input type="checkbox"/> BLM <input type="checkbox"/> BIA <input type="checkbox"/> NPS <input type="checkbox"/> FWS <input type="checkbox"/> STATE <input type="checkbox"/> LOCAL <input type="checkbox"/> OTHER					

Please circle all that apply:

- | | | |
|---|---|---|
| 1. Trainee has valid Red Card or agency certification card (copy provided)? | Y | N |
| 2. Trainee has current position task book issued by home unit? | Y | N |
| 3. Trainee needs incident issued task book with concurrence by home unit | Y | N |

Trainer/Evaluator Data

Name: (Rank First Last)		Position on event:	
Agency/Department Name			
Agency/Department Address: (Street Number, Name)			
Agency/Department Address: (City, State and Zip Code)		O, E, or C Number	
Agency Phone#: ()		Cell or other contact #: ()	
State	Three Letter Designator	Unit/Strike Team # (used at Check-in):	Cell/Contact Number @ event:

Earl Warren Fire Deployment Traffic Plan

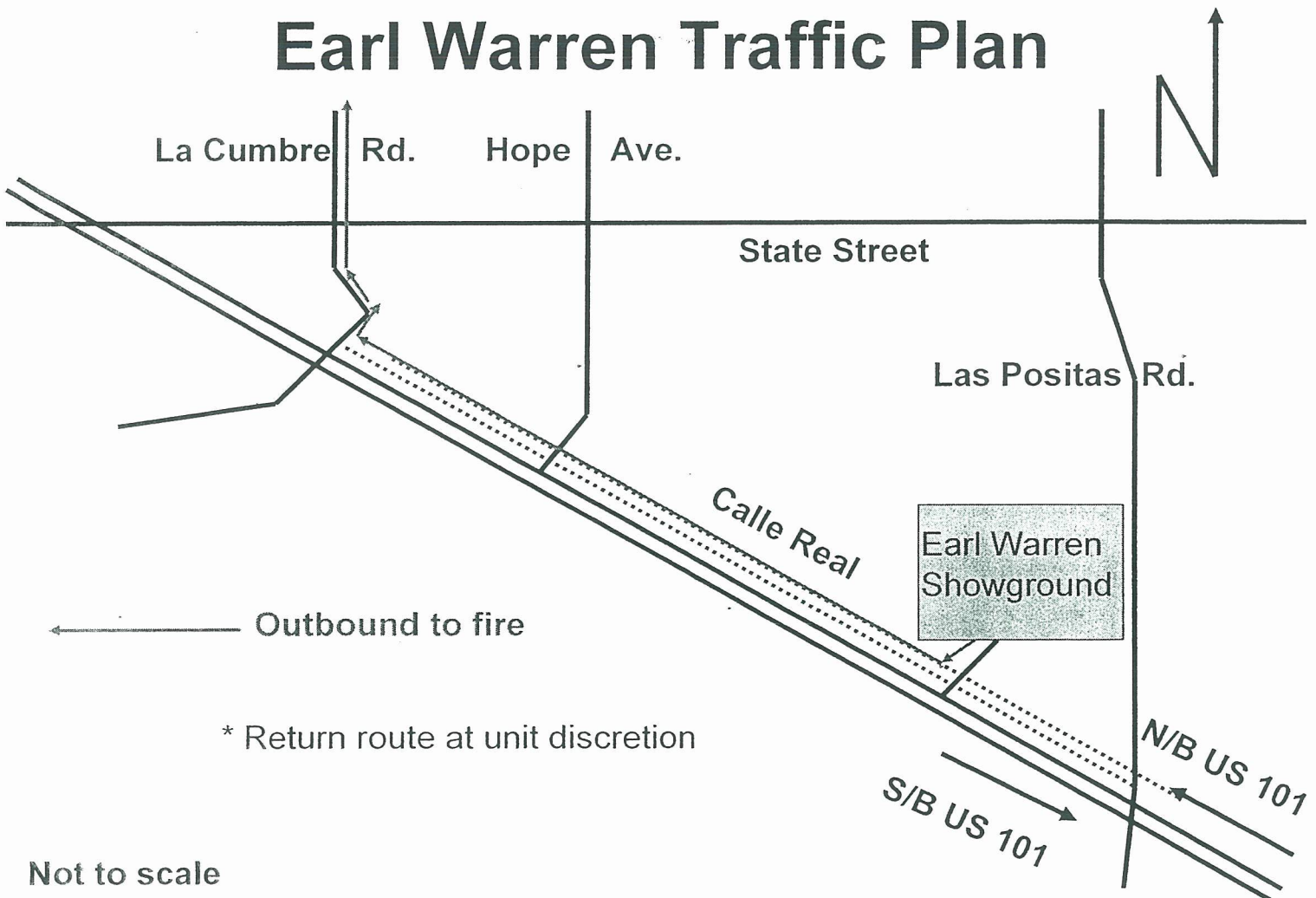
Outbound and return traffic will be directed to one of the two following routes at the parking lot exit.

Outbound Traffic

- Fire equipment will exit parking lot, turn right (west) onto Calle Real, continue past Hope Ave to La Cumbre Road, turn right (north) and continue to Hwy 192/Foothill Road.

Returning traffic route at unit discretion, enter Earl Warren Showgrounds through Calle Real gate.

Earl Warren Traffic Plan



Not to scale

Thomas Bros Map Page 985

ICP FACILITIES MAP

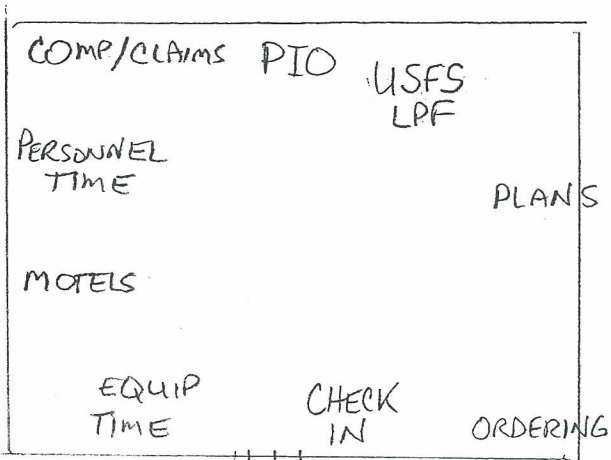


NOT TO SCALE

SHOWERS
LAUNDRY

TENTS

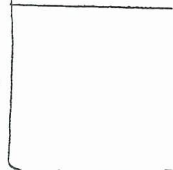
EARL WARREN
SHOWGROUNDS



COMMUNICATIONS
X

CLERICAL
GIS

MEDICAL



TENTS

VERIZON
SHERRIF

AIR SUPPORT

ENGINES
PARKING

OVERHEAD
PARKING

MKH

LUNCHES
ICE

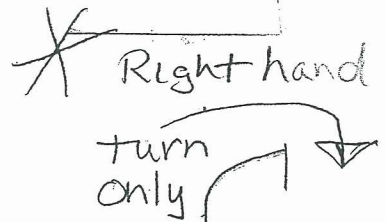
LAS POSITAS

DOZER / TRANSPORT

ENGINES
PARKING

DOZER TRANSPORT

CALLE REAL



FUEL AND
GROUND
SUPPORT

TURN RIGHT ON HITCHCOCK

LIVE OAK CAMP

↑
TO SOLYANG

LIVE OAK

C

RANCHO SAN MARCOS
GOLF COURSE

PARADISE ROAD

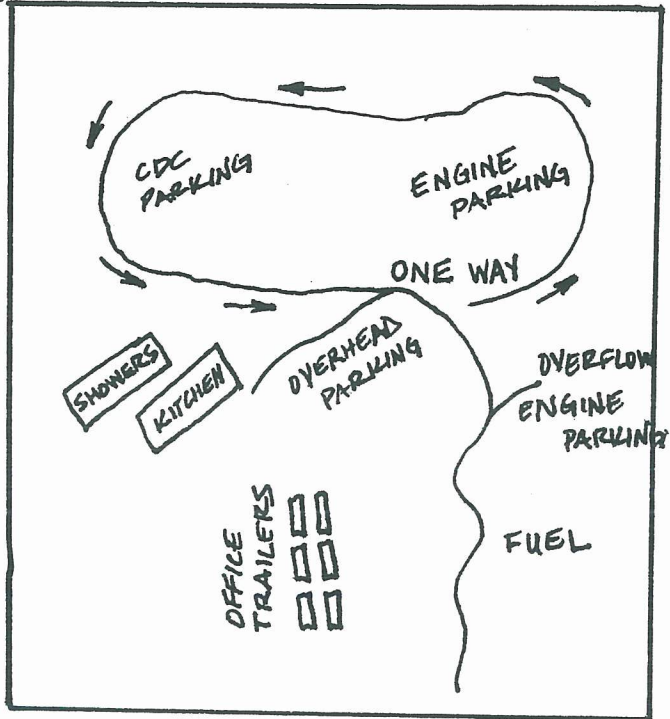
HIGHWAY 154

CAMINO CIELO

HIGHWAY 101

HIGHWAY 101

EARL
WARREN
BASE



NOT TO SCALE



DIVISION / GROUP SUPERVISOR OPERATIONAL PERIOD - DEBRIEFING FORM



Incident Name: _____ Operational Period: _____

Branch: _____ Division/Group: _____ Div/Grp Supervisor Name: _____

Cell #: _____ Vehicle Radio #: _____

Weather: _____

Time: _____ Temp: _____ Humidity: _____ Fire Behav.: _____

Wind: _____ Fuels: _____ Topog: _____ Natural Barriers: _____

Today

General Remarks / Accomplishments / Problem Areas:

Spot Fires: _____

Safety Concerns: _____

Water Sources: _____

Drop Points: _____

Division Breaks: _____

Helispots: _____

Values at Risk: _____

ACCOUNTABILITY

AGENCY Resources Committed to Division / Group

Overhead	ENG	ENG S/T	CRW	CRW S/T	DOZ	DOZ S/T	W/T	Other

ACCOUNTABILITY

PRIVATE Resources Committed to Division / Group

Kind	Req. #	Owner / ID	Operator	2nd Oper?	Type/Size	Remarks

Reminder: Complete Vendor Shift Tickets and Vendor Evaluations

Check if resource list is continued on back.



Planning for Next Operational Period -This is due in prior to the 1600 Mtg

Next Operational Period: _____ thru _____ Division / Group: _____

Division / Group RESOURCES NEEDED for Next Operational Period

Engines (Type/#)		Crews (Type/#)		Dozers	Water Tenders	Tankers	Copters	Other Equipment	Overhead
<i>S/T</i>	<i>SR</i>	<i>S/T</i>	<i>SR</i>	<i>Type/#</i>	<i>Type/#</i>	<i>Type/#</i>	<i>Type/#</i>	<i>Kind/#</i>	<i>Kind/#</i>

**Division / Group Assignments -- Special Needs
Next Operational Period**

Tomorrow

Work Assignments:

Special Needs:

Logistical Needs:

Please Turn in this Form to Planning Section prior to 1600 hour meeting

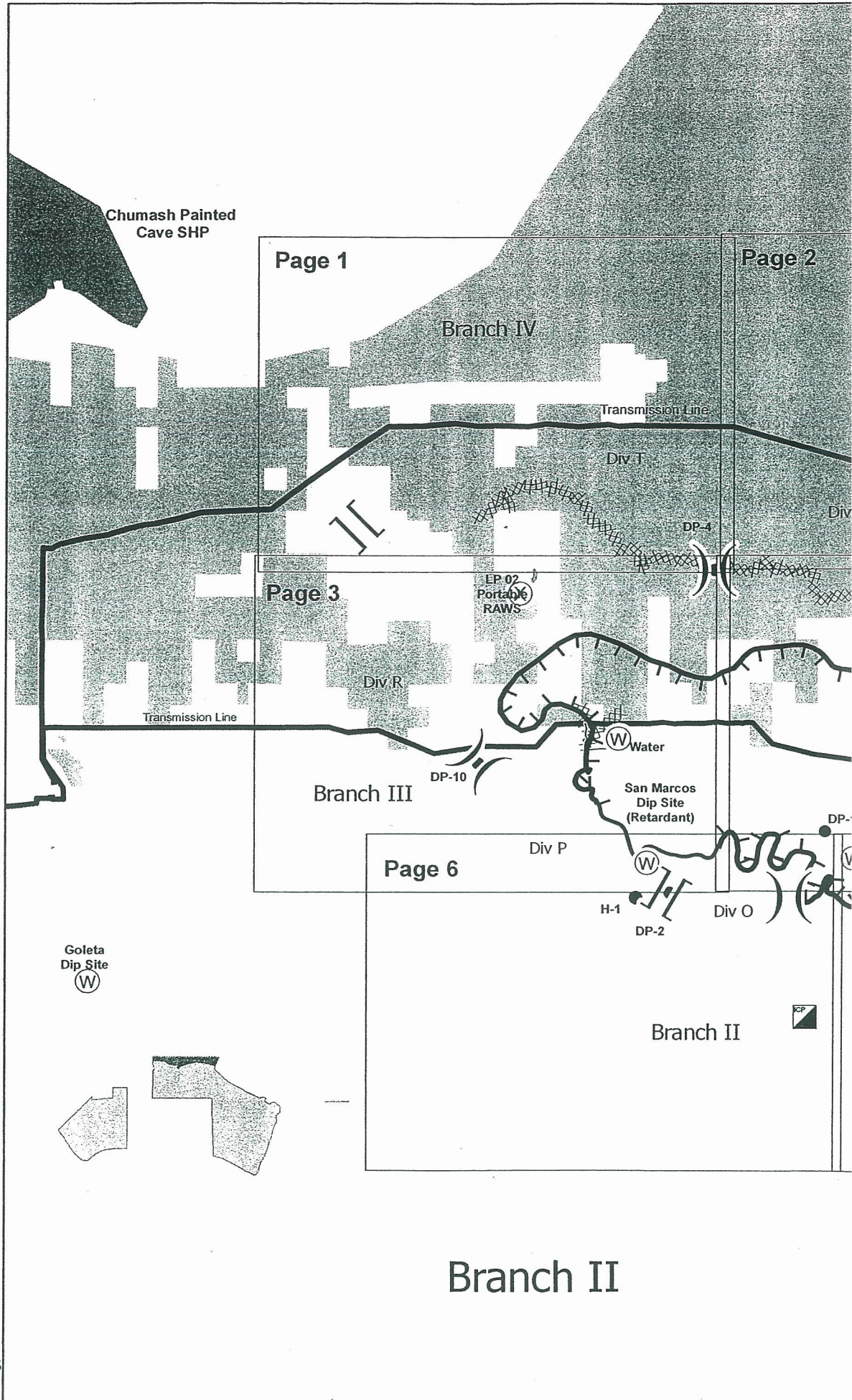
Email:

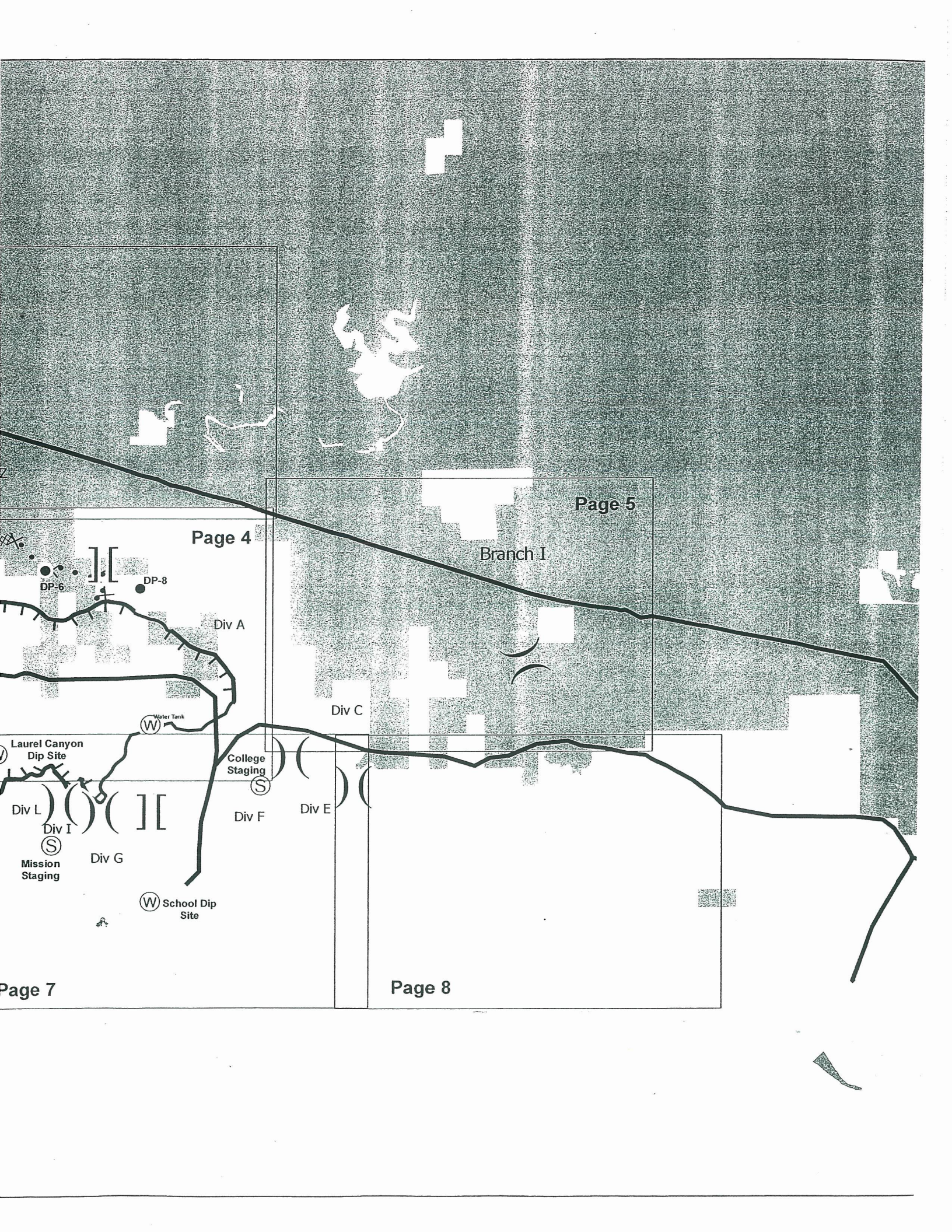
Fax #:

Phone :

Jesusita Fire
LA LPF 001479
May 9, 2009
Index

- Legend**
- () Division
 - [] Branch
 - Drop Point
 - Helispot
 - (S) Staging Area
 - (W) Water Source
 - (H) Helibase
 - ▣ Incident Command Post
 - (R) Repeater
 - (F) Fire Station
 - Completed Line
 - Uncontrolled Fire Edge
 - XXXXX Completed Dozer Line
 - X• Proposed Dozer Line
 - - - Planned Fire Line
 - Planned Secondary Line
 - █ USDA Forest Service





Page 4

Page 5

Branch I

Div A

Div C

Div F

Div E

Div L

Div I

Div G

W School Dip Site

Laurel Canyon Dip Site

College Staging

Mission Staging

W Water Tank

DP-6

DP-8

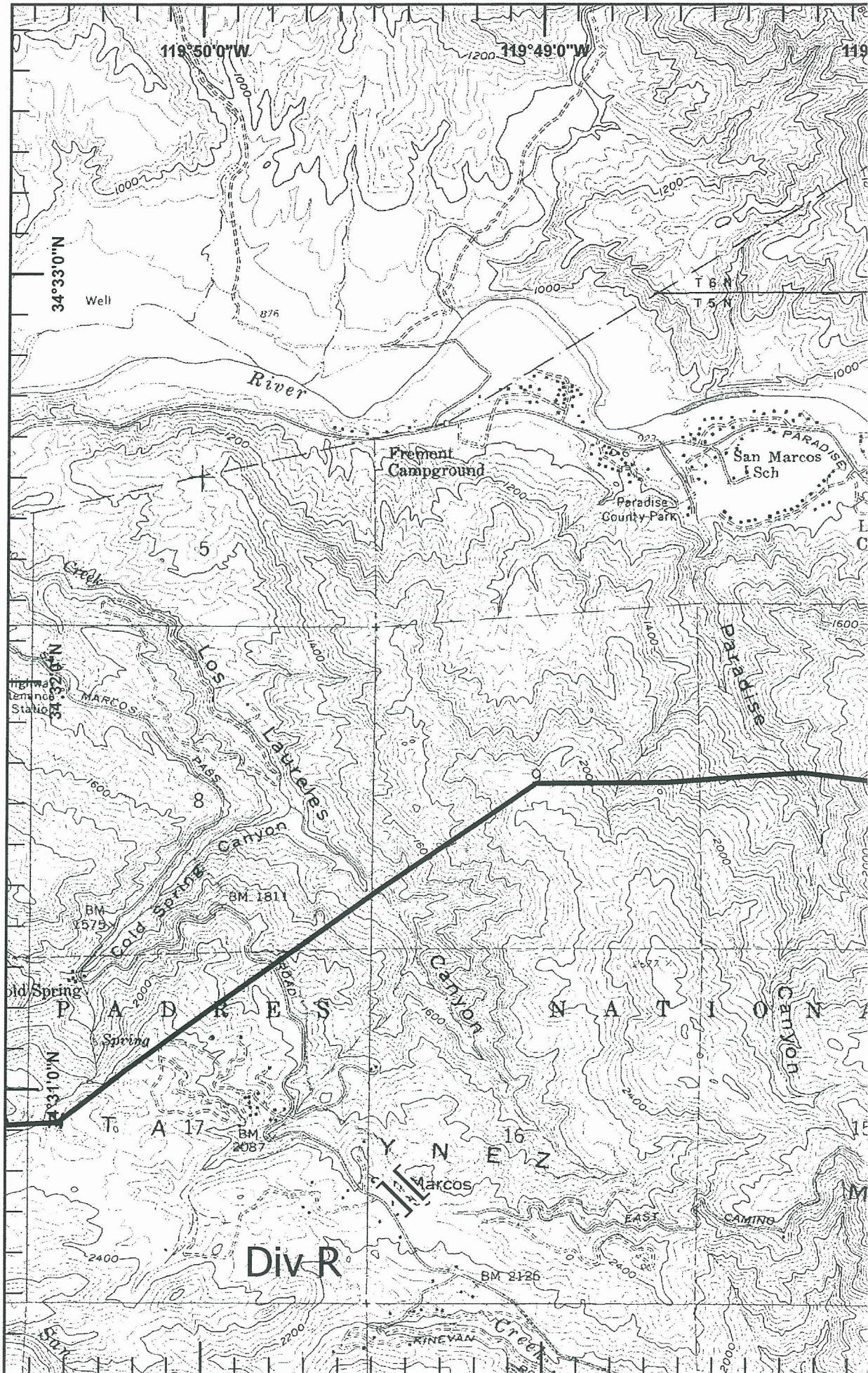
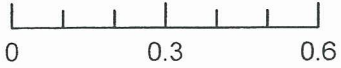
Page 7

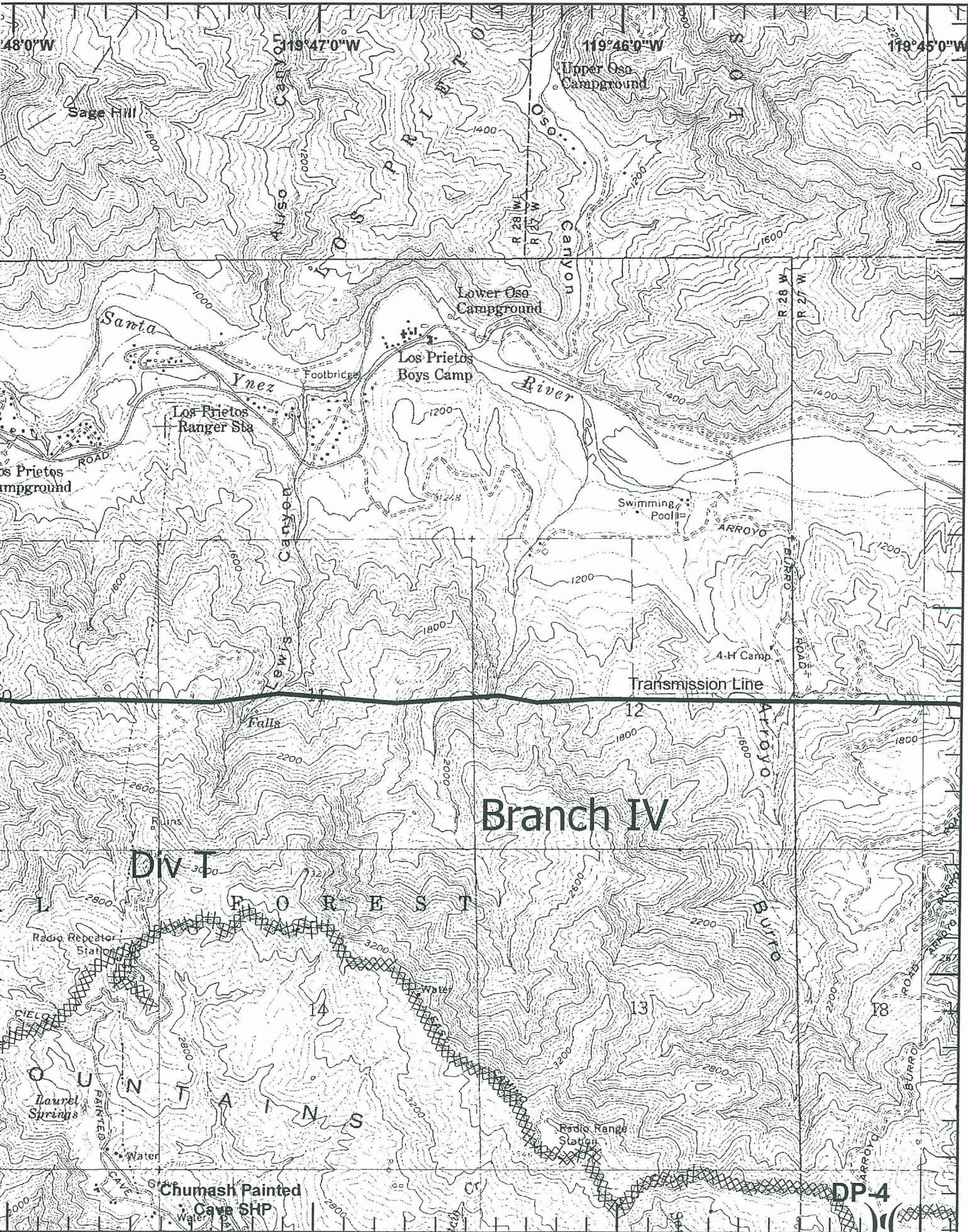
Page 8

- Legend**
- () Division
 - [] Branch
 - Drop Point
 - Helispot
 - ⊙ Staging Area
 - ⊙ Water Source
 - ⊙ Helibase
 - ▣ Incident Command Post
 - Ⓡ Repeater
 - Ⓢ Fire Station
 - Completed Line
 - Uncontrolled Fire Edge
 - ⊗ Completed Dozer Line
 - ⊗ Proposed Dozer Line
 - - - Planned Fire Line
 - ⋯ Planned Secondary Line



Miles





Branch IV

DWP-4
FOREST

DP-4

Chumash Painted
Cave SHP

Laurel Springs

Radio Repeater
Station

Radio Range
Station

Transmission Line

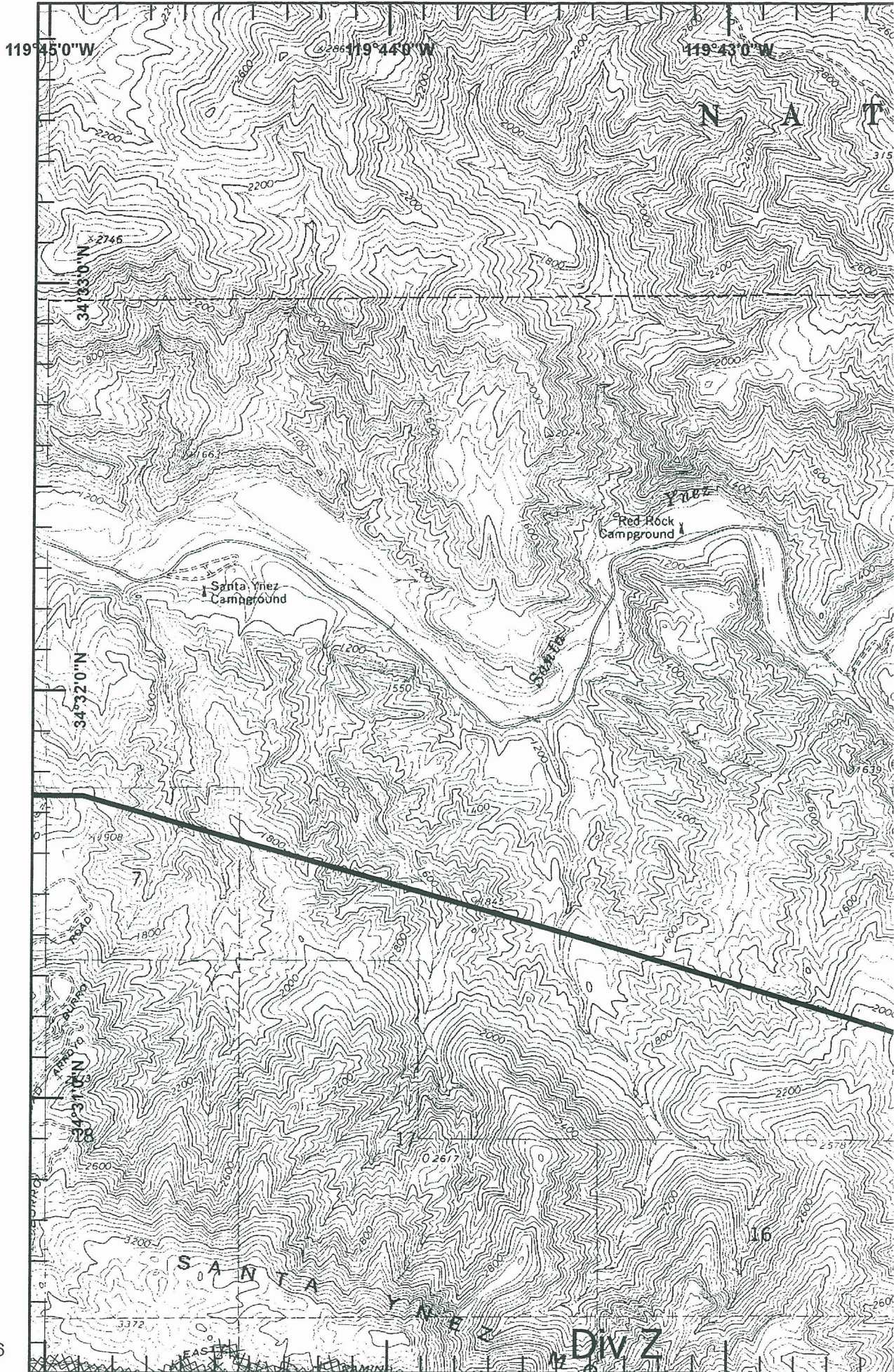
Swimming
Pool

Los Prietos
Boys Camp

Los Prietos
Ranger Sta

Lower Oso
Campground

Upper Oso
Campground

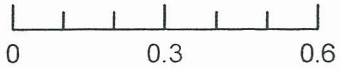


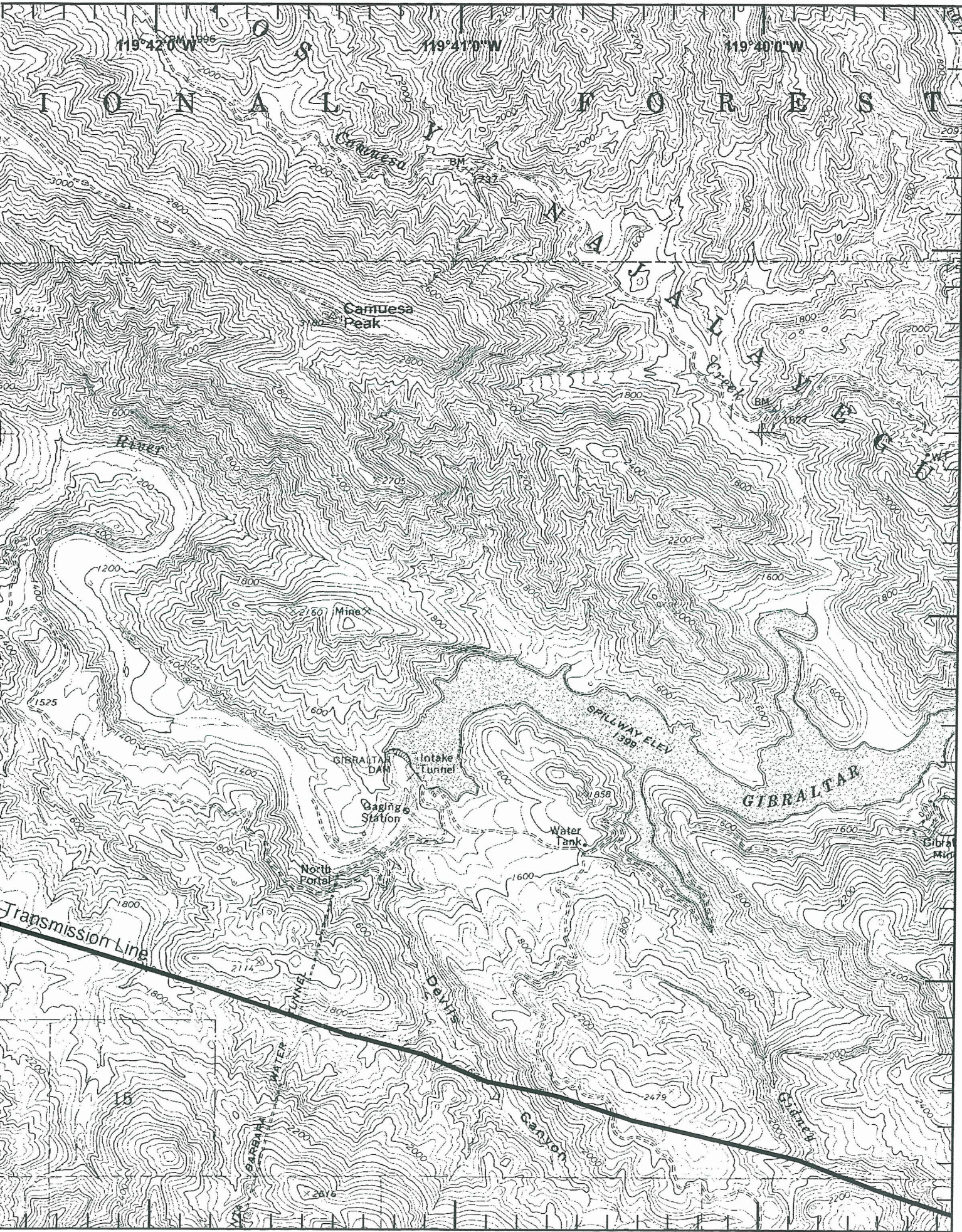
Legend

- () Division
- || Branch
- Drop Point
- Helispot
- ⊙ Staging Area
- ⊙ Water Source
- ⊙ Helibase
- ▣ Incident Command Post
- Ⓡ Repeater
- Ⓢ Fire Station
- Completed Line
- Uncontrolled Fire Edge
- xxxxx Completed Dozer Line
- ⊗ Proposed Dozer Line
- - - Planned Fire Line
- Planned Secondary Line



Miles



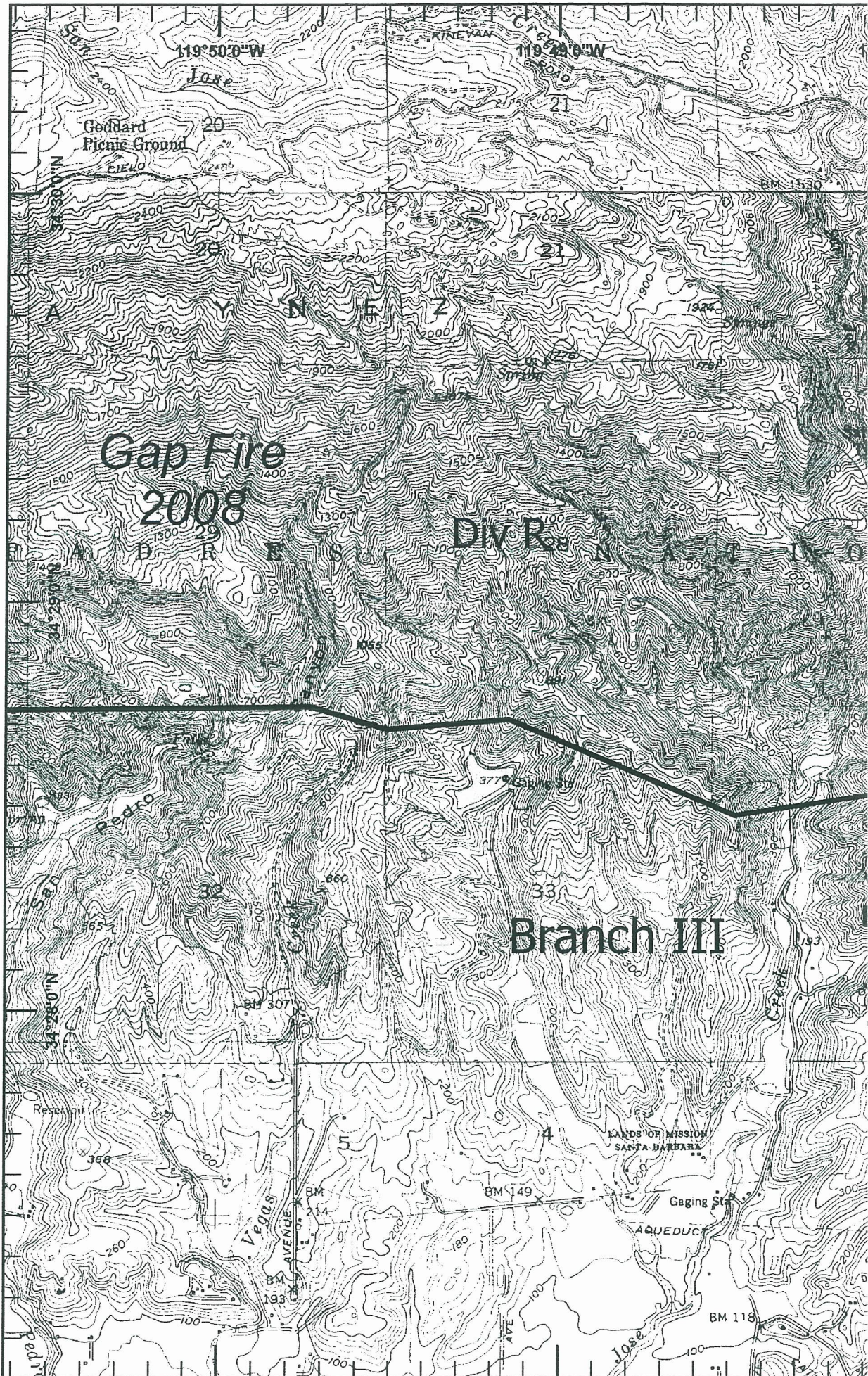
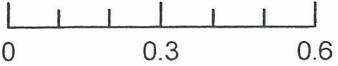


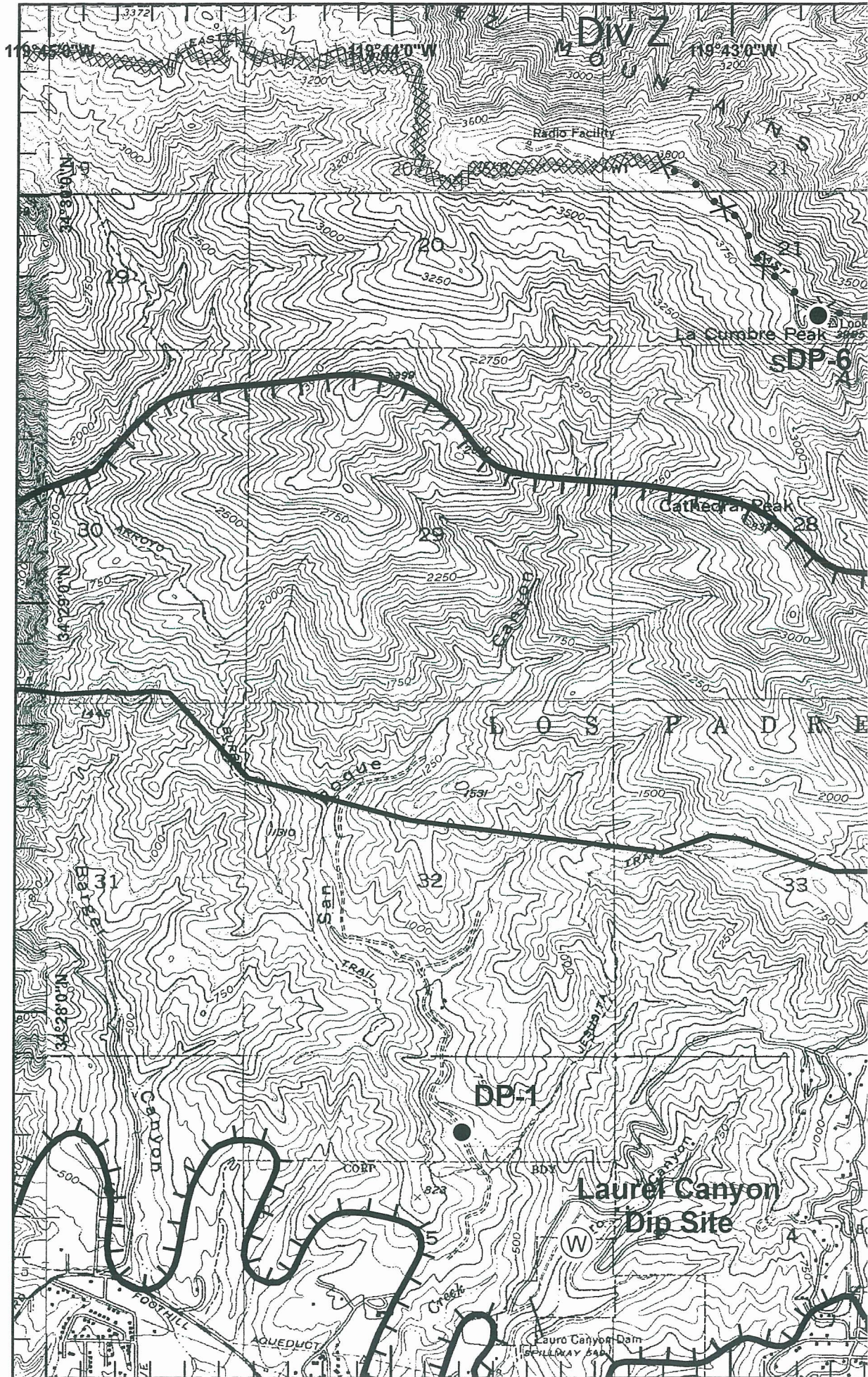
Legend

- () Division
- || Branch
- Drop Point
- Helispot
- ⊙ Staging Area
- ⊙ Water Source
- ⊙ Helibase
- ▣ Incident Command Post
- Ⓡ Repeater
- Ⓢ Fire Station
- Completed Line
- Uncontrolled Fire Edge
- XXXXX Completed Dozer Line
- X • Proposed Dozer Line
- - - Planned Fire Line
- Planned Secondary Line






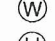












Miles



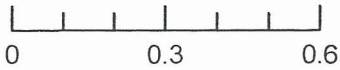


Legend

-  Division
-  Branch
-  Drop Point
-  Helispot
-  Staging Area
-  Water Source
-  Helibase
-  Incident Command Post
-  Repeater
-  Fire Station
-  Completed Line
-  Uncontrolled Fire Edge
-  Completed Dozer Line
-  Proposed Dozer Line
-  Planned Fire Line
-  Planned Secondary Line



Miles

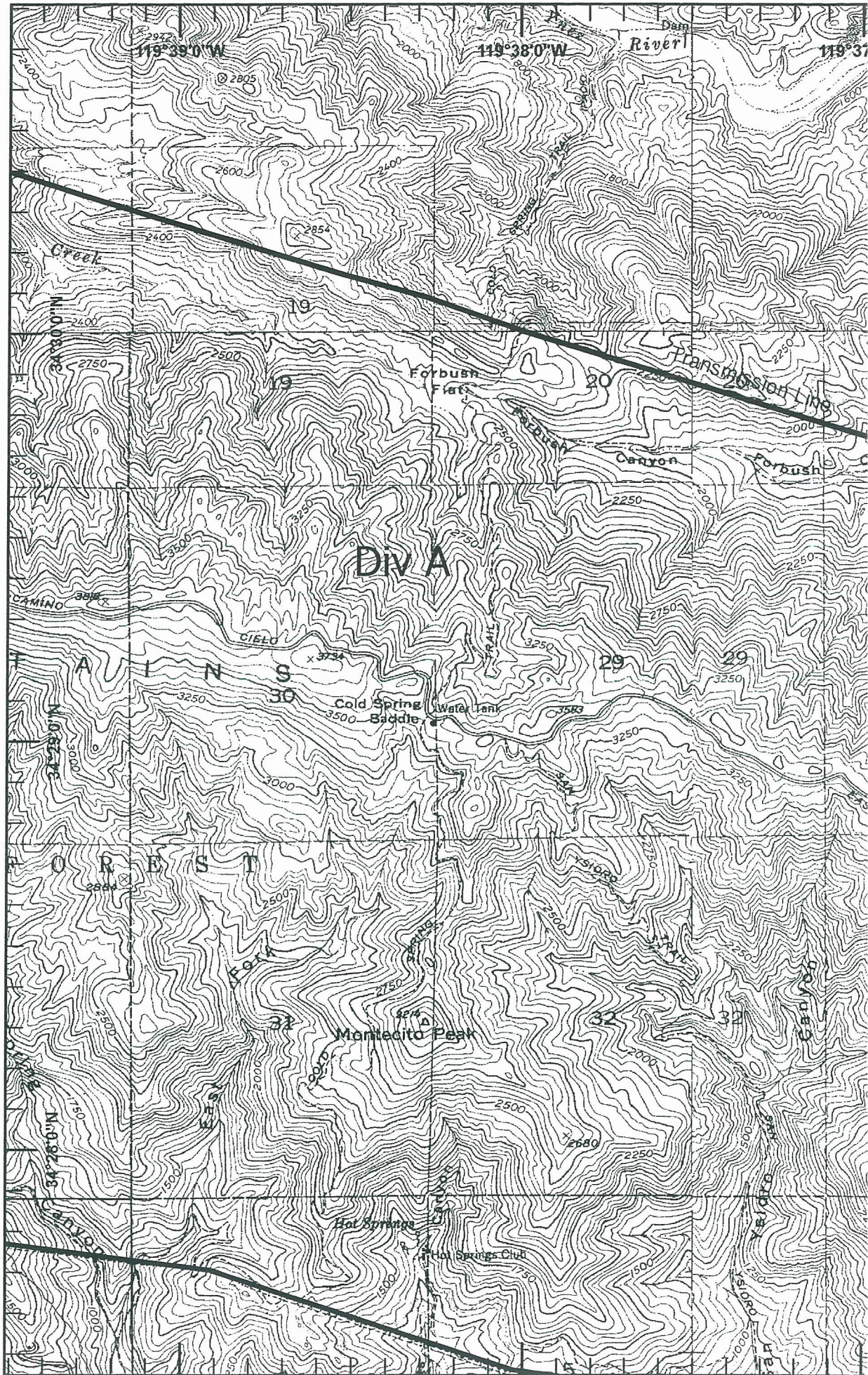
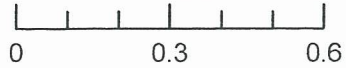


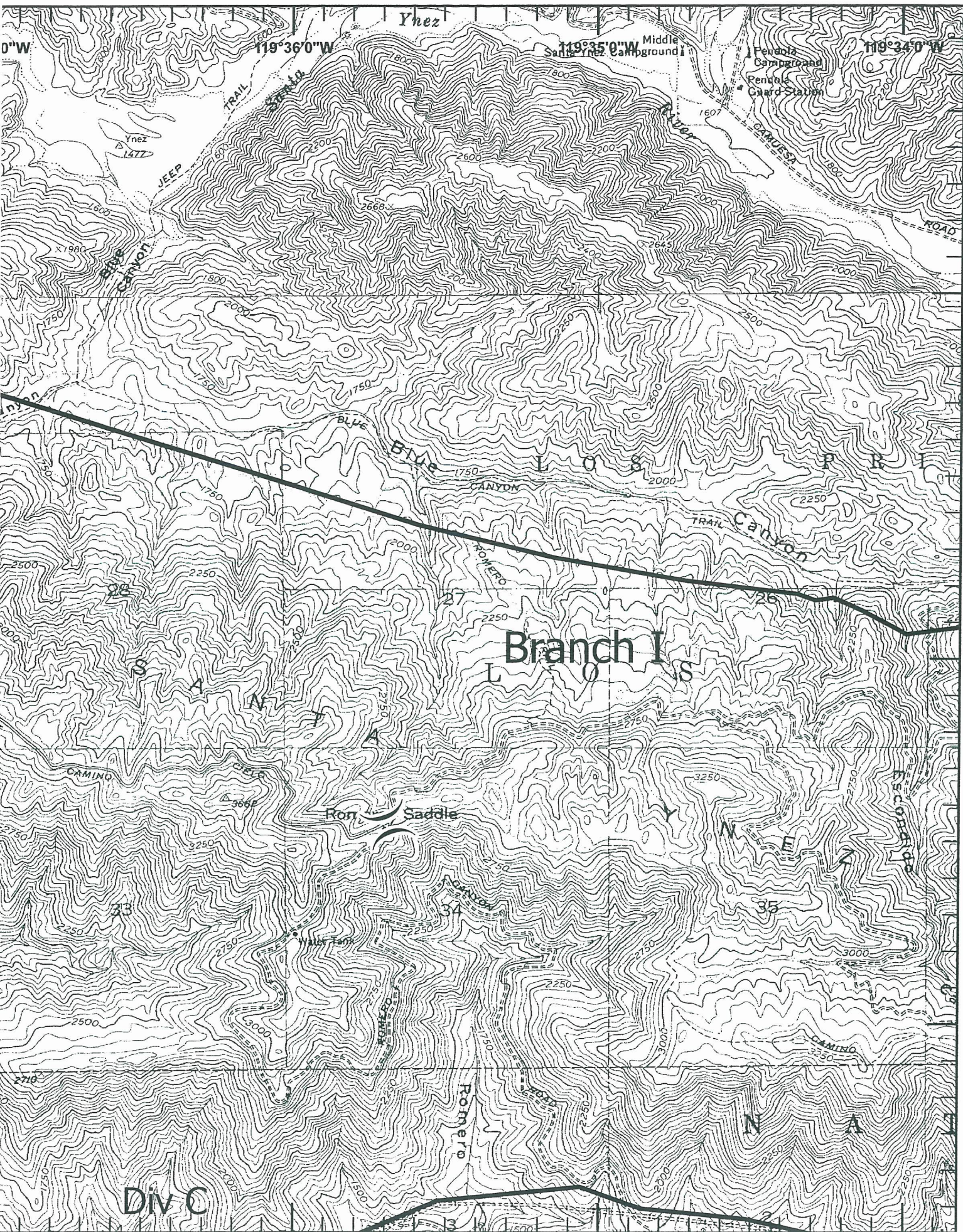
Legend

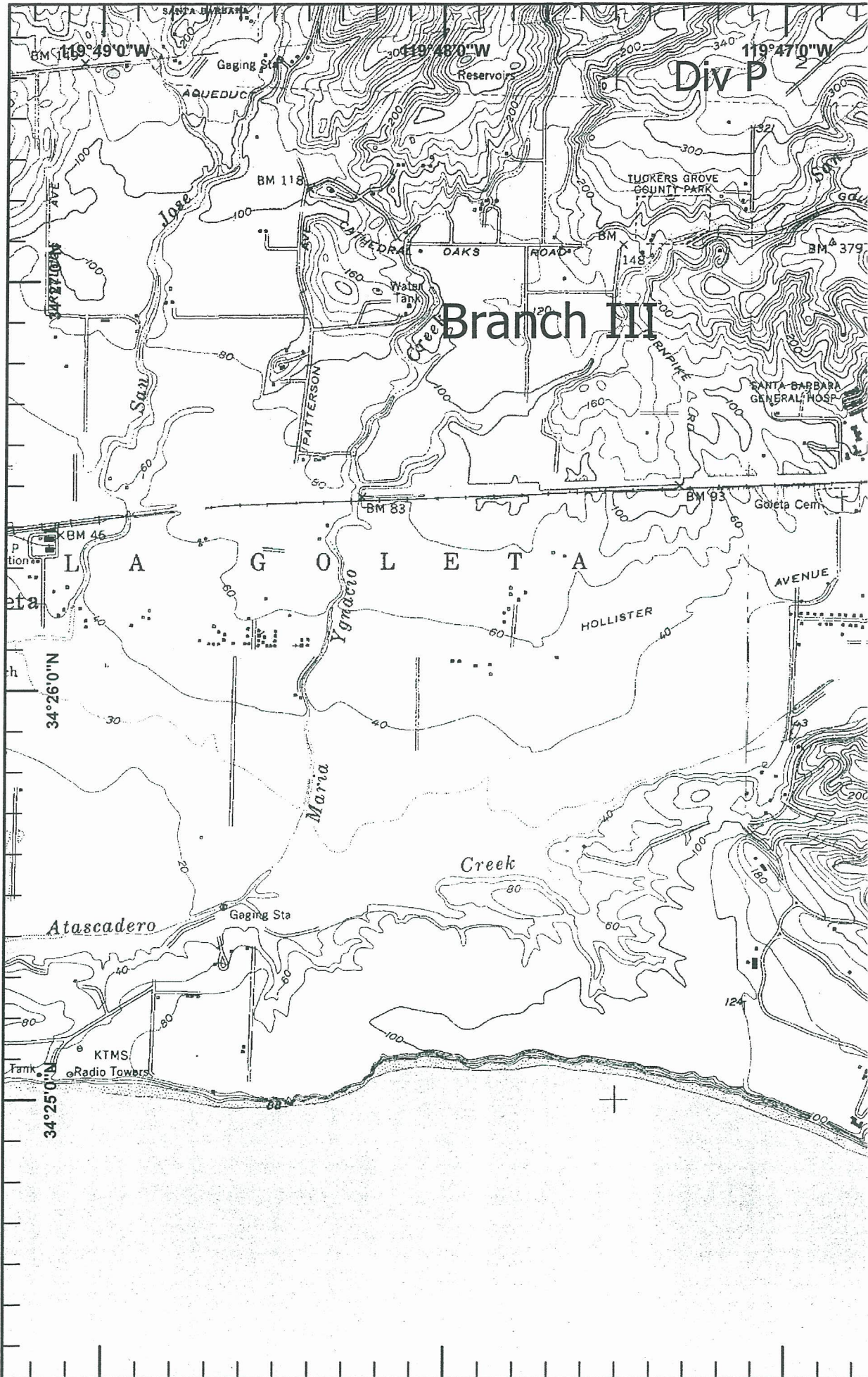
- () Division
- [] Branch
- Drop Point
- Helispot
- ⊙ Staging Area
- ⊙ Water Source
- ⊙ Helibase
- ▣ Incident Command Post
- Ⓜ Repeater
- Ⓧ Fire Station
- Completed Line
- Uncontrolled Fire Edge
- XXXXX Completed Dozer Line
- X • Proposed Dozer Line
- - - Planned Fire Line
- Planned Secondary Line







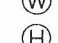











Miles





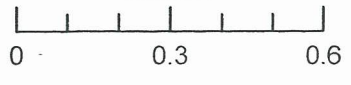


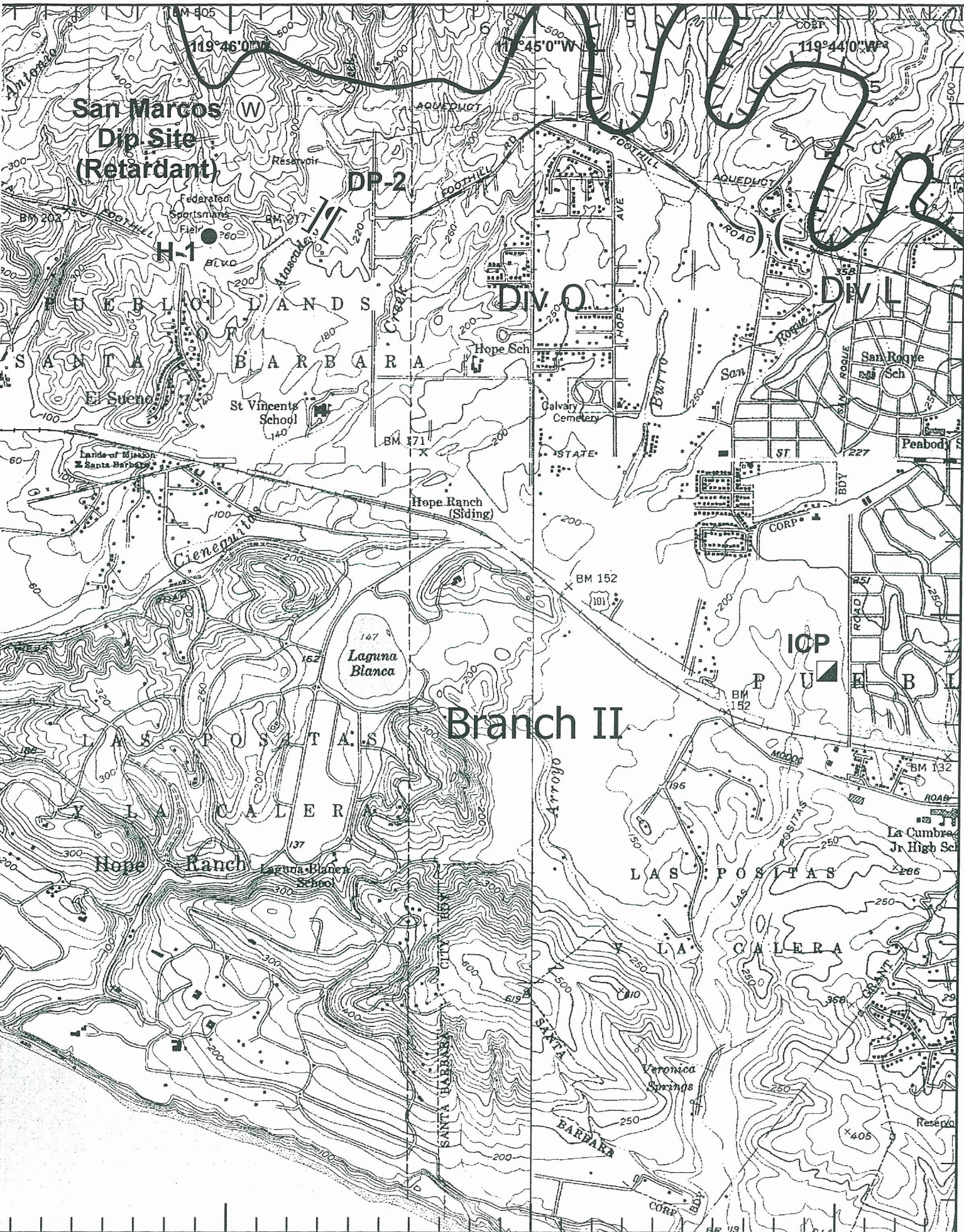
Legend

-  Division
-  Branch
-  Drop Point
-  Helispot
-  Staging Area
-  Water Source
-  Helibase
-  Incident Command Post
-  Repeater
-  Fire Station
-  Completed Line
-  Uncontrolled Fire Edge
-  Completed Dozer Line
-  Proposed Dozer Line
-  Planned Fire Line
-  Planned Secondary Line



Miles





San Marcos
Dip Site
(Retardant)

DP-2

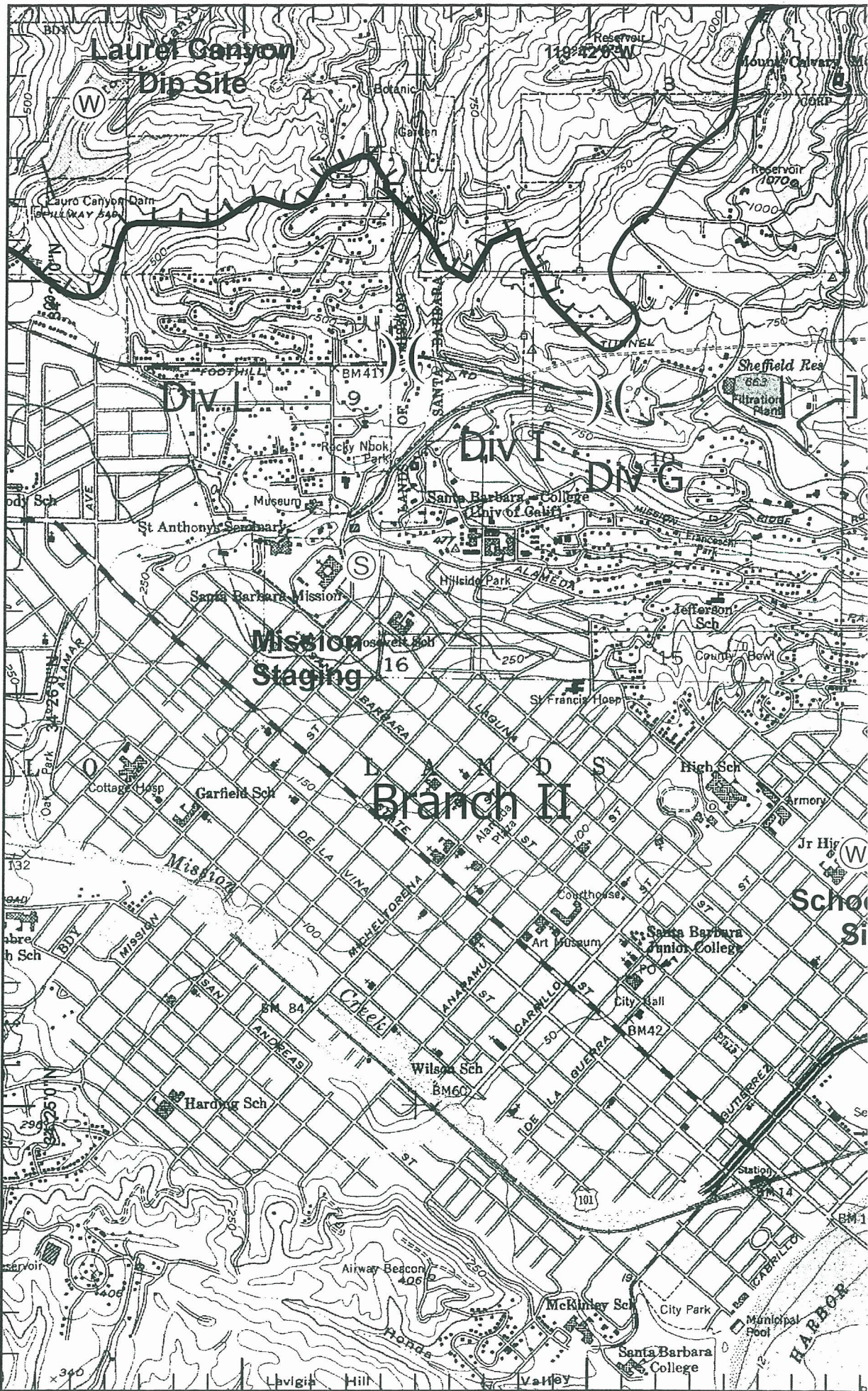
DIV O

DIV L

Branch II

IOP

La Cumbre
Jr High Sch

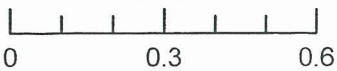


Legend

- () Division
- [] Branch
- Drop Point
- Helispot
- ⊙ Staging Area
- ⊙ Water Source
- ⊙ Helibase
- ▣ Incident Command Post
- Ⓡ Repeater
- Ⓡ Fire Station
- Completed Line
- Uncontrolled Fire Edge
- XXXXX Completed Dozer Line
- X• Proposed Dozer Line
- - - Planned Fire Line
- Planned Secondary Line



Miles





Legend

- () Division
- [] Branch
- Drop Point
- Helispot
- ⊙ Staging Area
- ⊙ Water Source
- ⊙ Helibase
- ▣ Incident Command Post
- Ⓡ Repeater
- Ⓢ Fire Station
- Completed Line
- Uncontrolled Fire Edge
- ⊗ Completed Dozer Line
- ⊗ Proposed Dozer Line
- - - Planned Fire Line
- ⋯ Planned Secondary Line



Miles

