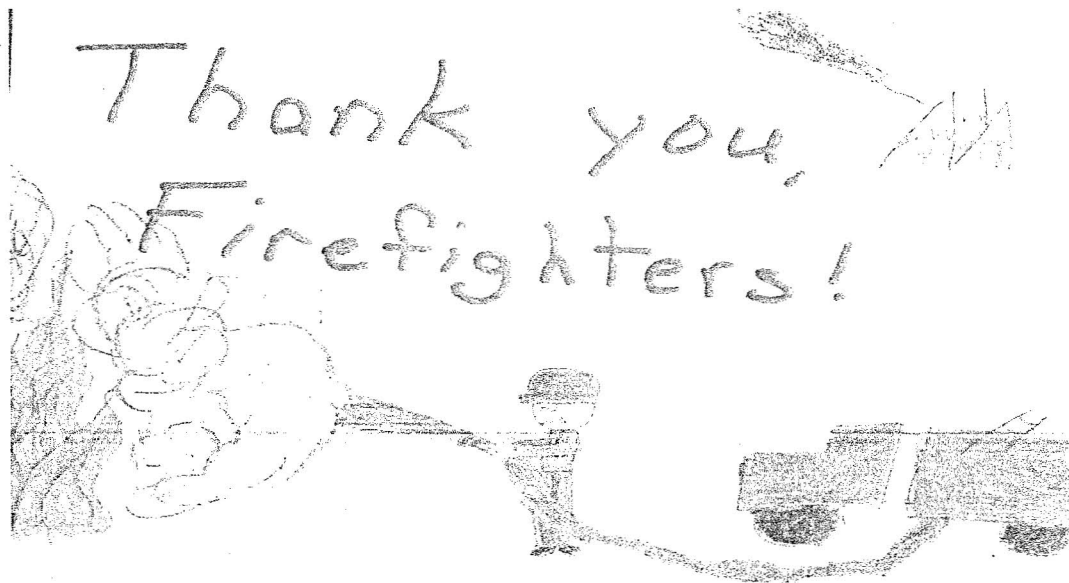


JESUSITA INCIDENT

CALPF 001479



INCIDENT ACTION PLAN

OPERATIONAL PERIOD

May 11 – May 12, 2009

0700-0700



UNIFIED COMMAND

Los Padres National Forest
Santa Barbara County Fire Dept
Santa Barbara City Fire Dept
Montecito Fire Dept
CAL FIRE

INCIDENT OBJECTIVES	1. Incident Name JESUSITA	2. Date May 10, 2009	3. Time 1630
4. Operational Period 0700- 0700 (12 HOUR SHIFT: 0700-1900, 24-HOUR OPERATIONAL PERIOD), May 11 – 12, 2009			
5. General Control Objectives for the Incident (include alternatives) CONTROL OBJECTIVES: Protect infrastructure as need dictates. Minimize acreage burned where possible. Keep fire: East of Gap Fire Footprint West of Franklin Ridge North of State Highway 192 South of Camino Cielo MANAGEMENT OBJECTIVES: <ul style="list-style-type: none"> • Safety of incident personnel and the public is the #1 priority. • Maintain positive relations with the public, cooperators, and elected officials. • Provide for orderly repopulation of evacuated areas when it can be safely achieved. • Ensure accurate and timely release of information. • Protect property, improvements and critical infrastructure. • Keep costs commensurate with values at risk. 			
6. Weather Forecast for Period Cloudy/Fog through most of the day then clearing late afternoon and evening. Clear overnight. Highs 68 to 84. Lows 52 to 59. Min Humidity 15-30 percent... occurring during the evening hours in Branches I, II, & III. Max Humidity 40 percent in Branch IV, otherwise 80-100 percent morning hours in Branches I, II, & III. Slope/Valley winds upslope/southeast 3-8 mph becoming North to Northwest 12 mph with gusts 35 mph during the evening hours. Ridge winds north 7 to 15 mph increasing during the evening to 17 mph with gusts 25 to 40 mph with stronger gusts early Tuesday morning.			
7. General Safety Message Don't get complacent; watch out for hazards. Hwy 154 has been opened to the public, vehicles need to slow down and be alert. Drink Water - Stay hydrated. Follow the traffic plans, slow down, drive defensively. After Demobilization - While traveling home make frequent rest stops.			
8. Attachments (mark if attached)			
<input checked="" type="checkbox"/> Organization List - ICS 203 <input checked="" type="checkbox"/> Unit Log (ICS-214) <input checked="" type="checkbox"/> Div. Assignment Lists - ICS 204 <input checked="" type="checkbox"/> Travel Map <input checked="" type="checkbox"/> Communications Plan - ICS 205 <input checked="" type="checkbox"/> Incident Map <input checked="" type="checkbox"/> Medical Plan - ICS 206 <input checked="" type="checkbox"/> Facilities Map <input checked="" type="checkbox"/> Division Accountability <input checked="" type="checkbox"/> Phone List			
9. Prepared by (Planning Section Chief) Pam Linstedt, PSC <i>Pam Linstedt</i>		10. Approved by (Incident Commander) Joe Waterman, IC <i>Joe Waterman</i>	

ORGANIZATION ASSIGNMENT LIST ICS 203			1. INCIDENT NAME	2. DATE PREPARED	3. TIME PREPARED
			Jesusita	5/10/2009	1800
5. INCIDENT COMMANDER AND STAFF			4. OPERATIONAL PERIOD (DATE/TIME)		
			05/11/09 – 05/12/09 0700-0700		
POSITION		NAME	9. OPERATIONS SECTION		
INCIDENT COMMANDER	Joe Waterman	Cal Fire Team 4	CHIEF - day	Jeff Brand / Ed Locke	
INCIDENT COMMANDER	Dana D'Andrea	LPF	CHIEF - night	Mark Kendall / Rich Boehm (T)	
INCIDENT COMMANDER	Mark Schmitt	SBC	Planning/OPS	Rich Lopez	
INCIDENT COMMANDER	Pat McElroy	STB			
INCIDENT COMMANDER	Kevin Wallace	MTO	a. BRANCH I - DIVISIONS/GROUPS		
DEPUTY	Kelley Gouette		BRANCH DIRECTOR	C. Childers (Day)/F. Royos (Night)	
SAFETY OFFICER	Dave Stonum / Eric Ohde		DIVISION/GROUP	A	William Schaal
INFORMATION OFFICER	Mike Carr / Dennis Mathisen		DIVISION/GROUP	C	Frank Chacon / Brandon Paige
LIAISON OFFICER	Steve Gasaway		DIVISION/GROUP	E	Steven Stoll
6. AGENCY REPRESENTATIVES			DIVISION/GROUP	F	Kurt Ohlau
AGENCY	NAME		DIVISION/GROUP	Romero Dozer Robert Neumann	
OES	Ishmael Messer		b. BRANCH II - DIVISIONS/GROUPS		
Ventura	Mark Lorenzen		BRANCH DIRECTOR	B. Rodello (Day)/K. French (Night)	
CDCR	Dave Faulkner		DIVISION/GROUP	G/I	Matthew Farris / Joseph Tieso (T)
Santa Barbara City	Lee Waldron		DIVISION/GROUP	L	Craig Kinoshita
Los Angeles FD	Terrance Manning		DIVISION/GROUP	O	Tom Lubas
U.S.F.S.	John Bridgwater		DIVISION/GROUP		
L.A. County	Don De Young		DIVISION/GROUP		
CCC	Jim Kastner		c. BRANCH III - DIVISIONS/GROUPS		
Goleta Water	Shawn Dollar		BRANCH DIRECTOR	Enos/Navarro(T) (Day)/ Kaslin (Night)	
7. PLANNING SECTION			DIVISION/GROUP	P	Ryan/ Carlisle / Steidley (T)
CHIEF	Pam Linstedt		DIVISION/GROUP	R	Roland Garcia / Mike Smith (T)
DEPUTY	Jim Ferguson / Bruce Schofield		DIVISION/GROUP		
RESOURCES UNIT DAY	Ralph Gladwin (T)		d. BRANCH IV - DIVISIONS/GROUPS		
RESOURCES UNIT NIGHT	Tony Giacomini (T)		BRANCH DIRECTOR	VonTillo/Davis (Day)/ Bailey (Night)	
SITUATION UNIT	Phyllis Banducci / Denny O'Neil		DIVISION/GROUP	T/Z	Steve Burns
DOCUMENTATION UNIT	Terry Berger		DIVISION/GROUP		
DEMOBILIZATION UNIT	Brook Darley		e. CONTINGENCY GROUP		
TECHNICAL SPECIALISTS			DIVISION/GROUP		Abdul Ahmad
	IMET	Rob Balfour	f. Fire Line Suppression Repair		
	Training	Michael Murphy	DIVISION/GROUP		Mary Huggins / David Shy
	GIS	Elsa Hucks / Albert Lau			
	FBAN	Bill Baxter / Drew Smith			
	Fire Line Repair	Mary Huggins	g. AIR OPERATIONS BRANCH		
	Archaeologist	Steve Galbraith	AIR OPERATIONS BR. DIR.	Chris Avina / Scott Packwood (T)	
	Resource Advisor	Kyle Kinsport	AIR ATTACK SUPERVISOR	Bennett / Innes	
8. LOGISTICS SECTION			AIR SUPPORT SUPERVISOR	Mark Gradek	
CHIEF	Dawn Pederson Breanna Buchanan (T), Ken Lowe (T)		10. FINANCE/ADMINISTRATION SECTION		
SUPPLY UNIT	Jim Vierra		CHIEF	Deanna Lyman	
FACILITIES UNIT	Wendye Stuller		TIME UNIT	Leslie Marg	
GROUND SUPPORT UNIT	Steve Langston		PROCUREMENT UNIT	Mike Abarca	
COMMUNICATIONS	Alan Knopp		COMPENSATION/CLAIMS	Teri Accurso	
MEDICAL UNIT	Larry Wondercheck		COST UNIT	Michael Borelli	
FOOD UNIT	Blair Gillespie		FEDERAL TIME UNIT	Judy Reynolds	
ICS 203			PREPARED BY (RESOURCES UNIT) Tony Giacomini		

DIVISION ASSIGNMENT LIST				1. Branch I		2. Division/Group DIV A		
3. Incident Name Jesusita				4. Operational Period Date: 5/11/09 – 5/12/09 Time: 0700 - 0700				
5. Operations Personnel								
Operations Chief Day Night		Jeff Brand / Ed Locke Mark Kendall / Rich Boehm		Division/Group Supervisor		William Schaal		
Branch Director Day Night		Christian Childers Frank Royos		Air Attack Supervisor No.		Bennett / Innes		
6. Resources Assigned this Period								
Strike Team/Task Force/ Resource Designator	Leader		Number Persons	Trans. Needed	Drop Off PT./Time	Pick Up PT./Time	Check In	Check Out
SOF2	Scott Tavalero		1	N	For Entire Branch	24 HOUR SHIFT		
READ	Kerry Kellogg		1	N	0700	0700		
READ	Heidi Anderson		1	N	0700	0700		
STC MVU 9330C	Kremensky		21	N	0700	0700		
STG SLU 9396G	Woody Bousca		34	N	0700	0700		
CRW VNC CC1-1	Fred Burris		18	N	0700	1900		
CRW Vandenberg	Hendricks		18	N	0700	1900		
CRW Fulton IHC	Luis Anthony Orozco		22	N	0700	1900		
W/T AFV 5	B. Burch		1	N	0700	1900		
7. Control Operations Improve Line and Mop up East of Gibraltar Rd Drop Point Flores Flat on Gibraltar Road.								
8. Special Instructions Back haul garbage. Positive contact with public. Employ safe driving practices								
9. Division/Group Communication Summary								
Function	Frequency	System	Channel	Function	Frequency	System	Channel	
Command Valley floor to ridge top	RX 168.1000 N TX 170.4500 N Tone 123.0	King NIFC	NIFC CMD 2	Command Ridge top and North	RX 170.0125 N TX 165.2500 N Tone 123.0	King NIFC	NIFC CMD 9	
Tactical Div/Group	RX 168.0500 N TX 168.0500 N	King NIFC	NIFC TAC 1	Air to Ground	RX 167.9500 N TX 167.9500 N	King NIFC	BLM Air/Ground	
Prepared by (Resource Unit Ldr.) Tony Giacomini			Approved by (Planning Sect. Ch.) Bruce Schofield			Date 5/10/09	Time 1900 hrs	

DIVISION ASSIGNMENT LIST		1. Branch I		2. Division/Group DIV E					
3. Incident Name Jesusita		4. Operational Period Date: 5/11/09 – 5/12/09 Time: 0700 - 0700							
5. Operations Personnel									
Operations Chief Day Night		Jeff Brand / Ed Locke Mark Kendall / Rich Boehm		Division/Group Supervisor		Steve Stoll			
Branch Director Day Night		Christian Childers Frank Royos		Air Attack Supervisor No.		Bennett / Innes			
6. Resources Assigned this Period									
Strike Team/Task Force/ Resource Designator		Leader		Number Persons	Trans. Needed	Drop Off PT./Time	Pick Up PT./Time	Check In	Check Out
SOF2		Scott Tavalero		1	N	For Entire Branch	24 HOUR SHIFT		
STC BDF 6601C		Randy Vakovich		22	N	0700	1900		
STG TGU 9253G		Magnus Jonsson		30	N	0700	0700		
STG RRU 9475G		Benny Lozano		35	N	0700	0700		
STG LNU 9142G		Rob Bloom		30	N	0700	0700		
CRW HTF Black Mountain		Matt Hoggard		20	N	0700	1900		
CRW NWS Lone Peak		Matt Armantrout		22	N	0700	1900		
CRW Ironwood HS		Tony Johnson		20	N	0700	1900		
7. Control Operations Improve line and hold. Mop up 200' in. Drop point Shooting range on Gibraltar Road.									
8. Special Instructions Back haul garbage. Positive contact with public. Employ safe driving practices									
9. Division/Group Communication Summary									
Function	Frequency	System	Channel	Function	Frequency	System	Channel		
Command Valley floor to ridge top	RX 168.1000 N TX 170.4500 N Tone 123.0	King NIFC	NIFC CMD 2	Command Ridge top and North	RX 170.0125 N TX 165.2500 N Tone 123.0	King NIFC	NIFC CMD 9		
Tactical Div/Group	RX 168.600 N TX 168.600 N	King NIFC	NIFC TAC 3	Air to Ground	RX 167.9500 N TX 167.9500 N	King NIFC	BLM Air/Ground		
Prepared by (Resource Unit Ldr.) Tony Giacomini		Approved by (Planning Sect. Ch.) Bruce Schofield			Date 5/10/09		Time 1900 hrs		

DIVISION ASSIGNMENT LIST				1. Branch		2. Division/Group				
				III		DIV R				
3. Incident Name Jesusita				4. Operational Period Date: 5/11/09 - 5/12/09 Time: 0700 - 0700						
5. Operations Personnel										
Operations Chief		Day Jeff Brand / Ed Locke			Night Mark Kendall / Rich Boehm			Division/Group Supervisor		Roland Garcia / Michael Smith (T)
Branch Director		Day Enos / Navarro (T)			Night Michael Kaslin			Air Attack Supervisor No.		Bennett / Innes
6. Resources Assigned this Period										
Strike Team/Task Force/ Resource Designator	Leader	Number Persons	Trans. Needed	Drop Off PT./Time	Pick Up PT./Time	Check In	Check Out			
SOF Day	Arthur Tranberg	1	N	For entire branch	0700-1900					
SOF Night	Richard Sandoval	1	N	For entire branch	1900-0700					
TFL	John Ward	1	N	0700	0700					
STC MMU 9420C	Roy Evans	16	N	0700	0700					
STC Jesusita #2	Anthony Stornetta	20	N	0700	0700					
STC SLU 9340C	Bill Fisher	16	N	0700	0700					
STG TCU 9481G	Keven Patton	33	N	0700	0700					
STG MVU 9376G	Thomas Klimas	31	N	0700	0700					
STG TUU 9472G	Atilano Martinez	33	N	0700	0700					
STG BDU 9384G	Luis Ocampo	33	N	0700	0700					
STG NEU 9230G	Gary Lane	31	N	0700	0700					
W/T E-241 North Tree	Nate Brown	2	N	0700	0700					
W/T E-361 Dick Allen	Dick Allen	1	N	0700	0700					
7. Control Operations Mop up 200 feet in and patrol. Drop point 2										
8. Special Instructions Back haul garbage. Positive contact with public. Employ safe driving practices										
9. Division/Group Communication Summary										
Function	Frequency	System	Channel	Function	Frequency	System	Channel			
Command Valley floor to ridge top	RX 168.1000 N TX 170.4500 N Tone 123.0	King NIFC	NIFC CMD 2	Command Ridge top and North	RX 170.0125 N TX 165.2500 N Tone 123.0	King NIFC	NIFC CMD 9			
Tactical Div/Group	RX 166.7750 N TX 166.7750 N	King NIFC	NIFC TAC 6	Air to Ground	RX 167.9500 N TX 167.9500 N	King NIFC	BLM Air/Ground			
Prepared by (Resource Unit Ldr.) Tony Giacomini			Approved by (Planning Sect. Ch.) Bruce Schofield			Date 5/10/09		Time 1900 hrs		

DIVISION ASSIGNMENT LIST				1. Branch IV		2. Division/Group DIV T/Z	
3. Incident Name Jesusita				4. Operational Period Date: 5/11/09 – 5/12/09 Time: 0700 - 0700			
5. Operations Personnel							
Operations Chief Day Night		Jeff Brand / Ed Locke Mark Kendall / Rich Boehm		Division/Group Supervisor		Steve Burns	
Branch Director Day Night		VonTillo / Davis Christopher Bailey		Air Attack Supervisor No.		Bennett / Innes	
6. Resources Assigned this Period							
Strike Team/Task Force/ Resource Designator	Leader	Number Persons	Trans. Needed	Drop Off PT./Time	Pick Up PT./Time	Check In	Check Out
SOF	Gilbert Barrier	1	N	For entire branch			
ARCH	Lisa Cipolla	1	N	0700	0700		
STC MMU 9421C	Baraka Carter	16	N	0700	0700		
STC BTU 9210C	Scott Lingren	22	N	0700	0700		
STC Jesusita #1	Wilson	18	N	0700	0700		
STG MMU 9470G	Vic Loffin	33	N	0700	0700		
STG MEU 9110G	Mike Orme	33	N	0700	0700		
STG AEU 9276G	Jose Esparza	27	N	0700	0700		
CRW Blue Ridge IHC	A. Rahman	18	N	0700	1900		
CRW GNF Gila Hotshots	Dewey Rebbe	20	N	0700	1900		
CRW SNF Kings River	Eleazar Martinez Jr.	20	N	0700	1900		
CRW SBC Santa Barbara 1	Chris Linane	27	N	0700	1900		
STL LNU 9140L	Chris Vallerga	6	N	0700	0700		
STL TCU 9448L	Mark Sherrill	5	N	0700	0700		
7. Control Operations Mop up along East Camino Cielo from A-Z break to Windy Gap. Drop point 4							
8. Special Instructions Back haul garbage. Positive contact with public. Employ safe driving practices							
9. Division/Group Communication Summary							
Function	Frequency	System	Channel	Function	Frequency	System	Channel
Command Valley floor to ridge top	RX 168.1000 N TX 170.4500 N Tone 123.0	King NIFC	NIFC CMD 2	Command Ridge top and North	RX 170.0125 N TX 165.2500 N Tone 123.0	King NIFC	NIFC CMD 9
Tactical Div/Group	RX 168.2500 N TX 168.2500 N	King NIFC	NIFC TAC 7	Air to Ground	RX 167.9500 N TX 167.9500 N	King NIFC	BLM Air/Ground
Prepared by (Resource Unit Ldr.) Tony Giacomini		Approved by (Planning Sect. Ch.) Bruce Schofield		Date 5/10/09		Time 1900 hrs	

DIVISION ASSIGNMENT LIST		1. Branch		2. Division/Group Contingency Group page 1/3			
3. Incident Name Jesusita		4. Operational Period Date: 5/11/09 – 5/12/09 Time: 0700 – 0700					
5. Operations Personnel							
Operations Chief	Day Night	Jeff Brand / Ed Locke Mark Kendall / Rich Boehm		Division/Group Supervisor		Abdul Ahmad	
Branch Director				Air Attack Supervisor No.		Bennett / Innes	
6. Resources Assigned this Period							
Strike Team/Task Force/ Resource Designator	Leader	Number Persons	Trans. Needed	Drop Off PT./Time	Pick Up PT./Time	Check In	Check Out
DIVS	David Kay	1	N	0700	0700		
STAM	Mark Dorch	1	N	0700	0700		
STAM	Tim Bingham	1	N	0700	0700		
STAM (T)	Edward Facio	1	N	0700	0700		
STAM (T)	Edward Galipeault	1	N	0700	0700		
DOZB	Nicholas Perricelli	1	N	0700	0700		
TFLD	Stephen Richardson	1	N	0700	0700		
STA OES 5801A	Jeff Cole	20	N	0700	0700		
STA OES 2801A	Doug Rogers	21	N	0700	0700		
STA OES 4800A		20	N	0700	0700		
STA OES 4802A	David Ray	21	N	0700	0700		
STA OES 2800A	Dan McCabe	19	N	0700	0700		
STA OES 1809A	Chris Fabrizio	21	N	0700	0700		
STC TCU 9441C	Mike Olivaria	21	N	0700	0700		
STC AEU 9271C	Michael Webb	21	N	0700	0700		
STC RRU 9310C	Steven Gallegos	16	N	0700	0700		
STC AEU 9270C	Charles Blankenheim	21	N	0700	0700		
STC XAM 4025C	Raymond Blankenheim	16	N	0700	0700		
STC OES 1870C	Jim Kross	22	N	0700	0700		
7. Control Operations							
Provide I.A. to county and incident as needed.							
Maintain 3 minute response time.							
Drop point Live Oak staging.							
8. Special Instructions							
Positive contact with public.							
Employ safe driving practices							
9. Division/Group Communication Summary							
Function	Frequency	System	Channel	Function	Frequency	System	Channel
Command	RX 151.355 N TX 159.300 N Tone 10 (107.2)	King NIFC	CDF Command 1	Tactical Div/Group Primary	RX 154.2650 W TX 154.2650 W	King NIFC	White 2
Tactical Div/Group Secondary	RX 173.9125 TX 173.9125	King NIFC	R5 TAC 4	Tactical Div/Group	RX 173.9625 TX 173.9625	King NIFC	R5 TAC 5
Prepared by (Resource Unit Ldr.) Tony Giacomini		Approved by (Planning Sect. Ch.) Bruce Schofield		Date 5/10/09		Time 1900 hrs	

DIVISION ASSIGNMENT LIST		1. Branch		2. Division/Group			
3. Incident Name JESUSITA		4. Operational Period Date: 5/11/09-5/12/09		SUPPRESSION REPAIR Page 1 of 2 Time: 0700-0700			
5. Operations Personnel							
Operations Chief Day Night		Jeff Brand / Ed Locke Mark Kendall / Rich Boehm		Division/Group Supervisor Mary Huggins / David Shy			
Branch Director				Air Attack Supervisor No. Bennett / Innes			
6. Resources Assigned this Period							
Strike Team/Task Force/ Resource Designator	Leader	Number Persons	Trans. Needed	Drop Off PT./Time	Pick Up PT./Time		
FOBS	Sam Johnson	1	N	0700	1900		
FOBS	Jim Day	1	N	0700	1900		
FOBS	Wayne Powell	1	N	0700	1900		
FOBS	Eric Wahl	1	N	0700	1900		
FOBS	Chad Britton	1	N	0700	1900		
FOBS	Ven Deocraiz	1	N	0700	1900		
FOBS	Todd Edwards	1	N	0700	1900		
FOBS	Keith Fuggles	1	N	0700	1900		
DOZB	Michael Hoose	1	N	0700	1900		
DOZB	Dean Millan	1	N	0700	1900		
7. Control Operations Begin suppression repair efforts using attached specifications for identified areas in Divisions O, L, I, and G. Coordinate with Operations for areas in Division P that may be ready for suppression repair efforts. Continue GPS mapping and data gathering in all remaining Divisions.							
8. Special Instructions Reprogram HT radios prior to going to fireline. Request additional crew and equipment resources from staging Contact Dave Shy no later than 1500 hours for next day's resource needs.							
9. Division/Group Communication Summary							
Function	Frequency	System	Channel	Function	Frequency	System	Channel
Command Valley floor to ridge top	RX 168.1000 N TX 170.4500 N Tone 123.0	King NIFC	NIFC CMD 2	Command Ridge top and North	RX 170.0125 N TX 165.2500 N Tone 123.0	King NIFC	NIFC CMD 9
Tactical Div/Group	RX 151.1375 N TX 151.1375 N TONE 156.7	King NIFC	V-Tac 1	Air to Ground	RX 167.9500 N TX 167.9500 N	King NIFC	BLM Air/Ground
Prepared by (Resource Unit Ldr.) Mary Huggins		Approved by (Planning Sect. Ch.) Bruce Schofield		Date 5/10/09		Time 1930 hours	

DIVISION ASSIGNMENT LIST		1. Branch	2. Division/Group SUPPRESSION REPAIR Page 2 of 2				
3. Incident Name JESUSITA		4. Operational Period Date: 5/11/09-5/12/09 Time: 0700-0700					
5. Operations Personnel							
Operations Chief Day Night	Jeff Brand / Ed Locke Mark Kendall / Rich Boehm		Division/Group Supervisor	Mary Huggins / David Shy			
Branch Director		Air Attack Supervisor No.	Bennett / Innes				
6. Resources Assigned this Period							
Strike Team/Task Force/ Resource Designator	Leader	Number Persons	Trans. Needed	Drop Off PT./Time	Pick Up PT./Time		
STG TCU 9476G	Adam Angels	34	N	0700	1900		
STG FKU 9474G	Ed Clayton	34	N	0700	1900		
STG HUU 9122G	Donald Scarlett	31	N	0700	1900		
STG MVU 9386G	Nick Clements	34	N	0700	1900		
STG MEU 9111G	Brian Bishop	34	N	0700	1900		
STL MEU 9118L	Jess Derickson	8	N	0700	1900		
DOZ E-189 Huckaby	Mike Huckaby	2	N	0700	1900		
DOZ E-190 Nocis	Tony Nocis	2	N	0700	1900		
DOZ E-195 Quality AG	Jake Ellis	1	N	0700	1900		
DOZ E-196 R Williams	J. Moniot	2	N	0700	1900		
Backhoe E-265 Stines	D. Stines	1	N	0700	1900		
Excavator E-397 Roen	M. Brown	1	N	0700	1900		
W/T E-359 Aqua Express	Fred Dresser	1	N	0700	1900		
7. Control Operations Begin suppression repair efforts using attached specifications for identified areas in Divisions O, L, I, and G. Coordinate with Operations for areas in Division P that may be ready for suppression repair efforts. Continue GPS mapping and data gathering in all remaining Divisions.							
8. Special Instructions Reprogram HT radios prior to going to fireline. Request additional crew and equipment resources from staging Contact Dave Shy no later than 1500 hours for next day's resource needs.							
9. Division/Group Communication Summary							
Function	Frequency	System	Channel	Function	Frequency	System	Channel
Command Valley floor to ridge top	RX 168.1000 N TX 170.4500 N Tone 123.0	King NIFC	NIFC CMD 2	Command Ridge top and North	RX 170.0125 N TX 165.2500 N Tone 123.0	King NIFC	NIFC CMD 9
Tactical Div/Group	RX 151.1375 N TX 151.1375 N TONE 156.7	King NIFC	V-Tac 1	Air to Ground	RX 167.9500 N TX 167.9500 N	King NIFC	BLM Air/Ground
Prepared by (Resource Unit Ldr.) Mary Huggins		Approved by (Planning Sect. Ch.) Bruce Schofield		Date 5/10/09		Time 1930 hours	

AIR OPERATIONS SUMMARY OPERATIONAL PERIOD DATE: DAY SHIFT DATE: 05/11/09 START: 0700 END: 2200

(Expanded Form for Large Operations)

1. INCIDENT NAME: JESUSITA	2. PREPARED BY: S. Packwood	PREPARED DATE/TIME: 05/10/09 1930	3.
4. REMARKS (Safety Notes, Hazards, Air Operations Special Equipment., etc.): *****HIGH VOLTAGE POWERLINES within the fire perimeter running East and West**** Santa Barbara Tower; 119.700 Santa Ynez Tower: 122.800 All GPS data to be collected (degrees, minutes & decimal minutes) **Avoid aerial application of retardant or foam within 300' of waterways, bodies of water. If retardant is dropped within these areas, notify AOB with Lat & Long, est. of gallons, and a map. Los Padres ECC 805-938-9164 Santa Maria AAB for Air Tanker reloading		SUNRISE: 0605 SUNSET : 1953	5. TFR: A#111 Altitude: 10,000' MSL Polygon over fire Notam 9-8089
TRACK RETARDANT DROP LOCATIONS			

6. PERSONNEL	Phone	7. REQUENCIES	AM	FM	8. FIXED-WING # Avail / Type/ Make-Model / FAA N# / Base(s)
AOBD: Chris Avina	707 217 9278	AIR/AIR FW:	131.475	151.2725	Air Tactical AA-340 AA-13
AOBD: (T) Scott Packwood	530 310-2212		AIR/AIR RW:	135.575	
ATGS: Johnson	559 740-8672	AIR/GROUND:			167.950
ATGS: Crawford	559 281-4308	DECK:		163.100	
HLCO: M. Wright / T. Caughlin		COMMAND RPT	RX168.100 TX170.450 Tones Rx 123.0		Airtankers 5 4 Type I's ----P3's 1 VLAT ----DC 10
ASGS: Mark Gradek	707696-3579	Air Guard	168.625		
HEBM. Greg Bertelli (Santa Ynez)	707 494-8822				Other : Cobra
Night AOB:					
SMX Santa Maria Tanker Base	805 937-5059 ext 205				
PTV Porterville tanker Base	559 789-0109				

9. HELICOPTERS (Use Additional Sheets As Necessary)

FAA N#	TY	MAKE/MODEL	BASE	AVAIL	START	REMARKS	FAA N#	TY	MAKE/MODEL	BASE	AVAIL	START	REMARKS
							C507	2	COBRA	SY	0730		A/A Map/ IR
							63W	2	UH1H	SY	0730		Restricted Cat.
							7PJ	2	UH1H	SY	0730		Restricted Cat.
SBC C308	2	Bell 205	SY	0730		Night Capable	21Z	2	Bell 212HP	SY	0730		Exclusive Use
	2						6HX	2	205++	SY	0730		
CalFire 305	2	Bell 205	SY	0730									
N498PT	3	AS350B	SY	0730		HLCO/recon							
N22EA	3	206B3	SY	0730		HLCO							
N265KA	1	K1200	SY	0730									
N15450	1	S-61	SY	0730									
719	1	OH-6A	SY	0730									
717	1	OH-6A	SY	0730									

10. TASK/MISSION/ASSIGNMENT (Use ICS-220a if additional space needed; Type/Function includes: Air Tactical, Retardant, Recon, Personnel Transport, Water Dropping, etc.)

TYPE/FUNCTION	NAME OF PERSONNEL OR CARGO (if applicable) OR INSTRUCTIONS FOR TACTICAL AIRCRAFT	MISSION START	8FLY FROM	FLY TO
Air Tactical	Direct A/C operations, coordinate with Ops.	0630		Fire
Bucket support	HELICOPTERS. SUPPORT CREWS ON THE LINE.			
PAX/Cargo	SLING LOADS NEED TO BE ORDERED BY 1400 HRS. ORDER THROUGH COMMUNICATIONS			
Medevac	See Medical Plan for specifics.			
Recon	IC, OSC, and SUL as requested			
Helispot Construction	Once helispot established/approved/numbered, notify Air Ops with Lat Long			
Helitack	When on fireline, be sure to follow LCES, 10s and 18s. Use Lookouts and Trigger Points.			
Mobile Retardant Base & Torch Base	Helicopter Retardant Dip Site Salvar & Via Gaitero East of Hwy 154			
Communications				

11. Helispot, Dip Site Portable Retardant Base and Sling Spot Information-

<u>HELI-SPOTS #</u>	<u>DIP SITES</u>	<u>SLING SPOT #</u>	<u>DIVISION</u>	<u>LATITUDE</u>	<u>LONGITUDE</u>	<u>REMARKS</u>
Santa Ynez HB				34* 36.419	120* 04.185	Helibase at Santa Ynez Airport
	Laurel Cyn.			34* 27.3	119* 36.7	Reservoir
	San Marcos			34* 27.387	119* 45.989	RETARDANT Dip Site
	Palace Dip			34* 26.98	119* 39.40	100' Longline minimum
	Big One			34* 29.555	119* 49.270	
	Windy Dip			34* 30.574	119* 47.789	100' Longline
H-1				34* 27.005	119* 46.191	Admin / Recon flights
H-2				34* 30.901	119* 47.999	

SAFETY MESSAGE

INCIDENT NAME

JESUSITA

Date
Prepared
05/10/09

Time
Prepared
1800

OPERATIONAL PERIOD (DATE/TIME)
5/11-5/12/2009 0700-0700

- Hwy 154 has been opened to the general public.
- Drink Water - Stay Hydrated!
- Tail Gate Safety Briefings should be given whenever you have a change of assignment or location.
- Follow the traffic plans, slow down, drive defensively and don't block traffic.
- Use traffic controls while parked on roadway. Watch out for civilians and utility vehicles as they return to the evacuated areas.
- Maintain attentiveness; don't be deceived by the fires passive appearance.
- Watch for a change in wind conditions, direction and intensity.
- The SAFETY of all firefighters and the public is the first concern. Property protection will NOT compromise firefighter safety.
- Maintain your Situational Awareness.

(Situation awareness involves being aware of what is happening around you, and to understand how information, events, and your own actions will impact your goals and objectives, both now and in the near future.)

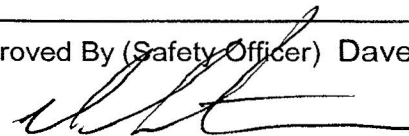
**Ensure firefighters have good anchor points, escape routes, and safety zones.
Remember LCES.**

Lookout(s), Communication(s), Escape routes and Safety zone(s)

Prepared By:
Keith Callison



Approved By (Safety Officer) Dave Stonum



Fire Weather Forecast

FORECAST NO: 5
PREDICTION FOR: 0700 Mon – 0700 Tue

NAME OF FIRE: Jesusita
UNIT: CAL Fire, SBC, STB, MTO,
LPF Santa Barbara RD

SHIFT DATE: Monday, May 11, 2009

SIGNED:


Rob Balfour
Incident Meteorologist

TIME AND DATE 1833 PDT Sunday
FORECAST ISSUED: May 10, 2009

WEATHER DISCUSSION:

Marine layer depth between 1500 feet and 2100 feet during the day will lower during the evening hours to around 300 feet as High pressure builds to the north and produces sundowner. As a result, Branches I, II, and III are likely to see the warmest temperatures and lowest humidity after sunset with increasing winds until midnight. Over Branch IV the winds will increase during the afternoon and evening hours but may temporarily diminish around midnight...then increase again just before sunrise Tuesday. Moderate sundowner winds are likely Tuesday through Wednesday before the supporting weather pattern breaks down. Compared to last week, this wind event is forecast to be half as strong.

WEATHER FORECAST:

WEATHER: Branches I, II, III... Cloudy with fog through most of the day then clearing during the late afternoon and evening hours.
Branch IV & Div A... Sunny/Clear.

TEMPERATURES:

Branch I & III...	Highs 71-75°	Lows 52-55°
Branch II...	Highs around 68°	Lows 52-55°
Branch IV & Div A...	Highs 75-82°	Lows 56-59°

HUMIDITY:

Branch I & III...	Min 25%	Max 80-100%
Branch II...	Min 30%	Max 80-100%
Branch IV & Div A...	Min 15%	Max 40%

EYE-LEVEL WINDS:

RIDGETOP - until 1100 PDT - North to Northeast 7 mph with gusts 15 mph
1100-1400 PDT - Northwest 7-10 with gusts 15 mph
1400-2300 PDT - Northwest 17 mph with gusts 25 to 40 mph
2300-0300 PDT - North to Northeast 7 to 15 mph with gusts 30 mph
0300-0700 PDT - North to Northeast 10 to 15 mph with gusts to 45 mph


SLOPE/VALLEY - until 1000 PDT – downslope/Southeast 1-3 mph
1000-1800 PDT – upslope/Southeast 3-5 mph occasional gusts 8 mph
1800-2300 PDT – North to Northwest 12 mph with gusts to 35 mph through aligned valleys and canyons.
2300-0700 PDT – North to Northeast 5-10 mph with gusts to 25 mph through aligned valleys and canyons.

STABILITY/INVERSION:

A strong inversion near 1500 ft MSL will lift to 2100 ft MSL by 1400 PDT. After 1700 PDT inversion expected to lower to around 1500 feet and breakup with transport winds increasing to Northwest 20 mph. Overnight/Tuesday morning mixing to 4000 feet MSL with transport winds Northeast 17 mph.

OUTLOOK FOR Tuesday and Wednesday, May 12-13, 2009: Sunny/Clear. Highs 80-95°. Lows 55-65°. Minimum relative humidity 7-10%. Maximum relative humidity 35-50%. North to northeast winds 20 mph with gusts 45 mph across ridges and down aligned canyons/valleys during the early morning and evening hours...otherwise slopes/valleys upslope 3-8 mph during the day and downslope 3 to 6 mph at night.

FIRE BEHAVIOR FORECAST

FORECAST NUMBER: 5	TYPE OF FIRE: Wildland
FIRE NAME: Jesusita	OPERATIONAL PERIOD: May 11, 2009 @ 0700 hours
DATE ISSUED: May 10, 2009 at 1800 hours	24 hour operational period
UNIT: CAL-FIRE, LPF, SBC, STB, MTO	SIGNED: 
	Typed/printed: William Baxter FBAN ICT 4

INPUTS

WEATHER SUMMARY:

Daytime = hazy and fog inversion in lower elevations, and sunny on Camino Cielo Ridgeline
Temp: Around 75 degrees. RH: 80% lower, 60% middle, and 30% top of ridge
Winds = Upslope/southeast 3-5 with gusts to 15 mph

Expect North to Northwest winds to surface late afternoon to nightfall!

Nighttime = Clearing with temps 70 degrees and RH's 15-30%.
Winds = North/northwest 12 mph with gusts to 35 mph. These winds will be approximately one third as strong as the last major Sundowner Wind Event as a measure of comparison.

OUTPUTS

FIRE BEHAVIOR

GENERAL: This fire will be topographic-fuels dominated until the North Winds surface in the late afternoon/nightfall. Daytime fire activity should continue the pattern of the last two days with limited small flare ups and isolated smokes. Narrow head-fire runs are still possible with rates of spread of 1/2 to 1 mph however these runs would be expected to stop at the ridgetops.

The 15 mph wind threshold will be reached once North Winds surface, resulting in running brush fires with spotting distances up to 1/2 to 1 mile. The primary mechanism of fire spread for this incident has been by long range spotting into receptive fuels (primarily grass). The risk of fire spread past control lines is likely at any time running brush fires are pushing fire brands into the wind stream. Careful attention needs to be paid to what's occurring within 1 mile of the fire edge in order to predict expected fire behavior in your area.

These strong surfacing winds could produce rates of spread of 1 to 2 mph with head fire flame length of 30 to 60 feet. The fuels are 50 year old mixed chaparral with a heavy dead component and cured annual grasses. Live fuel moistures are 135%. Fine fuel moistures are 7% with a 50% probability of ignition. 10 hour dead fuel moistures = 8% and 100 hour dead fuels are 14%.

SPECIFIC:

Branches I and III: The upper shoulder on the east flank is the most prone to fire line breach due to the predicted NW winds, and the west flank upper shoulder is also vulnerable with wind expected to funnel down Maria Ygnacio Creek drainage. The IR recon on 5/10 indicates residual hot spots in these areas.

Branch IV: The most consistent low humidity's and highest winds will result in increasing flare ups in areas that appear out. Winds should be favorable in keeping fire south of Camino Cielo Ridge.

Branch II: No fire growth is anticipated since most of the fine fuels have been previously consumed, however there is potential for islands to burn out.

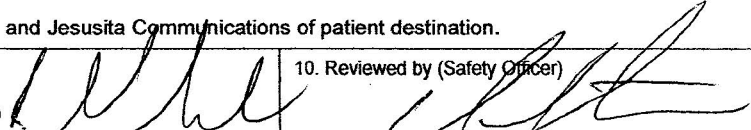
AIR OPERATIONS: Coastal fog and smoke may limit visibility during the day. Strong winds after sundown will limit potential aircraft operations. Power lines exist in the area.

SAFETY

- Maintain situational awareness of the long range spotting potential from interior running brush fires when North Winds are surfacing.
- This fire will become wind dominated when wind speeds exceed 15 mph.

INCIDENT RADIO COMMUNICATIONS PLAN			Incident Name Jesusita			Date/Time Prepared 5/10 1900			Operational Period Date/Time May 11 0700 to 0700		
Ch #	Function	Channel Name/Trunked Radio System Talkgroup	Assignment	RX Freq	N or W	RX Tone/NAC	TX Freq	N or W	Tx Tone/NAC	Mode A, D or M	Remarks
1	Command	NIFC CMD 2	Command	168.1000	N		170.4500	N	123.0	A	Valley Floor to Ridge top
2	Command	NIFC CMD 9	Command	170.0125	N		165.2500	N	123.0	A	Ridge top and North of
3	Tactical	NIFC TAC 1	DIV A & C	168.0500	N		168.0500	N		A	Branch 1
4	Tactical	NIFC TAC 3	DIV E & F	168.6000	N		168.6000	N		A	Branch 1
5											
6											
7	Tactical	NIFC TAC 2	DIV G & I	168.2000	N		168.2000	N		A	Branch 2
8	Tactical	NIFC TAC 4	DIV L & O	164.1375	N		164.1375	N		A	Branch 2
9	Tactical	NIFC TAC 5	DIV P	166.7250	N		166.7250	N		A	Branch 3
10	Tactical	NIFC TAC 6	DIV R	166.7750	N		166.7750	N		A	Branch 3
11	Tactical	NIFC TAC 7	DIV T & Z	168.2500	N		168.2500	N		A	Branch 4
12	CalCord	EMS Aircraft	All Divisions	156.075	W		156.075	W		A	Ground to EMS Aircraft
13	Alr/Ground	BLM Alr/Ground	Alr/Ground	167.9500	N		167.9500	N		A	Alr to Ground
14	Alr Guard	Alr Guard	Emergency	168.6250	N		168.6250	N	110.9	A	Alr/Ground Emergency
15	Alr/Ground	BLM Alr/Ground	Alr/Ground	167.9500	N		167.9500	N		A	Alr to Ground
16	Alr Guard	Alr Guard	Emergency	168.6250	N		168.6250	N	110.9	A	Alr/Ground Emergency
Prepared by (Communications Unit) Alan K Knopp						Incident Location Santa Barbara Country State CA Latitude 34 27.933 N Longitude 119 42.827					

The convention calls for frequency lists to show four digits after the decimal place, followed by either an "N" or a "W", depending on whether the frequency is narrow or wide band. Mode refers to either "A" or "D" indicating analog or digital (e.g. Project 25) or "M" indicating mixed mode. All channels are shown

MEDICAL PLAN	1. Incident Name	2. Date Prepared	3. Time Prepared	4. Operational Period							
	Jesusita	05/10/09	1700	5/11-5/12 0700-0700							
5. Incident Medical Aid Station											
Medical Aid Stations	Location			Paramedics Yes No							
Medical Unit (MERT)	Live Oak Camp			X							
Medical Unit	Earl Warren Base Camp			X							
6. Transportation											
A. Ambulance Services											
Name	Address		Phone		Paramedics Yes No						
AMR	Santa Barbara -				X						
CAL/STAR Air Ambulance	Santa Maria		(805) 546-1915		X						
Santa Barbara County	Santa Ynez				X						
B. Incident Ambulances											
Name	Location			Paramedics Yes No							
AMR 2 (ALS)	Earl Warren Base Camp			X							
7. Hospitals											
Name	Address		Travel Time Air Ground		Phone		Helipad Yes No		Burn Center Yes No		
S.B. cottage Hosp.	Pueblo @ Bath		X		(805) 569-7210		X		X		
Sherman Oaks Burn Center	4929 Van Nuys Blvd. Sherman Oaks CA 91403		40 min. 90 min.		(818)981-7111 Ext. 4580		X		X		
8. Medical Emergency Procedures											
<ol style="list-style-type: none"> 1. Provide immediate care, treatment and notify supervisor. 2. Supervisor notify Branch and/or Ops with injury type (s), lat and long and physical location. 3. Branch/Ops notify Jesusita communications and request appropriate medical transport. 4. Communications notify Santa Barbara Dispatch for dispatching/transportation request. Notify Jesusita Safety Officer and Medical Unit. 5. Monitor and use CALCORD for contact with Air Ambulance. 6. Advise Santa Barbara Dispatch and Jesusita Communications of patient destination. 											
Prepared by (Medical Unit Leader)						10. Reviewed by (Safety Officer)					
Robert Marshall (MEDL Trainee)											

Jesusita Phone List

Ordering -	805-563-8314 Fax 805-563-0385
Cal Fire / Equipment Time -	Fax 805-563-2548 805-563-2419
Cal Fire Accomadations -	Fax 805-563-2153 805-563-5790
Cal Fire Comps / Claims -	Fax 805-687-4385 805-563-5731
Cal Fire Finance -	Fax 805-563-0369 805-563-0274
Plans -	805-563-2409
Information-	Fax 805-563-0843 805-563-0841
Hired Equip -	707-479-5371
Resource Unit -	805-563-0928 805-563-0831
Fire Behavior Analyst	707-391-5570
Los Padres Resource Advisor -	805-878-4057 805-563-0843
Copy Trailer -	Fax 805-563-0814 805-563-0809
Comm Unit	Line -1 805-563-0694 Line -2 805-563-0782 FAX 805-563-0802
Federal Time Unit -	805-563-5403 805-563-5709
Los Padres Expanded -	805-938-9142 Ext. 232
Medical	925-588-6739
Ground Support -	925-324-9188
Training Specialist	619-672-0145

TRAINING SPECIALIST MESSAGE

A Training Specialist is on this incident.

All trainees working on position task books need to register with the Training Specialist in order to receive proper credit for your assignment.

INCIDENT TRAINEE DATA FORM

(Fill in ALL AREAS, and PLEASE PRINT!)

Trainee Data

Title/Rank Capt, ENGB, B/C, FAE, Engineer, Etc.		Trainees Name: (First Last)			
Agency Training Officer: (Rank First Last)			Trainee Position: (STEN, DIVS, ENB, Etc...)		<input type="checkbox"/> Female <input type="checkbox"/> Male
Agency Name:			Date Assigned:		
Agency Address: (Street Number and Name)					
Agency Address: (City, State and Zip Code)				O, E, or C Number	
State	Three Letter Designator	Agency/Department Phone Number: ()	Crew Name: (Hand Crews Only)	Crew Contact Phone # @ Event:	
Functional Area Please Check <input checked="" type="checkbox"/> <input type="checkbox"/> Command <input type="checkbox"/> Operations <input type="checkbox"/> Plans <input type="checkbox"/> Logistics <input type="checkbox"/> Finance <input type="checkbox"/> Exp Dis. <input type="checkbox"/> Other					
Please Check <input checked="" type="checkbox"/> <input type="checkbox"/> USFS <input type="checkbox"/> BLM <input type="checkbox"/> BIA <input type="checkbox"/> NPS <input type="checkbox"/> FWS <input type="checkbox"/> STATE <input type="checkbox"/> LOCAL <input type="checkbox"/> OTHER					

Please circle all that apply:

- | | | |
|---|---|---|
| 1. Trainee has valid Red Card or agency certification card (provide copy if applicable) | Y | N |
| 2. Trainee has current position task book issued by home unit? | Y | N |
| 3. Trainee needs incident issued task book with concurrence by home unit | Y | N |
- It is the Trainees responsibility to contact their home unit and obtain a letter or Copy of open task Book

SUBMIT COPY OF COVER OF YOUR TASK BOOK WITH THIS FORM!

Trainer/Evaluator Data

Name: (Rank First Last)			Position on event:		
Agency/Department Name					
Agency/Department Address: (Street Number, Name)					
Agency/Department Address: (City, State and Zip Code)				O, E, or C Number	
Agency Phone#: ()			Cell or other contact #: ()		
State	Three Letter Designator	Unit/Strike Team # (used at Check-in):	Cell/Contact Number @ event:		

**INCIDENT PERSONNEL
PERFORMANCE RATING**

INSTRUCTIONS: The immediate job supervisor will prepare this form for each subordinate. It will be delivered to the planning section before the rater leaves the fire. Rating will be reviewed with employee who will sign at the bottom.

THIS RATING IS TO BE USED ONLY FOR DETERMINING AN INDIVIDUAL'S PERFORMANCE

1. Name		2. Fire Name and Number		
3. Home Unit (address)		4. Location of Fire (address)		
5. Fire Position	6. Date of Assignment From: To:	7. Acres Burned	8. Fuel Type(s)	

9. Evaluation

Enter X under appropriate rating number and under proper heading for each category listed. Definition for each rating number follows:

0 - Deficient. Does not meet minimum requirements of the individual element.

DEFICIENCIES MUST BE IDENTIFIED IN REMARKS.

1 - Needs to improve. Meets some or most of the requirements of the individual element.

IDENTIFY IMPORVEMENT NEEDED IN REMARKS.

2 - Satisfactory. Employee meets all requirements of the individual element.

3 - Superior. Employee consistently exceeds the performance requirements.

Rating Factors	Hot Line				Mop-Up				Camp				Other (specify)			
	0	1	2	3	0	1	2	3	0	1	2	3	0	1	2	3
Knowledge of the job																
Ability to obtain performance																
Attitude																
Decisions under stress																
Initiative																
Consideration for personnel welfare																
Obtain necessary equipment and supplies																
Physical ability for the job																
Safety																
Other (specify)																

10. Remarks

11. Employee (signature) This rating has been discussed with me	12. Date
13. Rated By (signature followed by Printed name)	14. Date
15. Home Unit (address)	16. Position of Fire

ICP FACILITIES MAP



NOT TO SCALE

SHOWERS
LAUNDRY

* Right hand
turn only

EARL WARREN
SHOWGROUNDS

CHAINSAW
VENDOR

SUPPLY

DUMPSTER

COMP/CLAIMS
PERSONNEL TIME
MOTELS
EQUIP TIME

PIO
USFS
LRF

PLANS
SAFETY
LOGS
FACILITIES
ORDERING

DEMOB
CHECK IN

MEETING
TENT

AIR OPS
OPS

COMMUNICATIONS
X

BRIEFING

CLERICAL
GIS

MEDICAL

VERIZON

LAW
BRANCH

MEDIA

ENGINES
PARKING

MKU

LUNCHES
ICE

OVERHEAD
PARKING

ENGINES
PARKING

LAS POSITAS

DOZER TRANSPORT

CALLE REAL

FUEL AND
GROUND
SUPPORT

TURN RIGHT ON HITCHCOCK

Earl Warren Fire Deployment Traffic Plan

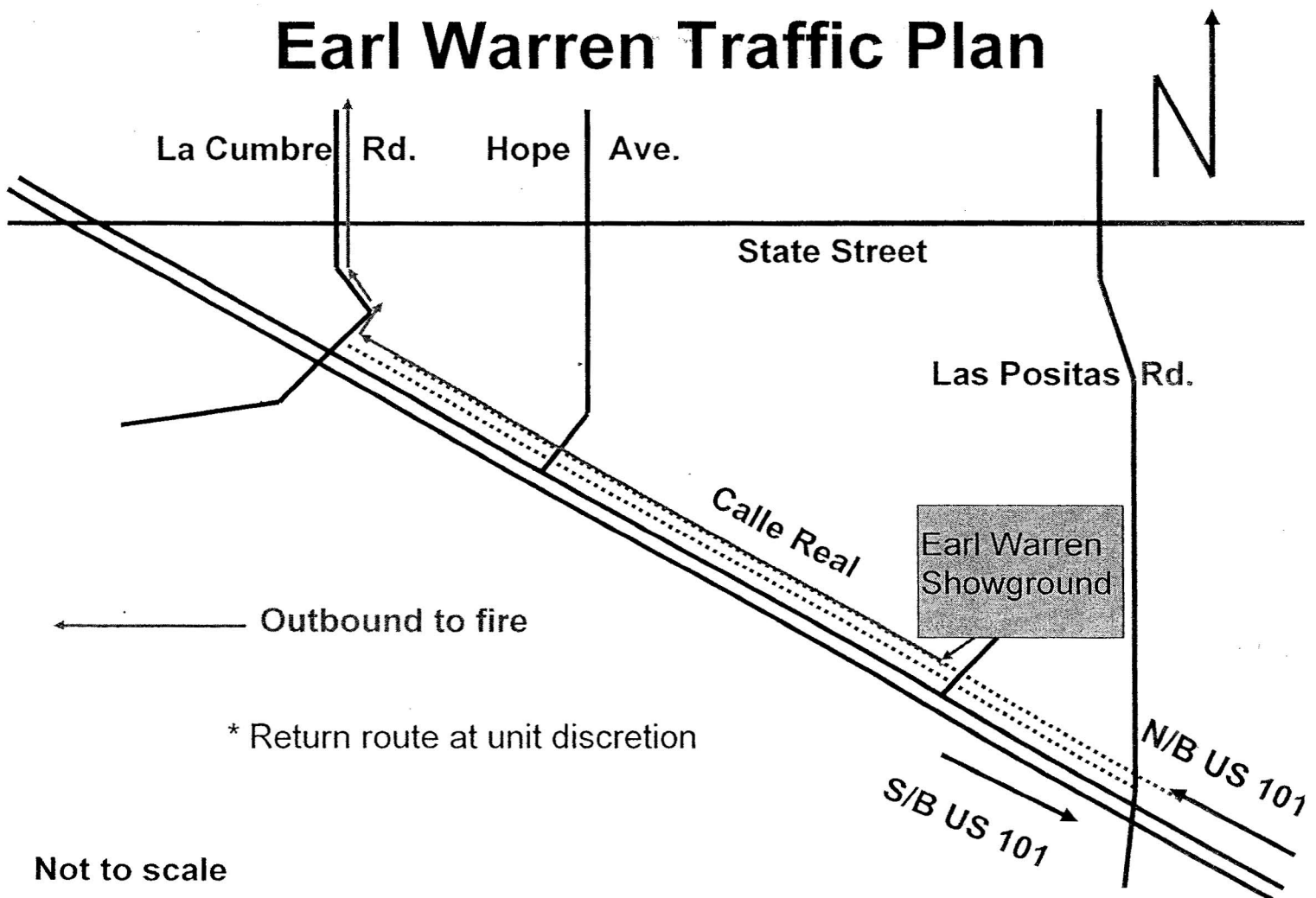
Outbound and return traffic will be directed to one of the two following routes at the parking lot exit.

Outbound Traffic

- Fire equipment will exit parking lot, turn right (west) onto Calle Real, continue past Hope Ave to La Cumbre Road, turn right (north) and continue to Hwy 192/Foothill Road.

Returning traffic route at unit discretion, enter Earl Warren Showgrounds through Calle Real gate.

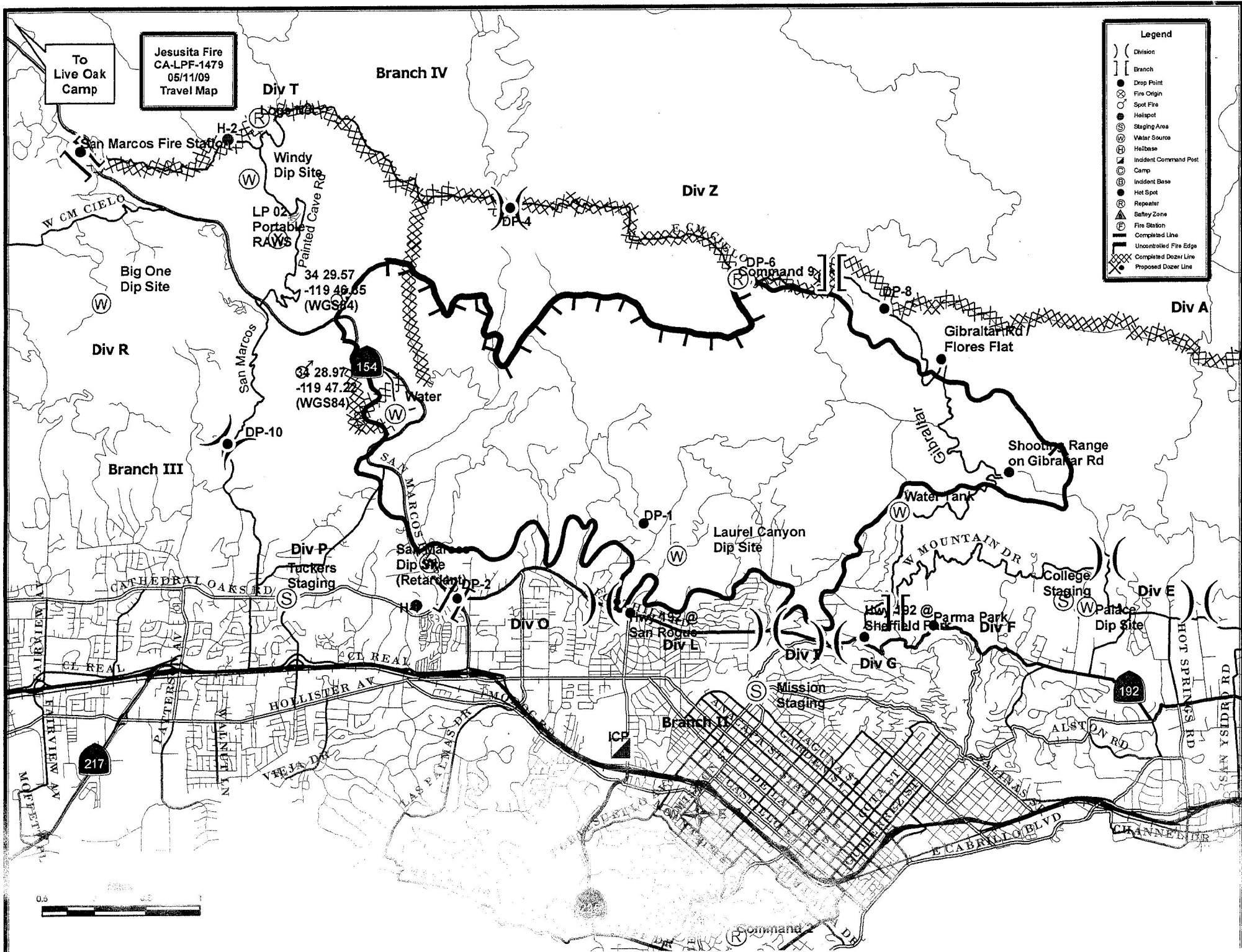
Earl Warren Traffic Plan



* Return route at unit discretion

Not to scale

Thomas Bros Map Page 985



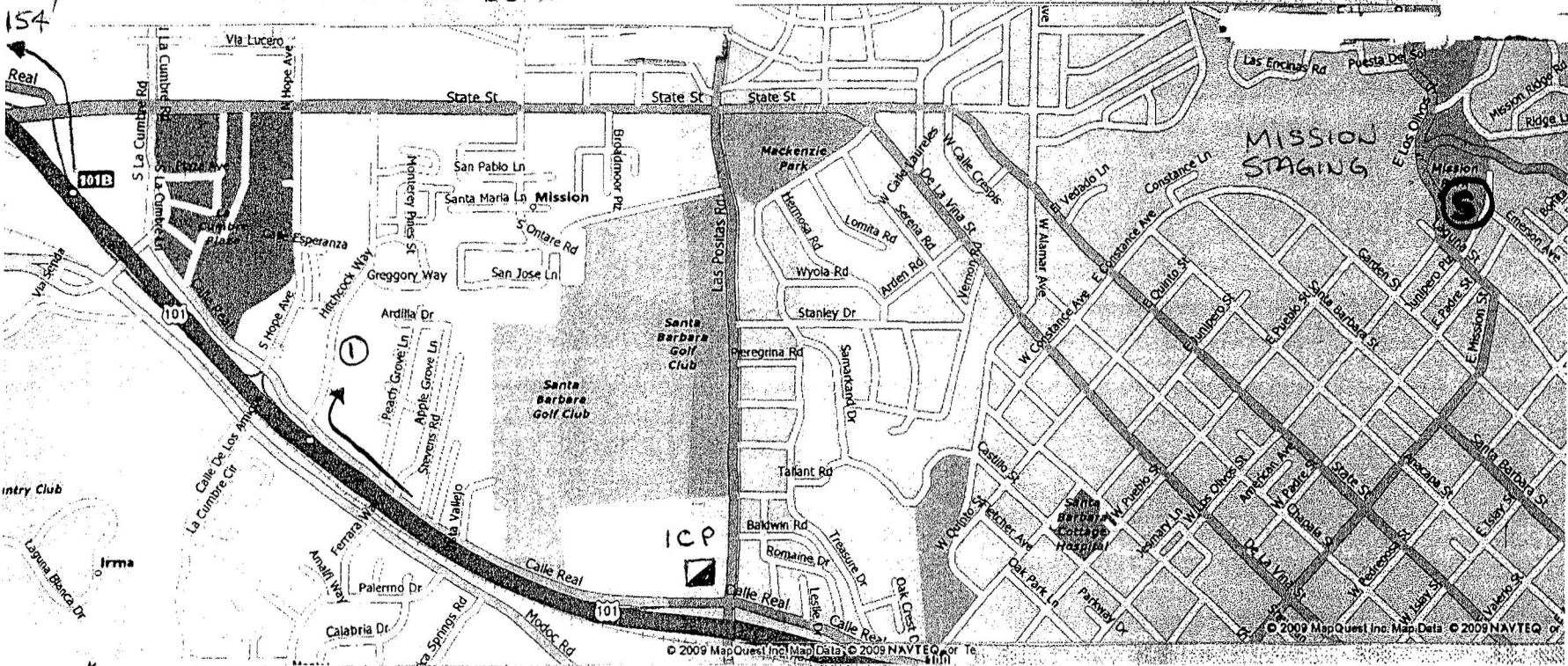
TO LIVE OAK CAMP
(AT RANCHO SAN MARCOS
GOLF COURSE)

LOCAL AREA MAP

N ↑

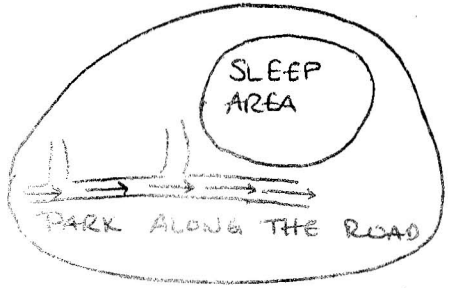
HWY 154 ON RIGHT SIDE
PAST PARADISE ROAD

Hwy
154



① FUEL, INSPECTION, REPAIR

↓
ELINGS
PARK
PRE-DEMOS
STAGING



NOT TO SCALE

↑
TO LIVE OAK
CAMP
(AT RANCHO
SAN MARCOS
GOLF COURSE
PAST PARADISE ROAD ON RIGHT SIDE
OF HWY 154)
Hwy 154
FOOTHILL



MISSION
CANYON

STATE ST

HITCHCOCK

EARL
WARREN



MISSION
STAGING

GROUND
SUPPORT + FUEL
HITCHCOCK
STREET

HWY 101

MISSION

HITCHCOCK

FUEL

GROUND
SUPPORT

INSPECTION
REPAIR

LOS POSTERAS

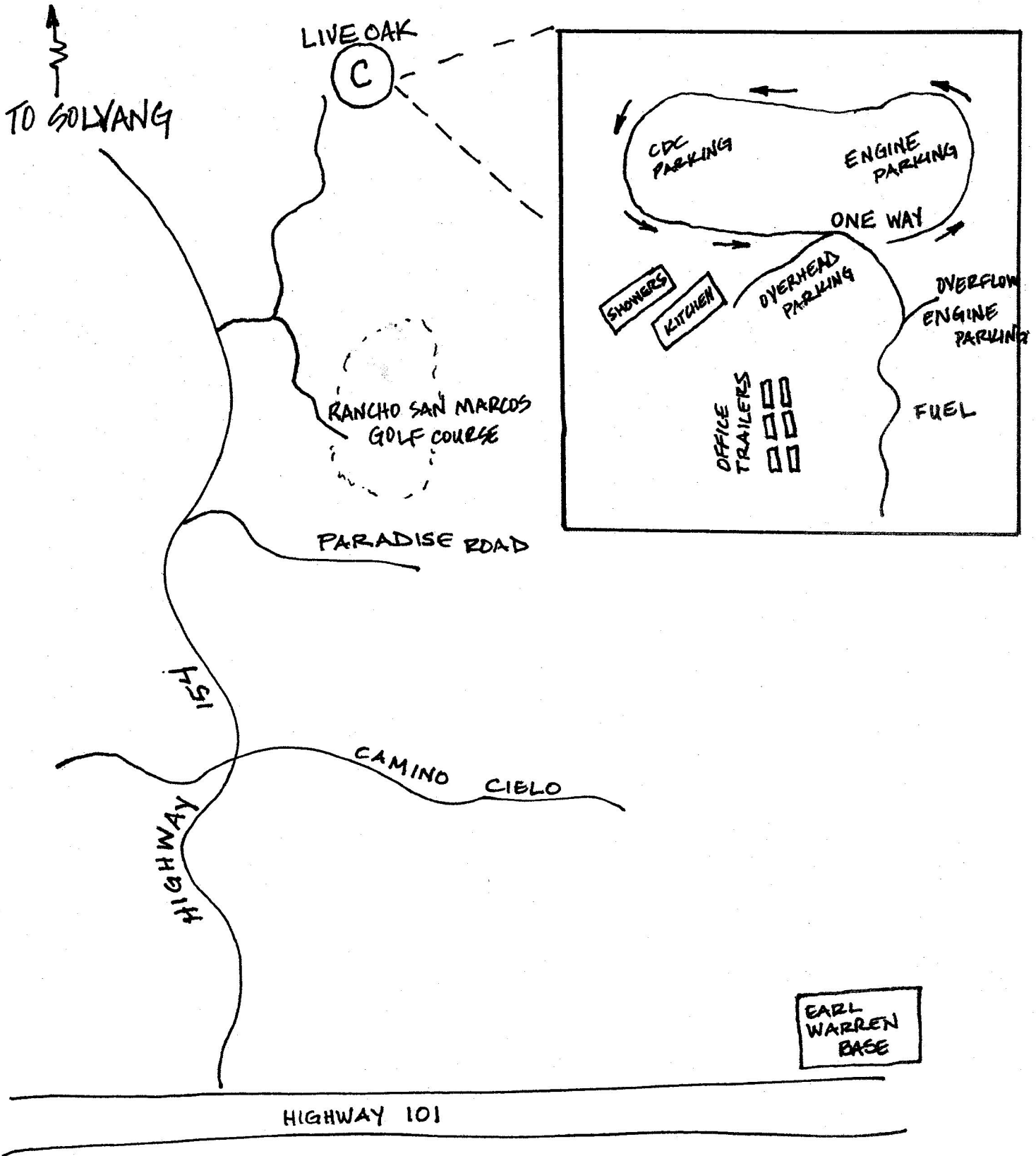


EUNGS
PARK

CALLE REAL

OCEAN

LIVE OAK CAMP



NOT TO SCALE

JESUSITA FIRELINE SUPPRESSION REPAIR SPECIFICATIONS

General Objectives:

- Minimize fireline sediment erosion
- Repair improvements damaged by suppression efforts

Instructions:

- Report any damages or needs to the Fire Line Suppression Repair Unit Leader using reporting form and debriefing daily after shift.
- Provide public with Board of Control claim forms or additional assistance if necessary.

Dozer Lines

1. Install waterbars and/or rolling dips per spacing below.

Road or Fire Line Gradient	Spacing
25% or Less	100 feet
25% to 50%	75 feet
50% or Greater	50 feet

2. Waterbars should be deep enough to significantly reduce the chance of being damaged and be constructed at an angle of approximately 45 degrees to the fire line.
3. Where dozer lines cannot be drained by installation of waterbars (due to steepness or dozer lines within swales), the equipment operator will tractor-pack woody vegetation into the surface to prevent erosion.
4. Alternate direction of waterbars in a herring bone pattern for dozer lines located on ridgelines.
5. Waterbars should be located to discharge into natural vegetation where possible. For waterbars located within 75 feet of a watercourse, install rocks at outlets and/or pack outlets with slash.
6. Remove berms where created during dozer line construction.
7. Reshape cross-slope control lines to as natural a contour as possible and remove lower berm.
8. Break apart dozer piles and spread out along dozer line.

Handlines

1. Install waterbars at the following spacing:

Fire Line Gradient	Spacing
30% or Less	100 feet
30% to 50%	75 feet
50% or Greater	50 feet

2. Fill in all under-slung trenches along cross slopes using material from the lower berm. Remove berms to allow flow of water along outsloped fireline.
3. Lop and scatter slash within 75 feet from a watercourse.
4. Where handlines cannot be drained by installation of waterbars due to steepness or where within swales, scatter slash along that portion of handline to prevent erosion.

Watercourse Crossings

1. Remove all displaced soil and debris from the stream channel
2. Slope back the approaches to prevent future stream bank failure.
3. Clean out culvert inlets and outlets as needed.

Fences and Gates

1. Repair fences cut or walked over during suppression efforts
2. Repair gates damaged by suppression efforts.

General Cleanup

1. Collect all trash such as plastic water bottles, cardboard, plastic flagging, foodstuffs, wrappers, blown hose, and plastic bags, and pack out.

DEMOBILIZATION PLAN - summarized
JESUSITA INCIDENT

I. RELEASE PRIORITIES

The following Release Priorities have been established by the Incident Commander in concert with the Jesusita ECC.

1. Local Government (other operational areas)
2. Out of state resources
3. Cooperating Agencies
4. Contract and private resources
5. Santa Barbara City Local Government
6. Santa Barbara County Local Government
7. CAL FIRE resources (prioritized by distance and travel time)
8. Los Padres National Forest resources

III. GENERAL GUIDELINES

- A. **NO RESOURCES WILL LEAVE UNTIL AUTHORIZED BY THE DEMOB UNIT.**
- B. Efforts will be made to ensure that all released personnel arrive home by 2200.
- C. Prior to leaving the Incident the Demob Unit will brief all Supervisors and Strike Team Leaders.
- D. Notification to incident personnel will be by posting surplus releases in advance.
- E. Actual departure times and ETA at destination will be relayed to Expanded Dispatch at time of departure.
- F. A Personal Protective Equipment (PPE) self -sign off (on the Demob 221 form) must be completed by all Cal Fire personnel. Crew Leaders, Strike Team and Task Force Leaders may sign for subordinates under their command. All incident personnel must be accounted for as having serviceable, agency compliant PPE. Defective items may be exchanged in supply.
- G. All Trainees will see the Training Tech Specialist prior to departure.
- H. Maximum driving duration for federal resources will not exceed 10 hours/person/day.

IV. RESPONSIBILITIES

Unit Leaders will declare resources excess to their Section Chief. Section Chiefs will declare *excess* resources to the Demob Unit. Include the date and time the resources will be surplus, their position on the incident and any transportation needs. **Use the General Message Form (ICS-213) or Team release form to list all surplus resources. Send to the RESOURCE UNIT.

V. RELEASE PROCEDURES

- A. **Functional Heads** (i.e. Section Chiefs and Unit leaders) are responsible for determining resources "Excess" to their needs and submitting the list to the Planning Section. This must be done 24 hours in advance of anticipated release in order to Notify South Ops of planned demobilization and to allow a proactive approach to reassignments or releases to the home units. The lists will provide the following information about the resource:
 1. Order/Request number
 2. Resource name or designator
 3. ETD
 4. Travel time (including rest and meals if necessary)
 5. Destination
 6. Availability for reassignment (if not available, provide valid reason)
 7. If flying, nearest Jetport and Social Security Number
- B. **RESL** will determine if there is a need at the incident that the Excess resource can fill. If no incident reassignments are necessary, the resource will be declared "Surplus" to the incident.
- C. **DMOB** will combine the approved surplus resource lists to create "Pending" resource lists to be submitted to the forest or agency dispatch for confirmation. DMOB will work with the resources and supply units so that the resource status board and resource orders can be kept up to date.
- D. When a resource status has been **confirmed** by dispatch and SOPS. DMOB will notify the resource so that check-out may begin.
- E. The Crew Leader or individual will take the Demobilization Check-out form to:
 - COML (to confirm that radio equipment is returned)
 - SUPL (to confirm all non-expendable property is returned)
 - GSUL (To inspect, clean and repair vehicles.)
 - TIML (to confirm all time reporting documents are complete)
 - DOCL (to hand in logs or ratings)
- F. DMOB will be the last stop in the release process and:
 - Sign-off, note date and time on the ICS-221
 - Confirm PPE self check off on ICS-221
 - Note any revisions to the ETD or ETA
 - Collect the ICS-221
- G. Resource is **released** and free to leave the incident



DIVISION / GROUP SUPERVISOR OPERATIONAL PERIOD - DEBRIEFING FORM



Incident Name: _____ Operational Period: _____

Branch: _____ Division/Group: _____ Div/Grp Supervisor Name: _____
 Cell #: _____ Vehicle Radio #: _____

Weather: _____
 Time: _____ Temp: _____ Humidity: _____ Fire Behav.: _____
 Wind: _____ Fuels: _____ Topog: _____ Natural Barriers: _____

Today

General Remarks / Accomplishments / Problem Areas:

Spot Fires: _____

Safety Concerns: _____

Water Sources: _____

Drop Points: _____

Division Breaks: _____

Helispots: _____

Values at Risk: _____

ACCOUNTABILITY		AGENCY Resources Committed to Division / Group						
Overhead	ENG	ENG S/T	CRW	CRW S/T	DOZ	DOZ S/T	W/T	Other

ACCOUNTABILITY		PRIVATE Resources Committed to Division / Group				
Kind	Req. #	Owner / ID	Operator	2nd Oper?	Type/Size	Remarks

Reminder: Complete Vendor Shift Tickets and Vendor Evaluations

Planning for Next Operational Period -This is due in prior to the 1600 Mtg

Next Operational Period: _____ thru _____ Division / Group: _____

Division / Group RESOURCES NEEDED for Next Operational Period

Engines (Type/#)		Crews (Type/#)		Dozers	Water Tenders	Tankers	Copters	Other Equipment	Overhead
<i>S/T</i>	<i>SR</i>	<i>S/T</i>	<i>SR</i>	<i>Type/#</i>	<i>Type/#</i>	<i>Type/#</i>	<i>Type/#</i>	<i>Kind/#</i>	<i>Kind/#</i>

**Division / Group Assignments -- Special Needs
Next Operational Period**

Work Assignments:

Special Needs:

Logistical Needs:

TOMORROW

Please Turn in this Form to Planning Section prior to 1600 hour meeting

Email:

Fax #:

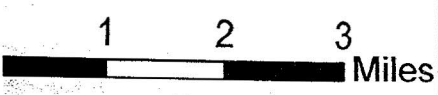
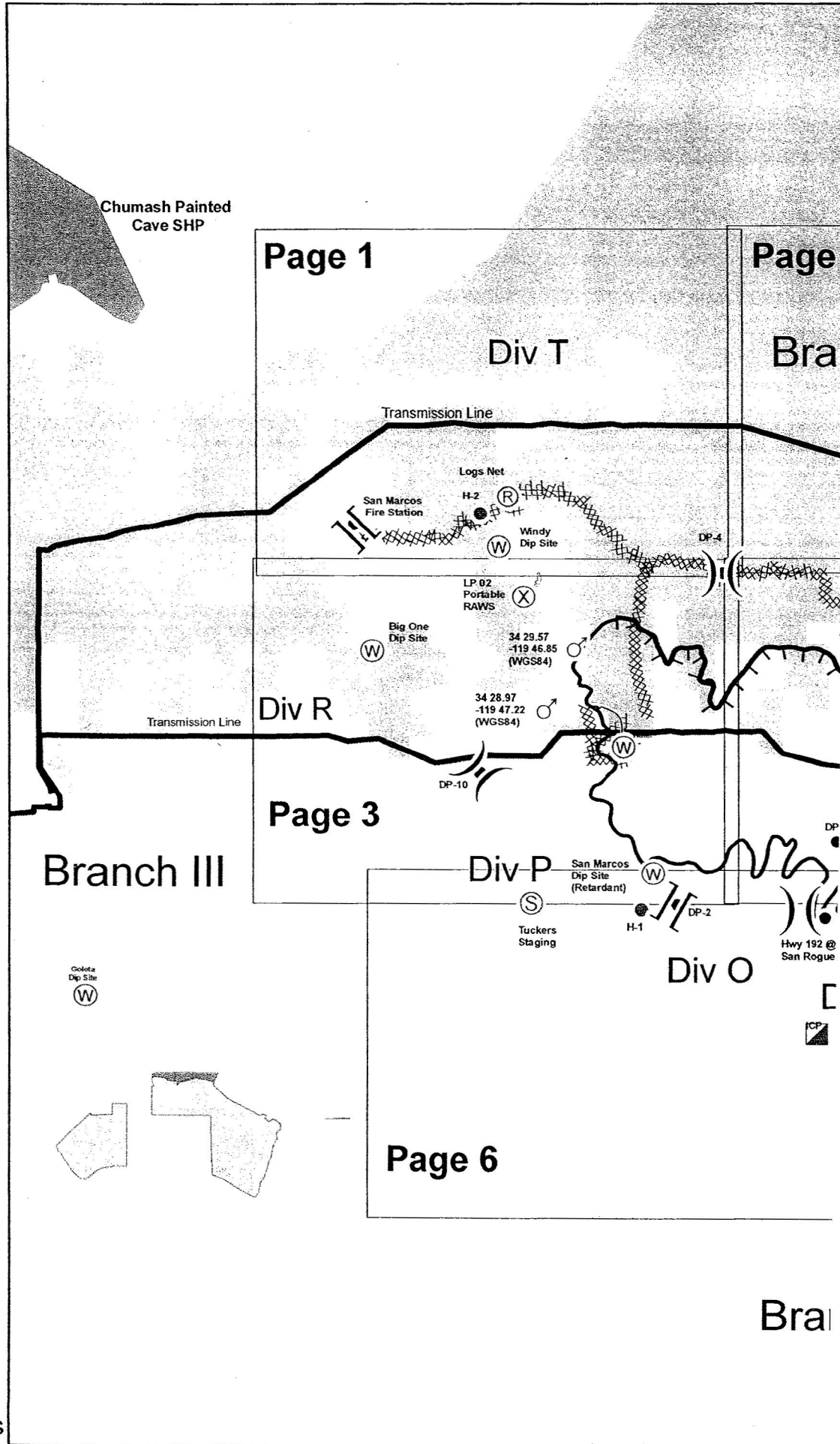
Phone :

Jesusita Fire
 CA LPF 001479
 May 11, 2009
 Index

Chumash Painted
 Cave SHP

Legend

- () Division
- [] Branch
- Drop Point
- Helispot
- ⊙ Staging Area
- ⊙ Water Source
- ⊙ Helibase
- ▣ Incident Command Post
- Ⓡ Repeater
- Ⓢ Fire Station
- Completed Line
- ▬ Uncontrolled Fire Edge
- ▨ Completed Dozer Line
- ⊗ Proposed Dozer Line
- - - Planned Fire Line
- Planned Secondary Line
- ▨ USDA Forest Service



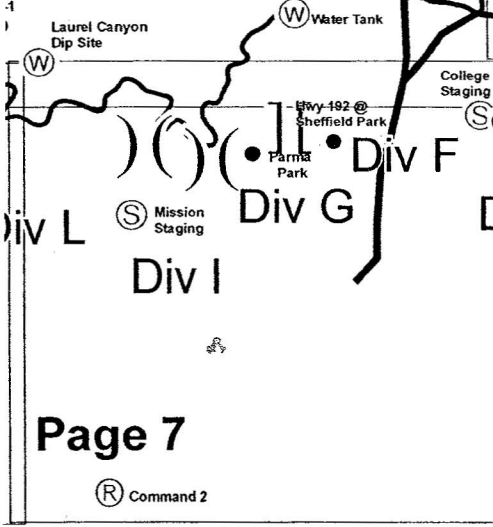
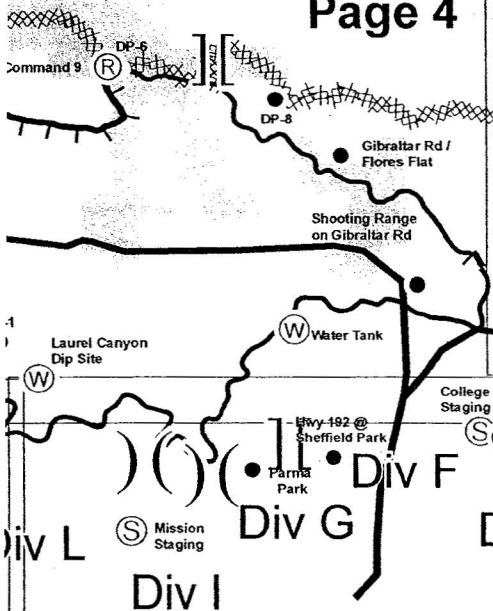
2
Branch IV
Div Z

Branch I

Page 5

Page 4

Div A



Page 7

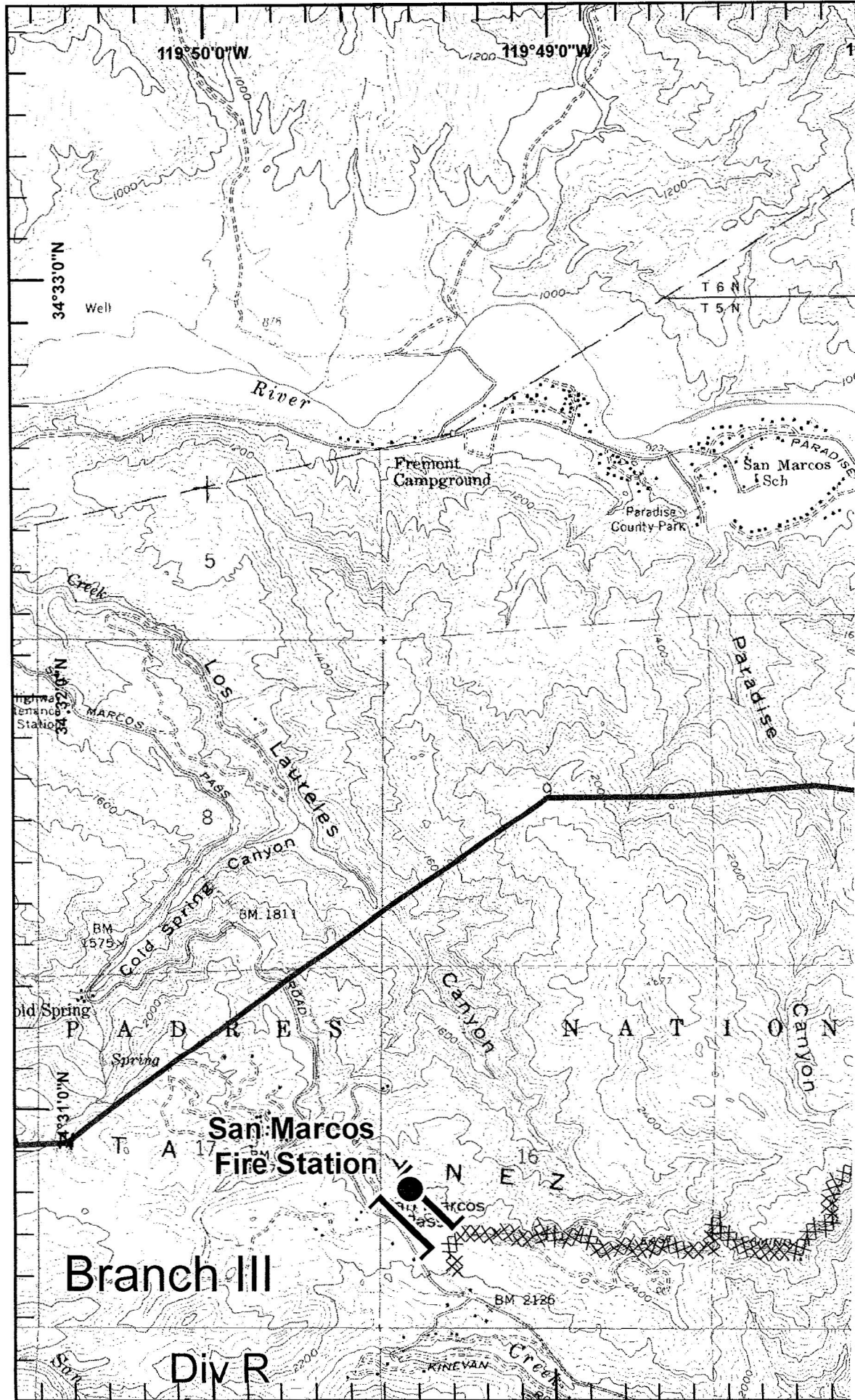
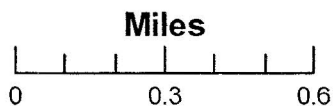
Div C

Page 8

Branch II

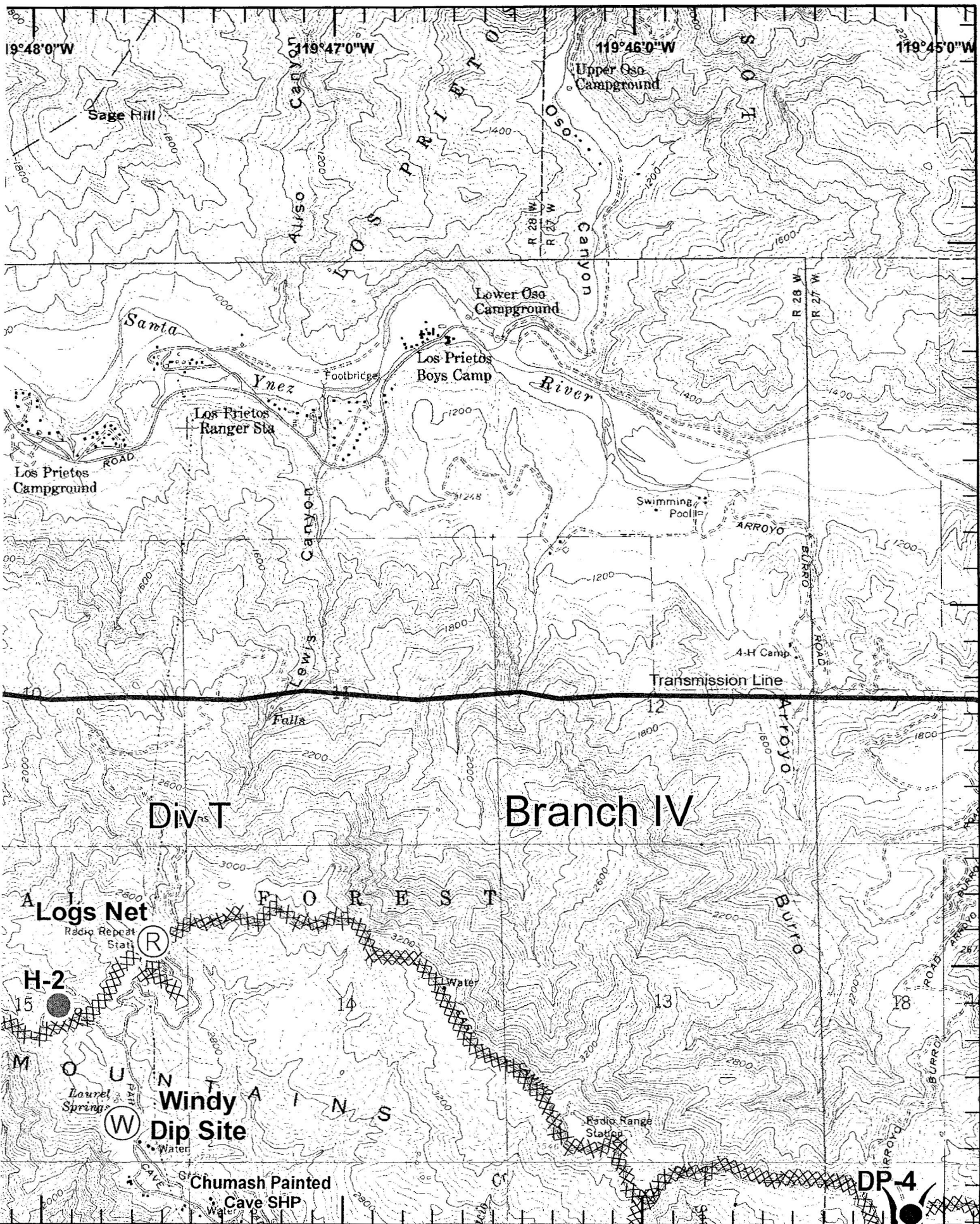
Legend

- () Division
- [] Branch
- Drop Point
- Helispot
- ⊙ Staging Area
- ⊙ Water Source
- ⊙ Helibase
- ▣ Incident Command Post
- Ⓜ Repeater
- Ⓧ Fire Station
- Completed Line
- Uncontrolled Fire Edge
- XXXXX Completed Dozer Line
- X•• Proposed Dozer Line
- - - Planned Fire Line
- Planned Secondary Line



Branch III

Div R



Div^{rs} T

Branch IV

Logs Net

H-2

Windy Dip Site

Chumash Painted Cave SHP

DP-4

Sage Hill

Upper Oso Campground

Lower Oso Campground

Los Prietos Boys Camp

Los Prietos Ranger Sta

Los Prietos Campground

Swimming Pool

4-H Camp

Transmission Line

Falls

LAUREL MOUNTAINS

LOS PRIETOS FOREST

ARROYO BUFO

LAUREL MOUNTAINS

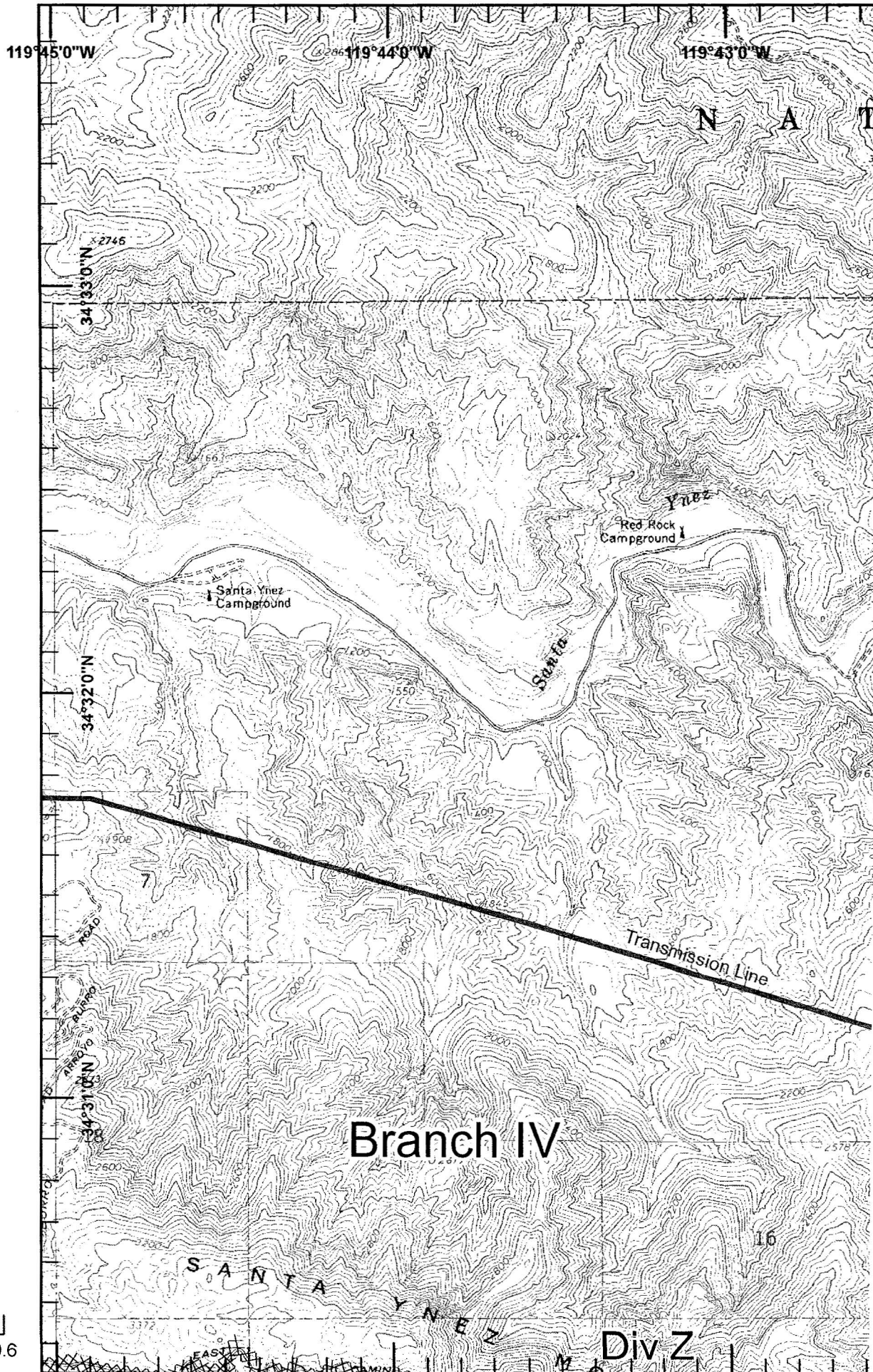
WINDY MOUNTAINS

RADIO RANGE STATION

LAUREL MOUNTAINS

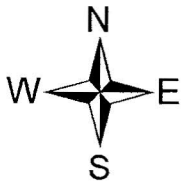
CHUMASH PAINTED CAVE

DP-4

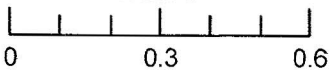


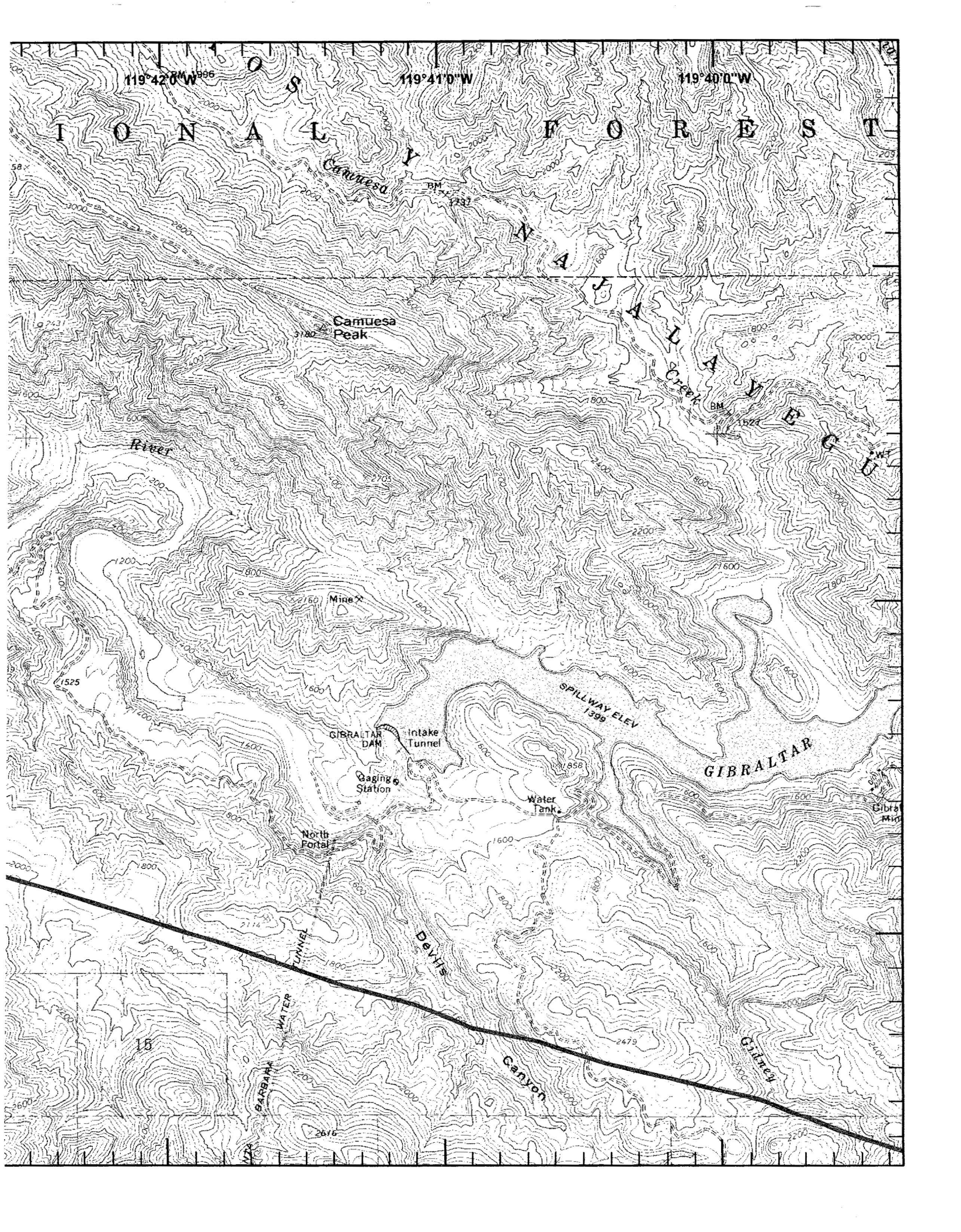
Legend

- () Division
- [] Branch
- Drop Point
- Helispot
- ⊙ Staging Area
- ⊙ Water Source
- ⊙ Helibase
- ▣ Incident Command Post
- Ⓜ Repeater
- Ⓧ Fire Station
- Completed Line
- ▬ Uncontrolled Fire Edge
- ▨ Completed Dozer Line
- ⊗ Proposed Dozer Line
- - - Planned Fire Line
- ⋯ Planned Secondary Line



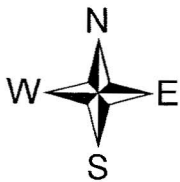
Miles



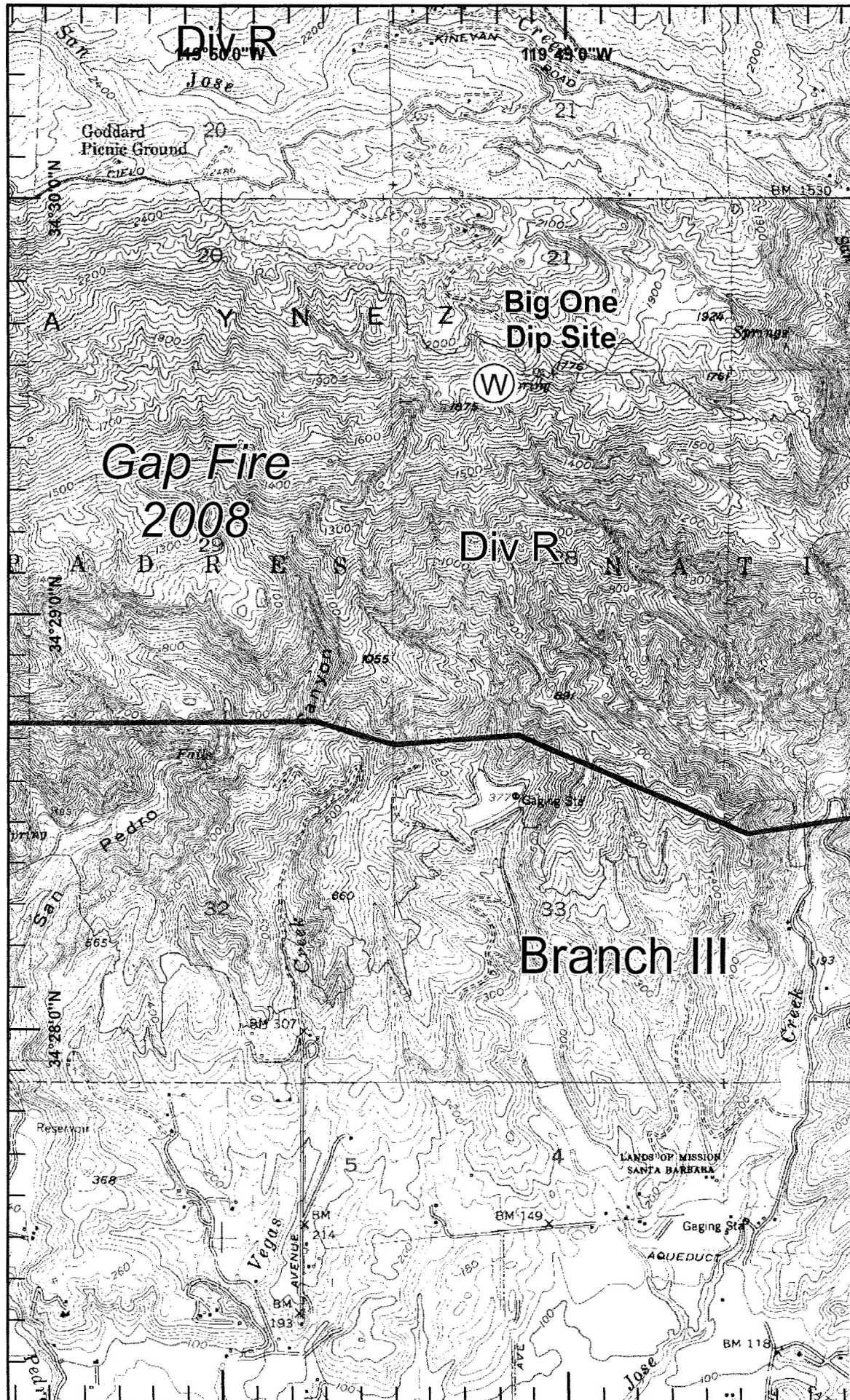
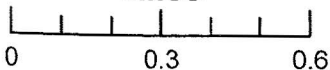


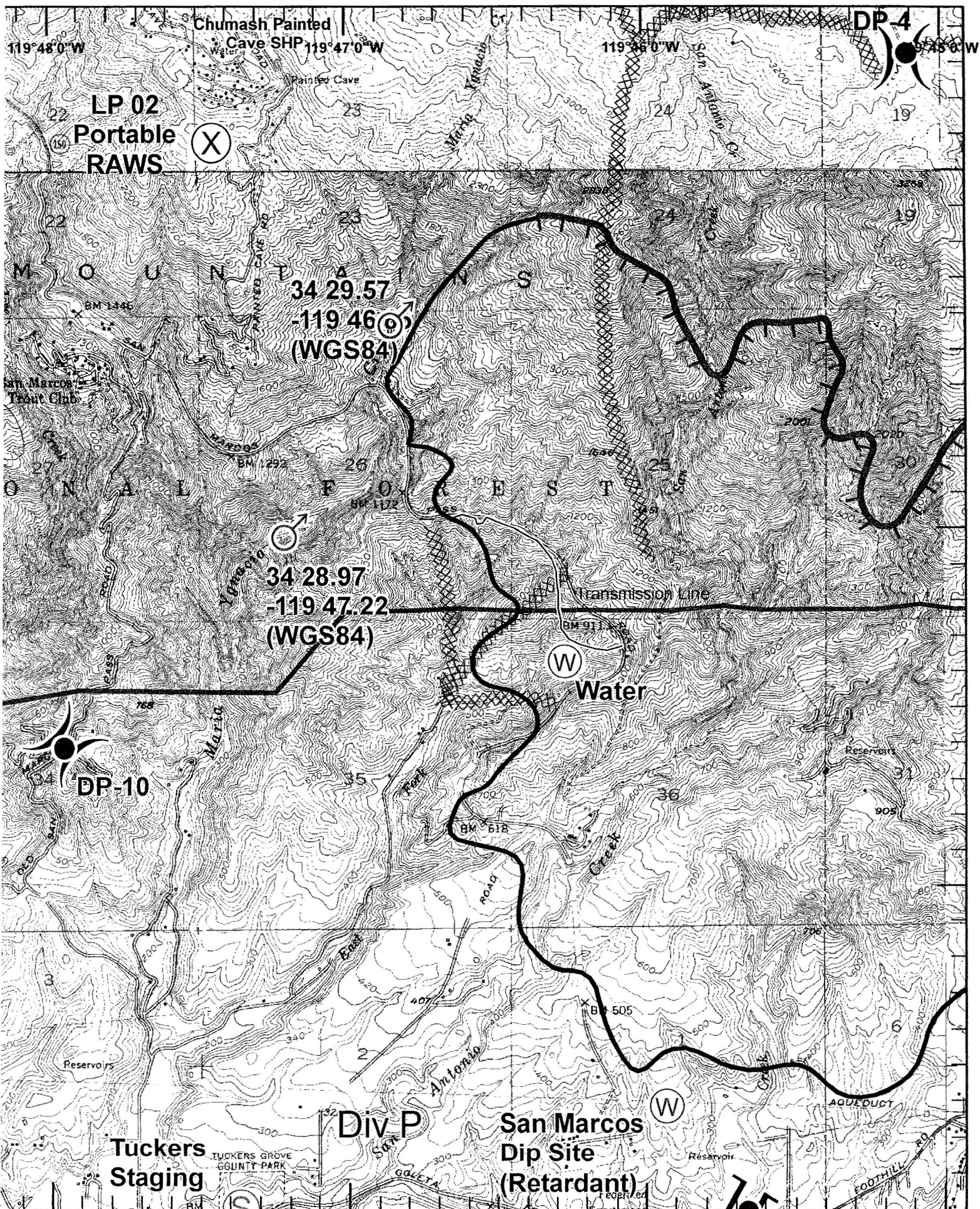
Legend

- () Division
- [] Branch
- Drop Point
- Helispot
- ⊙ Staging Area
- ⊙ Water Source
- ⊙ Helibase
- ▣ Incident Command Post
- Ⓜ Repeater
- Ⓜ Fire Station
- Completed Line
- Uncontrolled Fire Edge
- ⊗ Completed Dozer Line
- ⊗ Proposed Dozer Line
- - - Planned Fire Line
- Planned Secondary Line



Miles





Chumash Painted Cave SHP 119°47'0"W

DP-4 119°45'0"W

LP 02 Portable RAWs (X)

34 29.57
-119 46 (WGS84)

34 28.97
-119 47.22 (WGS84)

Transmission Line

Water (W)

DP-10

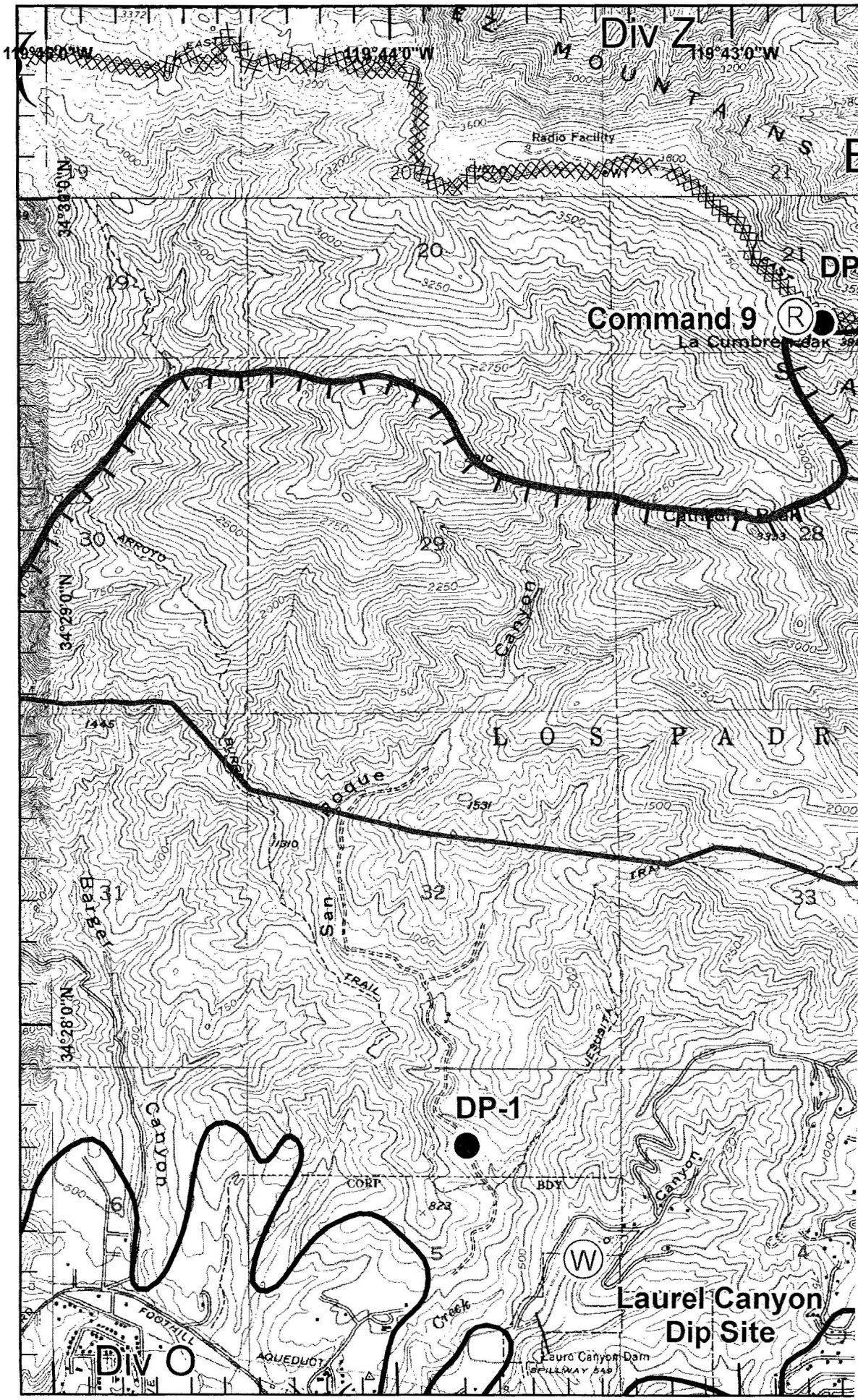
Div P

San Marcos Dip Site (Retardant) (W)

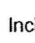
Tuckers Staging TUCKERS GROVE COUNTY PARK

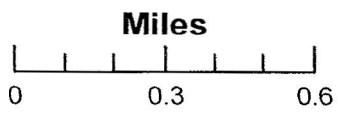
AQUEDUCT

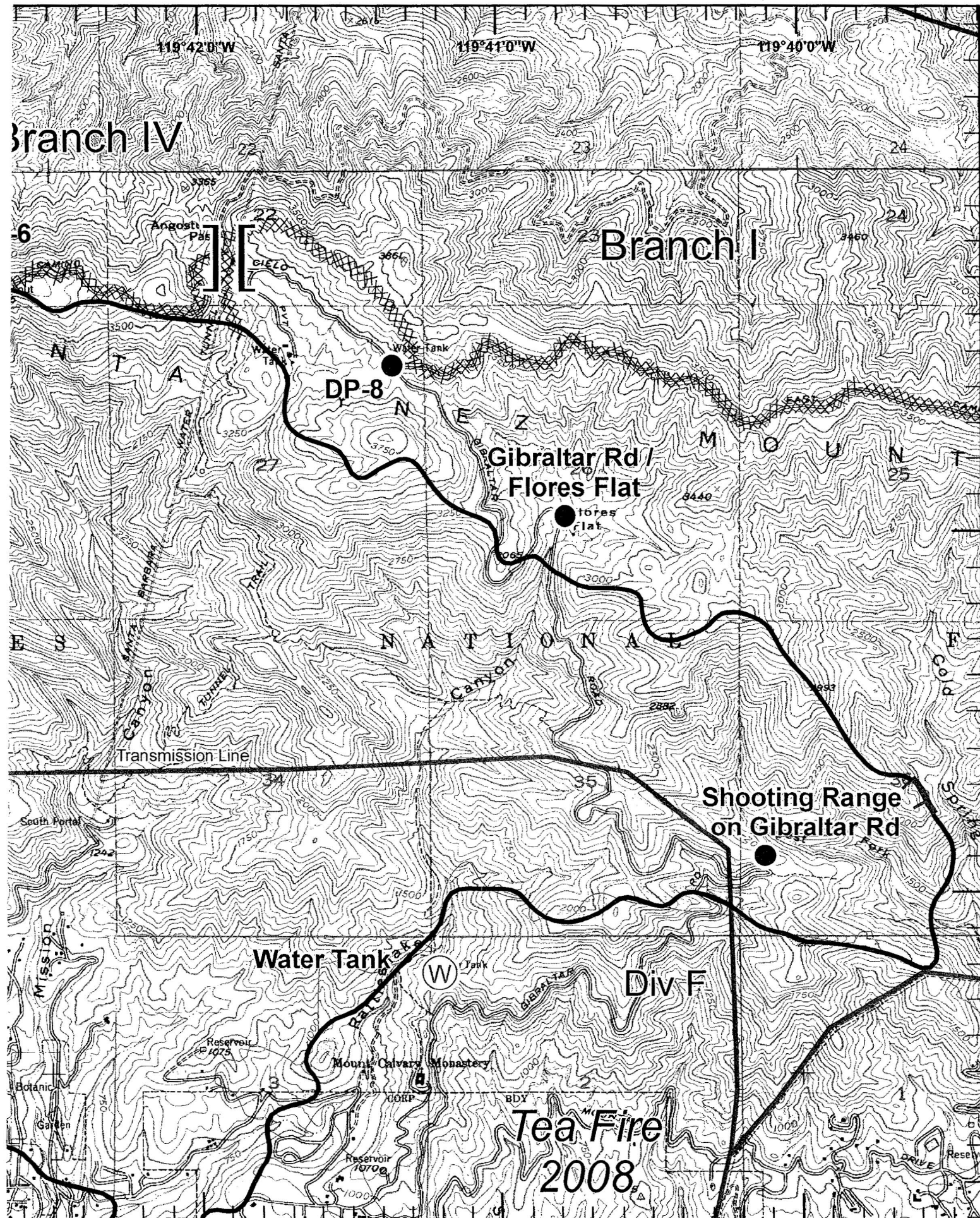
FOOTHILL RD



Legend

-  Division
-  Branch
-  Drop Point
-  Helispot
-  Staging Area
-  Water Source
-  Helibase
-  Incident Command Post
-  Repeater
-  Fire Station
-  Completed Line
-  Uncontrolled Fire Edge
-  Completed Dozer Line
-  Proposed Dozer Line
-  Planned Fire Line
-  Planned Secondary Line





Branch IV

Branch I

DP-8

Gibraltar Rd /
Flores Flat

Shooting Range
on Gibraltar Rd

Water Tank

Div F

Tea Fire
2008

119°42'0"W

119°41'0"W

119°40'0"W

6

24

24

24

24

24

24

24

24

24

24

24

24

24

24

24

24

24

N T A

N E Z

M O U N T

25

E S

N A T I O N A L E

C O L D

P L O C K

S O U T H

P L A T E A U

South Portal

Mission

Botanic

Garden

Reserv

Transmission Line

Canyon

W

BDY

U

1

1

1

1242

1250

1075

1000

1000

1242

1250

1075

1000

1000

1242

1250

1075

1000

1000

1242

1250

1075

1000

1000

1242

1250

1075

1000

1000

1242

1250

1075

1000

1000

1242

1250

1075

1000

1000

1242

1250

1075

1000

1000

1242

1250

1075

1000

1000

1242

1250

1075

1000

1000

1242

1250

1075

1000

1000

1242

1250

1075

1000

1000

1242

1250

1075

1000

1000

1242

1250

1075

1000

1000

1242

1250

1075

1000

1000

1242

1250

1075

1000

1000

1242

1250

1075

1000

1000

1242

1250

1075

1000

1000

1242

1250

1075

1000

1000

1242

1250

1075

1000

1000

1242

1250

1075

1000

1000

1242

1250

1075

1000

1000

1242

1250

1075

1000

1000

1242

1250

1075

1000

1000

1242

1250

1075

1000

1000

1242

1250

1075

1000

1000

1242

1250

1075

1000

1000

1242

1250

1075

1000

1000

1242

1250

1075

1000

1000

1242

1250

1075

1000

1000

1242

1250

1075

1000

1000

1242

1250

1075

1000

1000

1242

1250

1075

1000

1000

1242

1250

1075

1000

1000

1242

1250

1075

1000

1000

1242

1250

1075

1000

1000

1242

1250

1075

1000

1000

1242

1250

1075

1000

1000

1242

1250

1075

1000

1000

1242

1250

1075

1000

1000

1242

1250

1075

1000

1000

1242

1250

1075

1000

1000

1242

1250

1075

1000

1000

1242

1250

1075

1000

1000

1242

1250

1075

1000

1000

1242

1250

1075

1000

1000

1242

1250

1075

1000

1000

1242

1250

1075

1000

1000

1242

1250

1075

1000

1000

1242

1250

1075

1000

1000

1242

1250

1075

1000

1000

1242

1250

1075

1000

1000

1242

1250

1075

1000

1000

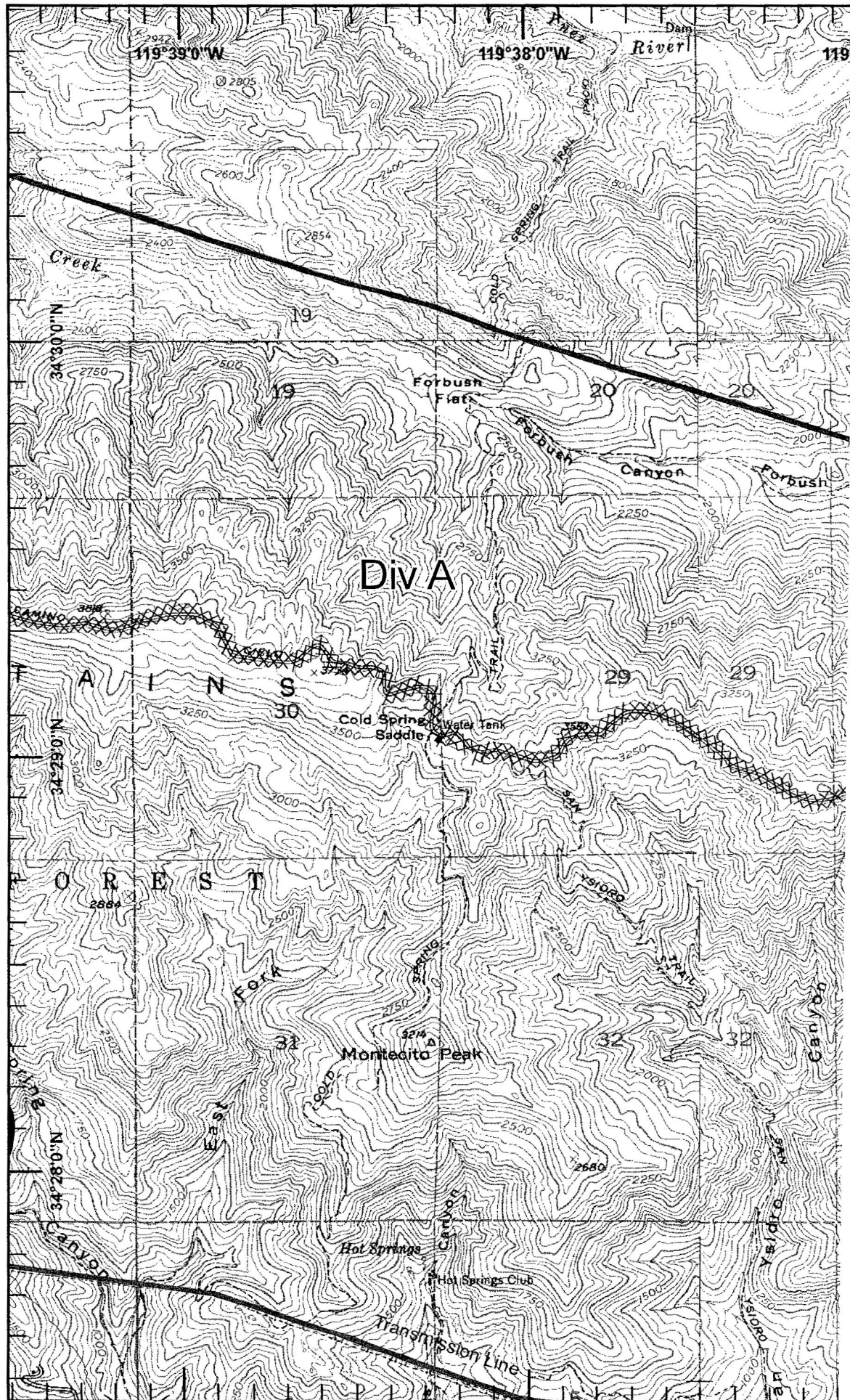
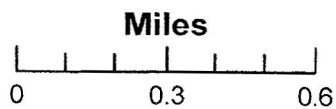
1242

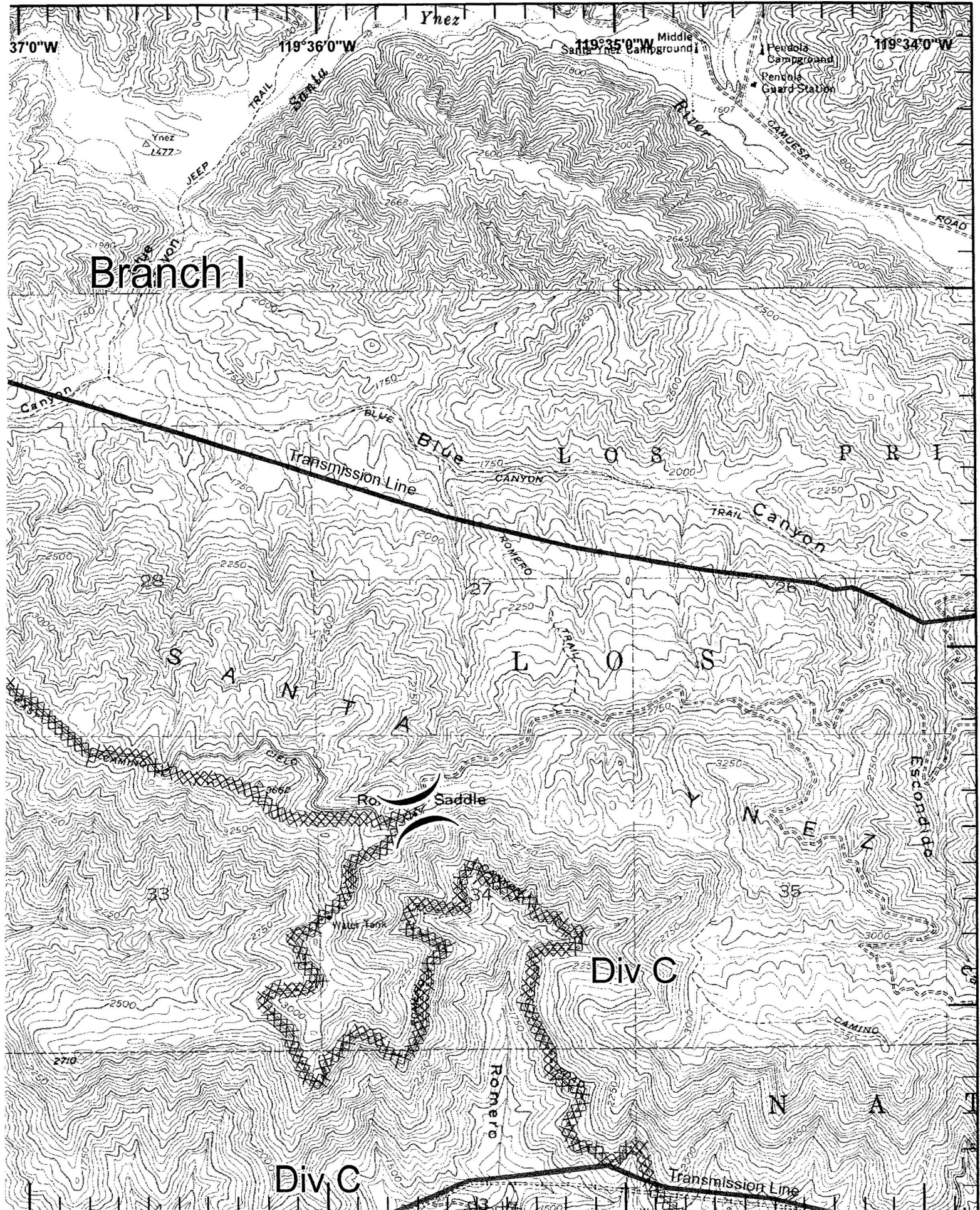
1250

Jesunita Fire
CA LPF 001479
May 11, 2009
NAD 27
Page 5

Legend

- () Division
- [] Branch
- Drop Point
- Helispot
- ⊙ Staging Area
- ⊙ Water Source
- ⊙ Helibase
- ▣ Incident Command Post
- Ⓡ Repeater
- Ⓢ Fire Station
- Completed Line
- Uncontrolled Fire Edge
- XXXXX Completed Dozer Line
- X• Proposed Dozer Line
- - - Planned Fire Line
- Planned Secondary Line





Branch I

Div C

Div C

SANTA YNEZ NATIONAL ANTIQUITIES MONUMENT

BLUE CANYON

SANTA YNEZ NATIONAL ANTIQUITIES MONUMENT

ROMERO SADDLE

ROMERO TRAIL

Escondido

DAMING

Transmission Line

Transmission Line

37°0'W

119°36'0"W

119°35'0"W

119°34'0"W

Ynez 1477

Middle Santa Ynez Campground

Pendola Campground
Pendola Guard Station

JEEP TRAIL

SANTA YNEZ RIVER

RIVER

DAMING

ROAD

CANYON

BLUE

TRAIL

TRAIL

CANYON

SANTA

YNEZ

NATIONAL ANTIQUITIES MONUMENT

ROMERO

SADDLE

33

34

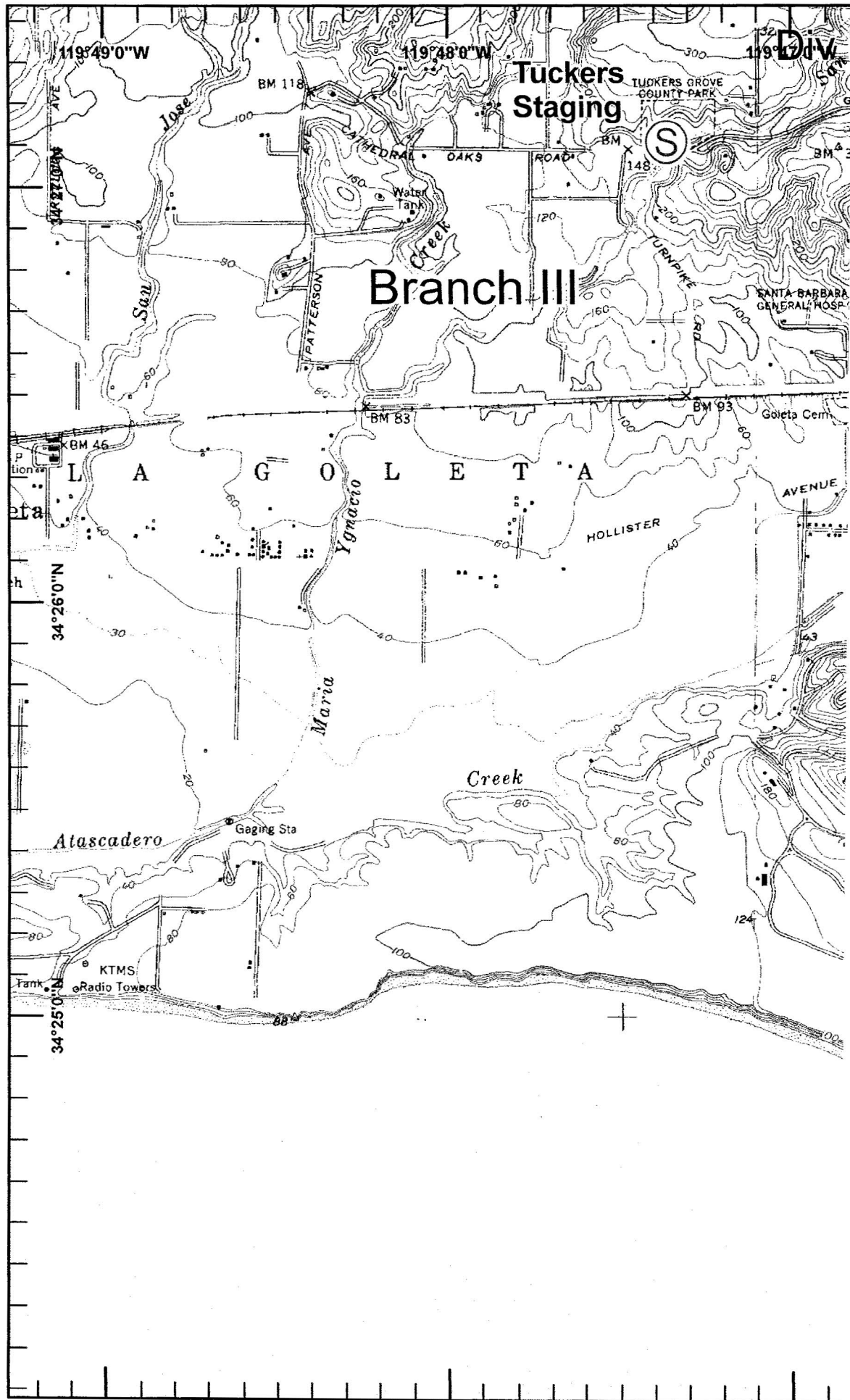
35

Water Tank

27°0'

33

NATIONAL ANTIQUITIES MONUMENT

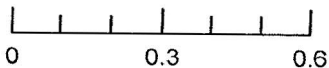


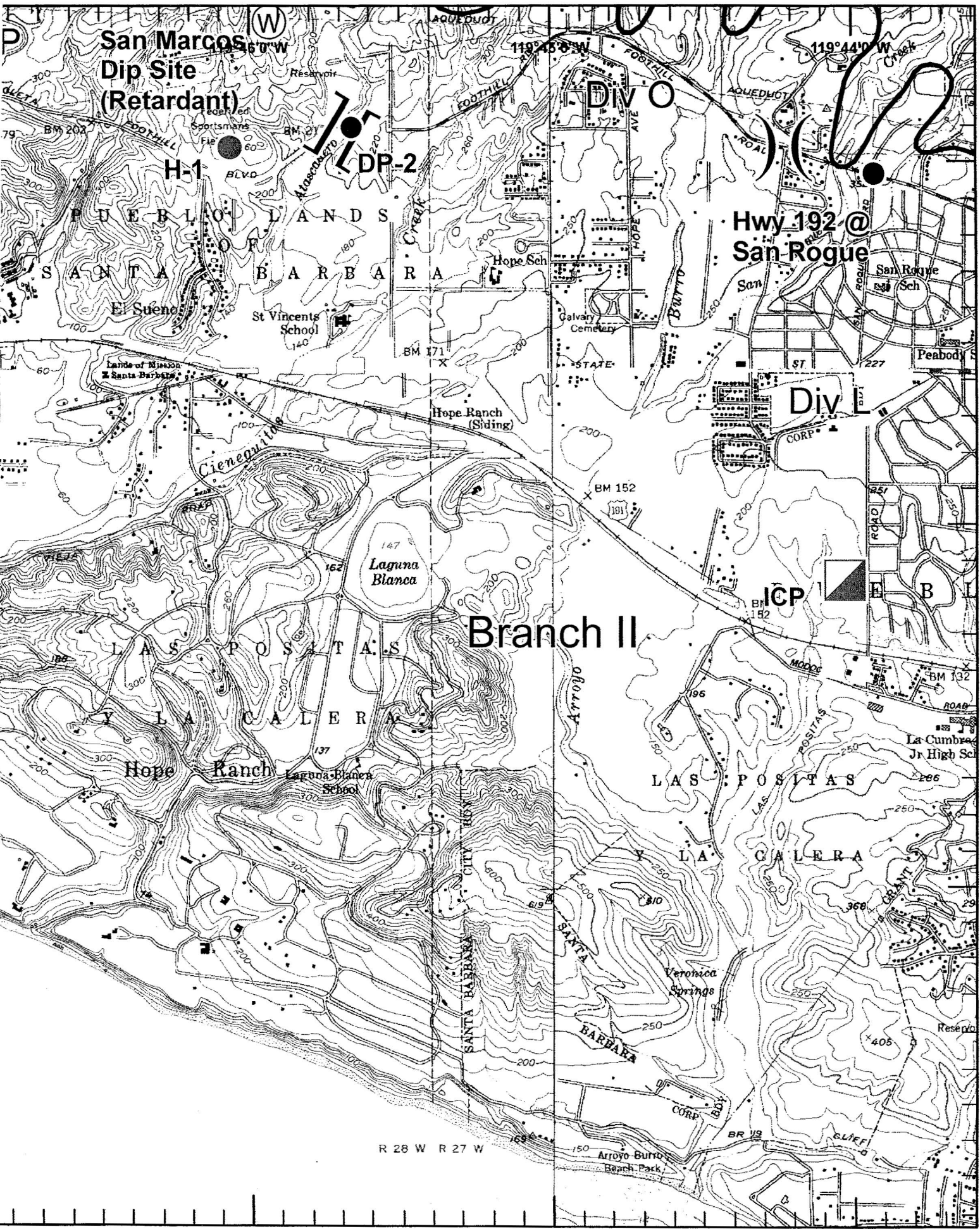
Legend

- () Division
- [] Branch
- Drop Point
- Helispot
- (S) Staging Area
- (W) Water Source
- (H) Helibase
- ▣ Incident Command Post
- (R) Repeater
- (F) Fire Station
- Completed Line
- Uncontrolled Fire Edge
- XXXXX Completed Dozer Line
- X • Proposed Dozer Line
- - - Planned Fire Line
- Planned Secondary Line



Miles





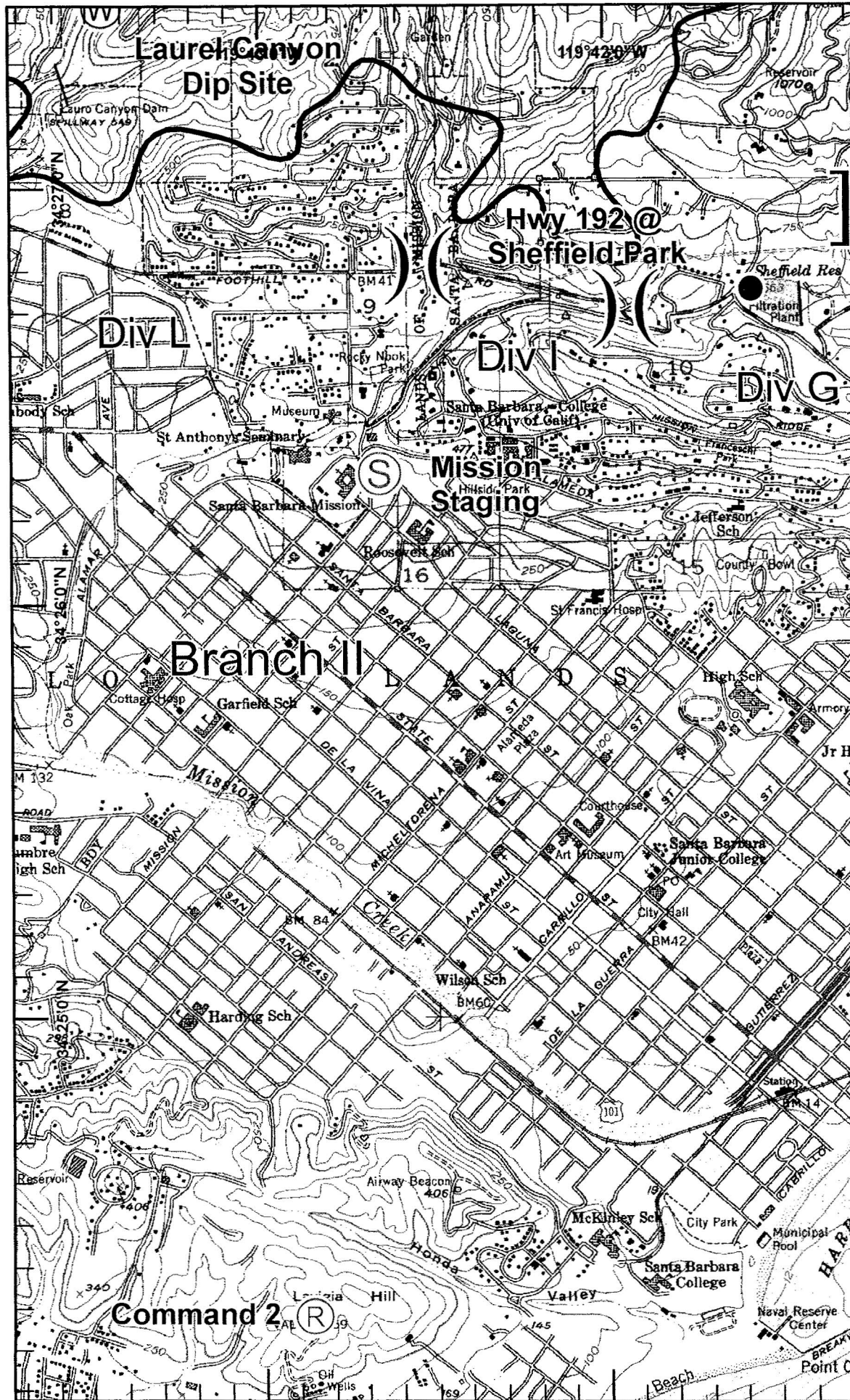
San Marcos
Dip Site
(Retardant)

DP-2

Hwy 192 @
San Rogue

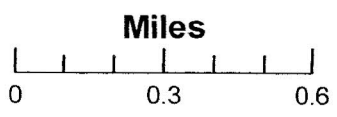
Branch II

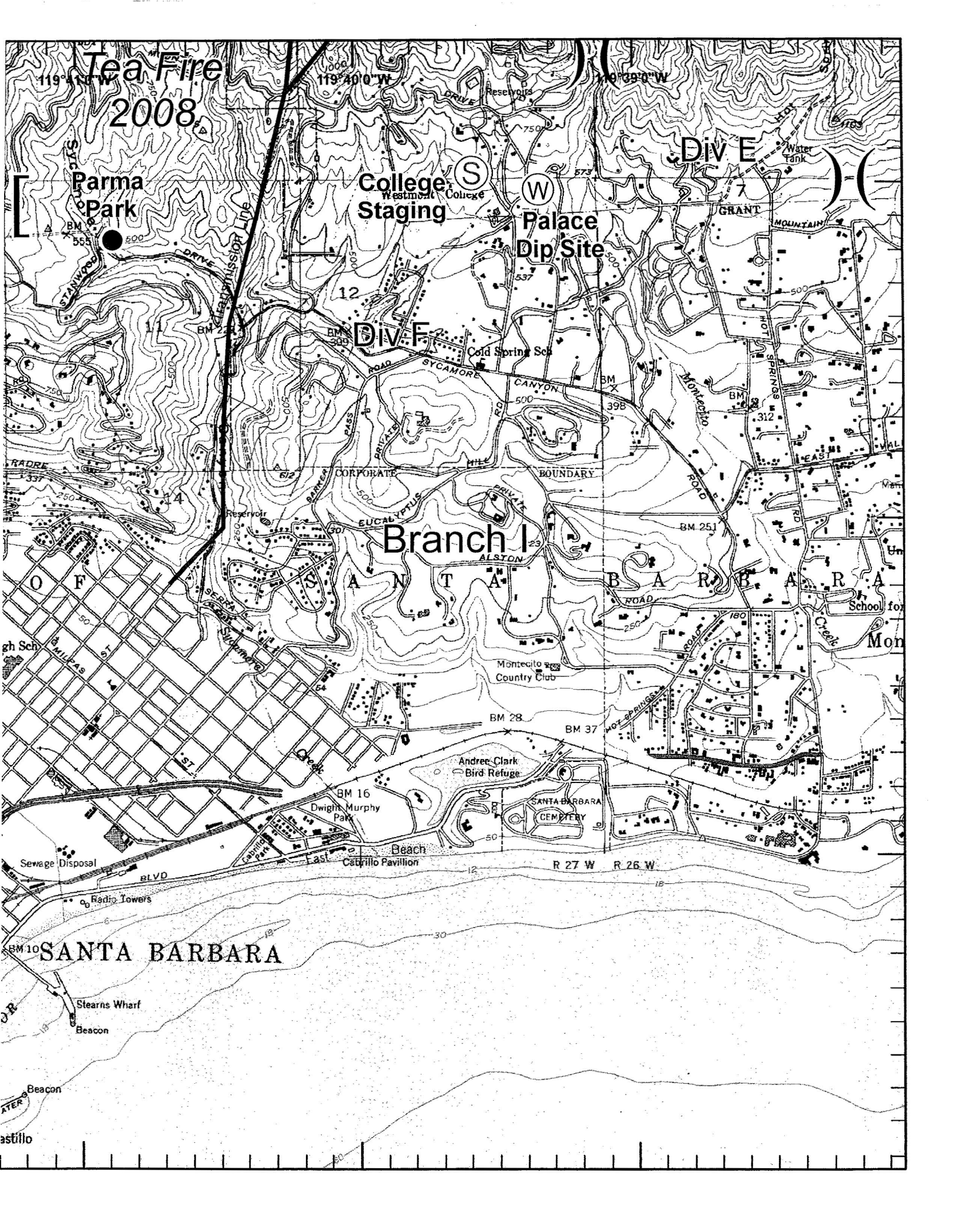
R 28 W R 27 W



Legend

- () Division
- [] Branch
- Drop Point
- Helispot
- ⊙ Staging Area
- ⊙ Water Source
- ⊙ Helibase
- ▣ Incident Command Post
- Ⓡ Repeater
- Ⓢ Fire Station
- Completed Line
- ▬ Uncontrolled Fire Edge
- ▬ Completed Dozer Line
- ×• Proposed Dozer Line
- - Planned Fire Line
- Planned Secondary Line





Tea Fire
2008

Parma
Park

College
Staging

Palace
Dip Site

DIV F

DIV E

Branch I

SANTA BARBARA

Legend

- () Division
- [] Branch
- Drop Point
- Helispot
- ⊙ Staging Area
- ⊙ Water Source
- ⊙ Helibase
- ▣ Incident Command Post
- Ⓡ Repeater
- Ⓢ Fire Station
- Completed Line
- Uncontrolled Fire Edge
- ×××× Completed Dozer Line
- ×• Proposed Dozer Line
- - - Planned Fire Line
- Planned Secondary Line

