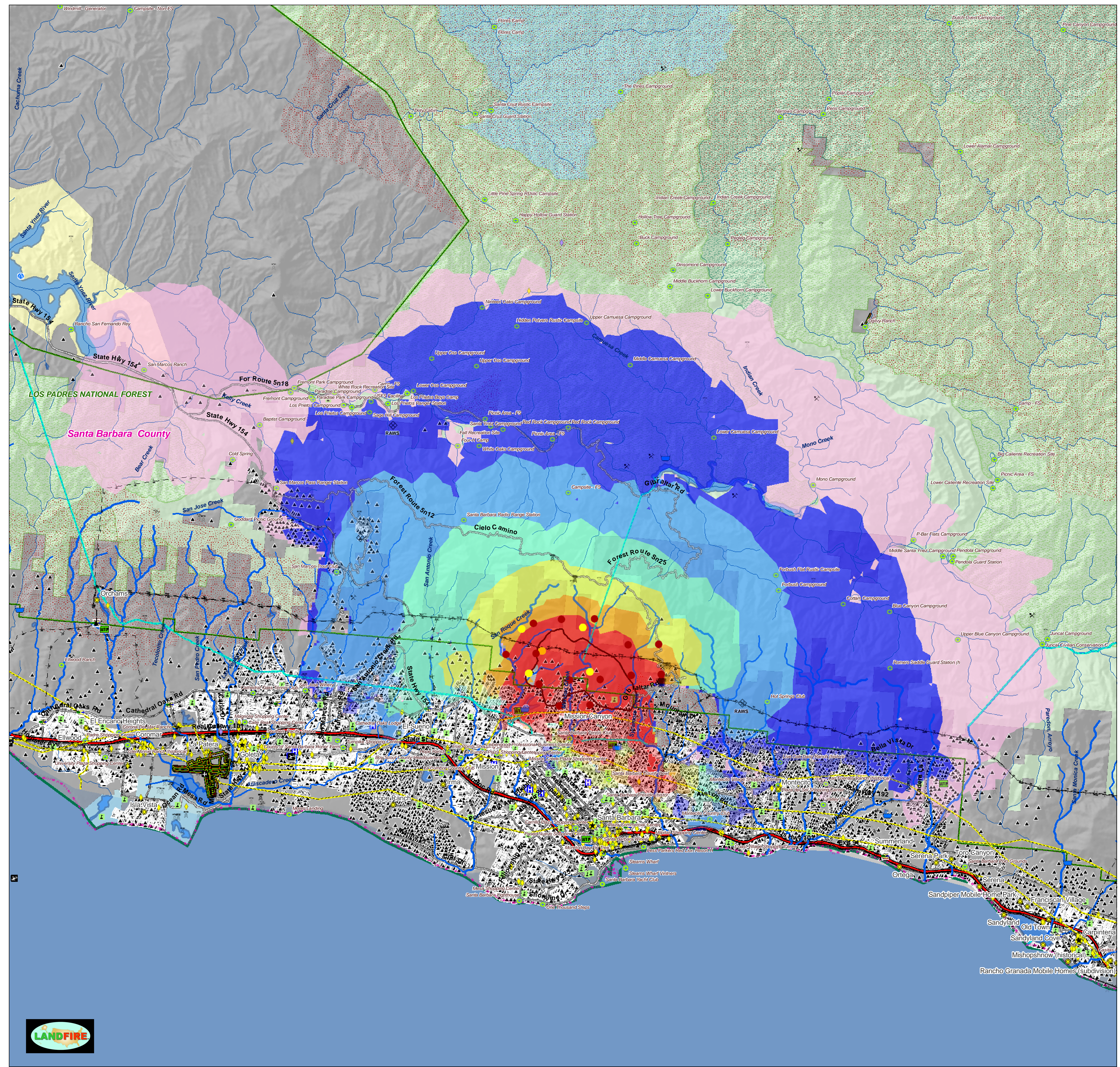




7 May 2009 CI\_A\_090507\_jr  
ICS-209 Incident Number: CA-LPF-1479  
this map is not complete without companion report

## Major Values-at-Risk per FSPRO Fire Spread Probabilities: 7 days as of 7 May 2009

- FSPRO Fire Perimeter
- MODIS Points**
- ! 7 May
- ! 6 May
- ! Previous 6 Days
- ! Past Fires 2000-2008
- FSPRO Fire Spread Probabilities**
- > 80 %
- 60 - 80 %
- 40 - 60 %
- 20 - 40 %
- 5 - 20 %
- 1 - 5 %
- < 1 %
- # Building Clusters: Santa Barbara County\*
- \* RAWs Stations
- W Water: Dams > 100af
- W Water Supply: Intakes
- W Water Treatment Plants
- W Water Pipeline - Aqueduct - Canal
- Powerlines
- D Power Plants
- P Power or Pumping Substation
- X Communication Towers
- Oil & Gas Transmission Lines
- ✈ Airport
- ✈ Heliport
- Airport Runways
- V Hospitals
- h Schools
- B HAZMAT: Mines
- W HAZMAT: Superfund Sites
- W HAZMAT: Hazardous Waste
- Other Landmarks
- Interstates
- Major Roads
- Railways
- Class 1 Air-sheds
- County Boundary
- National Forest Boundaries
- Jurisdiction**
- Private
- State
- BLM
- BOR
- USFS
- Inventoried Roadless
- Designated Wilderness
- Primitive RNA
- Wild-Scenic-Rec Rivers



\* Building cluster points approximate the location of one or more structures. Most building cluster points represent the center of parcels where county assessor records indicate taxable improvements are present, but may also represent structure point locations identified by county officials. Location accuracy of cluster points decreases with large parcel areas.

NOTE: Recreation residences and special use structures data are not available from USFS and are not included in building cluster points data, nor are they identified or analyzed in this report.

NOTE: Mines may pose a threat to fire fighter safety.

CAUTION: Defer to air photos or local knowledge for exact structure and other feature locations. Building cluster points are intended for STRATEGIC USE ONLY.

