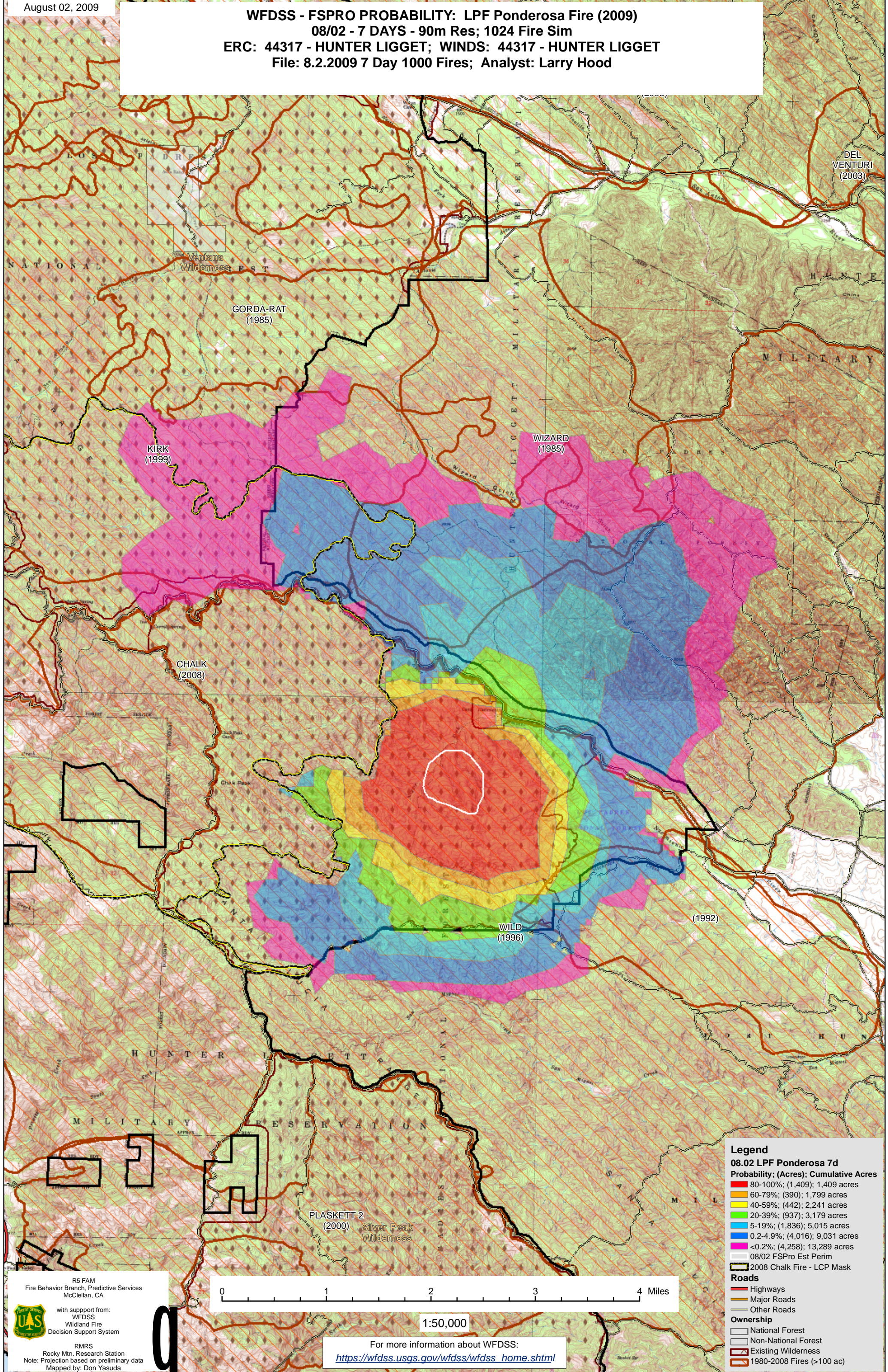


WFDSS - FSPRO PROBABILITY: LPF Ponderosa Fire (2009)
08/02 - 7 DAYS - 90m Res; 1024 Fire Sim
ERC: 44317 - HUNTER LIGGET; WINDS: 44317 - HUNTER LIGGET
File: 8.2.2009 7 Day 1000 Fires; Analyst: Larry Hood



Legend

08.02 LPF Ponderosa 7d
Probability; (Acres); Cumulative Acres

- 80-100%; (1,409); 1,409 acres
- 60-79%; (390); 1,799 acres
- 40-59%; (442); 2,241 acres
- 20-39%; (937); 3,179 acres
- 5-19%; (1,836); 5,015 acres
- 0.2-4.9%; (4,016); 9,031 acres
- <0.2%; (4,258); 13,289 acres

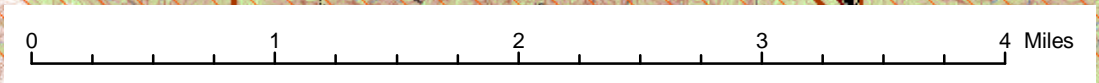
- 08/02 FSPRO Est Perim
- 2008 Chalk Fire - LCP Mask

Roads

- Highways
- Major Roads
- Other Roads

Ownership

- National Forest
- Non-National Forest
- Existing Wilderness
- 1980-2008 Fires (>100 ac)



1:50,000

R5 FAM
Fire Behavior Branch, Predictive Services
McClellan, CA

with support from:
WFDSS
Wildland Fire
Decision Support System

RMRS
Rocky Mtn. Research Station
Note: Projection based on preliminary data
Mapped by: Don Yasuda

For more information about WFDSS:
https://wfdss.usgs.gov/wfdss/wfdss_home.shtml