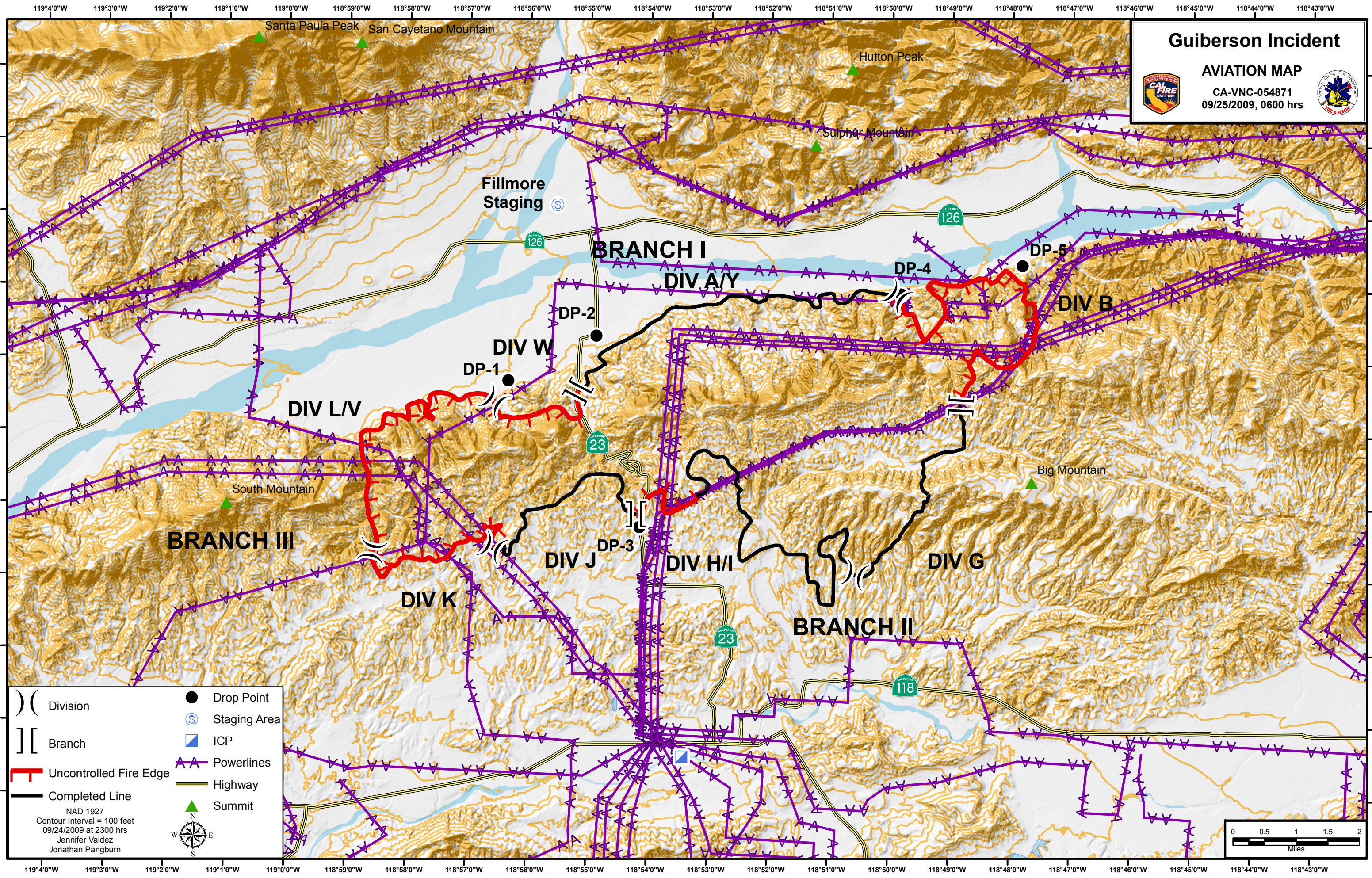


Guiberson Incident

AVIATION MAP

CA-VNC-054871
09/25/2009, 0600 hrs



	Division		Drop Point
	Branch		Staging Area
	Uncontrolled Fire Edge		ICP
	Completed Line		Powerlines
			Highway
			Summit

NAD 1927
Contour Interval = 100 feet
09/24/2009 at 2300 hrs
Jennifer Valdez
Jonathan Pangburn

