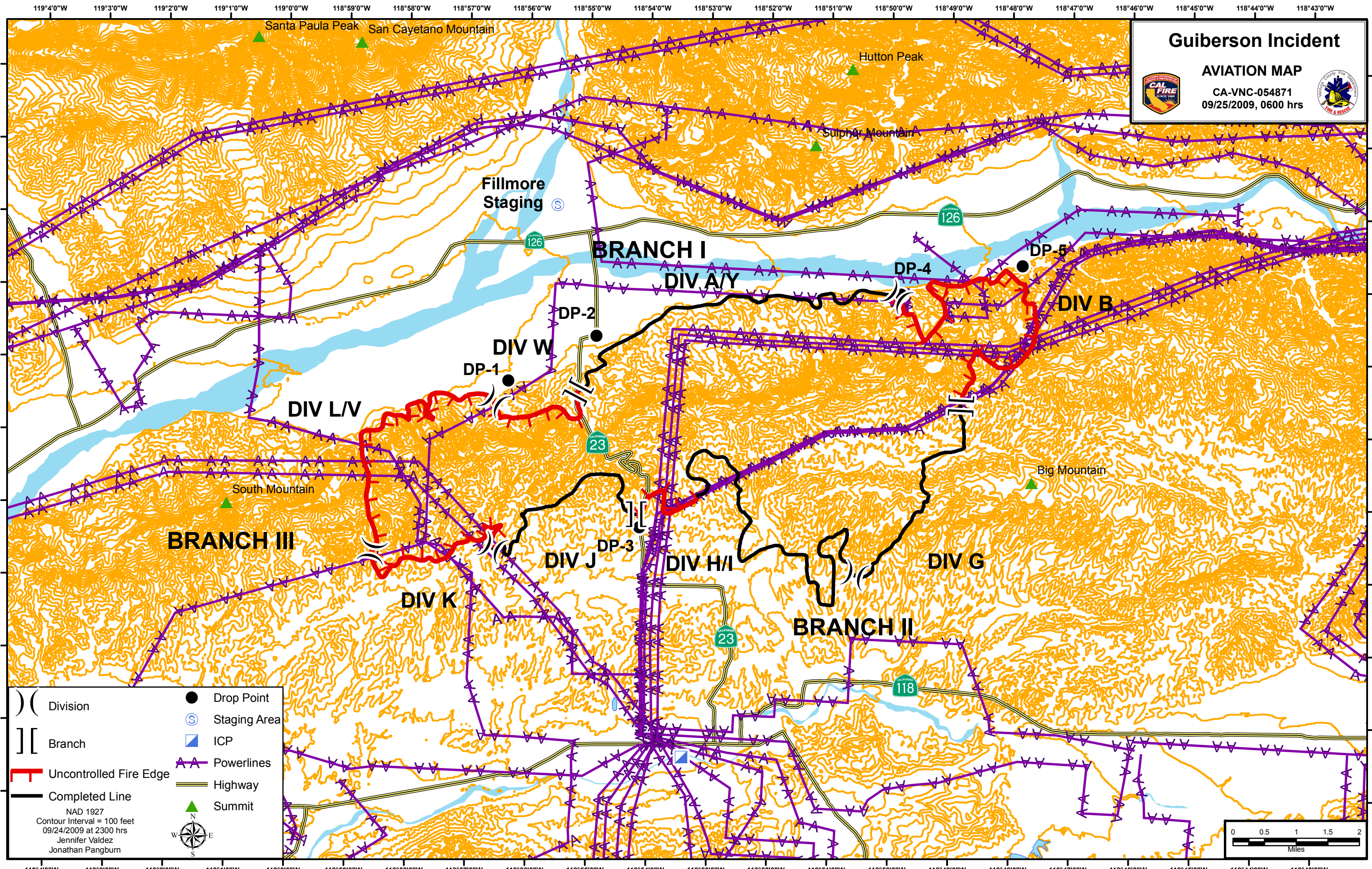


Guiberson Incident

AVIATION MAP

CA-VNC-054871
09/25/2009, 0600 hrs



- Division
- Branch
- Uncontrolled Fire Edge
- Completed Line
- Drop Point
- Staging Area
- ICP
- Powerlines
- Highway
- Summit

NAD 1927
Contour Interval = 100 feet
09/24/2009 at 2300 hrs
Jennifer Valdez
Jonathan Pangburn

