

119°55'W 119°54'W 119°53'W 119°52'W 119°51'W 119°50'W 119°49'W 119°48'W 119°47'W 119°46'W 119°45'W 119°44'W 119°43'W 119°42'W 119°41'W 119°40'W 119°39'W 119°38'W 119°37'W 119°36'W 119°35'W

37°49'N
37°48'N
37°47'N
37°46'N
37°45'N
37°44'N
37°43'N
37°42'N
37°41'N
37°40'N

37°49'N
37°48'N
37°47'N
37°46'N
37°45'N
37°44'N
37°43'N
37°42'N
37°41'N
37°40'N

Big Meadow Fire
CA-YNP-3660
7,240 Acres
9/3/2009
0600

- Uncontrolled Fire Edge
- Completed Line
- Completed Dozer Line
- Proposed Dozer Line
- Spot Fire
- Repeater
- Drop Point
- Safety Zone
- Dip Site or Heliwell
- HazMat

0 0.4 0.8 1.6 Miles

1:74,262

CY CIIMT1
September 2, 2009
2130 Hours

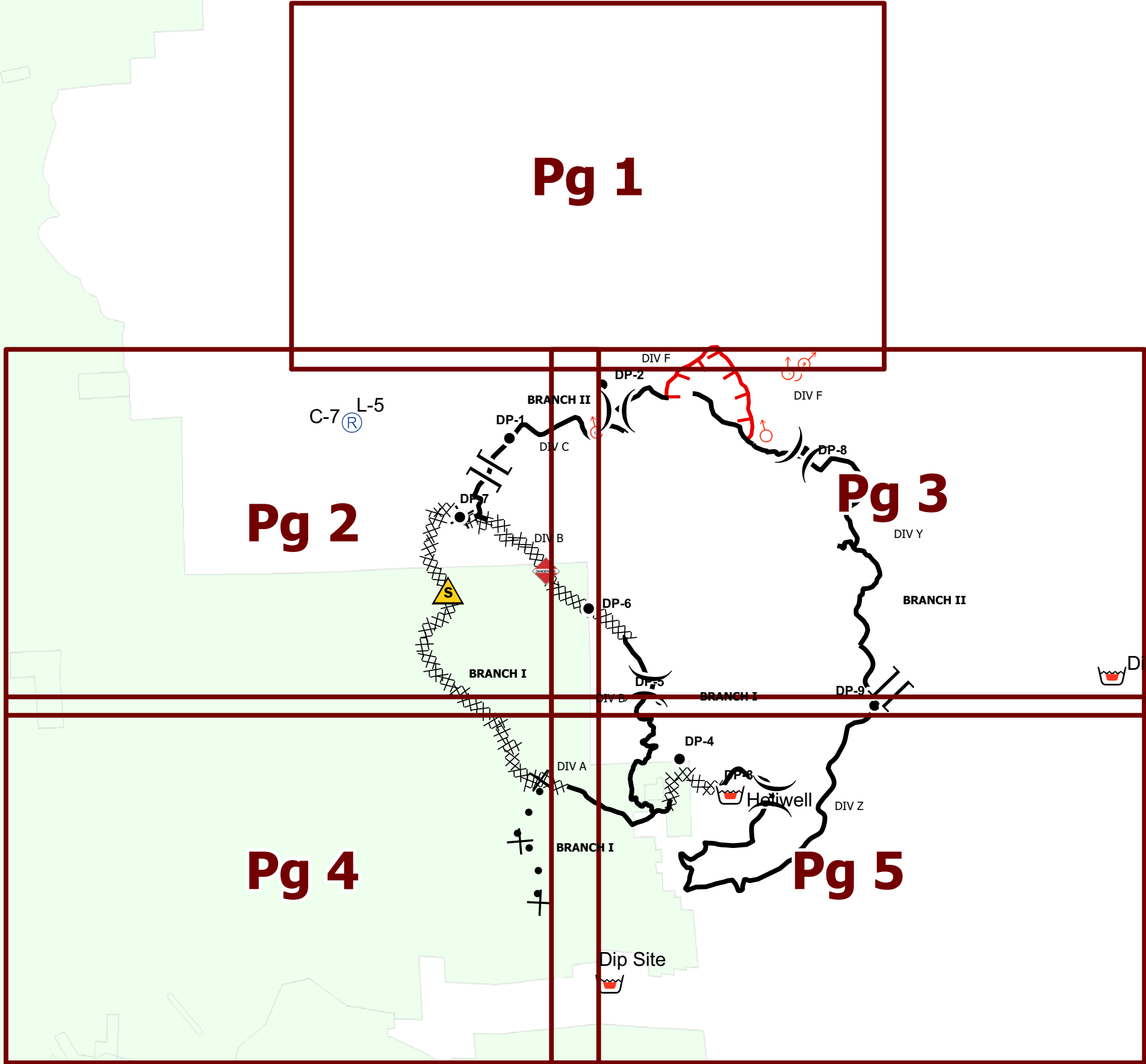
Pg 1

Pg 2

Pg 3

Pg 4

Pg 5



119°55'W 119°54'W 119°53'W 119°52'W 119°51'W 119°50'W 119°49'W 119°48'W 119°47'W 119°46'W 119°45'W 119°44'W 119°43'W 119°42'W 119°41'W 119°40'W 119°39'W 119°38'W 119°37'W 119°36'W