

120° 06.0000' W

120° 04.0000' W

120° 02.0000' W

120° 00.0000' W

119° 58.0000' W

119° 56.0000' W

119° 54.0000' W

034° 58.0000' N

034° 56.0000' N

034° 54.0000' N

034° 58.0000' N

034° 56.0000' N

034° 54.0000' N

**BRANCH II**

**DIV. W**

**DIV. T**

**DIV. B**

**BRANCH III**

**BRANCH I**

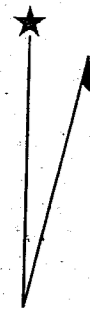
**DIV. A**

**DIV. 2**

**LA BREA FIRE  
CA-LPF-002631  
DAY SHIFT  
August 10, 2009**

- CONTROLLED LINE
- |||| UNCONTROLLED LINE
- ||| BRANCH BREAK
- ) ( DIVISION BREAK
- XXXX DOZER LINE
- H-1 HELISPOT

Magnetic Declination



13° E

120° 06.0000' W

120° 04.0000' W

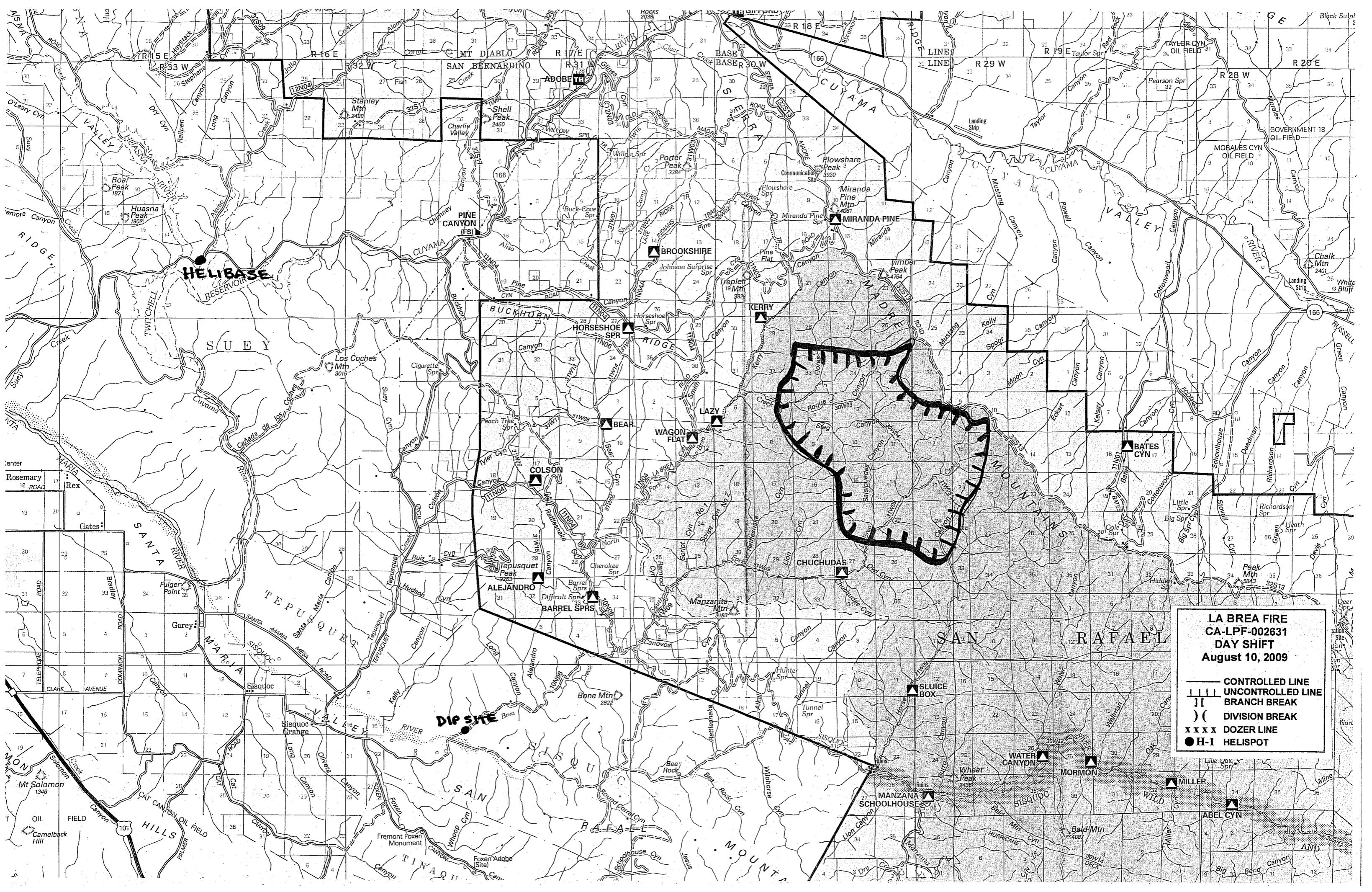
120° 02.0000' W

120° 00.0000' W

119° 58.0000' W

119° 56.0000' W

119° 54.0000' W



**LA BREA FIRE  
CA-LPF-002631  
DAY SHIFT  
August 10, 2009**

——— CONTROLLED LINE  
 ||| UNCONTROLLED LINE  
 II BRANCH BREAK  
 ) ( DIVISION BREAK  
 x x x x DOZER LINE  
 ● H-1 HELISPOT

**HELIBASE**

**DIP SITE**

**LA BREA FIRE  
CA-LPF-002631  
DAY SHIFT  
August 10, 2009**

——— CONTROLLED LINE  
 ||| UNCONTROLLED LINE  
 II BRANCH BREAK  
 ) ( DIVISION BREAK  
 x x x x DOZER LINE  
 ● H-1 HELISPOT

Rosemary  
18 ROAD  
Rex

Gates  
18 ROAD  
Bradley

CLARK  
AVENUE  
DOMINION

101  
CAT CANYON OIL FIELD

MT DIABLO

SAN BERNARDINO

PINE CANYON (FS)

BUCKHORN

ALEJANDRO

SAN RAFAEL

ADOBE

MIRANDA-PINE

BROOKSHIRE

BARREL SPRS

MANZANA SCHOOLHOUSE

BASE R 30 W

MIRANDA-PINE

KERRY

CHUCHUDAS

WATER CANYON

BASE R 18 E

MIRANDA-PINE

KERRY

CHUCHUDAS

SLUICE BOX

BASE R 29 W

MIRANDA-PINE

KERRY

CHUCHUDAS

SLUICE BOX

BASE R 19 E

MIRANDA-PINE

KERRY

CHUCHUDAS

SLUICE BOX

BASE R 28 W

MIRANDA-PINE

KERRY

CHUCHUDAS

SLUICE BOX

BASE R 20 E

MIRANDA-PINE

KERRY

CHUCHUDAS

SLUICE BOX

BASE R 20 E

MIRANDA-PINE

KERRY

CHUCHUDAS

SLUICE BOX