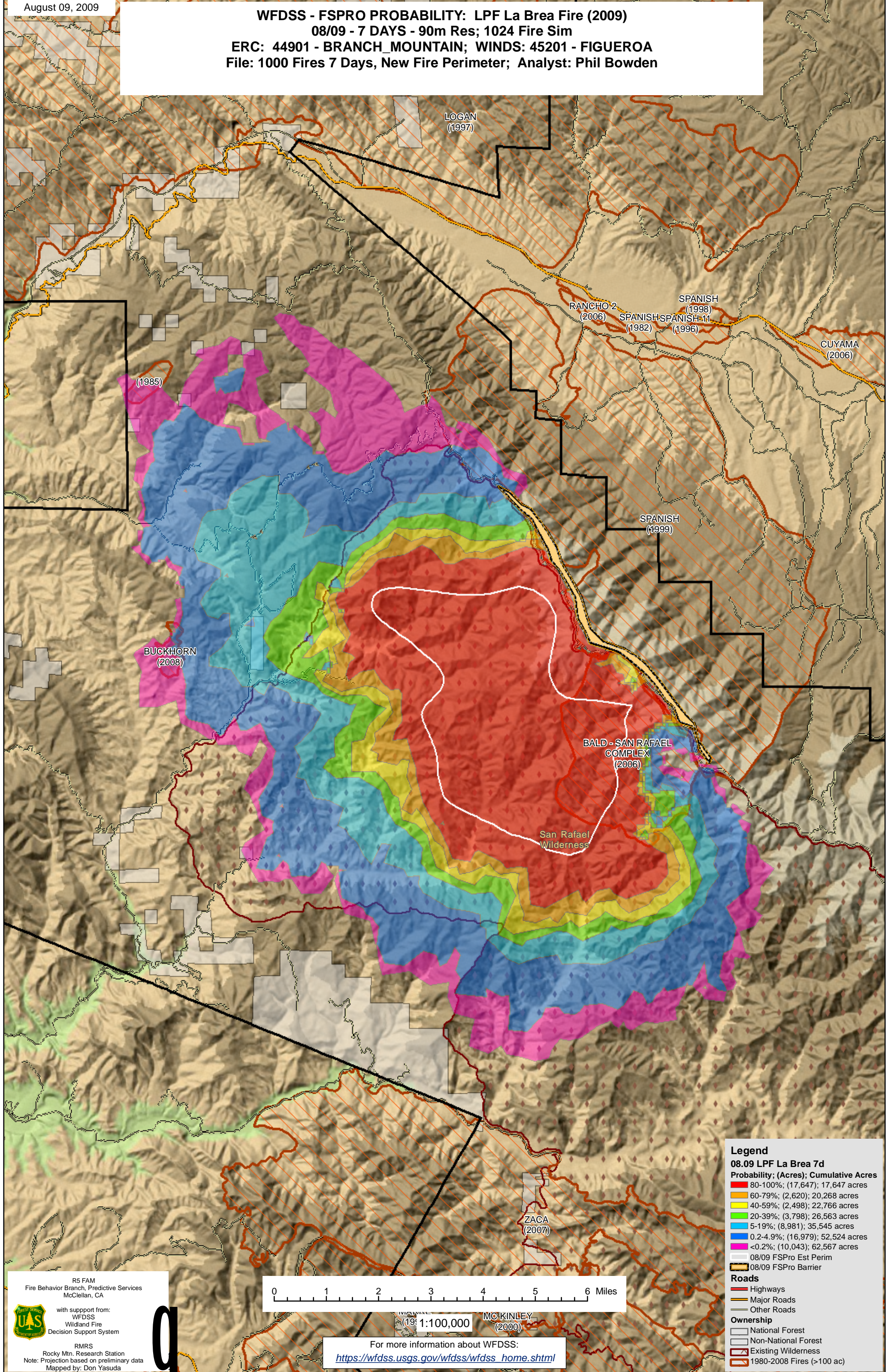


WFDSS - FSPRO PROBABILITY: LPF La Brea Fire (2009)
08/09 - 7 DAYS - 90m Res; 1024 Fire Sim
ERC: 44901 - BRANCH_MOUNTAIN; WINDS: 45201 - FIGUEROA
File: 1000 Fires 7 Days, New Fire Perimeter; Analyst: Phil Bowden



Legend

08.09 LPF La Brea 7d
Probability; (Acres); Cumulative Acres

- 80-100%; (17,647); 17,647 acres
- 60-79%; (2,620); 20,268 acres
- 40-59%; (2,498); 22,766 acres
- 20-39%; (3,798); 26,563 acres
- 5-19%; (8,981); 35,545 acres
- 0.2-4.9%; (16,979); 52,524 acres
- <0.2%; (10,043); 62,567 acres

08/09 FSPRO Est Perim
08/09 FSPRO Barrier

Roads

- Highways
- Major Roads
- Other Roads

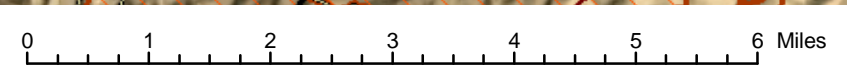
Ownership

- National Forest
- Non-National Forest
- Existing Wilderness
- 1980-2008 Fires (>100 ac)

R5 FAM
Fire Behavior Branch, Predictive Services
McClellan, CA

with support from:
WFDSS
Wildland Fire
Decision Support System

RMRS
Rocky Mtn. Research Station
Note: Projection based on preliminary data
Mapped by: Don Yasuda



For more information about WFDSS:
https://wfdss.usgs.gov/wfdss/wfdss_home.shtml