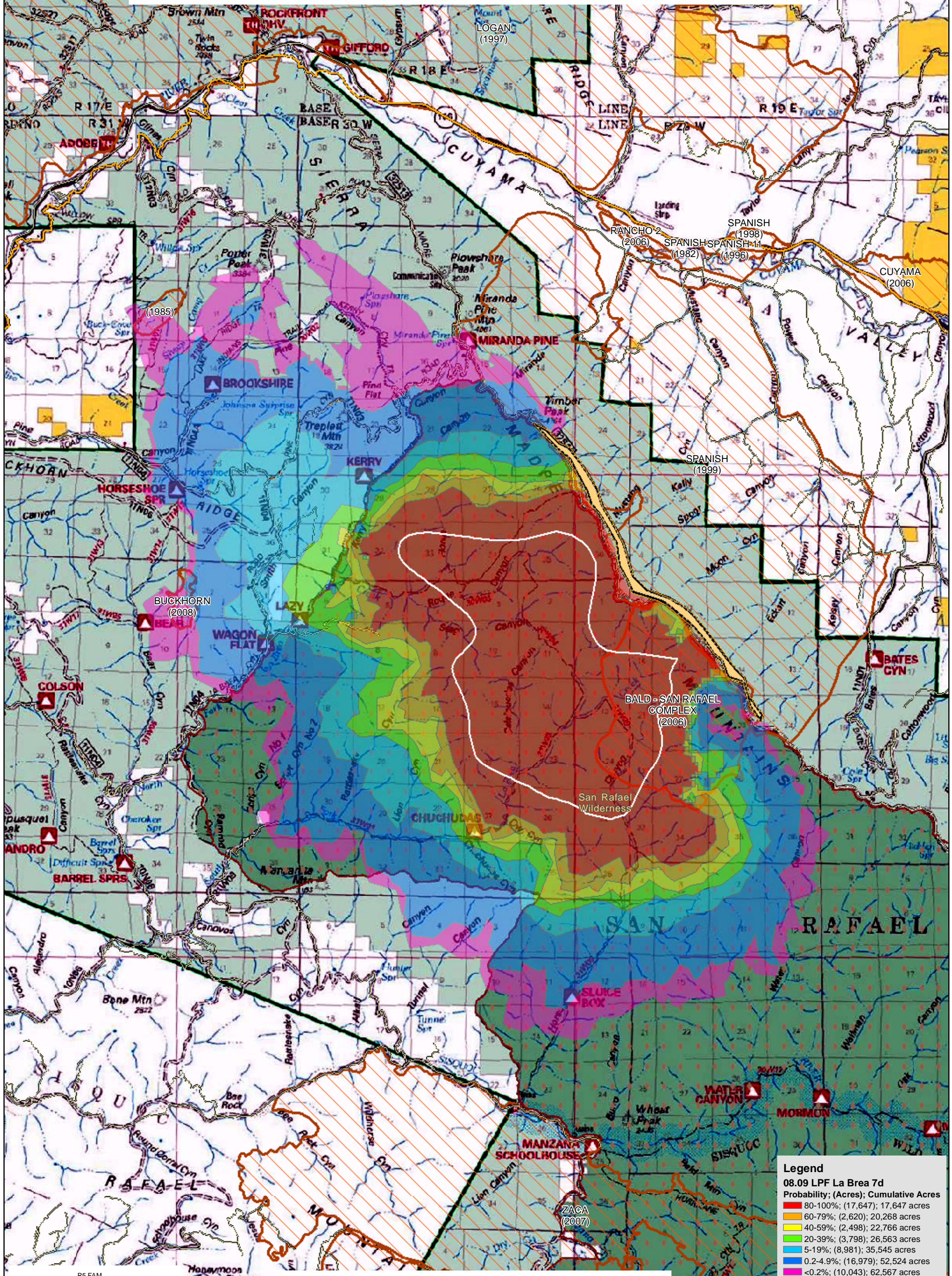


WFDSS - FSPRO PROBABILITY: LPF La Brea Fire (2009)
08/09 - 7 DAYS - 90m Res; 1024 Fire Sim
ERC: 44901 - BRANCH_MOUNTAIN; WINDS: 45201 - FIGUEROA
File: 1000 Fires 7 Days, New Fire Perimeter; Analyst: Phil Bowden



Legend

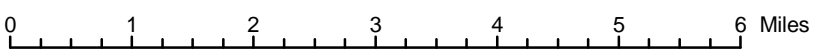
08.09 LPF La Brea 7d Probability; (Acres); Cumulative Acres

80-100%	(17,647); 17,647 acres
60-79%	(2,620); 20,268 acres
40-59%	(2,498); 22,766 acres
20-39%	(3,798); 26,563 acres
5-19%	(8,981); 35,545 acres
0.2-4.9%	(16,979); 52,524 acres
<0.2%	(10,043); 62,567 acres

08/09 FSPRO Est Perim
08/09 FSPRO Barrier

Roads

- Highways
- Major Roads
- Other Roads
- Existing Wilderness
- 1980-2008 Fires (>100 ac)



R5 FAM
Fire Behavior Branch, Predictive Services
McClellan, CA

with support from:
WFDSS
Wildland Fire
Decision Support System

RMRS
Rocky Mtn. Research Station
Note: Projection based on preliminary data
Mapped by: Don Yasuda

For more information about WFDSS:
https://wfdss.usgs.gov/wfdss/wfdss_home.shtml

