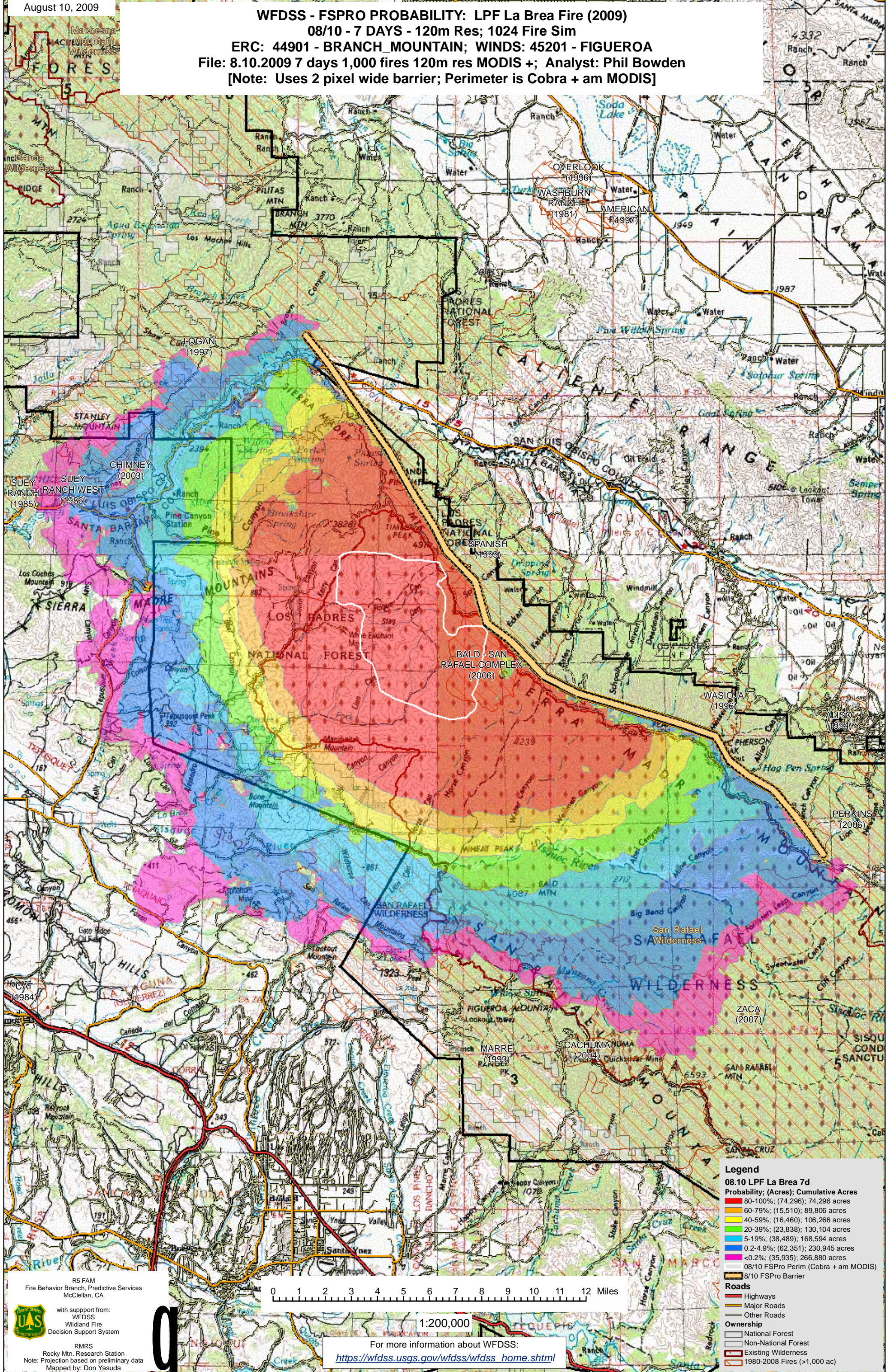


WFDSS - FSPRO PROBABILITY: LPF La Brea Fire (2009)
08/10 - 7 DAYS - 120m Res; 1024 Fire Sim
ERC: 44901 - BRANCH_MOUNTAIN; WINDS: 45201 - FIGUEROA
File: 8.10.2009 7 days 1,000 fires 120m res MODIS +; Analyst: Phil Bowden
[Note: Uses 2 pixel wide barrier; Perimeter is Cobra + am MODIS]



Legend

08.10 LPF La Brea 7d

Probability; (Acres); Cumulative Acres

- 80-100%; (74,296); 74,296 acres
- 60-79%; (15,510); 89,806 acres
- 40-59%; (16,460); 106,266 acres
- 20-39%; (23,838); 130,104 acres
- 5-19%; (38,489); 168,594 acres
- 0.2-4.9%; (62,351); 230,945 acres
- <0.2%; (35,935); 266,880 acres

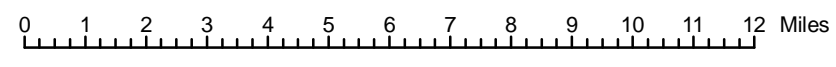
- 8/10 FSPRO Perim (Cobra + am MODIS)
- 8/10 FSPRO Barrier

Roads

- Highways
- Major Roads
- Other Roads

Ownership

- National Forest
- Non-National Forest
- Existing Wilderness
- 1980-2008 Fires (>1,000 ac)



1:200,000

For more information about WFDSS:
https://wfdss.usgs.gov/wfdss/wfdss_home.shtml

R5 FAM
 Fire Behavior Branch, Predictive Services
 McClellan, CA

with support from:
 WFDSS
 Wildland Fire
 Decision Support System

RMRS
 Rocky Mtn. Research Station
 Note: Projection based on preliminary data
 Mapped by: Don Yasuda