

August 13, 2009

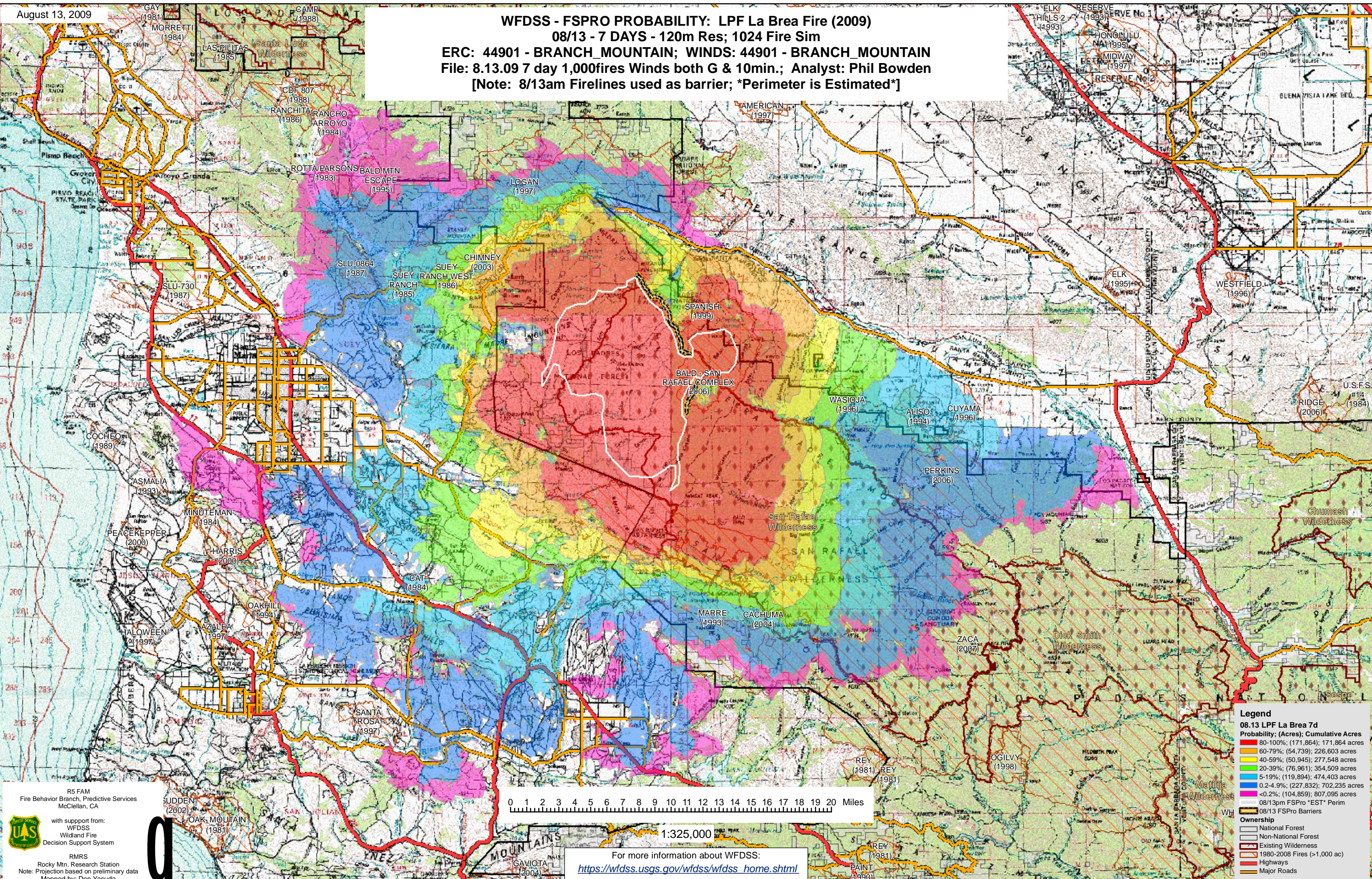
WFDSS - FSPRO PROBABILITY: LPF La Brea Fire (2009)

08/13 - 7 DAYS - 120m Res; 1024 Fire Sim

ERC: 44901 - BRANCH_MOUNTAIN; WINDS: 44901 - BRANCH_MOUNTAIN

File: 8.13.09 7 day 1,000fires Winds both G & 10min.; Analyst: Phil Bowden

[Note: 8/13am Firelines used as barrier; *Perimeter is Estimated*]



RS FAM
Fire Behavior Branch, Predictive Services
McClellan, CA

with support from:
WFDSS
Wildland Fire
Decision Support System

RMRS
Rocky Mtn. Research Station
Note: Projection based on preliminary data
Mapped by: Don Yasuda

Legend

08/13 LPF La Brea 7d

Probability; (Acres); Cumulative Acres

- 80-100%; (171,864); 171,864 acres
- 60-79%; (54,739); 226,603 acres
- 40-59%; (50,945); 277,548 acres
- 20-39%; (76,961); 354,509 acres
- 5-19%; (119,894); 474,403 acres
- 0.2-4.9%; (227,832); 702,235 acres
- <0.2%; (104,859); 807,095 acres

- 08/13pm FSPro "EST" Perim
- 08/13 FSPro Barriers

Ownership

- National Forest
- Non-National Forest
- Existing Wilderness
- 1980-2008 Fires (>1,000 ac)
- Highways
- Major Roads

For more information about WFDSS:
https://wfdss.usgs.gov/wfdss/wfdss_home.shtml