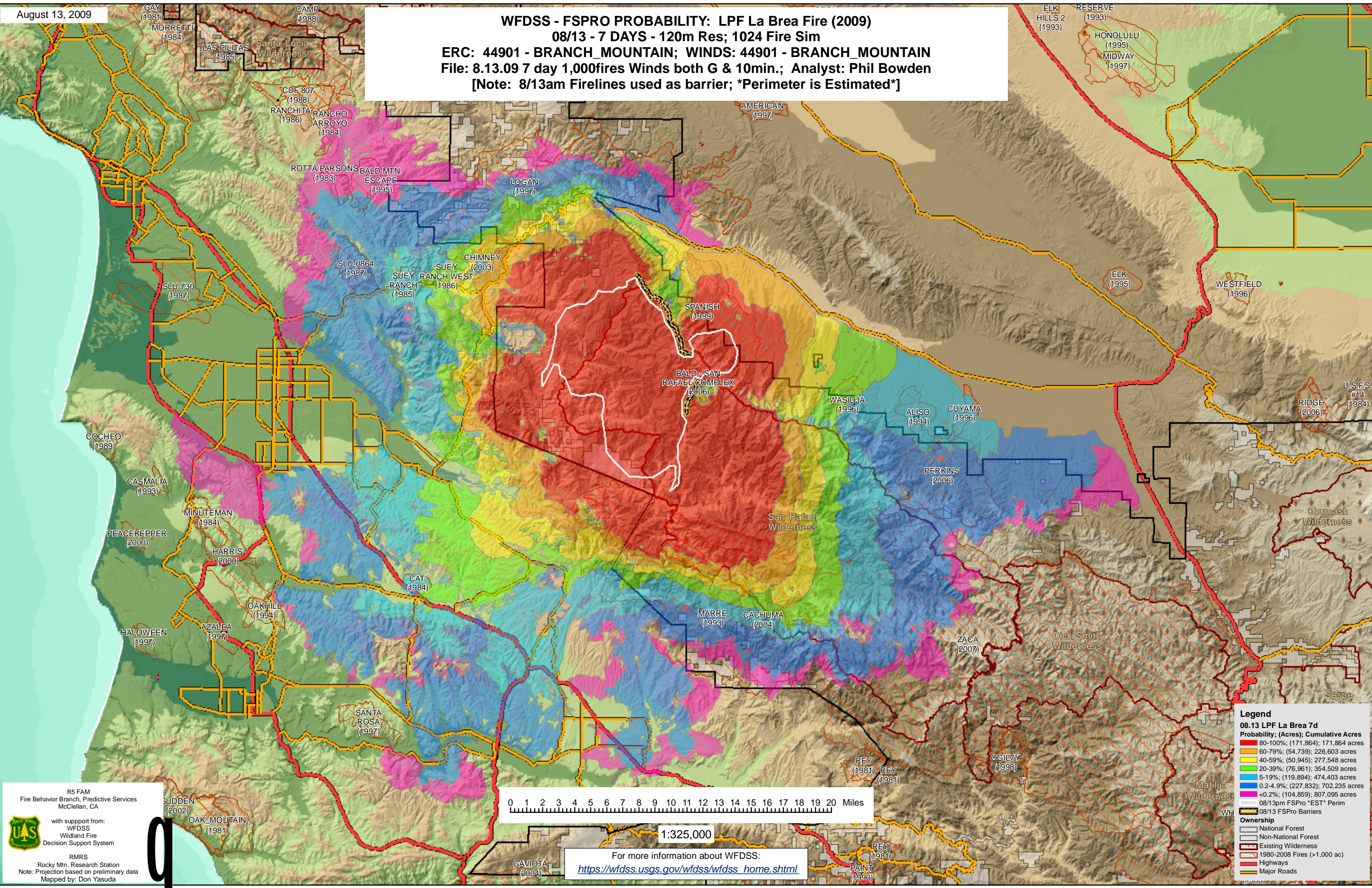
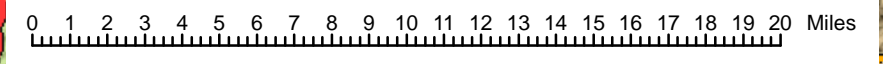


August 13, 2009

WFDSS - FSPRO PROBABILITY: LPF La Brea Fire (2009)
08/13 - 7 DAYS - 120m Res; 1024 Fire Sim
ERC: 44901 - BRANCH_MOUNTAIN; WINDS: 44901 - BRANCH_MOUNTAIN
File: 8.13.09 7 day 1,000fires Winds both G & 10min.; Analyst: Phil Bowden
[Note: 8/13am Firelines used as barrier; *Perimeter is Estimated*]



R5 FAM
Fire Behavior Branch, Predictive Services
McClellan, CA
with support from:
WFDSS
Wildland Fire
Decision Support System
RMRS
Rocky Mtn. Research Station
Note: Projection based on preliminary data
Mapped by: Don Yasuda



1:325,000

For more information about WFDSS:
https://wfdss.usgs.gov/wfdss/wfdss_home.shtml

Legend
08.13 LPF La Brea 7d

Probability; (Acres); Cumulative Acres

- 80-100%; (171,864); 171,864 acres
- 60-79%; (54,739); 226,603 acres
- 40-59%; (50,945); 277,548 acres
- 20-39%; (76,961); 354,509 acres
- 5-19%; (119,894); 474,403 acres
- 0.2-4.9%; (227,832); 702,235 acres
- <0.2%; (104,859); 807,095 acres

08/13pm FSPro *EST* Perim
08/13 FSPro Barriers

Ownership

- National Forest
- Non-National Forest
- Existing Wilderness
- 1980-2008 Fires (>1,000 ac)
- Highways
- Major Roads