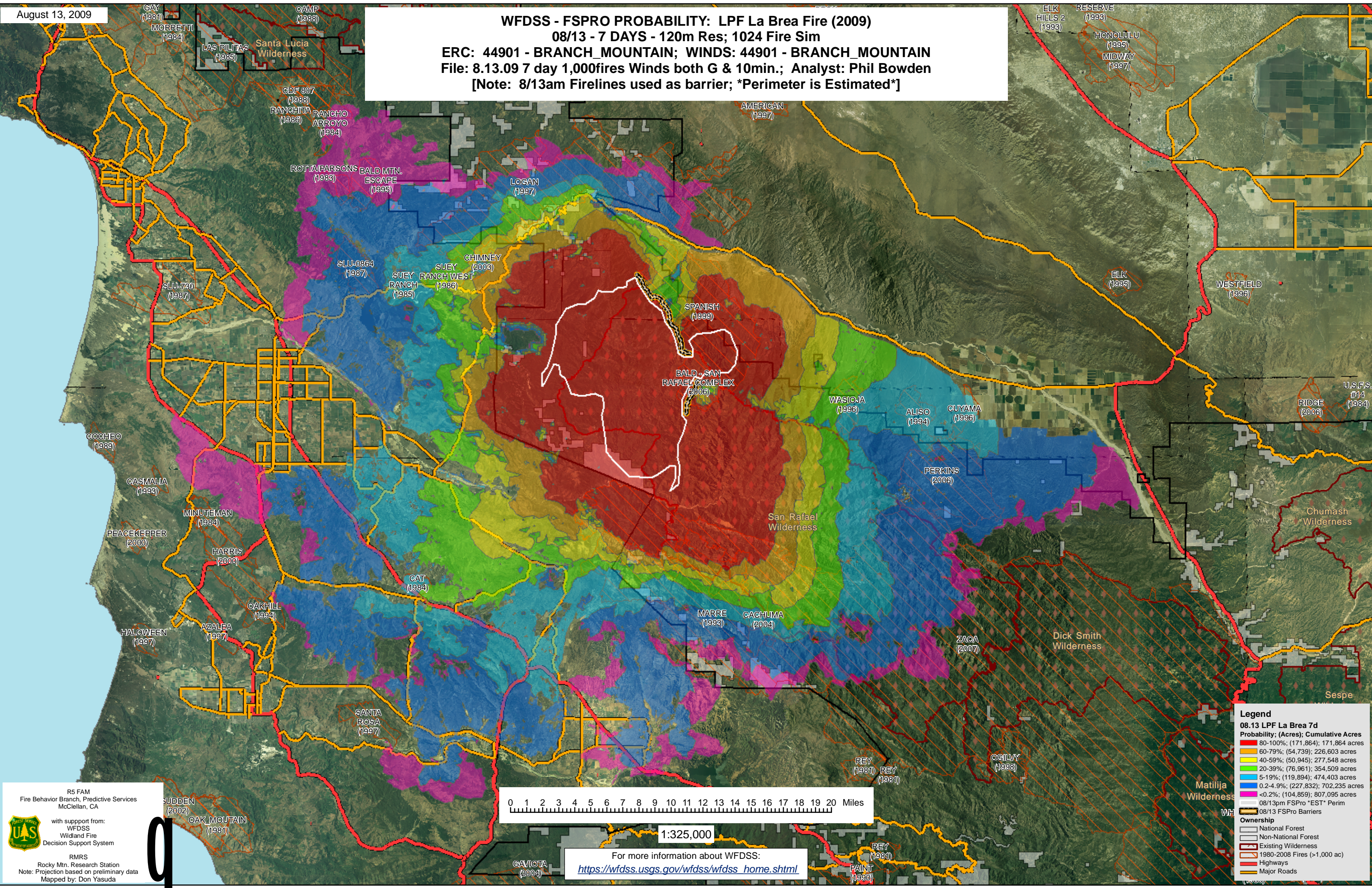
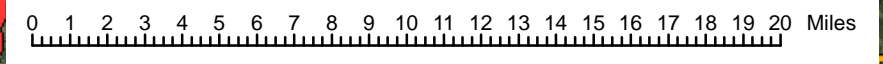


August 13, 2009

**WFDSS - FSPRO PROBABILITY: LPF La Brea Fire (2009)**  
**08/13 - 7 DAYS - 120m Res; 1024 Fire Sim**  
**ERC: 44901 - BRANCH\_MOUNTAIN; WINDS: 44901 - BRANCH\_MOUNTAIN**  
**File: 8.13.09 7 day 1,000fires Winds both G & 10min.; Analyst: Phil Bowden**  
**[Note: 8/13am Firelines used as barrier; \*Perimeter is Estimated\*]**



RS FAM  
Fire Behavior Branch, Predictive Services  
McClellan, CA  
with support from:  
WFDSS  
Wildland Fire  
Decision Support System  
RMRS  
Rocky Mtn. Research Station  
Note: Projection based on preliminary data  
Mapped by: Don Yasuda



1:325,000

For more information about WFDSS:  
[https://wfdss.usgs.gov/wfdss/wfdss\\_home.shtml](https://wfdss.usgs.gov/wfdss/wfdss_home.shtml)

**Legend**

**08.13 LPF La Brea 7d**

**Probability; (Acres); Cumulative Acres**

- 80-100%; (171,864); 171,864 acres
- 60-79%; (54,739); 226,603 acres
- 40-59%; (50,945); 277,548 acres
- 20-39%; (76,961); 354,509 acres
- 5-19%; (119,894); 474,403 acres
- 0.2-4.9%; (227,832); 702,235 acres
- <0.2%; (104,859); 807,095 acres
- 08/13pm FSPro \*EST\* Perim
- 08/13 FSPro Barriers

**Ownership**

- National Forest
- Non-National Forest
- Existing Wilderness
- 1980-2008 Fires (>1,000 ac)
- Highways
- Major Roads