

August 17, 2009

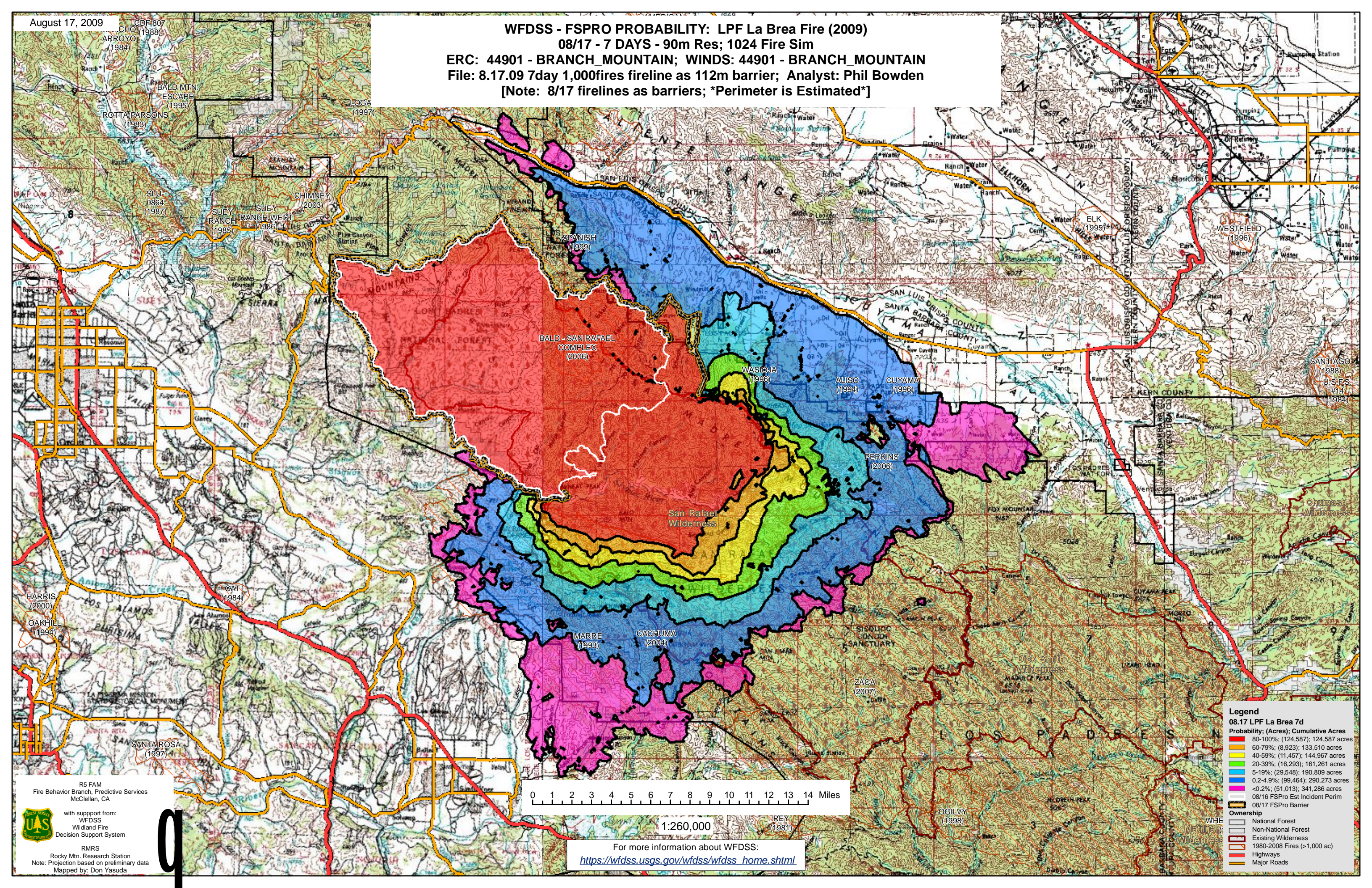
WFDSS - FSPRO PROBABILITY: LPF La Brea Fire (2009)

08/17 - 7 DAYS - 90m Res; 1024 Fire Sim

ERC: 44901 - BRANCH_MOUNTAIN; WINDS: 44901 - BRANCH_MOUNTAIN

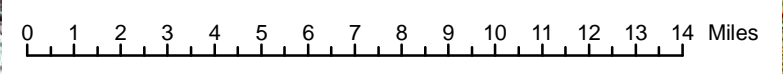
File: 8.17.09 7day 1,000fires fireline as 112m barrier; Analyst: Phil Bowden

[Note: 8/17 firelines as barriers; *Perimeter is Estimated*]



CDF 807 (1988)
 ARROYO (1984)
 BALD MTN ESCAPE (1995)
 ROTTAPARSONS (1983)
 LOGA (1997)
 SLU 0864 (1987)
 SUEY RANCH (1985)
 SUEY RANCH WEST (1986)
 CHIMNEY (2003)
 SPANISH (1999)
 WASIOJA (1996)
 ALISO (1994)
 CUYAMA (1996)
 PERKINS (2006)
 HARRIS (2000)
 OAKHILL (1994)
 CAT (1984)
 MARRE (1993)
 CAGHUMA (2004)
 ZACA (2007)
 SANTA ROSA (1997)
 OGIUVY (1998)

R5 FAM
 Fire Behavior Branch, Predictive Services
 McClellan, CA
 with support from:
 WFDSS
 Wildland Fire
 Decision Support System
 RMRS
 Rocky Mtn. Research Station
 Note: Projection based on preliminary data
 Mapped by: Don Yasuda



1:260,000

For more information about WFDSS:
https://wfdss.usgs.gov/wfdss/wfdss_home.shtml

Legend

08.17 LPF La Brea 7d

Probability; (Acres); Cumulative Acres

- 80-100%; (124,587); 124,587 acres
- 60-79%; (8,923); 133,510 acres
- 40-59%; (11,457); 144,967 acres
- 20-39%; (16,293); 161,261 acres
- 5-19%; (29,548); 190,809 acres
- 0.2-4.9%; (99,464); 290,273 acres
- <0.2%; (51,013); 341,286 acres

08/16 FSPRO Est Incident Perim
 08/17 FSPRO Barrier

Ownership

- National Forest
- Non-National Forest
- Existing Wilderness
- 1980-2008 Fires (>1,000 ac)
- Highways
- Major Roads