

August 17, 2009

WFDSS - FSPRO PROBABILITY: LPF La Brea Fire (2009)

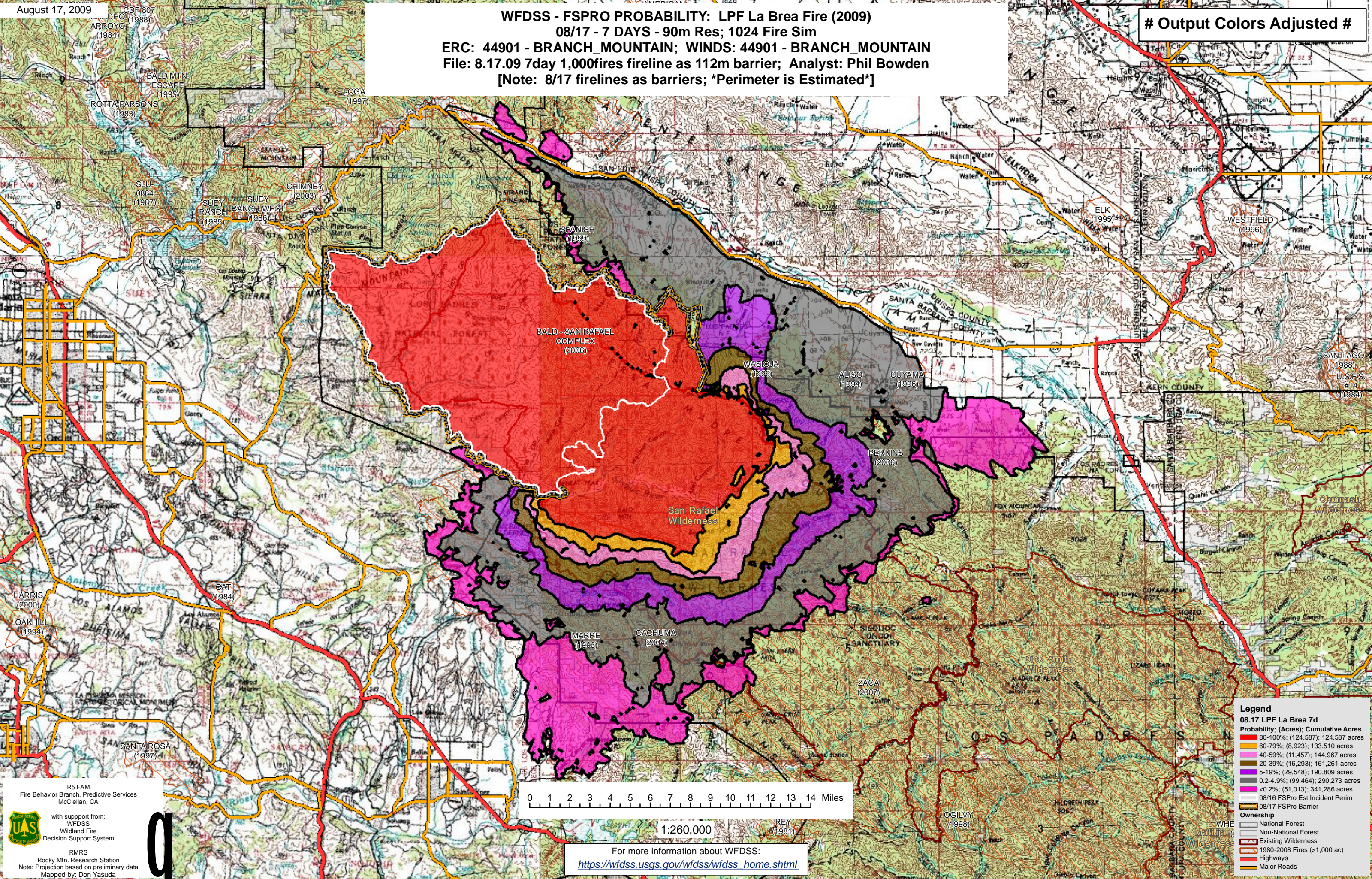
08/17 - 7 DAYS - 90m Res; 1024 Fire Sim

ERC: 44901 - BRANCH_MOUNTAIN; WINDS: 44901 - BRANCH_MOUNTAIN

File: 8.17.09 7day 1,000fires fireline as 112m barrier; Analyst: Phil Bowden

[Note: 8/17 firelines as barriers; *Perimeter is Estimated*]

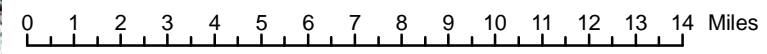
Output Colors Adjusted



R5 FAM
Fire Behavior Branch, Predictive Services
McClellan, CA

with support from:
WFDSS
Wildland Fire
Decision Support System

RMRS
Rocky Mtn. Research Station
Note: Projection based on preliminary data
Mapped by: Don Yasuda



1:260,000

For more information about WFDSS:
https://wfdss.usgs.gov/wfdss/wfdss_home.shtml

Legend
08.17 LPF La Brea 7d

Probability; (Acres); Cumulative Acres

- 80-100%; (124,587); 124,587 acres
- 60-79%; (8,923); 133,510 acres
- 40-59%; (11,457); 144,967 acres
- 20-39%; (16,293); 161,261 acres
- 5-19%; (29,548); 190,809 acres
- 0.2-4.9%; (99,464); 290,273 acres
- <0.2%; (51,013); 341,286 acres

08/16 FSPRO Est Incident Perim
08/17 FSPRO Barrier

Ownership

- National Forest
- Non-National Forest
- Existing Wilderness
- 1980-2008 Fires (>1,000 ac)
- Highways
- Major Roads