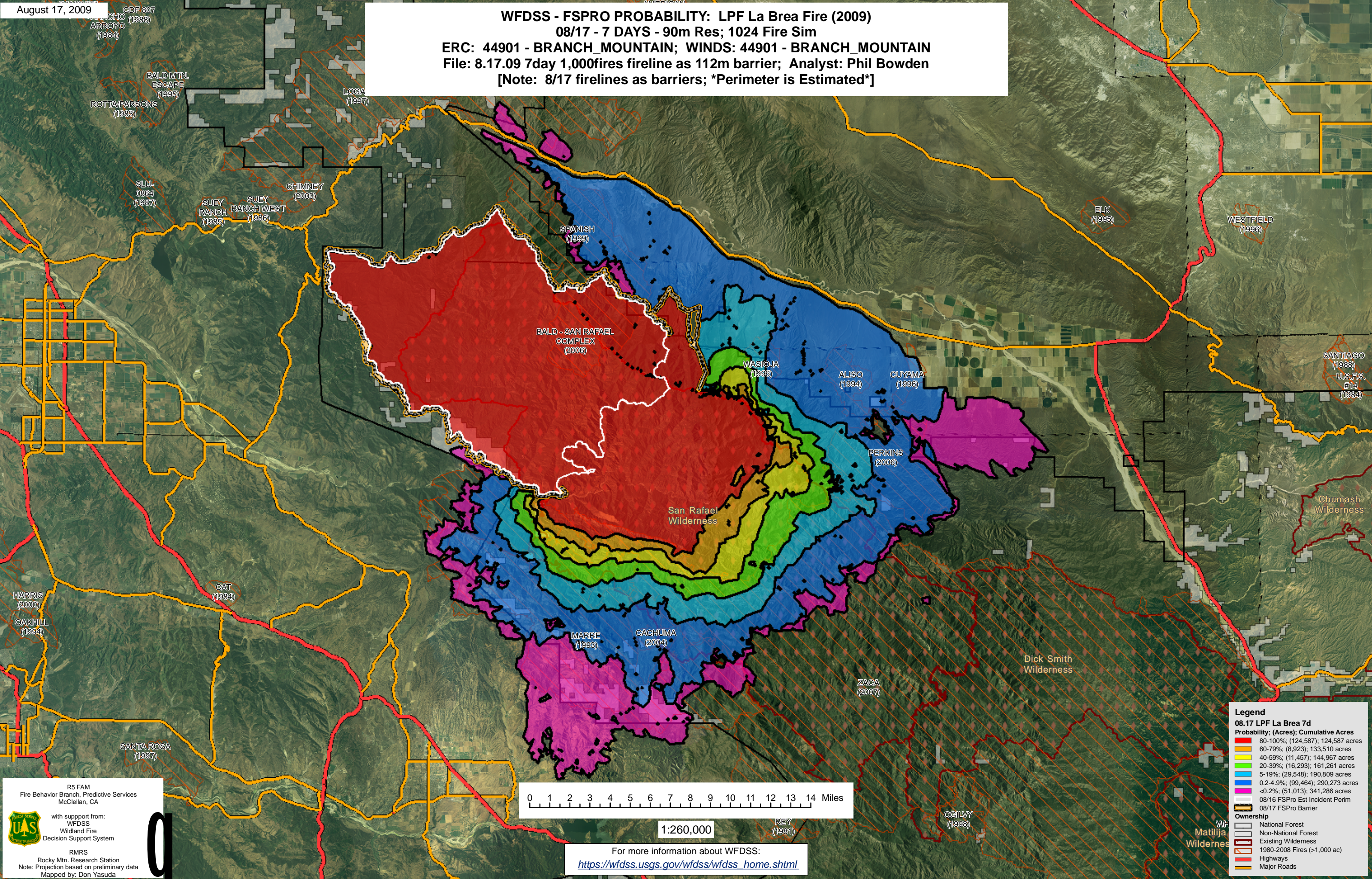
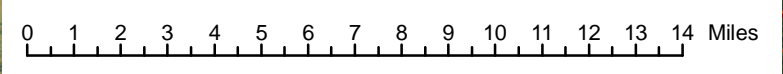


August 17, 2009

**WFDSS - FSPRO PROBABILITY: LPF La Brea Fire (2009)**  
08/17 - 7 DAYS - 90m Res; 1024 Fire Sim  
ERC: 44901 - BRANCH\_MOUNTAIN; WINDS: 44901 - BRANCH\_MOUNTAIN  
File: 8.17.09 7day 1,000fires fireline as 112m barrier; Analyst: Phil Bowden  
[Note: 8/17 firelines as barriers; \*Perimeter is Estimated\*]



RS FAM  
Fire Behavior Branch, Predictive Services  
McClellan, CA  
with support from:  
WFDSS  
Wildland Fire  
Decision Support System  
RMRS  
Rocky Mtn. Research Station  
Note: Projection based on preliminary data  
Mapped by: Don Yasuda



1:260,000

For more information about WFDSS:  
[https://wfdss.usgs.gov/wfdss/wfdss\\_home.shtml](https://wfdss.usgs.gov/wfdss/wfdss_home.shtml)

**Legend**

**08.17 LPF La Brea 7d**

**Probability; (Acres); Cumulative Acres**

- 80-100%; (124,587); 124,587 acres
- 60-79%; (8,923); 133,510 acres
- 40-59%; (11,457); 144,967 acres
- 20-39%; (16,293); 161,261 acres
- 5-19%; (29,548); 190,809 acres
- 0.2-4.9%; (99,464); 290,273 acres
- <0.2%; (51,013); 341,286 acres

**Ownership**

- National Forest
- Non-National Forest
- Existing Wilderness
- 1980-2008 Fires (>1,000 ac)
- Highways
- Major Roads

**08/16 FSPRO Est Incident Perim**

**08/17 FSPRO Barrier**

**WFDSS**

**Matilija Wilderness**

**Dick Smith Wilderness**

**Chumash Wilderness**