

August 17, 2009

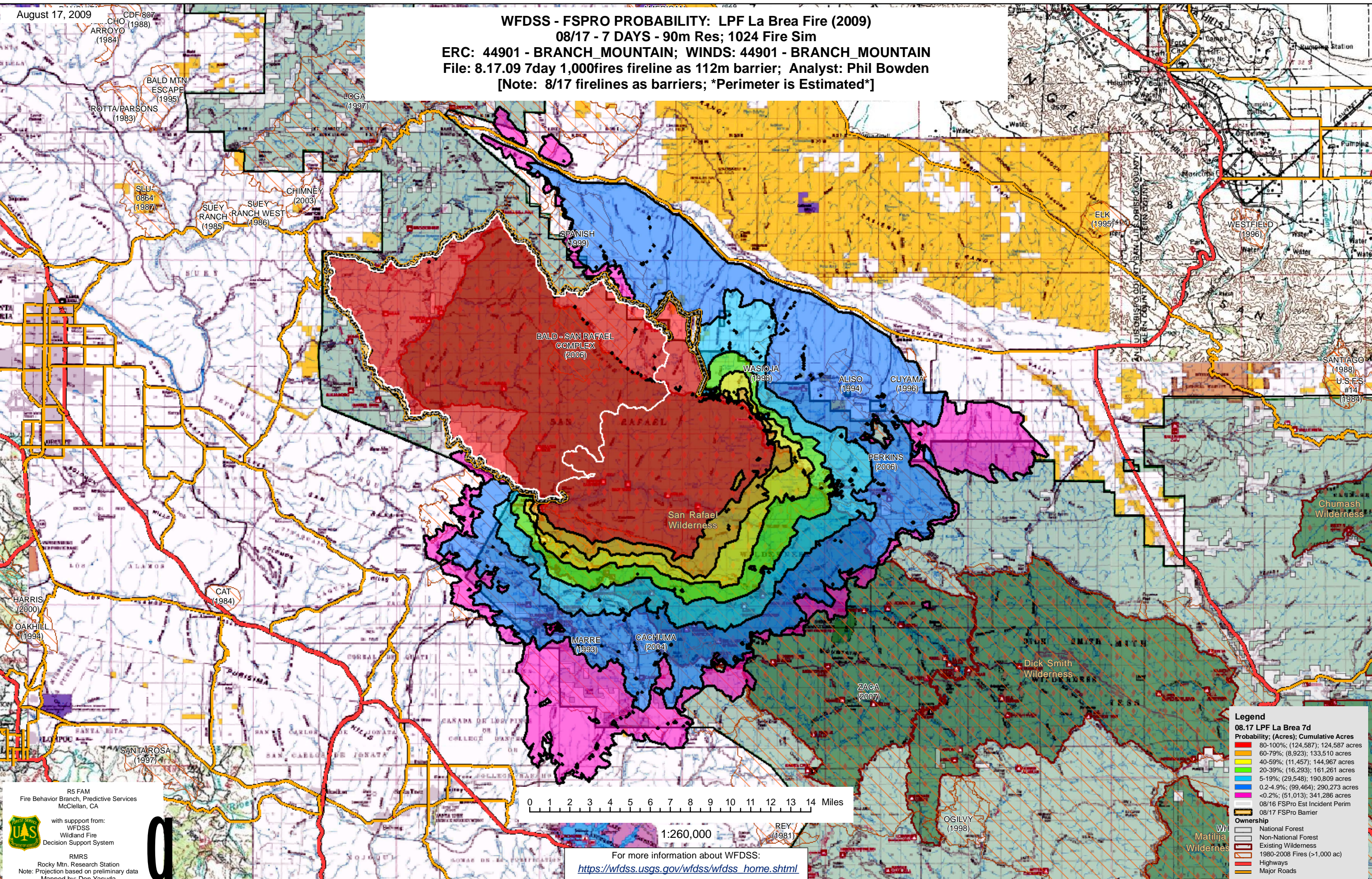
WFDSS - FSPRO PROBABILITY: LPF La Brea Fire (2009)

08/17 - 7 DAYS - 90m Res; 1024 Fire Sim

ERC: 44901 - BRANCH_MOUNTAIN; WINDS: 44901 - BRANCH_MOUNTAIN

File: 8.17.09 7day 1,000fires fireline as 112m barrier; Analyst: Phil Bowden

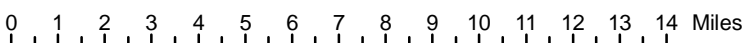
[Note: 8/17 firelines as barriers; *Perimeter is Estimated*]



R5 FAM
Fire Behavior Branch, Predictive Services
McClellan, CA

with support from:
WFDSS
Wildland Fire
Decision Support System

RMRS
Rocky Mtn. Research Station
Note: Projection based on preliminary data
Mapped by: Don Yasuda



1:260,000

For more information about WFDSS:
https://wfdss.usgs.gov/wfdss/wfdss_home.shtml

Legend

08.17 LPF La Brea 7d

Probability; (Acres); Cumulative Acres

80-100%	(124,587); 124,587 acres
60-79%	(8,923); 133,510 acres
40-59%	(11,457); 144,967 acres
20-39%	(16,293); 161,261 acres
5-19%	(29,548); 190,809 acres
0.2-4.9%	(99,464); 290,273 acres
<0.2%	(51,013); 341,286 acres

08/16 FSPro Est Incident Perim
08/17 FSPro Barrier

Ownership

[Symbol]	National Forest
[Symbol]	Non-National Forest
[Symbol]	Existing Wilderness
[Symbol]	1980-2008 Fires (>1,000 ac)
[Symbol]	Highways
[Symbol]	Major Roads

WJH
Matilija
Wildernes