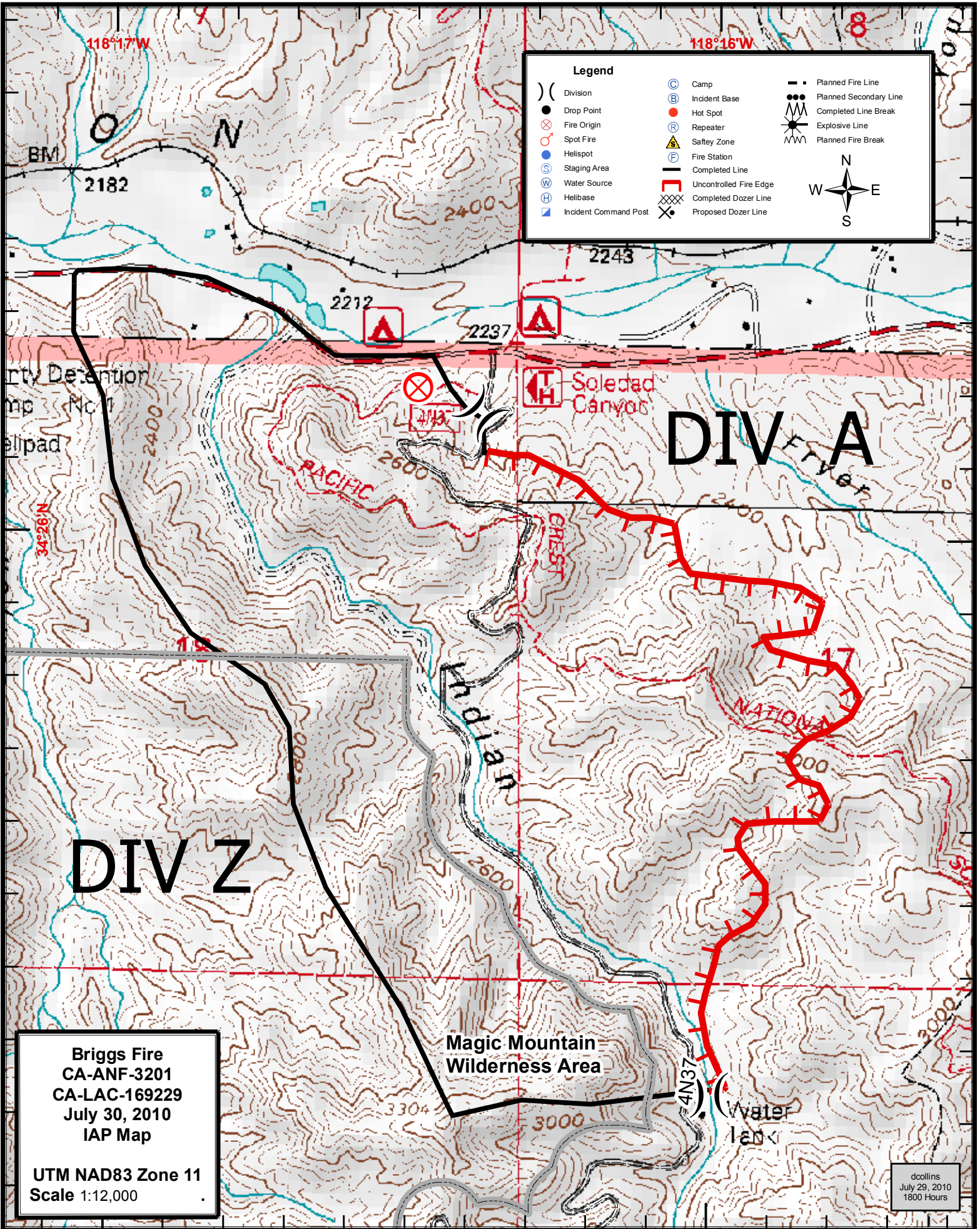


118°17'W

118°16'W

Legend

()	Division	(C)	Camp	- - -	Planned Fire Line
●	Drop Point	(B)	Incident Base	•••	Planned Secondary Line
⊗	Fire Origin	(R)	Hot Spot	—•—	Completed Line Break
⊙	Spot Fire	(R)	Repeater	—•—	Explosive Line
⊙	Helispot	(A)	Safety Zone	—•—	Planned Fire Break
(S)	Staging Area	(F)	Fire Station		
(W)	Water Source	—	Completed Line		
(H)	Helibase	—•—	Uncontrolled Fire Edge		
(I)	Incident Command Post	—•—	Completed Dozer Line		
		—•—	Proposed Dozer Line		



Briggs Fire
 CA-ANF-3201
 CA-LAC-169229
 July 30, 2010
 IAP Map

UTM NAD83 Zone 11
 Scale 1:12,000

dcollins
 July 29, 2010
 1800 Hours