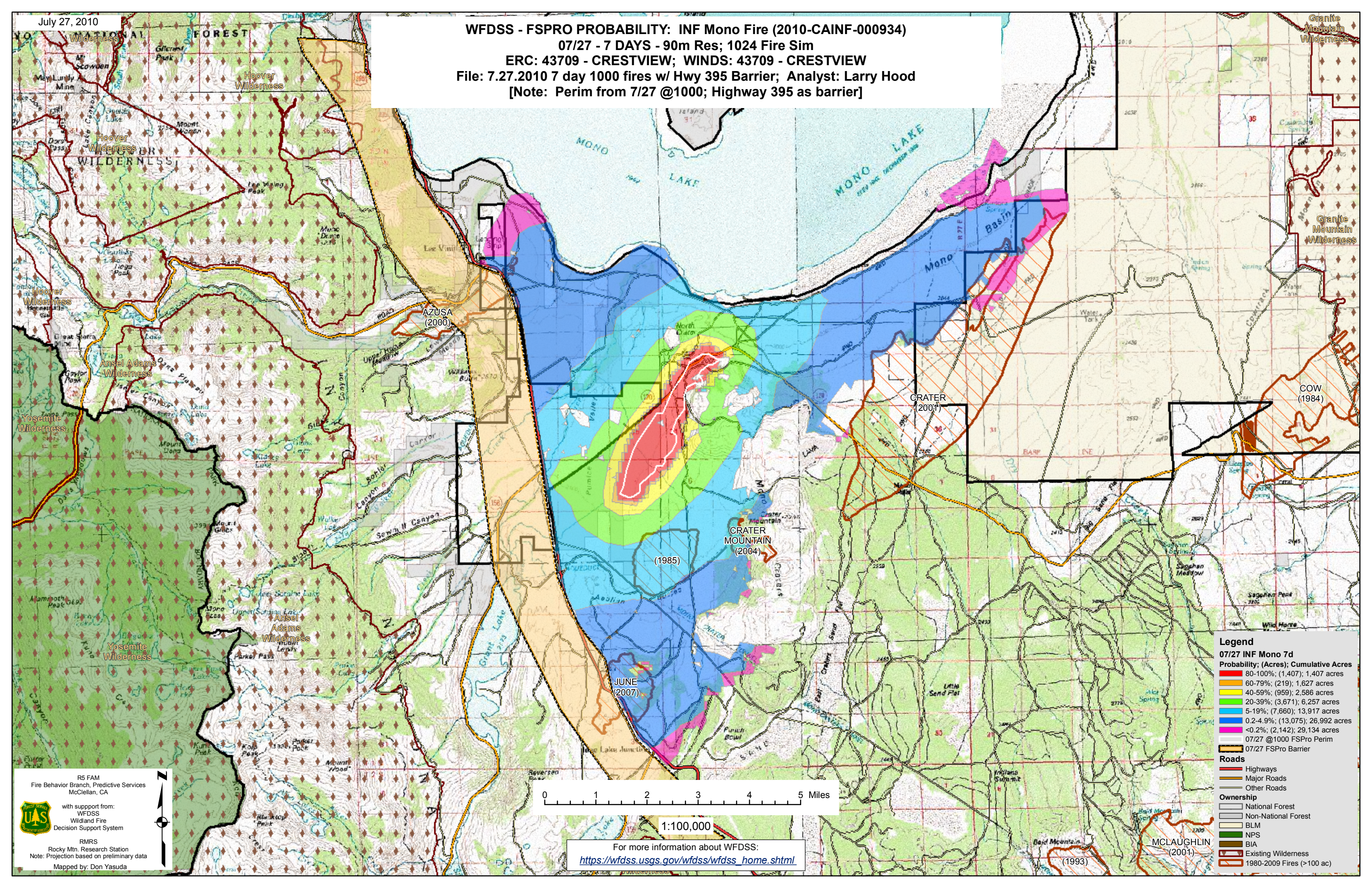


July 27, 2010

WFDSS - FSPRO PROBABILITY: INF Mono Fire (2010-CAINF-000934)
07/27 - 7 DAYS - 90m Res; 1024 Fire Sim
ERC: 43709 - CRESTVIEW; WINDS: 43709 - CRESTVIEW
File: 7.27.2010 7 day 1000 fires w/ Hwy 395 Barrier; Analyst: Larry Hood
[Note: Perim from 7/27 @1000; Highway 395 as barrier]



Legend

07/27 INF Mono 7d
Probability; (Acres); Cumulative Acres

- 80-100%; (1,407); 1,407 acres
- 60-79%; (219); 1,627 acres
- 40-59%; (959); 2,586 acres
- 20-39%; (3,671); 6,257 acres
- 5-19%; (7,660); 13,917 acres
- 0.2-4.9%; (13,075); 26,992 acres
- <0.2%; (2,142); 29,134 acres

- 07/27 @1000 FSPRO Perim
- 07/27 FSPRO Barrier

Roads

- Highways
- Major Roads
- Other Roads

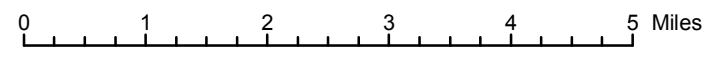
Ownership

- National Forest
- Non-National Forest
- BLM
- NPS
- BIA
- Existing Wilderness
- 1980-2009 Fires (>100 ac)

R5 FAM
Fire Behavior Branch, Predictive Services
McClellan, CA

with support from:
WFDSS
Wildland Fire
Decision Support System

RMRS
Rocky Mtn. Research Station
Note: Projection based on preliminary data
Mapped by: Don Yasuda



1:100,000
For more information about WFDSS:
https://wfdss.usgs.gov/wfdss/wfdss_home.shtml