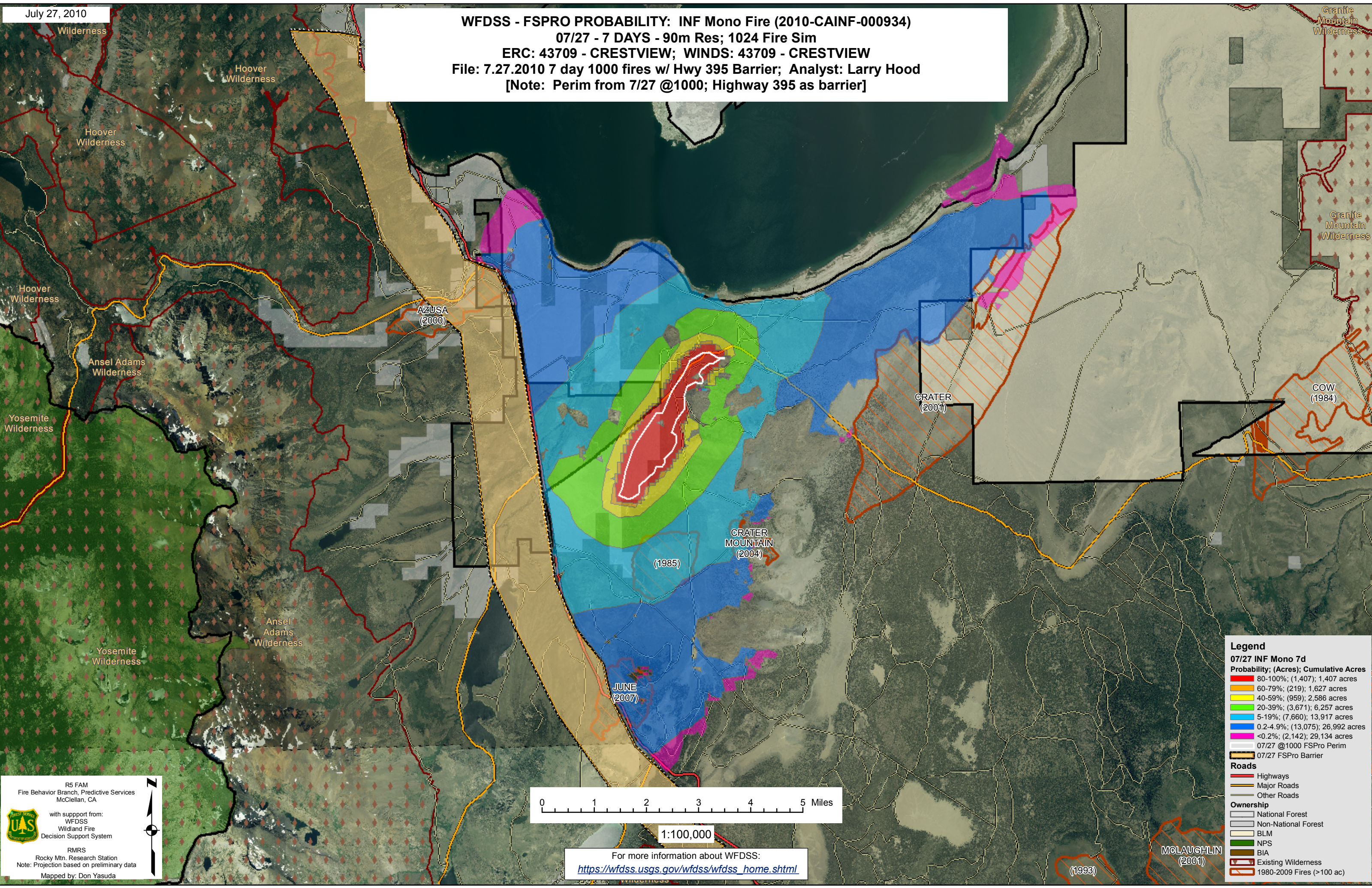


July 27, 2010

WFDSS - FSPRO PROBABILITY: INF Mono Fire (2010-CAINF-000934)  
07/27 - 7 DAYS - 90m Res; 1024 Fire Sim  
ERC: 43709 - CRESTVIEW; WINDS: 43709 - CRESTVIEW  
File: 7.27.2010 7 day 1000 fires w/ Hwy 395 Barrier; Analyst: Larry Hood  
[Note: Perim from 7/27 @1000; Highway 395 as barrier]



**Legend**

**07/27 INF Mono 7d**  
Probability; (Acres); Cumulative Acres

80-100%	(1,407); 1,407 acres
60-79%	(219); 1,627 acres
40-59%	(959); 2,586 acres
20-39%	(3,671); 6,257 acres
5-19%	(7,660); 13,917 acres
0.2-4.9%	(13,075); 26,992 acres
<0.2%	(2,142); 29,134 acres
07/27 @1000 FSPRO Perim	
07/27 FSPRO Barrier	

**Roads**

- Highways
- Major Roads
- Other Roads

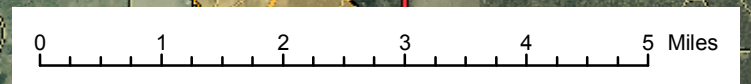
**Ownership**

- National Forest
- Non-National Forest
- BLM
- NPS
- BIA
- Existing Wilderness
- 1980-2009 Fires (>100 ac)

R5 FAM  
Fire Behavior Branch, Predictive Services  
McClellan, CA

with support from:  
WFDSS  
Wildland Fire  
Decision Support System

RMRS  
Rocky Mtn. Research Station  
Note: Projection based on preliminary data  
Mapped by: Don Yasuda



1:100,000

For more information about WFDSS:  
[https://wfdss.usgs.gov/wfdss/wfdss\\_home.shtml](https://wfdss.usgs.gov/wfdss/wfdss_home.shtml)