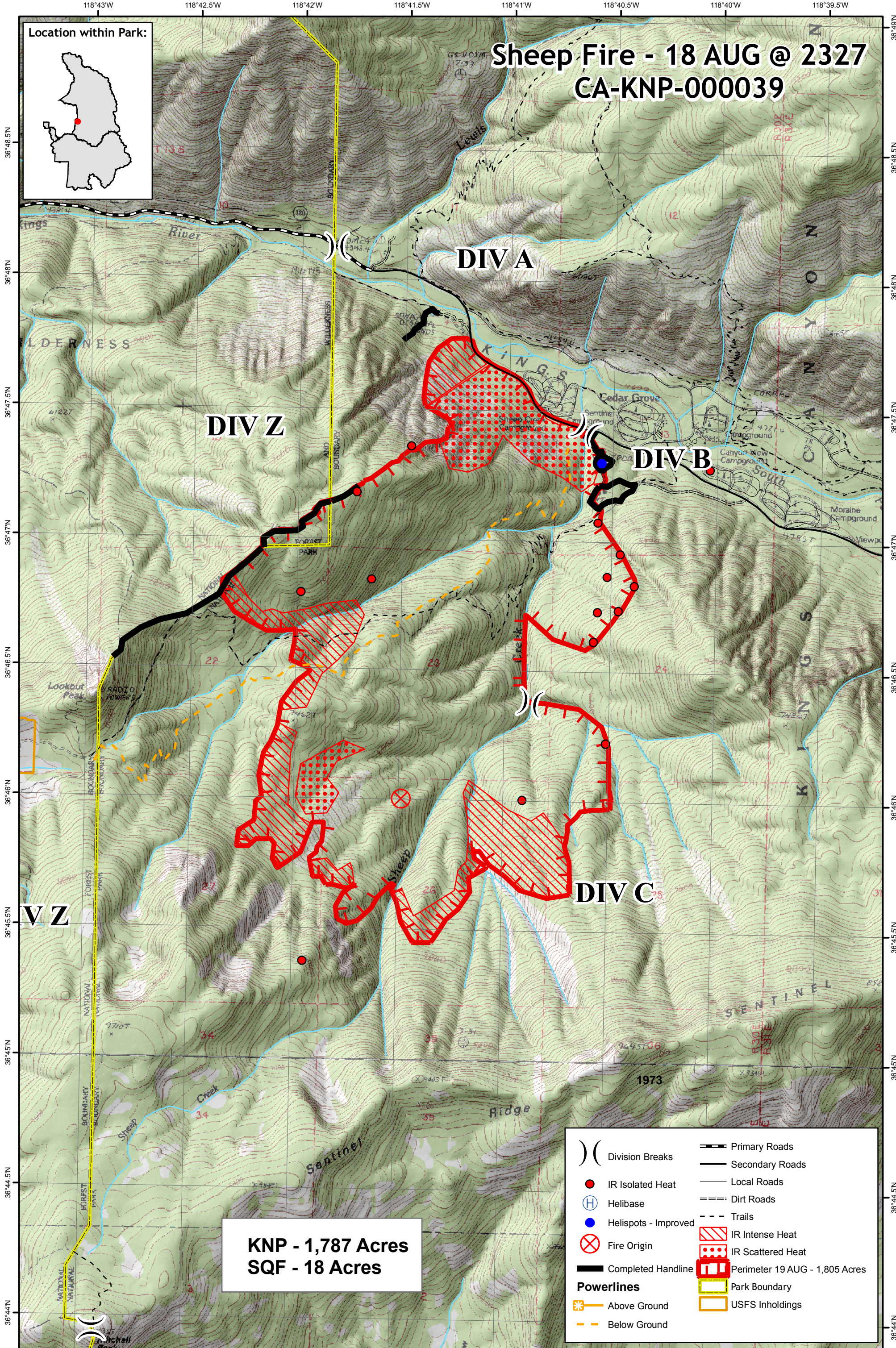
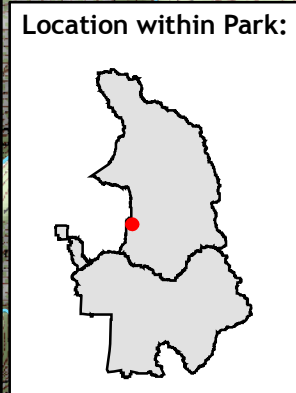


Sheep Fire - 18 AUG @ 2327

CA-KNP-000039



KNP - 1,787 Acres
SQF - 18 Acres

- | | | | |
|-----|----------------------|-------|--------------------------------|
|) (| Division Breaks | == | Primary Roads |
| ● | IR Isolated Heat | — | Secondary Roads |
| ⊕ | Helibase | — | Local Roads |
| ● | Helispots - Improved | --- | Dirt Roads |
| ⊗ | Fire Origin | - - - | Trails |
| — | Completed Handline | ▨ | IR Intense Heat |
| ⚡ | Powerlines | ▤ | IR Scattered Heat |
| ⚡ | Above Ground | ▩ | Perimeter 19 AUG - 1,805 Acres |
| ⚡ | Below Ground | ▭ | Park Boundary |
| | | ▭ | USFS Inholdings |

1:24,000

