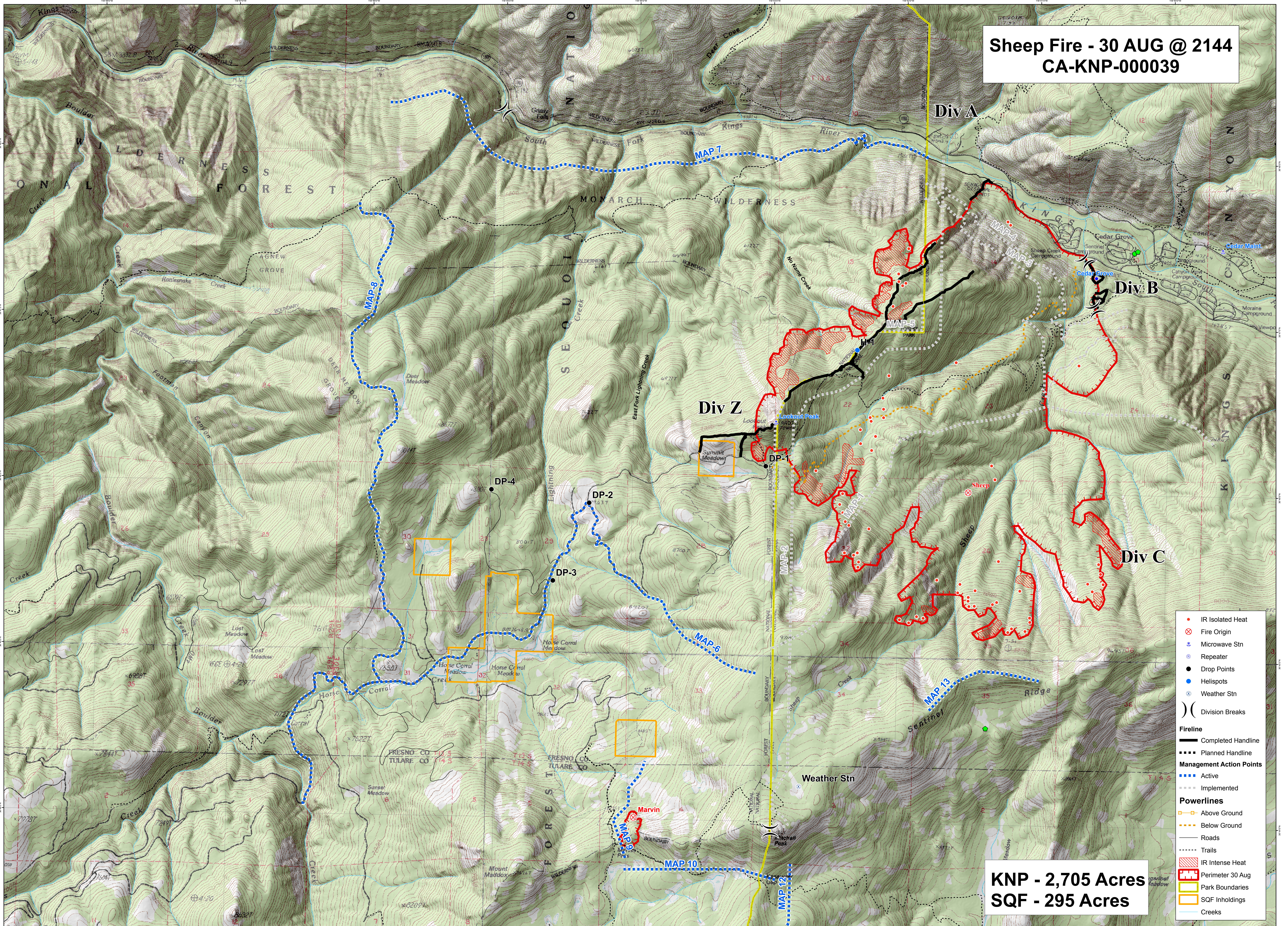


Sheep Fire - 30 AUG @ 2144 CA-KNP-000039



KNP - 2,705 Acres
SQF - 295 Acres

- IR Isolated Heat
- ⊗ Fire Origin
- ⊕ Microwave Stn
- ⊕ Repeater
- Drop Points
- ⊕ Helispots
- ⊕ Weather Stn
- ⎵ Division Breaks
- Fireline**
- Completed Handline
- ⋯ Planned Handline
- Management Action Points**
- ⋯ Active
- ⋯ Implemented
- Powerlines**
- Above Ground
- ⋯ Below Ground
- Roads
- Trails
- ⊕ IR Intense Heat
- ⊕ Perimeter 30 Aug
- ⊕ Park Boundaries
- ⊕ SQF Inholdings
- Creeks