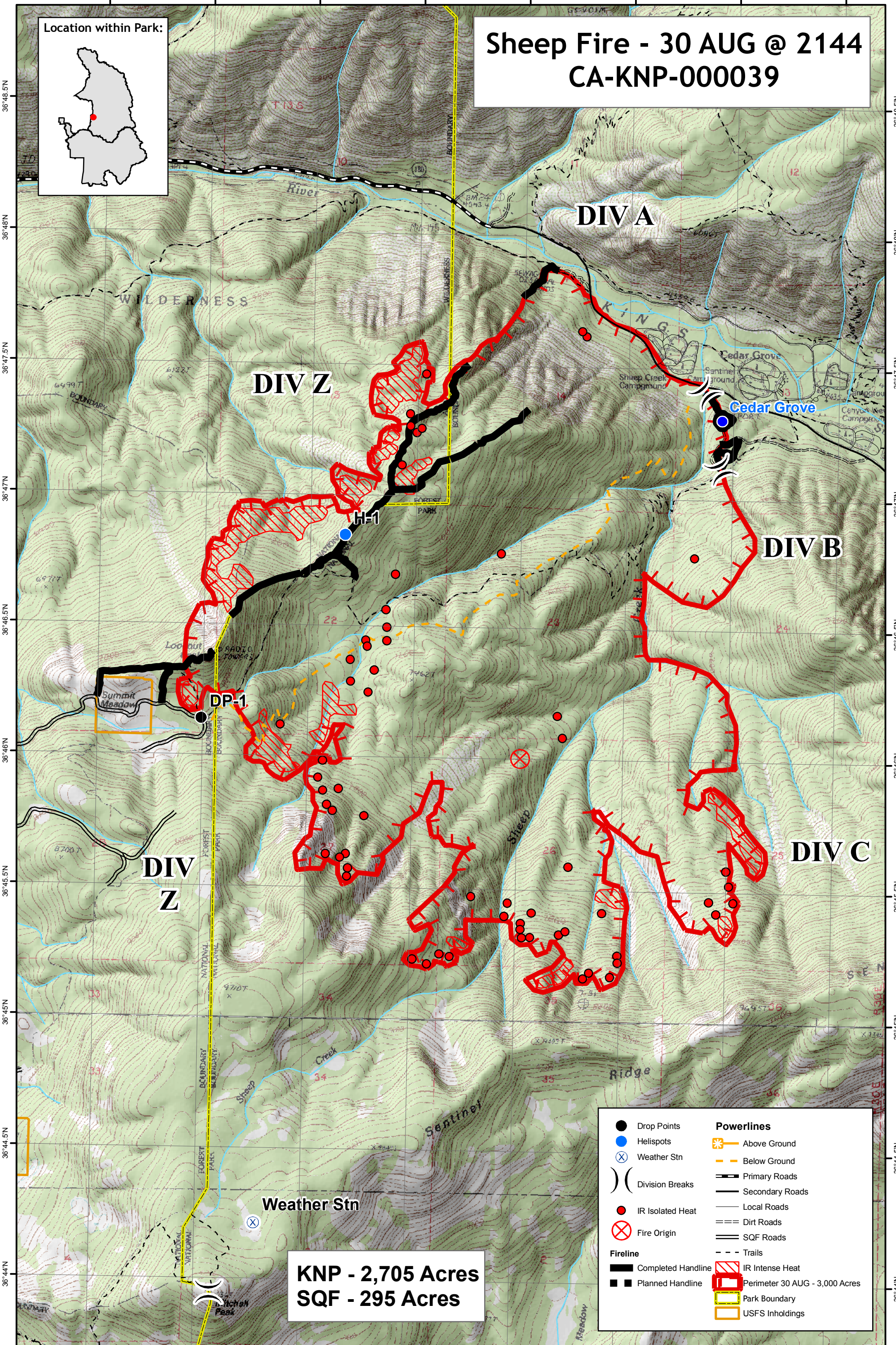
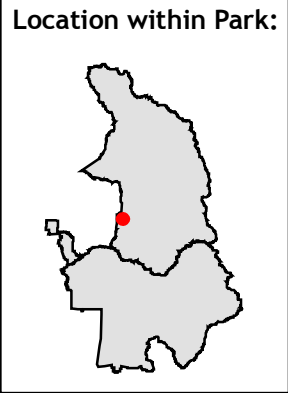


Sheep Fire - 30 AUG @ 2144 CA-KNP-000039



KNP - 2,705 Acres
SQF - 295 Acres

- | | |
|----------------------|----------------------------------|
| ● Drop Points | ⚡ Above Ground Powerlines |
| ● Helispots | ⚡ Below Ground Powerlines |
| ⊗ Weather Stn | ▬ Primary Roads |
|) (Division Breaks | ▬ Secondary Roads |
| ● IR Isolated Heat | ▬ Local Roads |
| ⊗ Fire Origin | ▬ Dirt Roads |
| ▬ Fireline | ▬ SQF Roads |
| ▬ Completed Handline | ▬ Trails |
| ▬ Planned Handline | ▬ IR Intense Heat |
| | ▬ Perimeter 30 AUG - 3,000 Acres |
| | ▬ Park Boundary |
| | ▬ USFS Inholdings |

1:24,000

