

# Sheep Fire - 30 AUG @ 2144

## CA-KNP-000039

Fire Origin

**Powerlines**

- Above Ground
- Below Ground

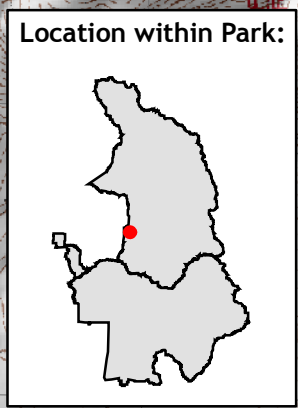
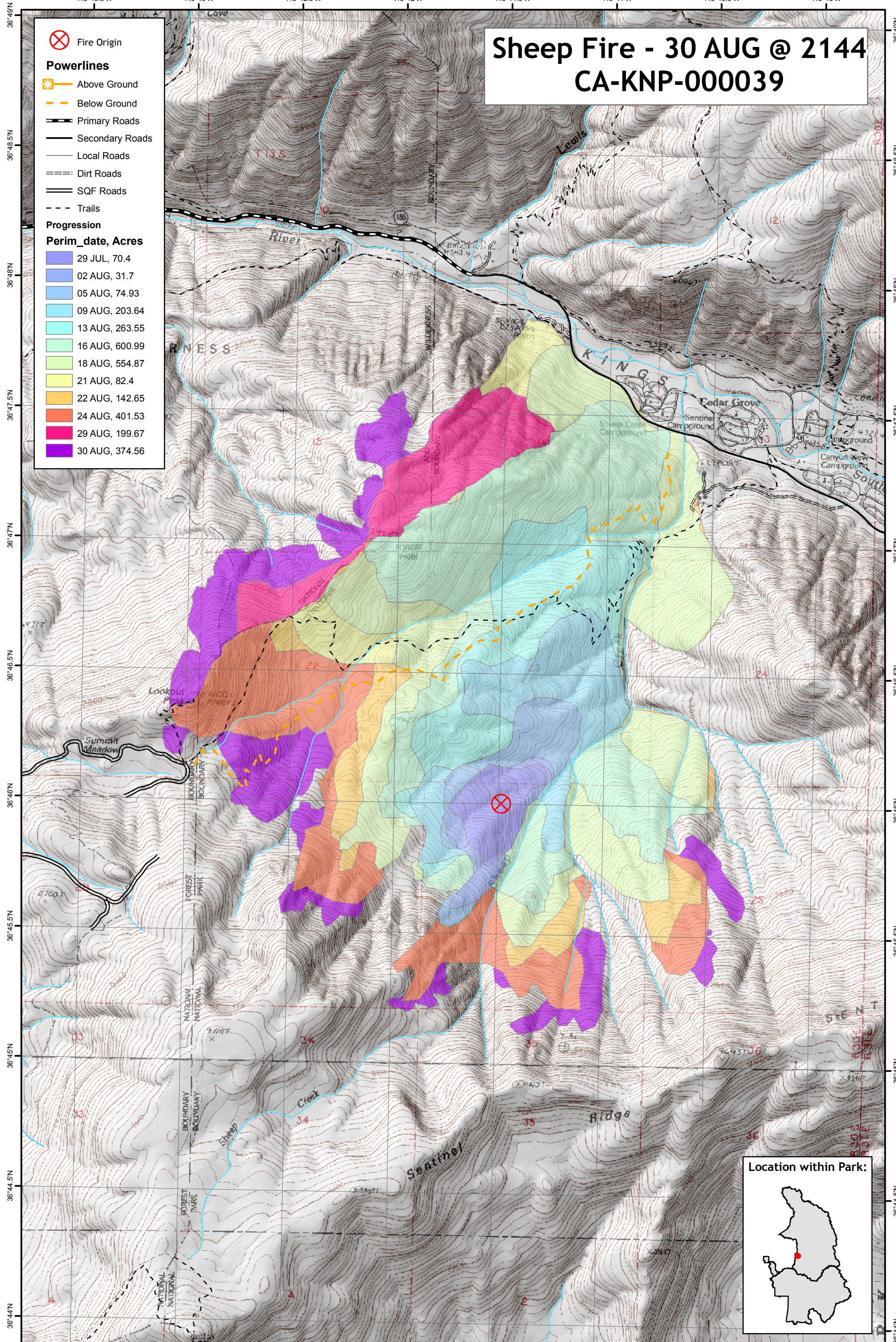
**Roads**

- Primary Roads
- Secondary Roads
- Local Roads
- Dirt Roads
- SQF Roads
- Trails

**Progression**

**Perim\_date, Acres**

- 29 JUL, 70.4
- 02 AUG, 31.7
- 05 AUG, 74.93
- 09 AUG, 203.64
- 13 AUG, 263.55
- 16 AUG, 600.99
- 18 AUG, 554.87
- 21 AUG, 82.4
- 22 AUG, 142.65
- 24 AUG, 401.53
- 29 AUG, 199.67
- 30 AUG, 374.56



1:24,000

