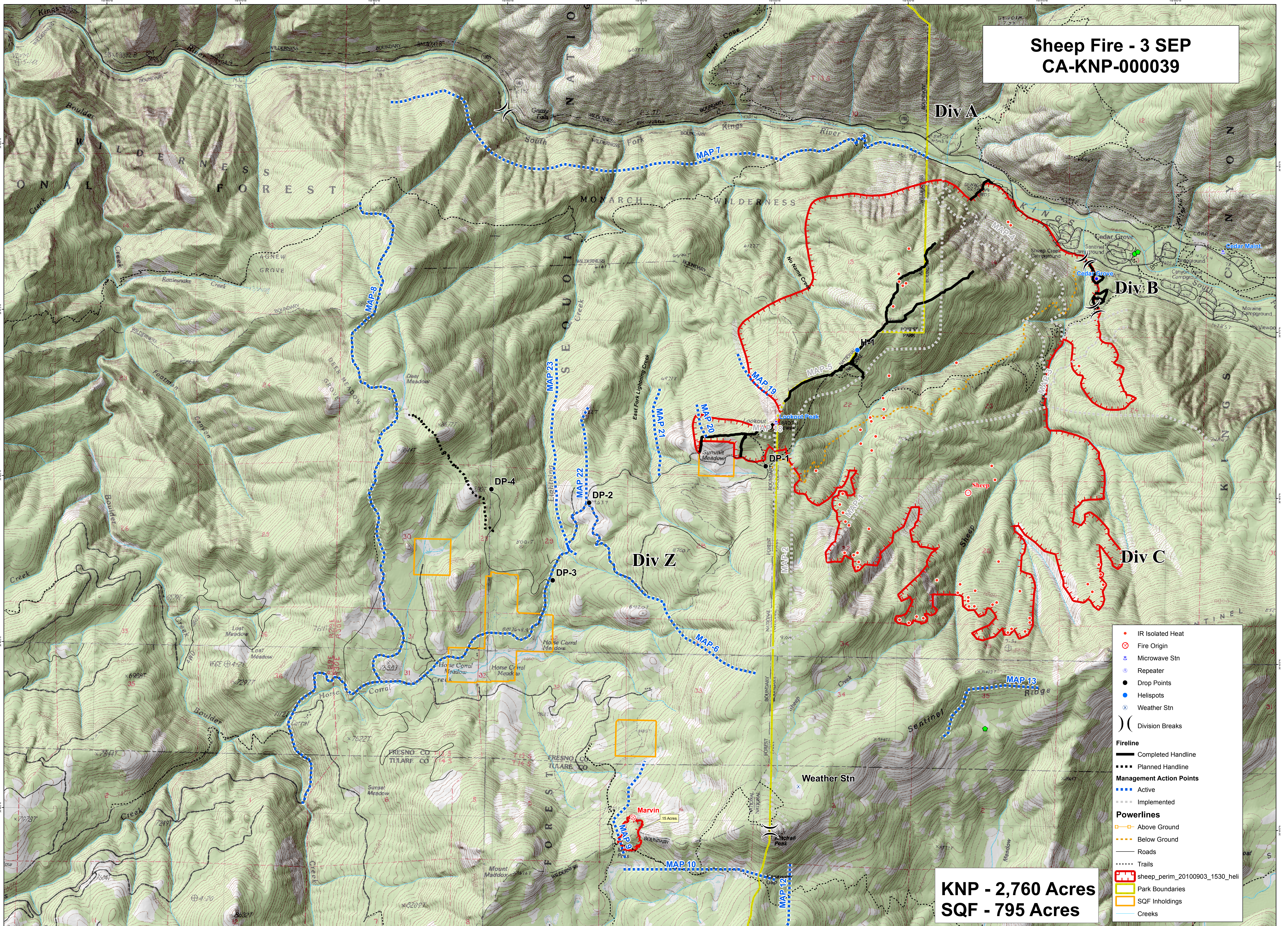


# Sheep Fire - 3 SEP CA-KNP-000039



**KNP - 2,760 Acres**  
**SQF - 795 Acres**

- IR Isolated Heat
  - ⊗ Fire Origin
  - ⊕ Microwave Stn
  - ⊕ Repeater
  - Drop Points
  - Helispots
  - ⊗ Weather Stn
  - ) ( Division Breaks
- Fireline**
- Completed Handline
  - Planned Handline
- Management Action Points**
- Active
  - Implemented
- Powerlines**
- Above Ground
  - Below Ground
  - Roads
  - Trails
  - ⊗ sheep\_perim\_20100903\_1530\_heli
  - Park Boundaries
  - SQF Inholdings
  - Creeks

