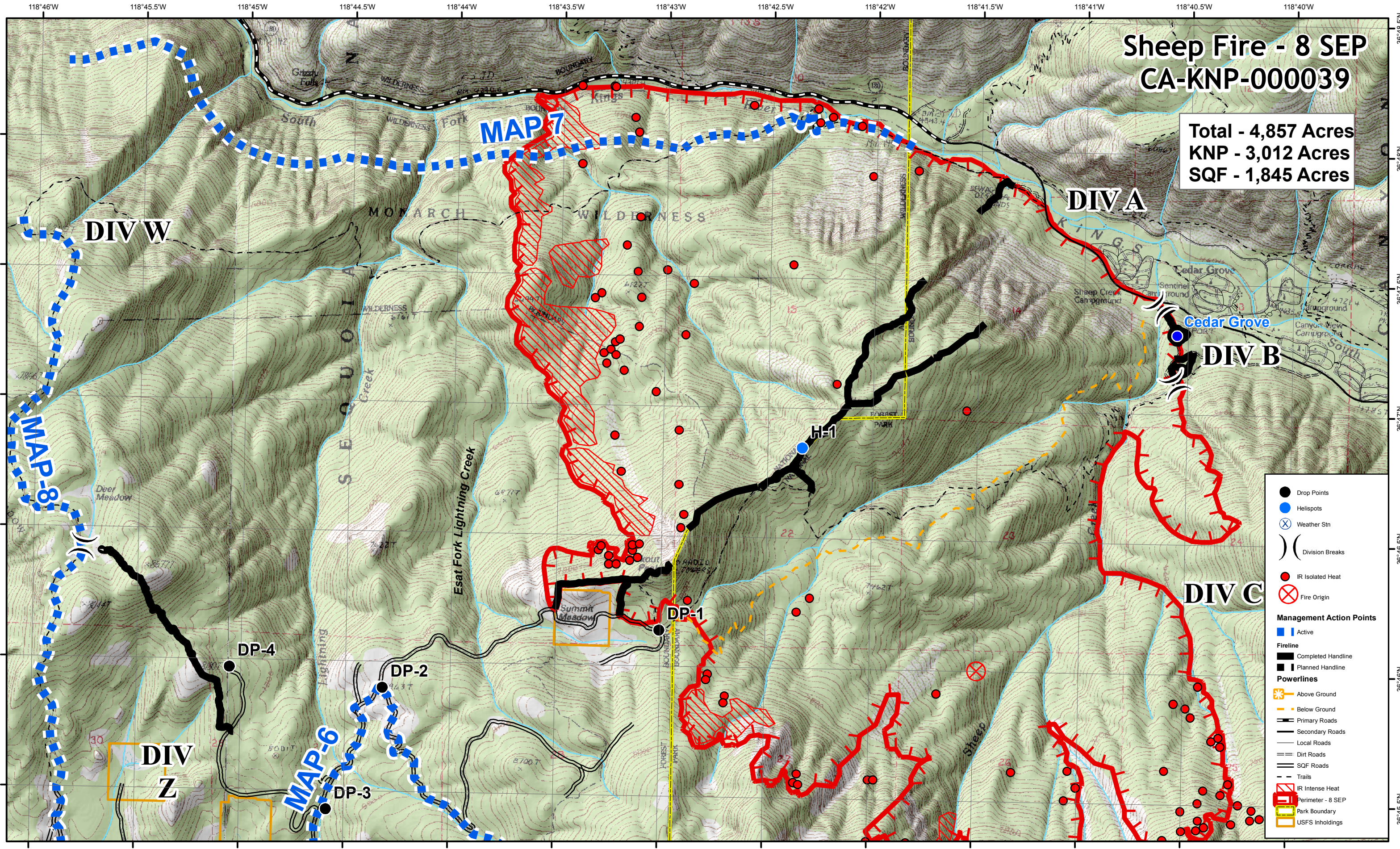


# Sheep Fire - 8 SEP CA-KNP-000039

Total - 4,857 Acres  
KNP - 3,012 Acres  
SQF - 1,845 Acres



|                                 |                    |
|---------------------------------|--------------------|
| ●                               | Drop Points        |
| ●                               | Helispots          |
| ⊗                               | Weather Stn        |
| ) (                             | Division Breaks    |
| ●                               | IR Isolated Heat   |
| ⊗                               | Fire Origin        |
| <b>Management Action Points</b> |                    |
| ■                               | Active             |
| <b>Fireline</b>                 |                    |
| ▬                               | Completed Handline |
| ▬                               | Planned Handline   |
| <b>Powerlines</b>               |                    |
| —                               | Above Ground       |
| —                               | Below Ground       |
| ▬                               | Primary Roads      |
| ▬                               | Secondary Roads    |
| ▬                               | Local Roads        |
| ▬                               | Dirt Roads         |
| ▬                               | SQF Roads          |
| ▬                               | Trails             |
| ▬                               | IR Intense Heat    |
| ▬                               | Perimeter - 8 SEP  |
| ▬                               | Park Boundary      |
| ▬                               | USFS Inholdings    |