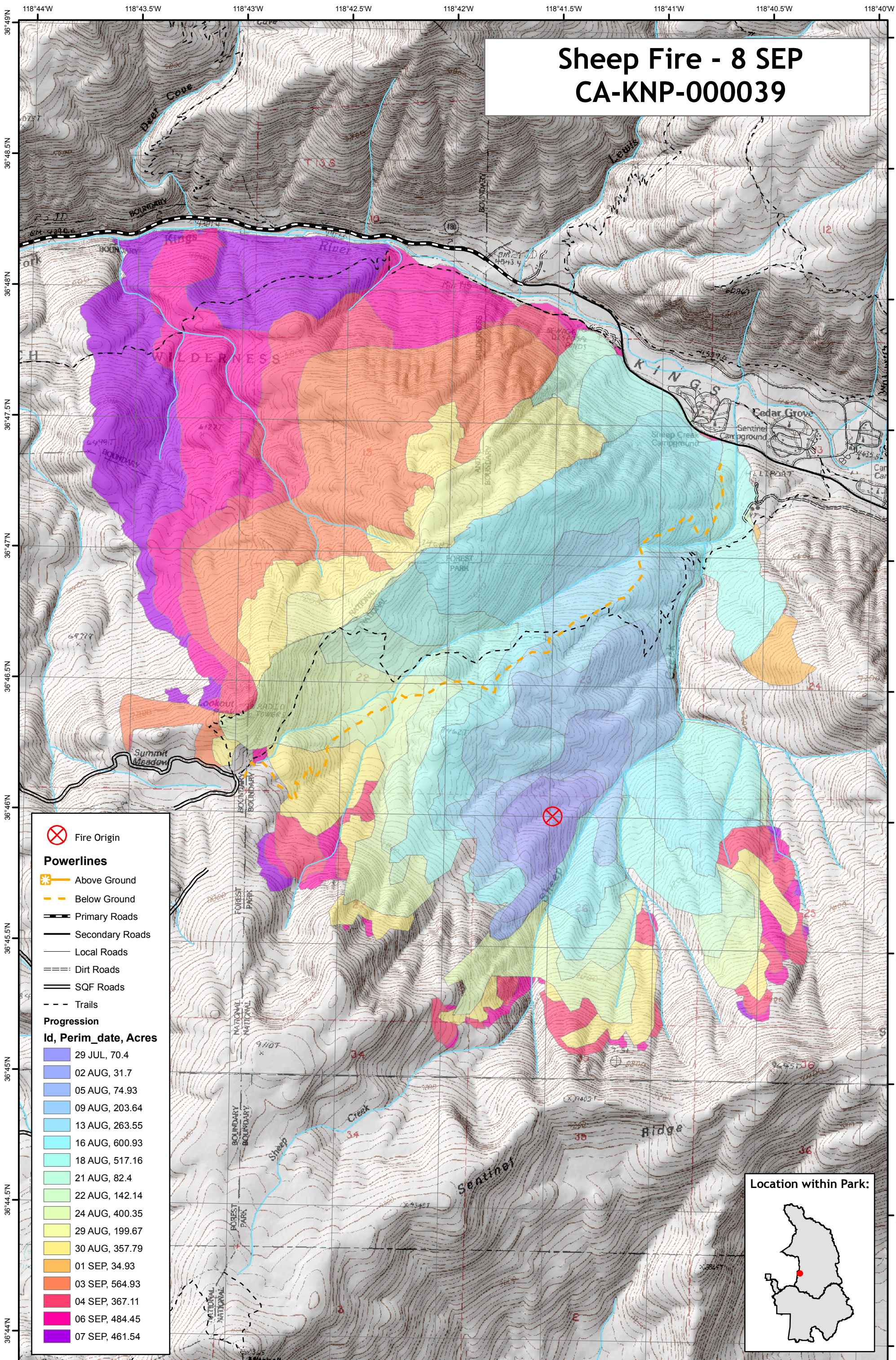


# Sheep Fire - 8 SEP CA-KNP-000039



Fire Origin

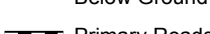
**Powerlines**



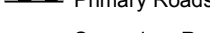
Above Ground



Below Ground



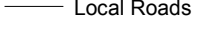
Primary Roads



Secondary Roads



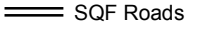
Local Roads



Dirt Roads



SQF Roads



Trails

**Progression**

**Id, Perim\_date, Acres**

29 JUL, 70.4

02 AUG, 31.7

05 AUG, 74.93

09 AUG, 203.64

13 AUG, 263.55

16 AUG, 600.93

18 AUG, 517.16

21 AUG, 82.4

22 AUG, 142.14

24 AUG, 400.35

29 AUG, 199.67

30 AUG, 357.79

01 SEP, 34.93

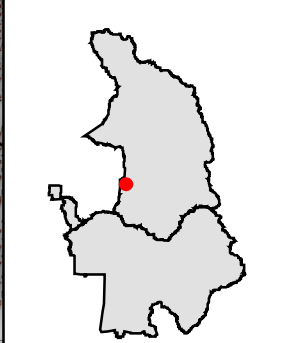
03 SEP, 564.93

04 SEP, 367.11

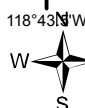
06 SEP, 484.45

07 SEP, 461.54

**Location within Park:**



1:24,000



Map by NPS(kf), 9/9/2010 @ 1630