

118°48'0"W

118°47'0"W

118°46'0"W

118°45'0"W

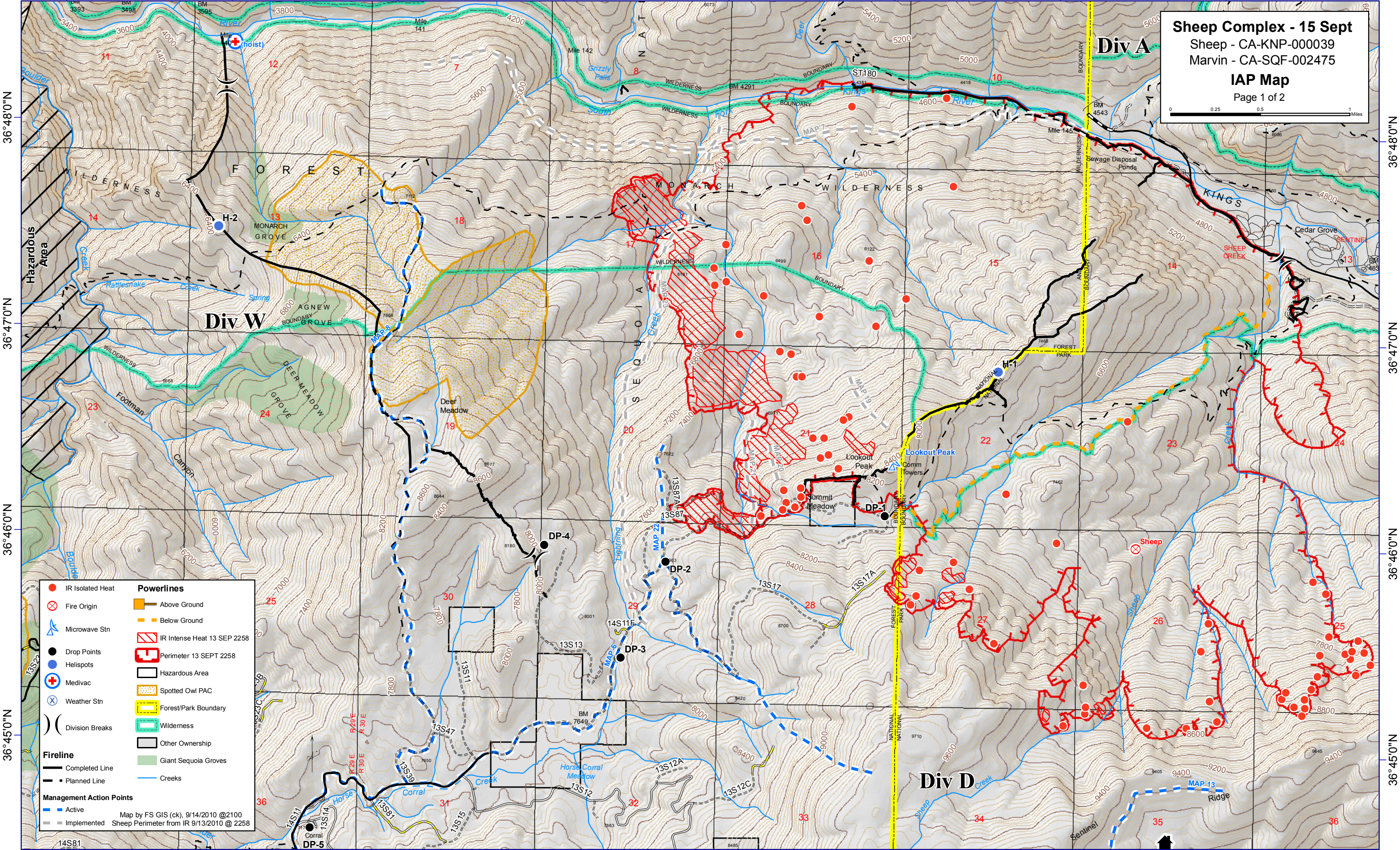
118°44'0"W

118°43'0"W

118°42'0"W

118°41'0"W

Sheep Complex - 15 Sept
 Sheep - CA-KNP-000039
 Marvin - CA-SQF-002475
IAP Map
 Page 1 of 2



	IR Isolated Heat		Powerlines
	Fire Origin		Above Ground
	Microwave Stn		Below Ground
	Drop Points		IR Intense Heat 13 SEP 2258
	Helispots		Perimeter 13 SEPT 2258
	Medivac		Hazardous Area
	Weather Stn		Spotted Owl PAC
	Division Breaks		Forest/Park Boundary
	Completed Line		Wilderness
	Planned Line		Giant Sequoia Groves
	Active		Creeks
	Implemented		

Map by FS GIS (ck), 9/14/2010 @2100
 Sheep Perimeter from IR 9/13/2010 @ 2258

118°48'0"W

118°47'0"W

118°46'0"W

118°45'0"W

118°44'0"W

118°43'0"W

118°42'0"W

118°41'0"W

118°40'0"W

36°48'0"N

36°47'0"N

36°46'0"N

36°45'0"N

36°48'0"N

36°47'0"N

36°46'0"N

36°45'0"N