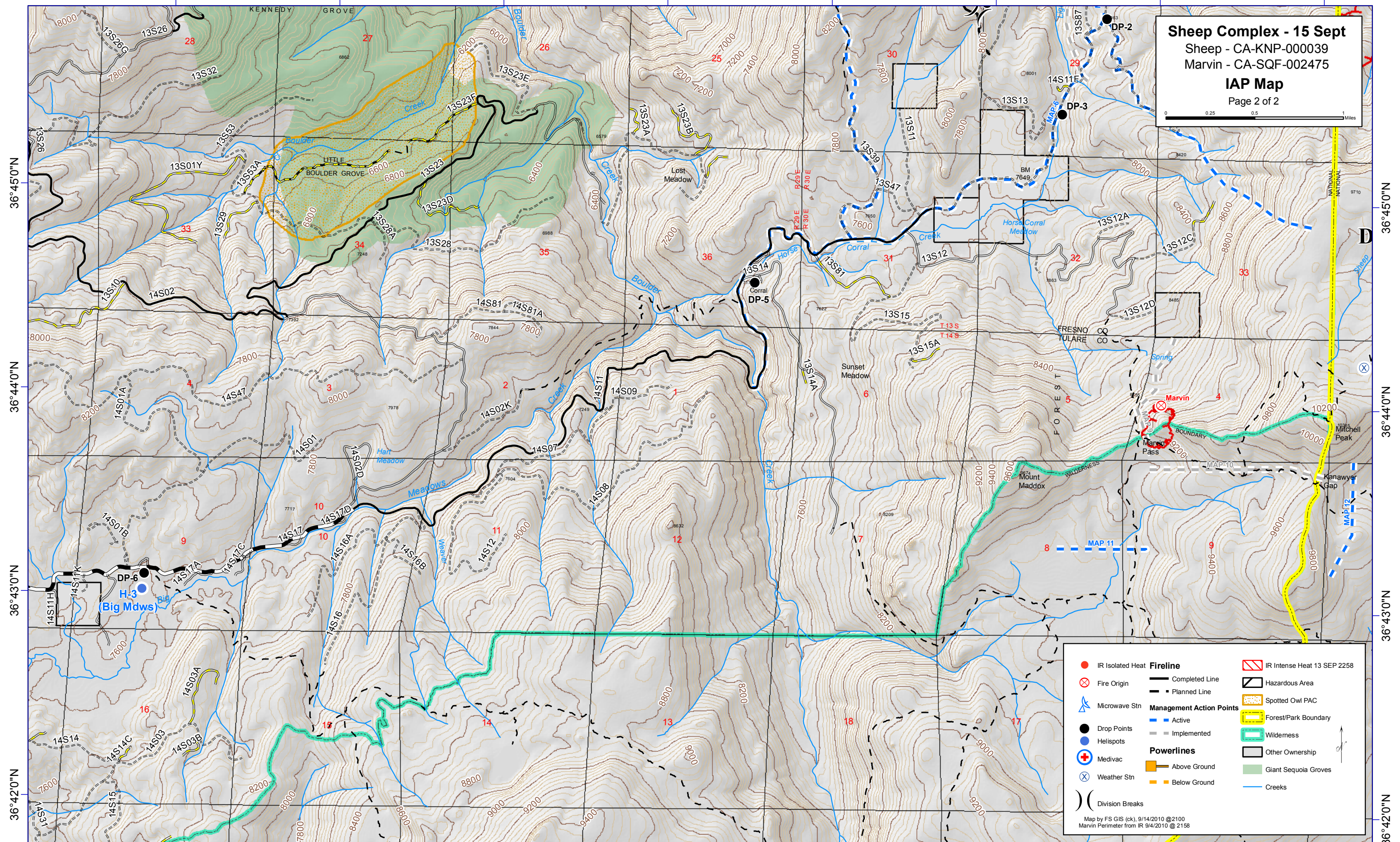


118°50'0"W 118°49'0"W 118°48'0"W 118°47'0"W 118°46'0"W 118°45'0"W 118°44'0"W 118°43'0"W

**Sheep Complex - 15 Sept**  
 Sheep - CA-KNP-000039  
 Marvin - CA-SQF-002475  
**IAP Map**  
 Page 2 of 2



	IR Isolated Heat		Completed Line		IR Intense Heat 13 SEP 2258
	Fire Origin		Planned Line		Hazardous Area
	Microwave Stn		Active Management Action Points		Spotted Owl PAC
	Drop Points		Implemented Management Action Points		Forest/Park Boundary
	Helispots		Wilderness		Wilderness
	Medivac		Powerlines		Other Ownership
	Weather Stn		Above Ground Powerlines		Giant Sequoia Groves
	Weather Stn		Below Ground Powerlines		Creeks
	Division Breaks				

Map by FS GIS (ck), 9/14/2010 @ 2100  
 Marvin Perimeter from IR 9/4/2010 @ 2158

118°50'0"W 118°49'0"W 118°48'0"W 118°47'0"W 118°46'0"W 118°45'0"W 118°44'0"W 118°43'0"W

36°45'0"N  
36°44'0"N  
36°43'0"N  
36°42'0"N

36°45'0"N  
36°44'0"N  
36°43'0"N  
36°42'0"N