

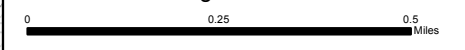
118°47'0"W

118°46'0"W

118°45'0"W

# Div A

**Sheep Complex - 19 Sept**  
 Sheep - CA-KNP-000039  
 Marvin - CA-SQF-002475  
**IAP Map**  
 Page 2 of 2



36°48'0"N

36°48'0"N

# F O R E S T

36°47'0"N

36°47'0"N

# Div W

36°46'0"N

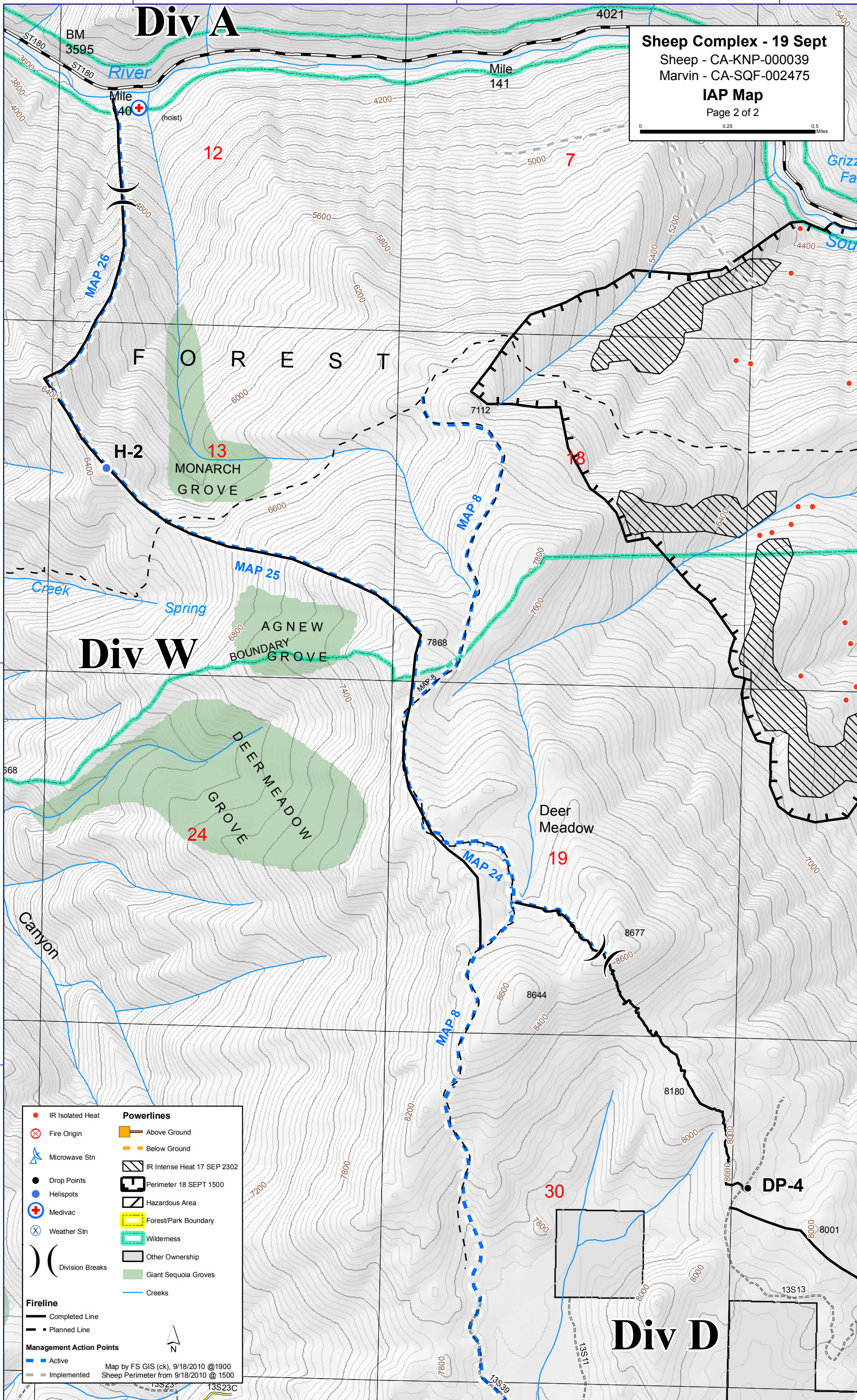
36°46'0"N

# Div D

118°47'0"W

118°46'0"W

118°45'0"W



● IR Isolated Heat	<b>Powerlines</b>
⊗ Fire Origin	▬ Above Ground
⊕ Microwave Stn	▬ Below Ground
● Drop Points	▨ IR Intense Heat 17 SEP 2302
● Helispots	▨ Perimeter 18 SEPT 1500
⊕ Medivac	▨ Hazardous Area
⊗ Weather Stn	▨ Forest/Park Boundary
) ( Division Breaks	▨ Wilderness
	▨ Other Ownership
	▨ Giant Sequoia Groves
	▬ Creeks

<b>Fireline</b>
▬ Completed Line
- - - Planned Line
<b>Management Action Points</b>
▬ Active
▬ Implemented

Map by FS GIS (ck), 9/18/2010 @1900  
 Sheep Perimeter from 9/18/2010 @ 1500