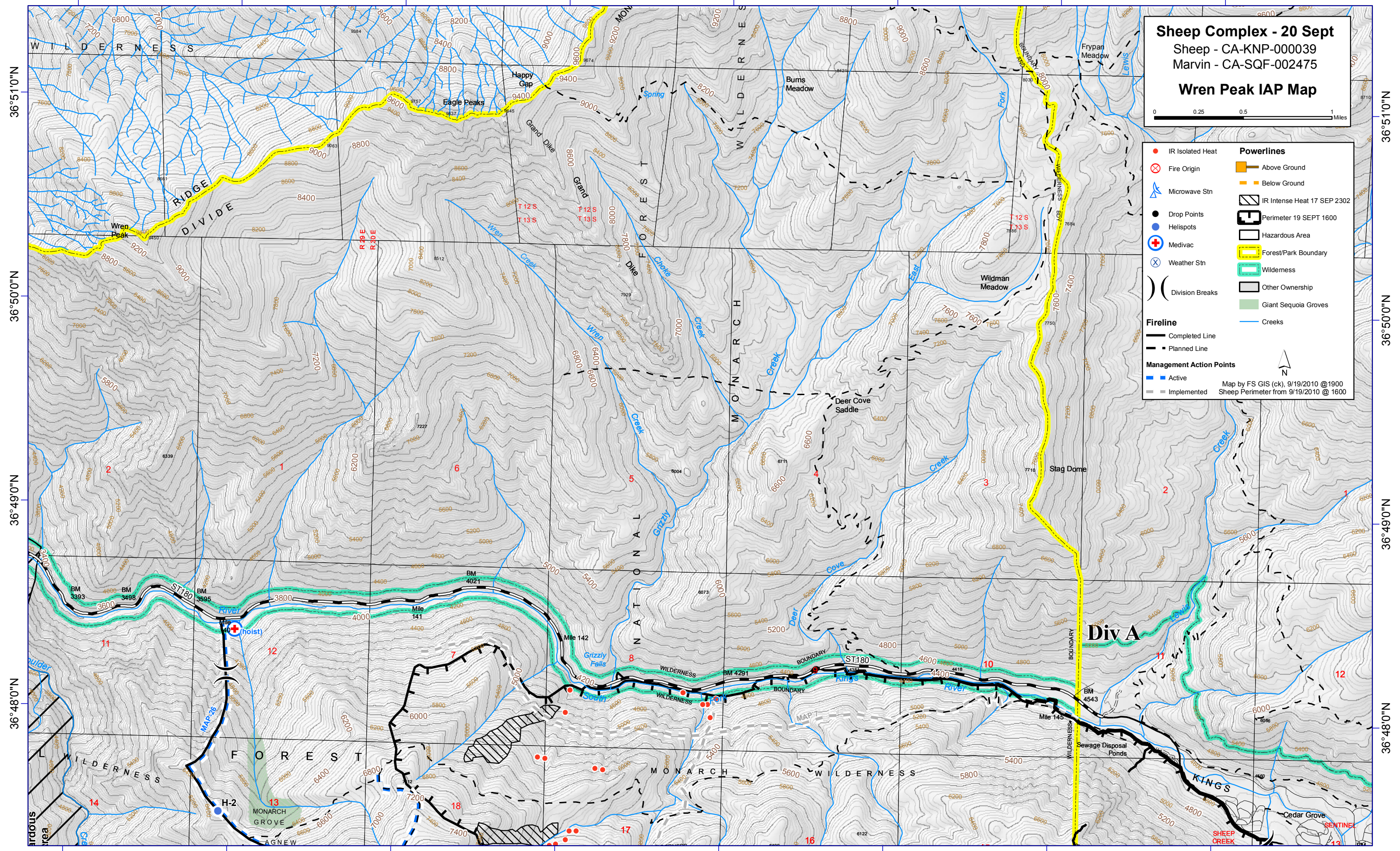


118°48'0"W 118°47'0"W 118°46'0"W 118°45'0"W 118°44'0"W 118°43'0"W 118°42'0"W 118°41'0"W



**Sheep Complex - 20 Sept**  
Sheep - CA-KNP-00039  
Marvin - CA-SQF-002475  
**Wren Peak IAP Map**

0 0.25 0.5 1 Miles

IR Isolated Heat	Powerlines
Fire Origin	Above Ground
Microwave Stn	Below Ground
Drop Points	IR Intense Heat 17 SEP 2302
Helispots	Perimeter 19 SEPT 1600
Medivac	Hazardous Area
Weather Stn	Forest/Park Boundary
Division Breaks	Wilderness
	Other Ownership
	Giant Sequoia Groves
	Creeks
<b>Fireline</b>	
Completed Line	
Planned Line	
<b>Management Action Points</b>	
Active	
Implemented	

Map by FS GIS (ck), 9/19/2010 @1900  
Sheep Perimeter from 9/19/2010 @1600

118°48'0"W 118°47'0"W 118°46'0"W 118°45'0"W 118°44'0"W 118°43'0"W 118°42'0"W 118°41'0"W

36°51'0"N  
36°50'0"N  
36°49'0"N  
36°48'0"N

36°51'0"N  
36°50'0"N  
36°49'0"N  
36°48'0"N