

118°48'0"W

118°47'0"W

118°46'0"W

118°45'0"W

118°44'0"W

118°43'0"W

118°42'0"W

118°41'0"W

36°51'0"N

36°50'0"N

36°49'0"N

36°48'0"N

36°51'0"N

36°50'0"N

36°49'0"N

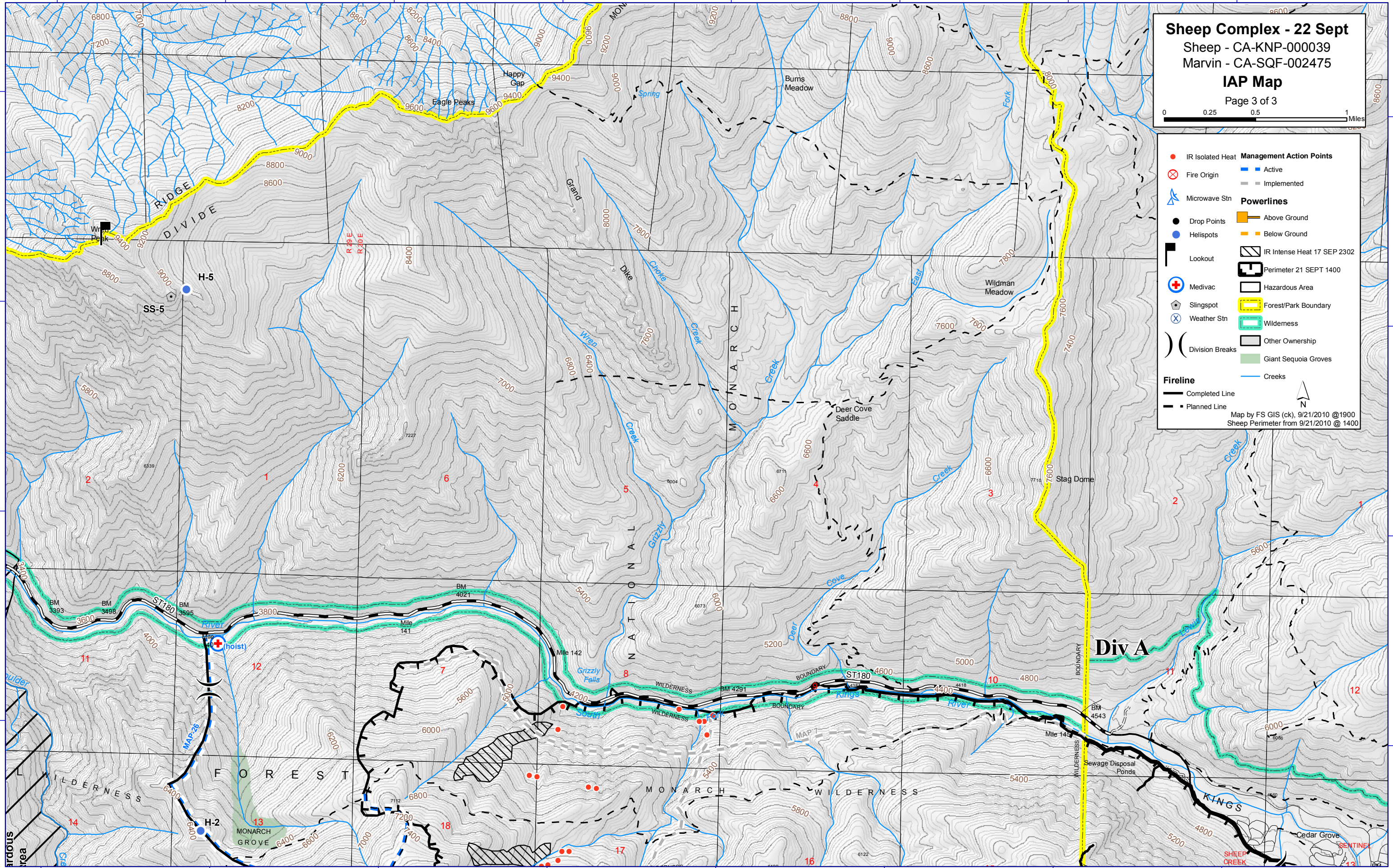
36°48'0"N

Sheep Complex - 22 Sept
 Sheep - CA-KNP-000039
 Marvin - CA-SQF-002475
IAP Map
 Page 3 of 3

● IR Isolated Heat	Management Action Points
⊗ Fire Origin	■ Active
⚡ Microwave Stn	▬ Implemented
● Drop Points	▬ Above Ground
● Helispots	▬ Below Ground
⬛ Lookout	▨ IR Intense Heat 17 SEP 2302
⊕ Medivac	▭ Perimeter 21 SEPT 1400
⚡ Slingspot	▭ Hazardous Area
⊗ Weather Stn	▭ Forest/Park Boundary
⌋ Division Breaks	▭ Wilderness
	▭ Other Ownership
	▭ Giant Sequoia Groves
	▬ Creeks

Fireline
 — Completed Line
 - - - Planned Line

Map by FS GIS (ck), 9/21/2010 @1900
 Sheep Perimeter from 9/21/2010 @ 1400



118°48'0"W

118°47'0"W

118°46'0"W

118°45'0"W

118°44'0"W

118°43'0"W

118°42'0"W

118°41'0"W