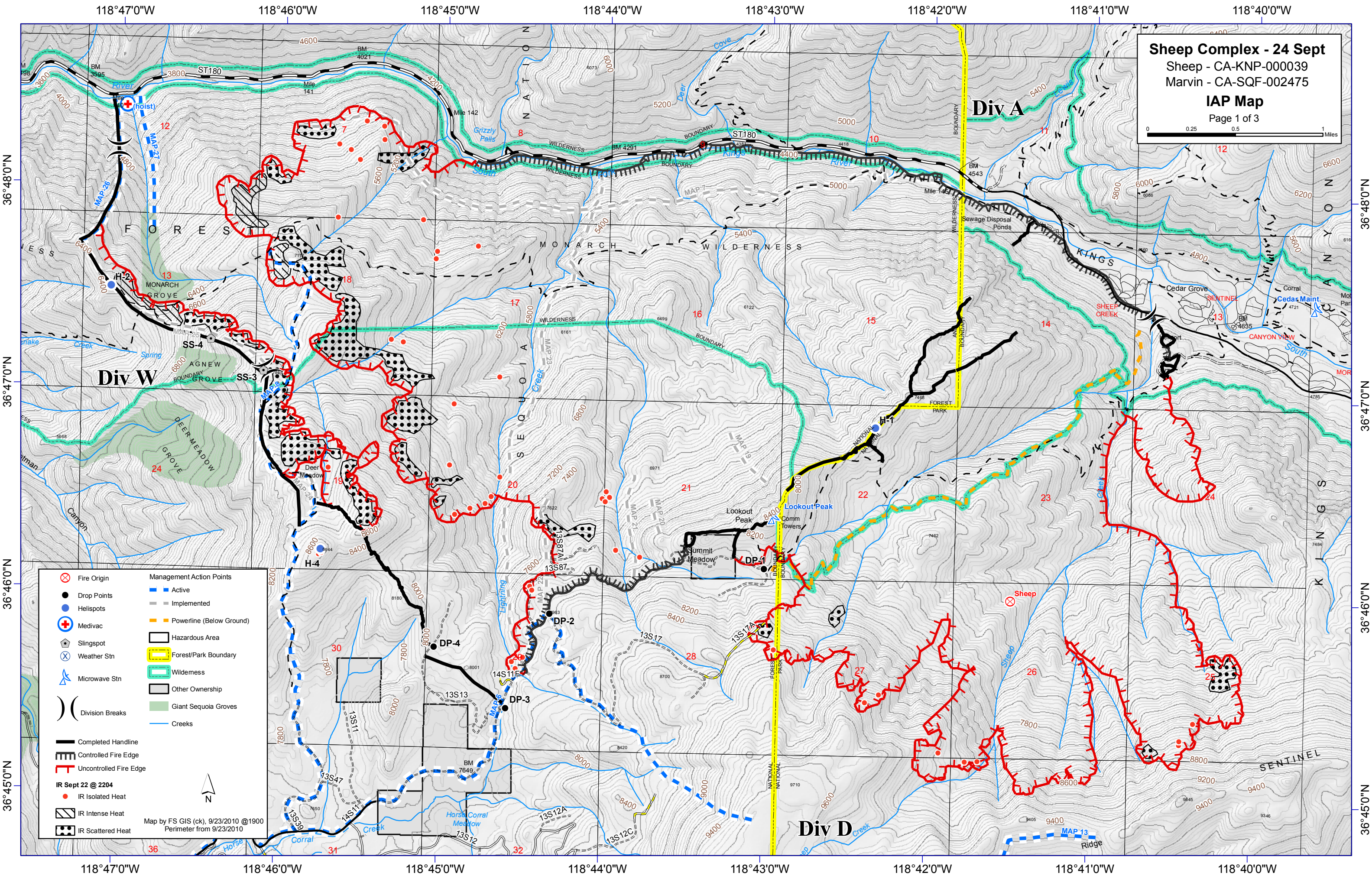


Sheep Complex - 24 Sept
 Sheep - CA-KNP-000039
 Marvin - CA-SQF-002475
IAP Map
 Page 1 of 3



- | | |
|------------------------|--------------------------|
| Fire Origin | Management Action Points |
| Drop Points | Active |
| Helispots | Implemented |
| Medivac | Powerline (Below Ground) |
| Slingspot | Hazardous Area |
| Weather Stn | Forest/Park Boundary |
| Microwave Stn | Wilderness |
| Division Breaks | Other Ownership |
| Completed Handline | Giant Sequoia Groves |
| Controlled Fire Edge | Creeks |
| Uncontrolled Fire Edge | |
| IR Sept 22 @ 2204 | |
| IR Isolated Heat | |
| IR Intense Heat | |
| IR Scattered Heat | |

Map by FS GIS (ck), 9/23/2010 @1900
 Perimeter from 9/23/2010