

118°48'0"W 118°47'0"W 118°46'0"W 118°45'0"W 118°44'0"W 118°43'0"W 118°42'0"W 118°41'0"W

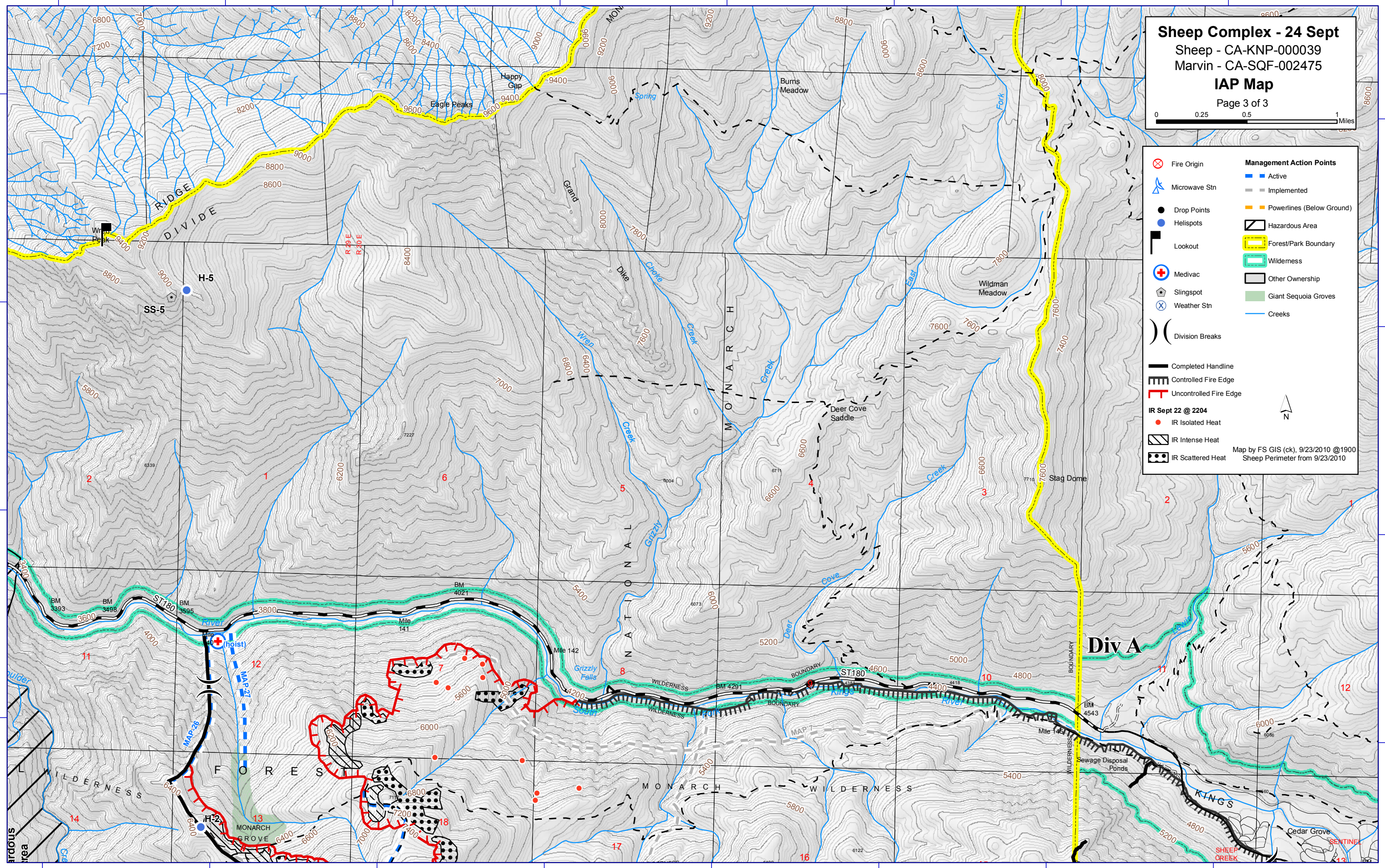
36°51'0"N
36°50'0"N
36°49'0"N
36°48'0"N

36°51'0"N
36°50'0"N
36°49'0"N
36°48'0"N

Sheep Complex - 24 Sept
 Sheep - CA-KNP-000039
 Marvin - CA-SQF-002475
IAP Map
 Page 3 of 3

Fire Origin	Management Action Points - Active
Microwave Stn	Management Action Points - Implemented
Drop Points	Powerlines (Below Ground)
Helispots	Hazardous Area
Lookout	Forest/Park Boundary
Medivac	Wilderness
Slingspot	Other Ownership
Weather Stn	Giant Sequoia Groves
Division Breaks	Creeks
Completed Handline	
Controlled Fire Edge	
Uncontrolled Fire Edge	
IR Sept 22 @ 2204	
IR Isolated Heat	
IR Intense Heat	
IR Scattered Heat	

Map by FS GIS (ck), 9/23/2010 @1900
 Sheep Perimeter from 9/23/2010



118°48'0"W 118°47'0"W 118°46'0"W 118°45'0"W 118°44'0"W 118°43'0"W 118°42'0"W 118°41'0"W