

118°48'0"W 118°47'0"W 118°46'0"W 118°45'0"W 118°44'0"W 118°43'0"W 118°42'0"W 118°41'0"W

36°51'0"N  
36°50'0"N  
36°49'0"N  
36°48'0"N

36°51'0"N  
36°50'0"N  
36°49'0"N  
36°48'0"N

**Sheep Complex - 26 Sept**  
 Sheep - CA-KNP-000039  
 Marvin - CA-SQF-002475  
**IAP Map**  
 Page 3 of 3

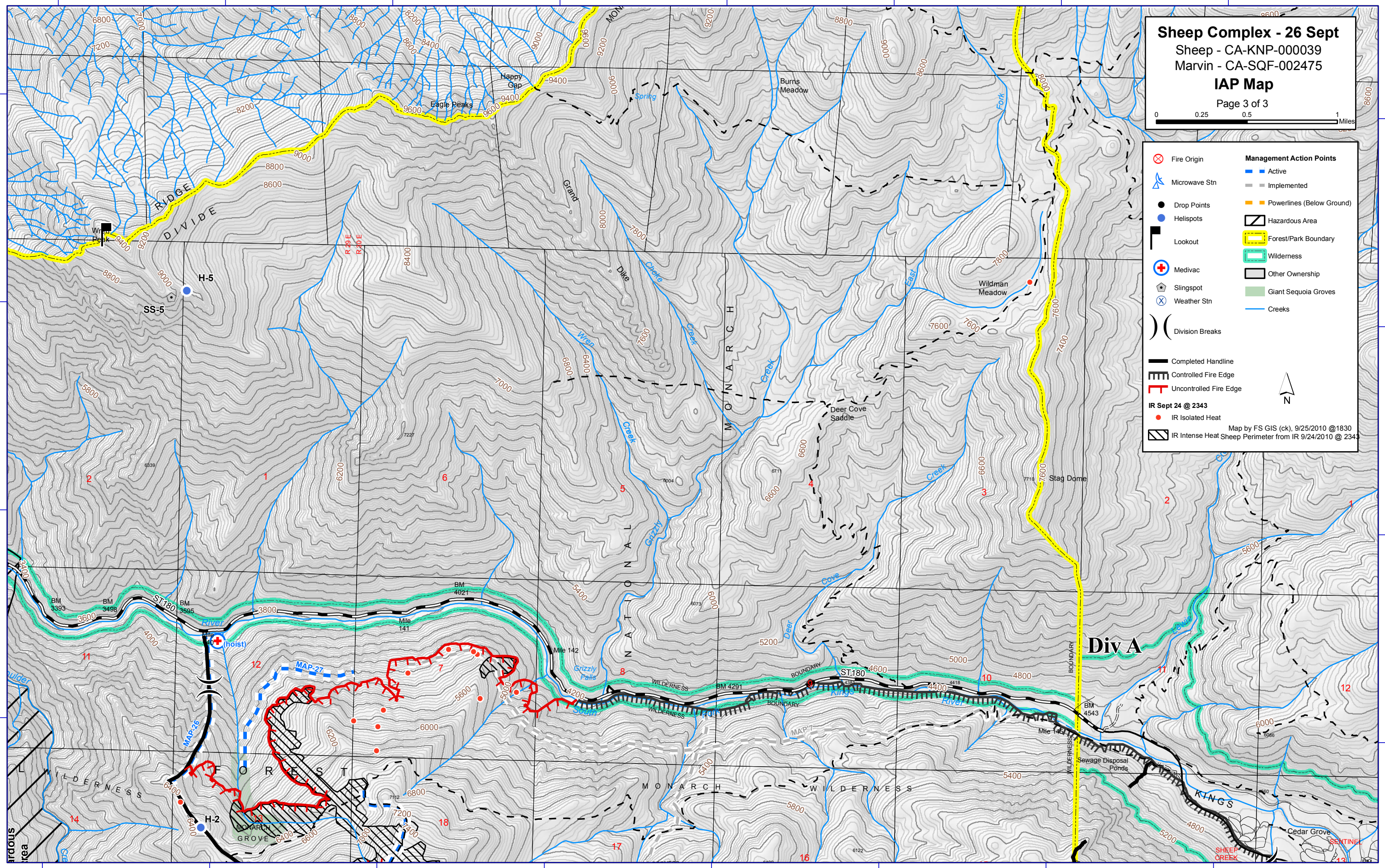
Fire Origin	Active
Microwave Stn	Implemented
Drop Points	Powerlines (Below Ground)
Helispots	Hazardous Area
Lookout	Forest/Park Boundary
Medivac	Wilderness
Slingspot	Other Ownership
Weather Stn	Giant Sequoia Groves
Division Breaks	Creeks

Completed Handline	
Controlled Fire Edge	
Uncontrolled Fire Edge	

IR Sept 24 @ 2343  
 IR Isolated Heat  
 IR Intense Heat Sheep Perimeter from IR 9/24/2010 @ 2343

Map by FS GIS (ck), 9/25/2010 @1830



118°48'0"W 118°47'0"W 118°46'0"W 118°45'0"W 118°44'0"W 118°43'0"W 118°42'0"W 118°41'0"W