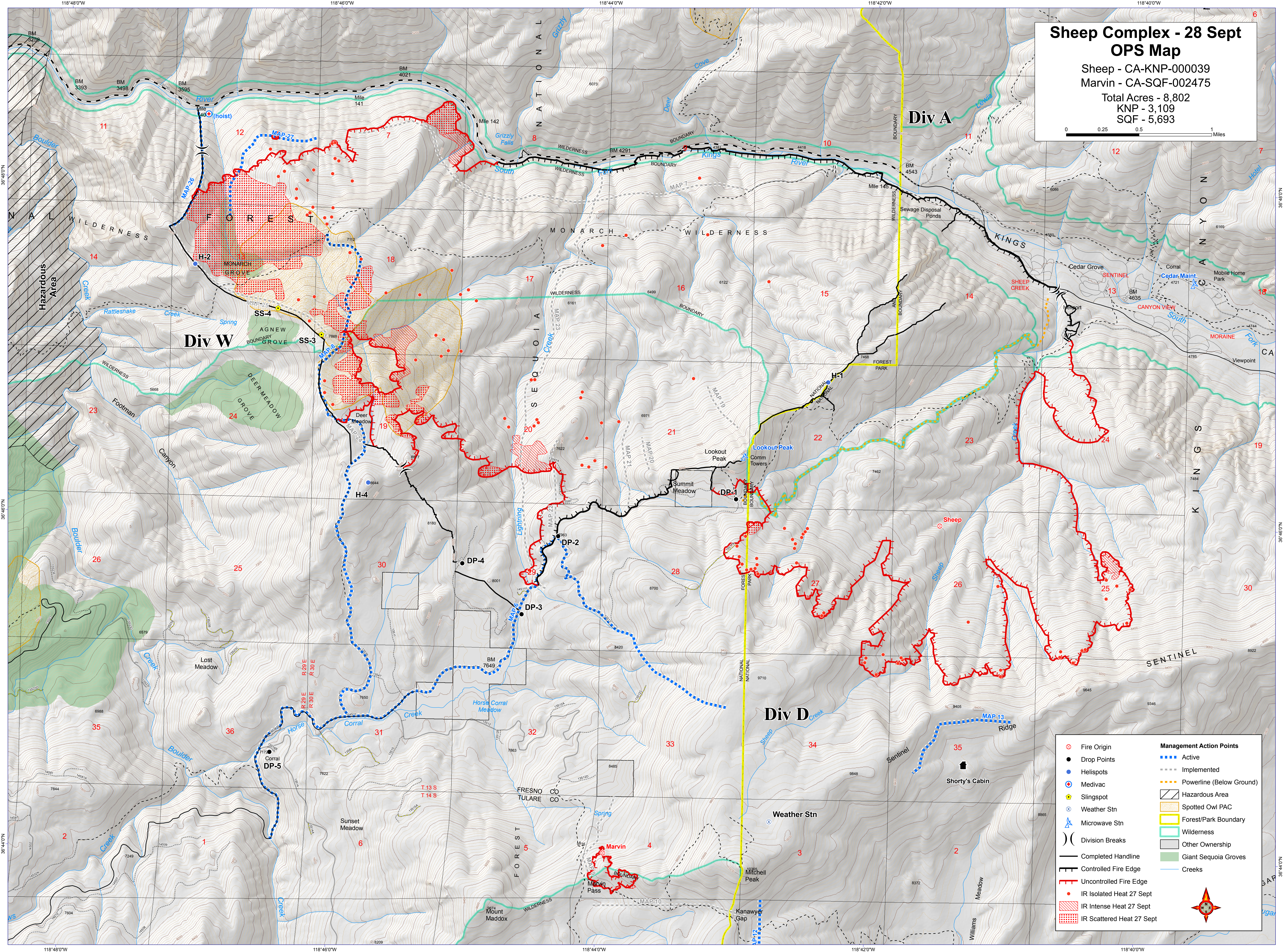
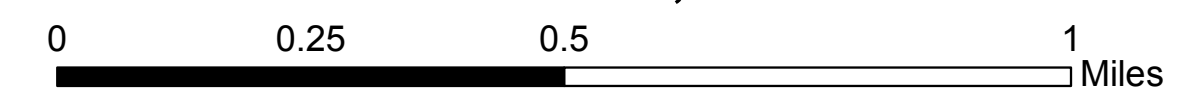


# Sheep Complex - 28 Sept OPS Map

Sheep - CA-KNP-000039  
 Marvin - CA-SQF-002475

Total Acres - 8,802  
 KNP - 3,109  
 SQF - 5,693



| Management Action Points |                          |
|--------------------------|--------------------------|
| ●                        | Active                   |
| ●                        | Implemented              |
| ●                        | Powerline (Below Ground) |
| ●                        | Hazardous Area           |
| ●                        | Spotted Owl PAC          |
| ●                        | Forest/Park Boundary     |
| ●                        | Wilderness               |
| ●                        | Other Ownership          |
| ●                        | Giant Sequoia Groves     |
| ●                        | Creeks                   |

|   |                           |
|---|---------------------------|
| ○ | Fire Origin               |
| ● | Drop Points               |
| ● | Helispots                 |
| ● | Medivac                   |
| ● | Slingspot                 |
| ● | Weather Stn               |
| ● | Microwave Stn             |
| ● | Division Breaks           |
| — | Completed Handline        |
| — | Controlled Fire Edge      |
| — | Uncontrolled Fire Edge    |
| ● | IR Isolated Heat 27 Sept  |
| ■ | IR Intense Heat 27 Sept   |
| ■ | IR Scattered Heat 27 Sept |

