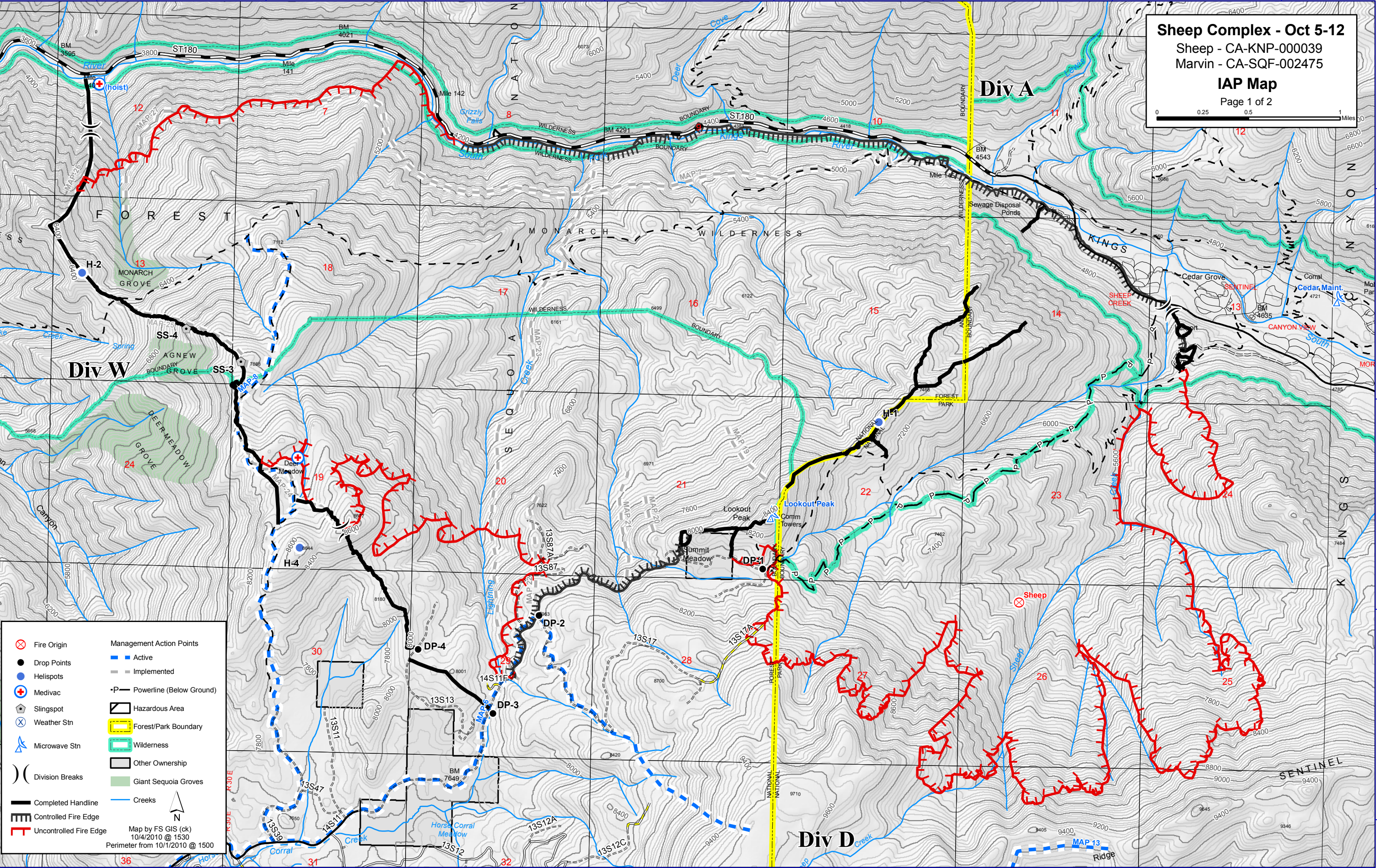
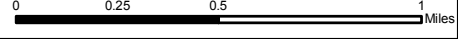


Sheep Complex - Oct 5-12
 Sheep - CA-KNP-00039
 Marvin - CA-SQF-002475
IAP Map
 Page 1 of 2



- | | |
|--------------------------|------------------------------|
| ⊗ Fire Origin | Management Action Points |
| ● Drop Points | ■ Active |
| ● Helispots | — Implemented |
| ⊕ Medivac | -P- Powerline (Below Ground) |
| ⊙ Slingspot | ⊠ Hazardous Area |
| ⊗ Weather Stn | ▭ Forest/Park Boundary |
| ⊕ Microwave Stn | ▭ Wilderness |
|) Division Breaks | ▭ Other Ownership |
| — Completed Handline | ▭ Giant Sequoia Groves |
| ▭ Controlled Fire Edge | — Creeks |
| ▭ Uncontrolled Fire Edge | |

Map by FS GIS (ck)
 10/4/2010 @ 1530
 Perimeter from 10/1/2010 @ 1500