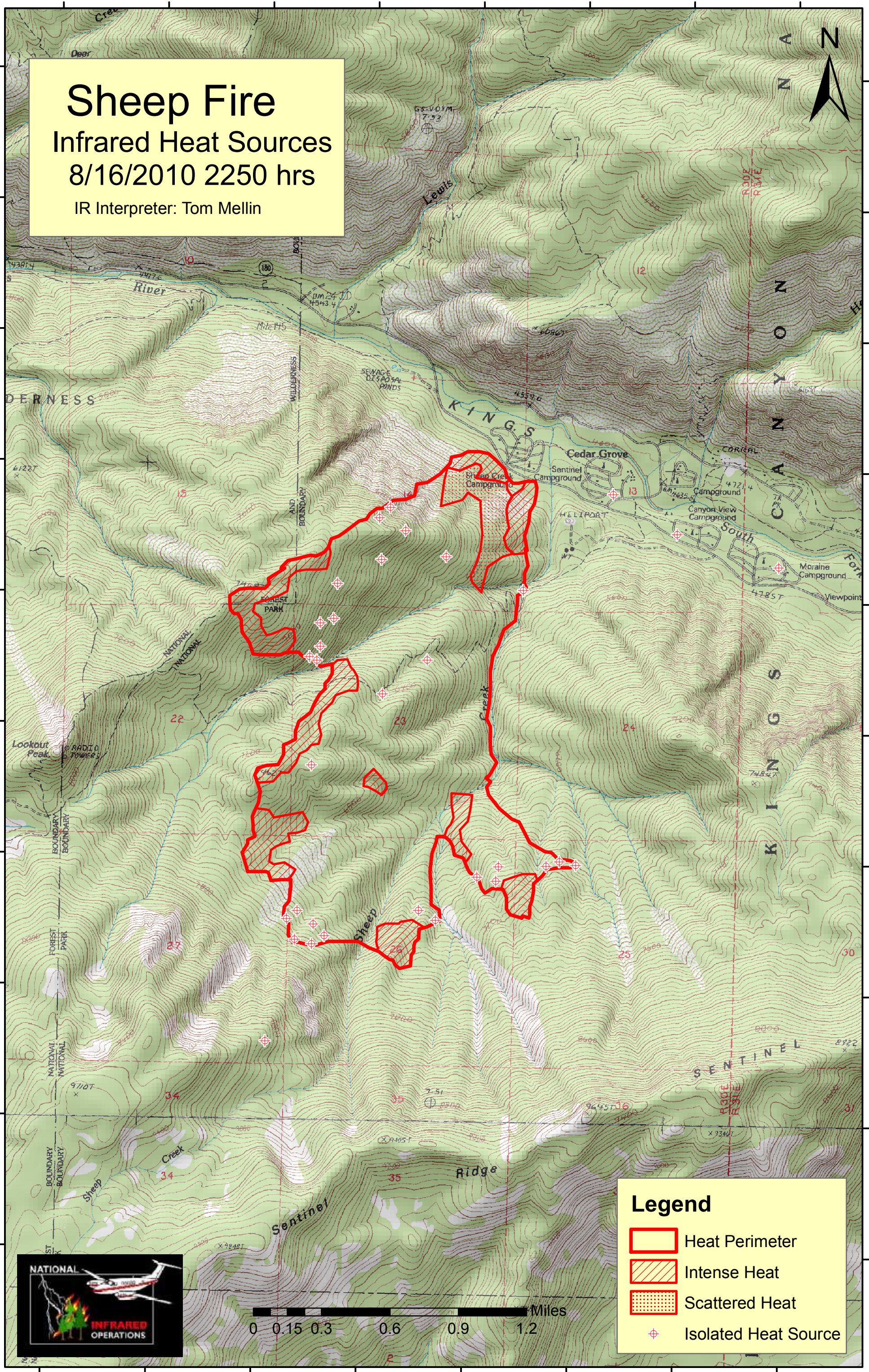
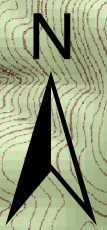


118°43'0"W 118°42'30"W 118°42'0"W 118°41'30"W 118°41'0"W 118°40'30"W 118°40'0"W 118°39'30"W



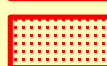

36°49'0"N  
36°48'30"N  
36°48'0"N  
36°47'30"N  
36°47'0"N  
36°46'30"N  
36°46'0"N  
36°45'30"N  
36°45'0"N  
36°44'30"N

36°49'0"N  
36°48'30"N  
36°48'0"N  
36°47'30"N  
36°47'0"N  
36°46'30"N  
36°46'0"N  
36°45'30"N  
36°45'0"N  
36°44'30"N

**Sheep Fire**  
Infrared Heat Sources  
8/16/2010 2250 hrs  
IR Interpreter: Tom Mellin



**Legend**

-  Heat Perimeter
-  Intense Heat
-  Scattered Heat
-  Isolated Heat Source



118°43'0"W 118°42'30"W 118°42'0"W 118°41'30"W 118°41'0"W 118°40'30"W 118°40'0"W 118°39'30"W