

0 0.25 0.5 1 Miles



1:24,000



	L5	L6
M4	M5	M6
N4	N5	N6

Page: L4

Bull Fire

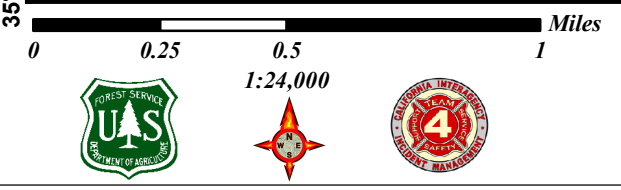
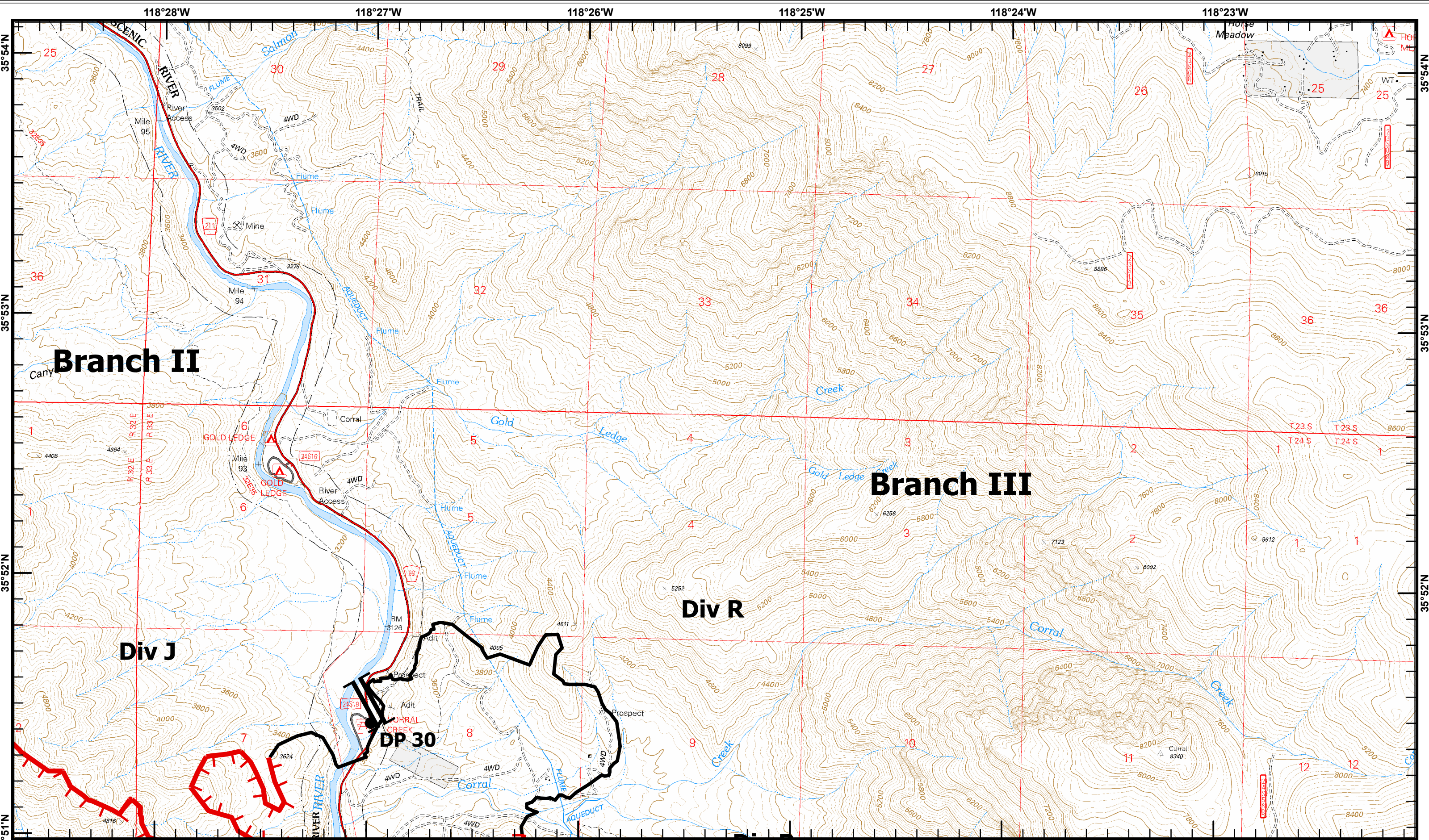
CA-SQF-2701
July 29, 2010

-) (Division Breaks
-]] Branch Breaks

- Drop Point
- ▬ Uncontrolled Fire Edge
- Completed Line

- ⊙ Camp
- Helispot

0600 Hours



L4	L5	L6
M4	M5	M6
N4	N5	N6

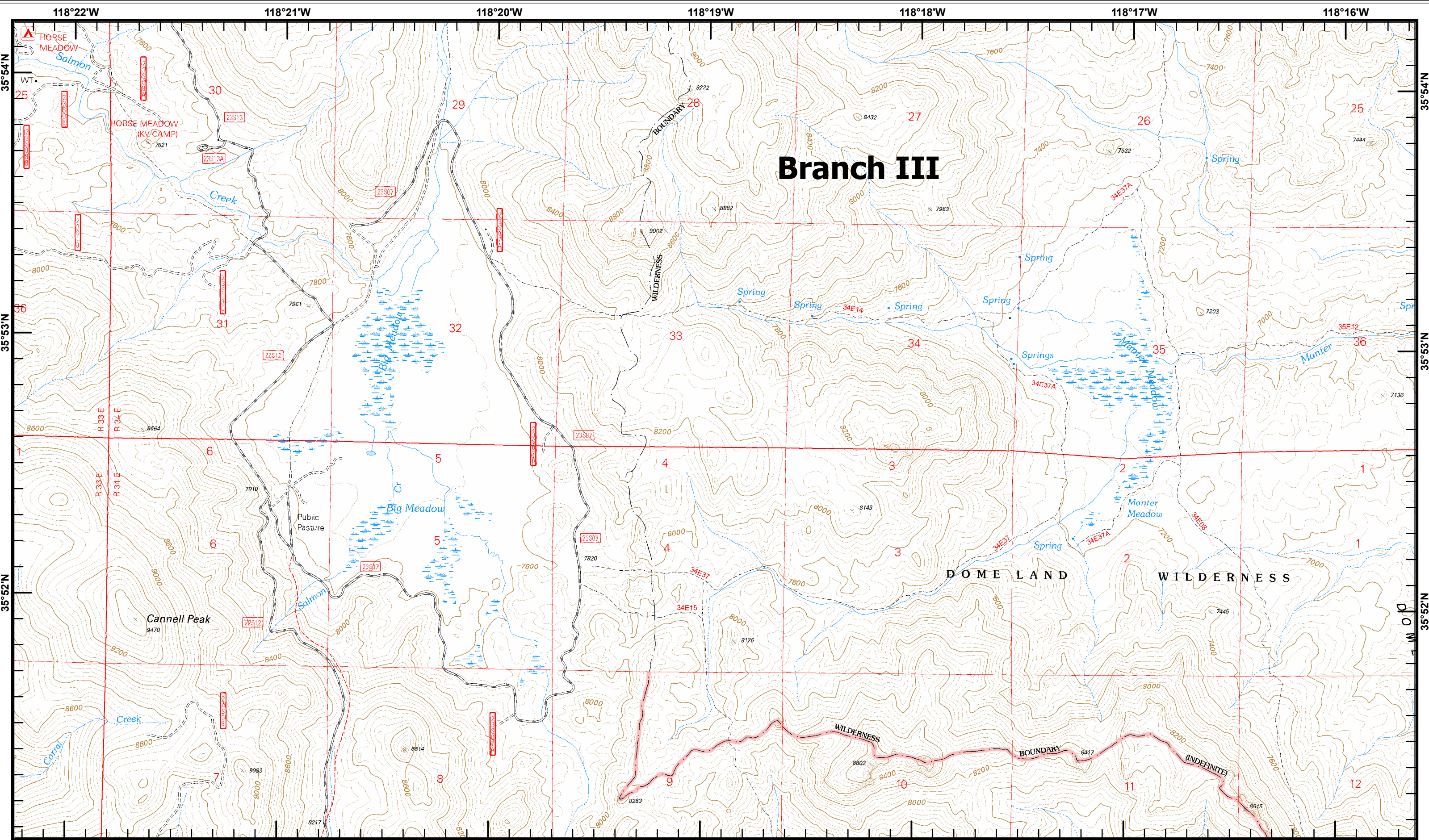
Page: L5

Bull Fire

CA-SQF-2701
July 29, 2010

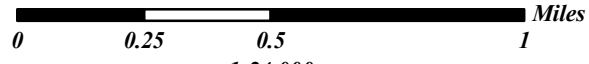
-) (Division Breaks
-] [Branch Breaks
- Drop Point
- ▬ Uncontrolled Fire Edge
- ▬ Completed Line
- Ⓒ Camp
- Helispot

0600 Hours



Branch III

Bull Fire CA-SQF-2701 July 29, 2010

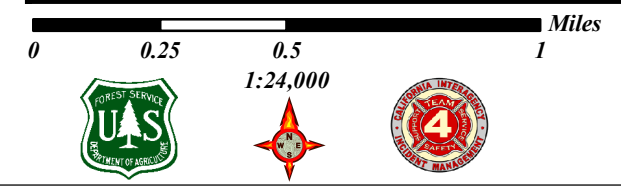
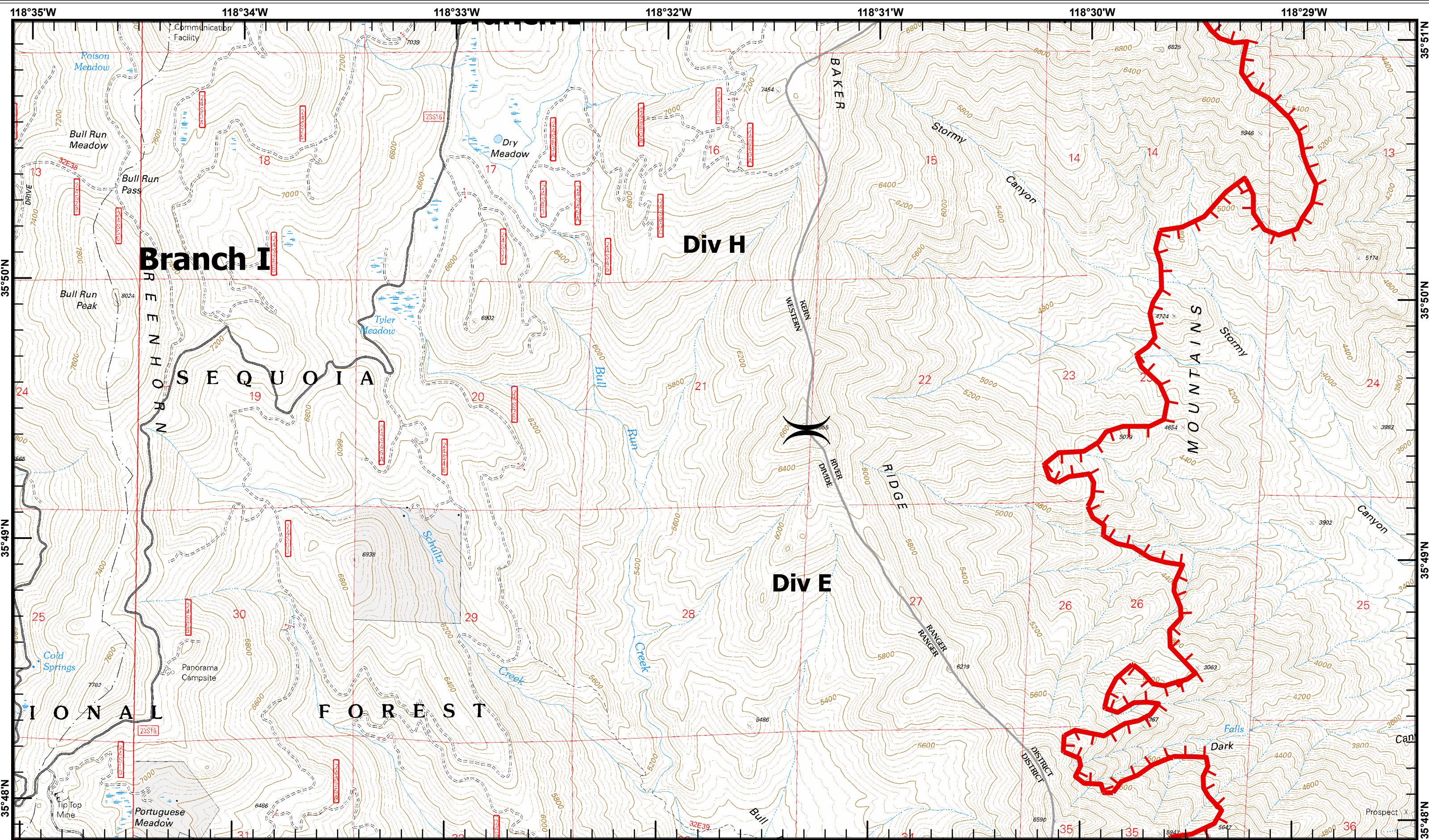


L4	L5	
M4	M5	M6
N4	N5	N6

Page: L6

-)) Division Breaks
-]] Branch Breaks
- Drop Point
- Uncontrolled Fire Edge
- Completed Line
- ⊙ Camp
- Helispot

0600 Hours



L4	L5	L6
M4	M5	M6
N4	N5	N6

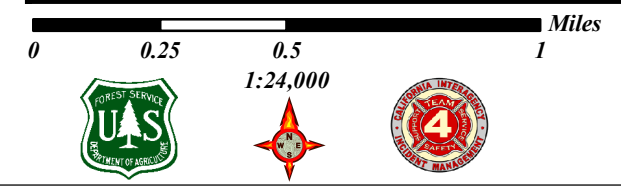
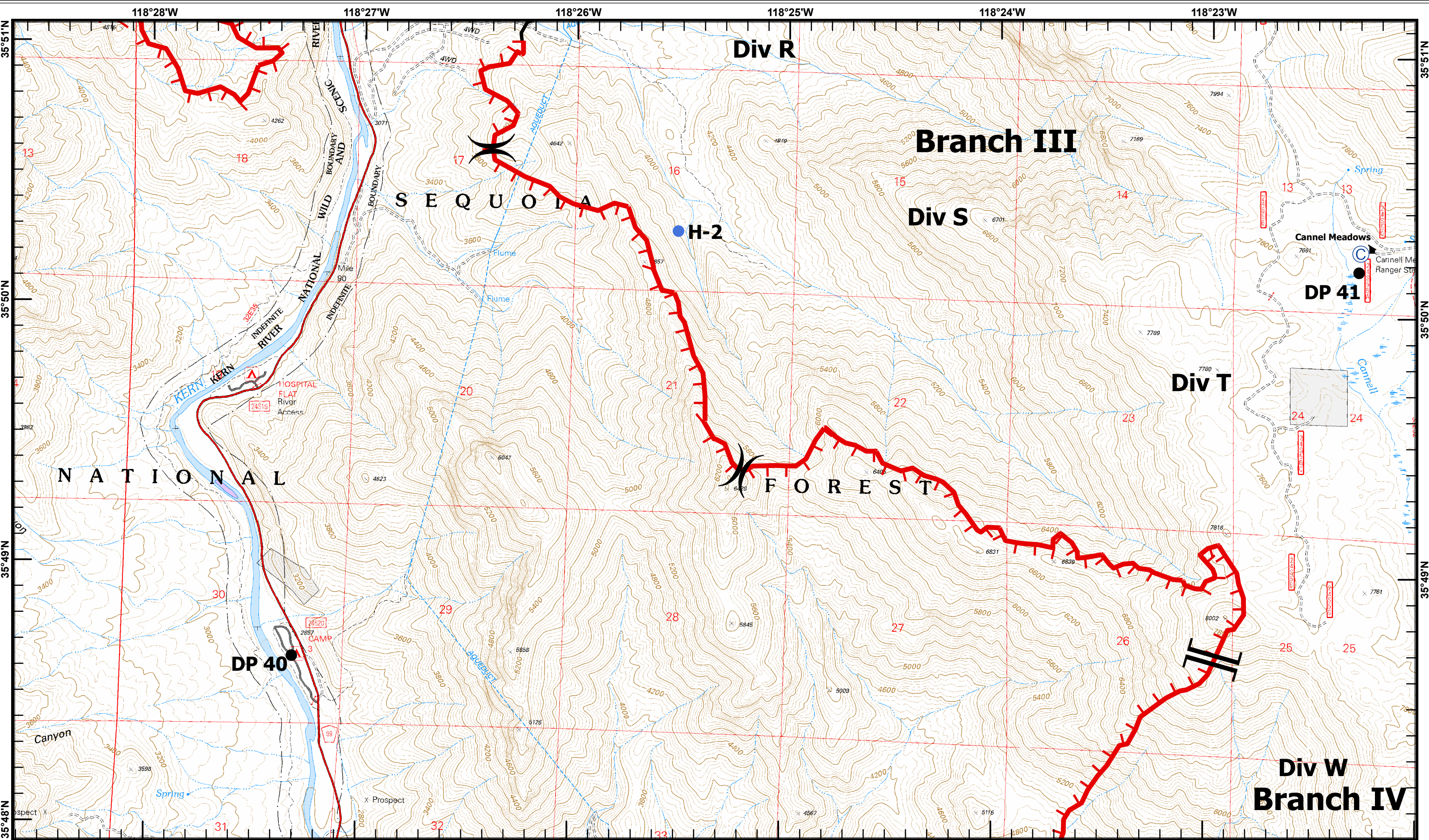
Page: M4

Bull Fire

CA-SQF-2701
July 29, 2010

-)) Division Breaks
-]] Branch Breaks
- Drop Point
- Uncontrolled Fire Edge
- Completed Line
- Ⓢ Camp
- Helispot

0600 Hours



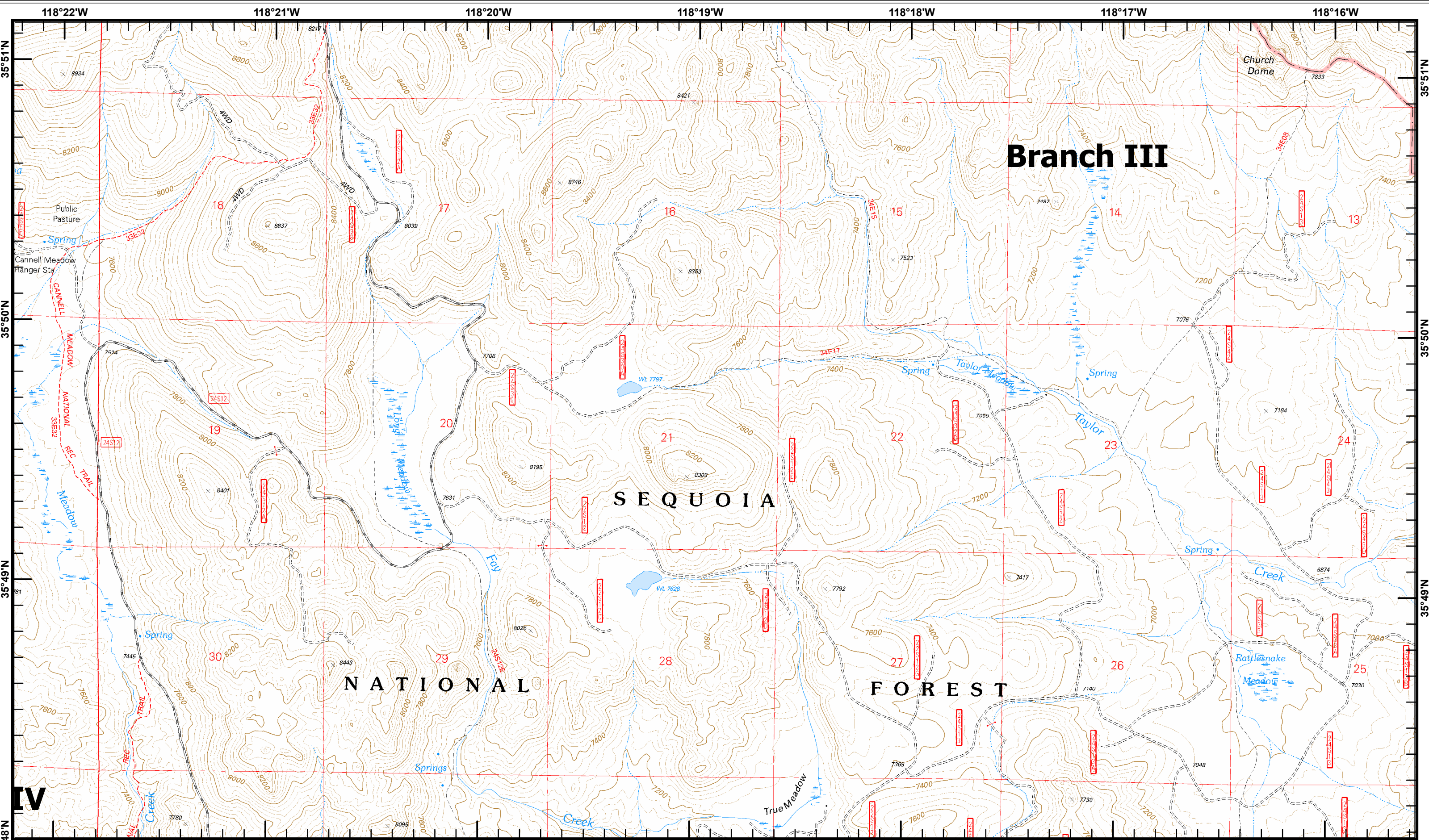
L4	L5	L6
M4		M6
N4	N5	N6

Page: M5

Bull Fire
 CA-SQF-2701
 July 29, 2010

-)) Division Breaks
-]] Branch Breaks
- Drop Point
- Uncontrolled Fire Edge
- Completed Line
- Ⓒ Camp
- Helispot

0600 Hours



Branch III

SEQUOIA

NATIONAL

FOREST

0 0.25 0.5 1 Miles



L4	L5	L6
M4	M5	
N4	N5	N6

Page: M6

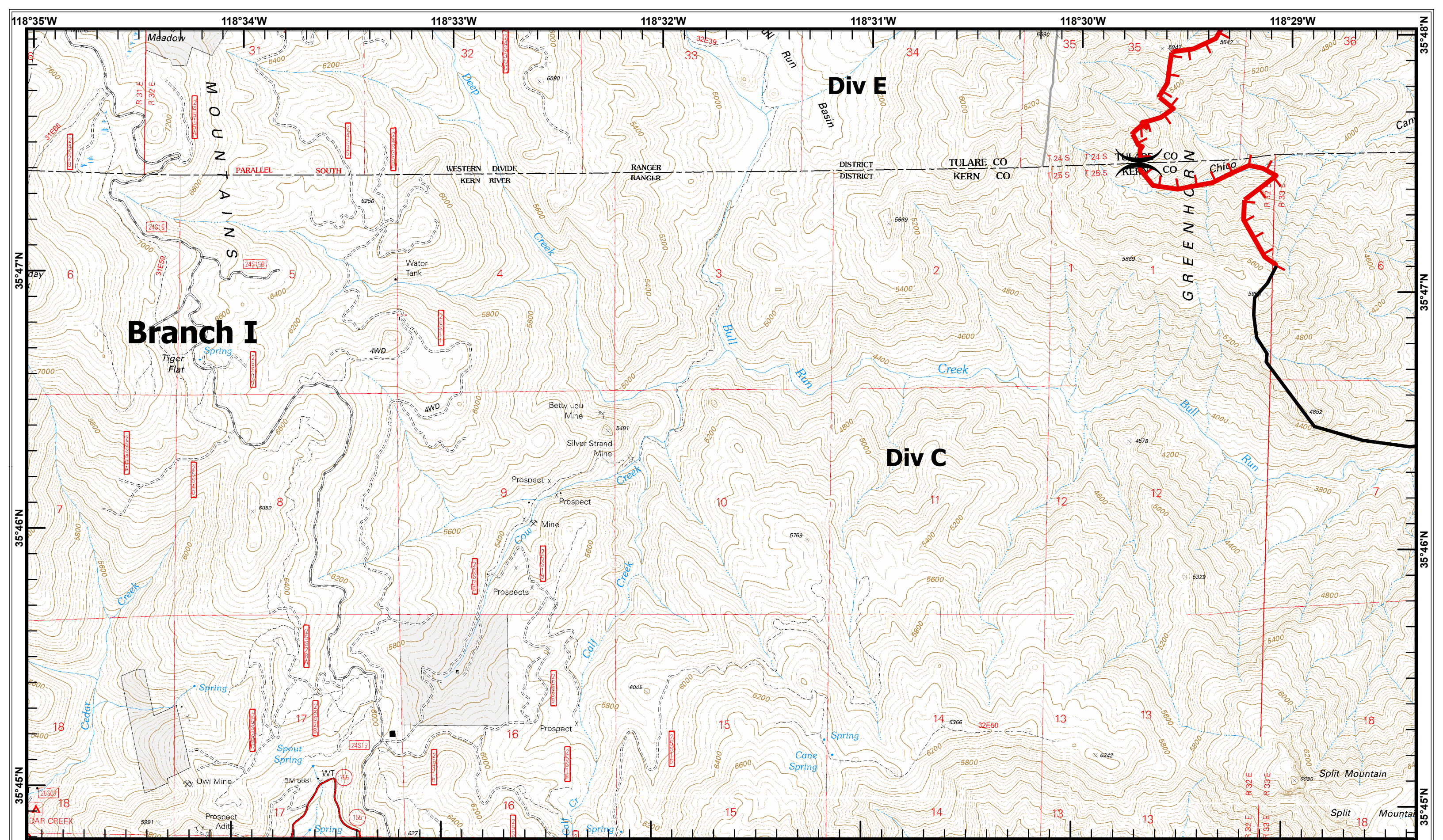
Bull Fire
CA-SQF-2701
July 29, 2010

-) (Division Breaks
-]] Branch Breaks

- Drop Point
- ▬ Uncontrolled Fire Edge
- Completed Line

- ⊙ Camp
- Helispot

0600 Hours



0 0.25 0.5 1 Miles



1:24,000



L4	L5	L6
M4	M5	M6
	N5	N6

Page: N4

Bull Fire

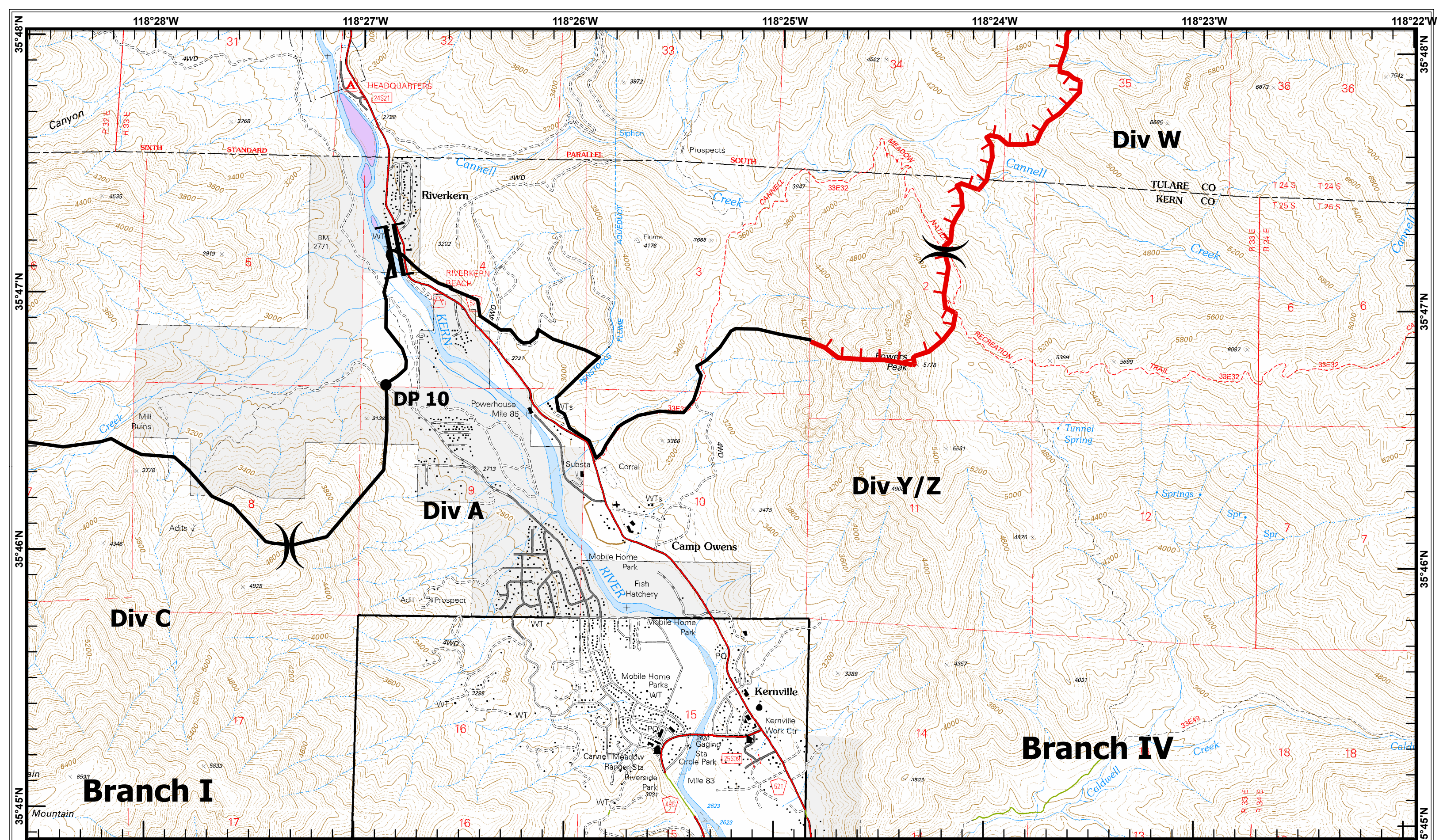
CA-SQF-2701
July 29, 2010

- Division Breaks
- Branch Breaks

- Drop Point
- Uncontrolled Fire Edge
- Completed Line

- Camp
- Helispot

0600 Hours



0 0.25 0.5 1 Miles



L4	L5	L6
M4	M5	M6
N4	N5	N6

Page: N5

Bull Fire

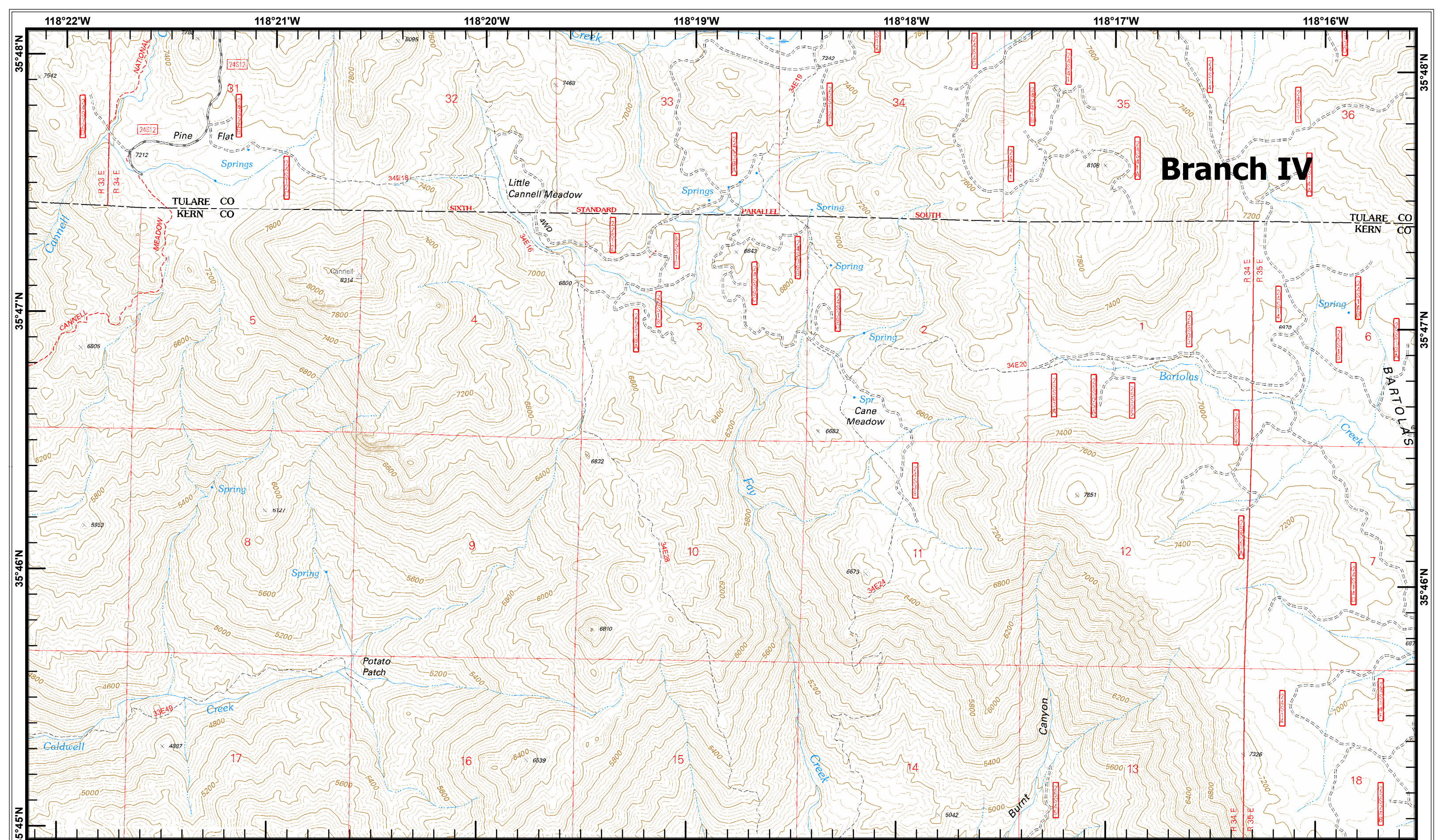
CA-SQF-2701
July 29, 2010

-) (Division Breaks
-]] Branch Breaks

- Drop Point
- ▬ Uncontrolled Fire Edge
- Completed Line

- ⊙ Camp
- Helispot

0600 Hours



Branch IV

0 0.25 0.5 1 Miles



L4	L5	L6
M4	M5	M6
N4	N5	

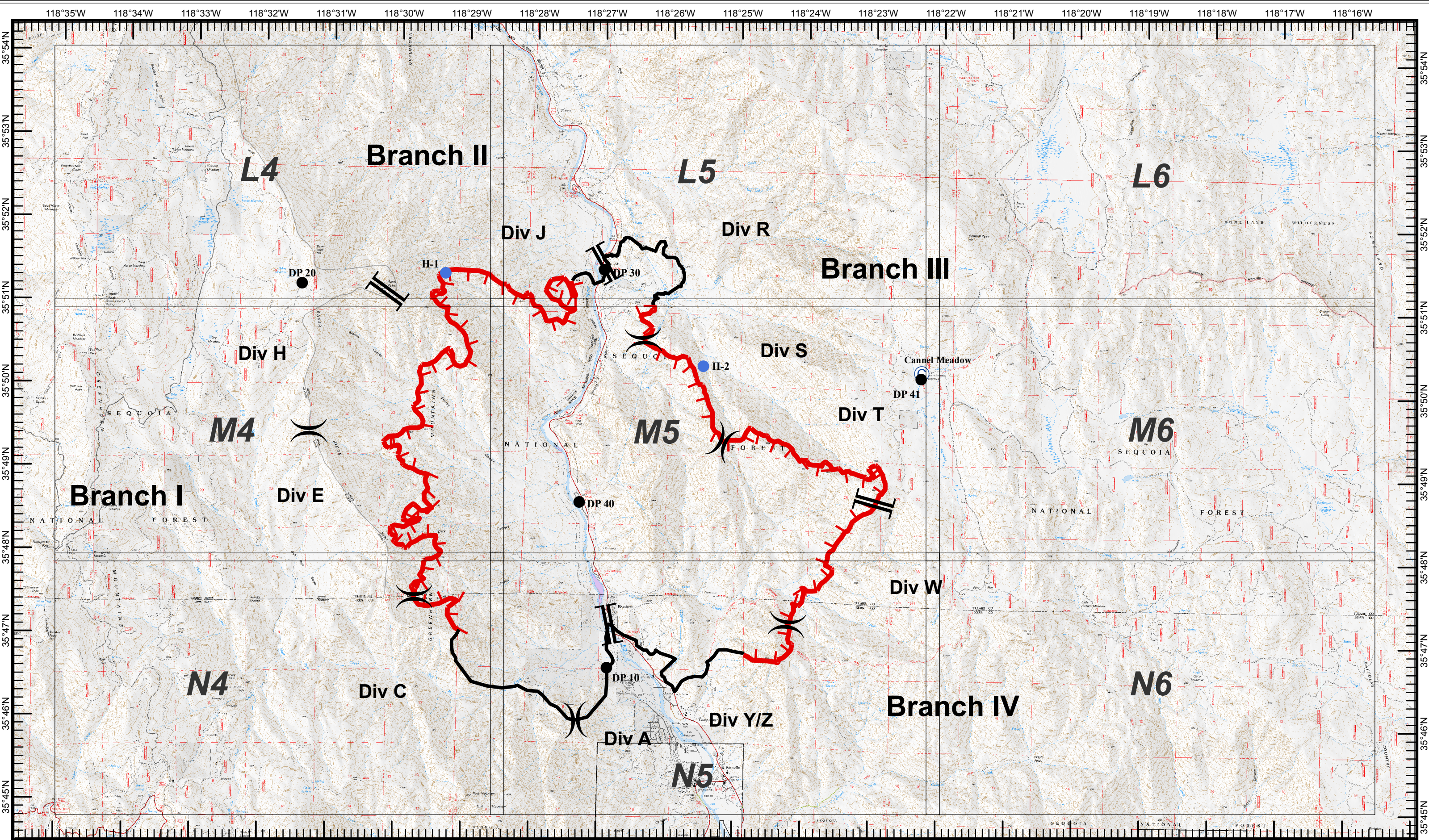
Page: N6

Bull Fire

CA-SQF-2701
July 29, 2010

-)) Division Breaks
-]] Branch Breaks
- Drop Point
- Uncontrolled Fire Edge
- Completed Line
- Ⓢ Camp
- Helispot

0600 Hours



0 0.5 1 2 Miles



M5 IAP Grid Tiles

Bull Fire

CA-SQF-2701
July 29, 2010

-)) Division Breaks
-]] Branch Breaks
- Drop Point
- Uncontrolled Fire Edge
- Completed Line
- Ⓒ Camp
- Helispot

0600 Hours