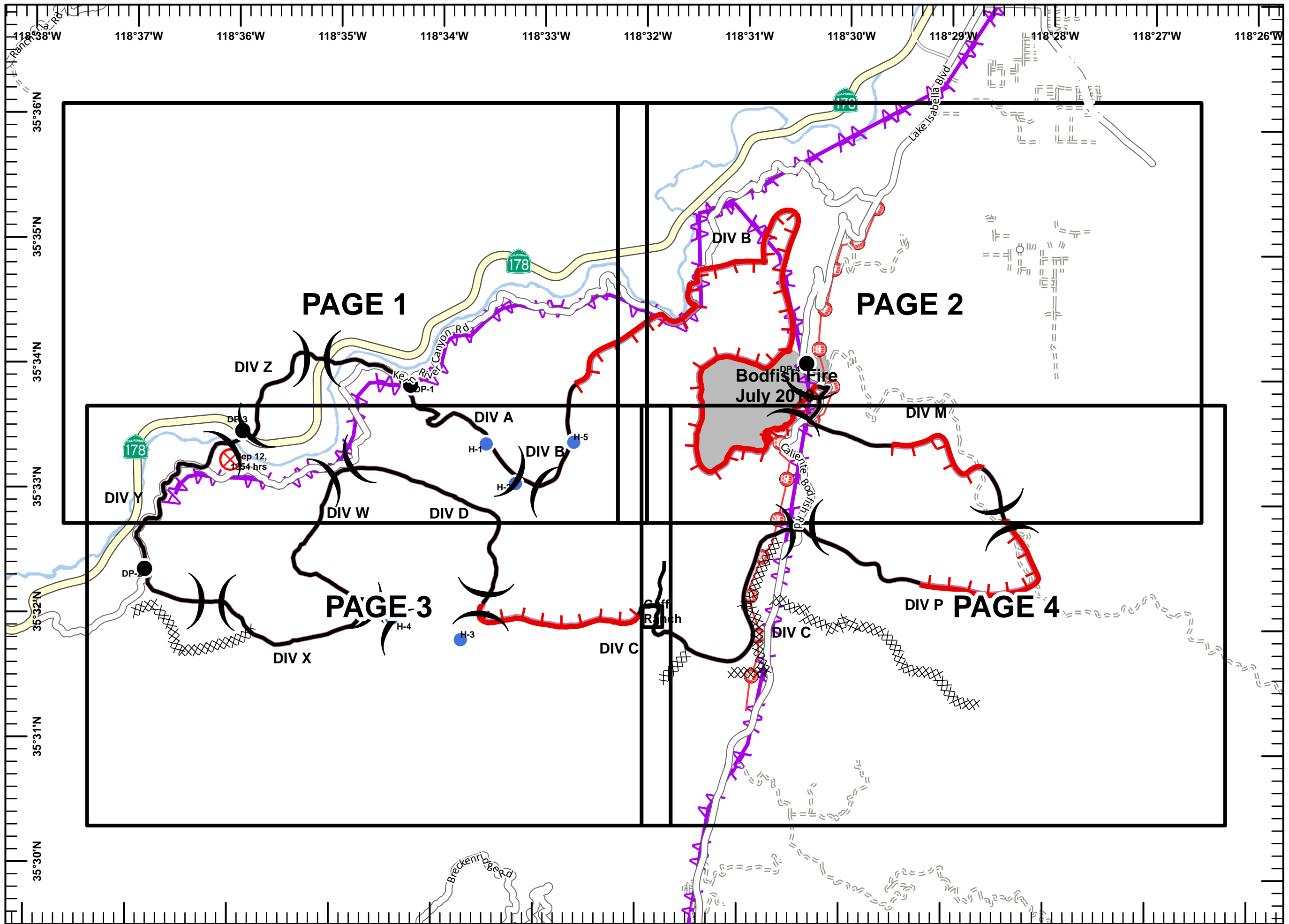
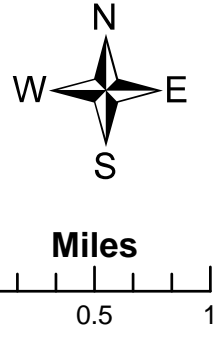


Canyon Incident
CA-SQF-003564
NAD83 Datum
September 15, 2010
Night Shift
Map Index
8147 Acres



- Legend**
- Division
 - Drop Point
 - Fire Origin
 - Helispot
 - Mining Hazards
 - Cultivation Sites
 - USFS AML Sites
 - Completed Line
 - Uncontrolled Fire Edge
 - Completed Dozer Line
 - Power Lines
 - Communication Lines

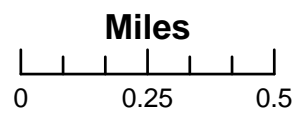
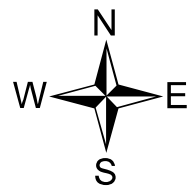


JAD
 September 15, 2010
 2300 Hours

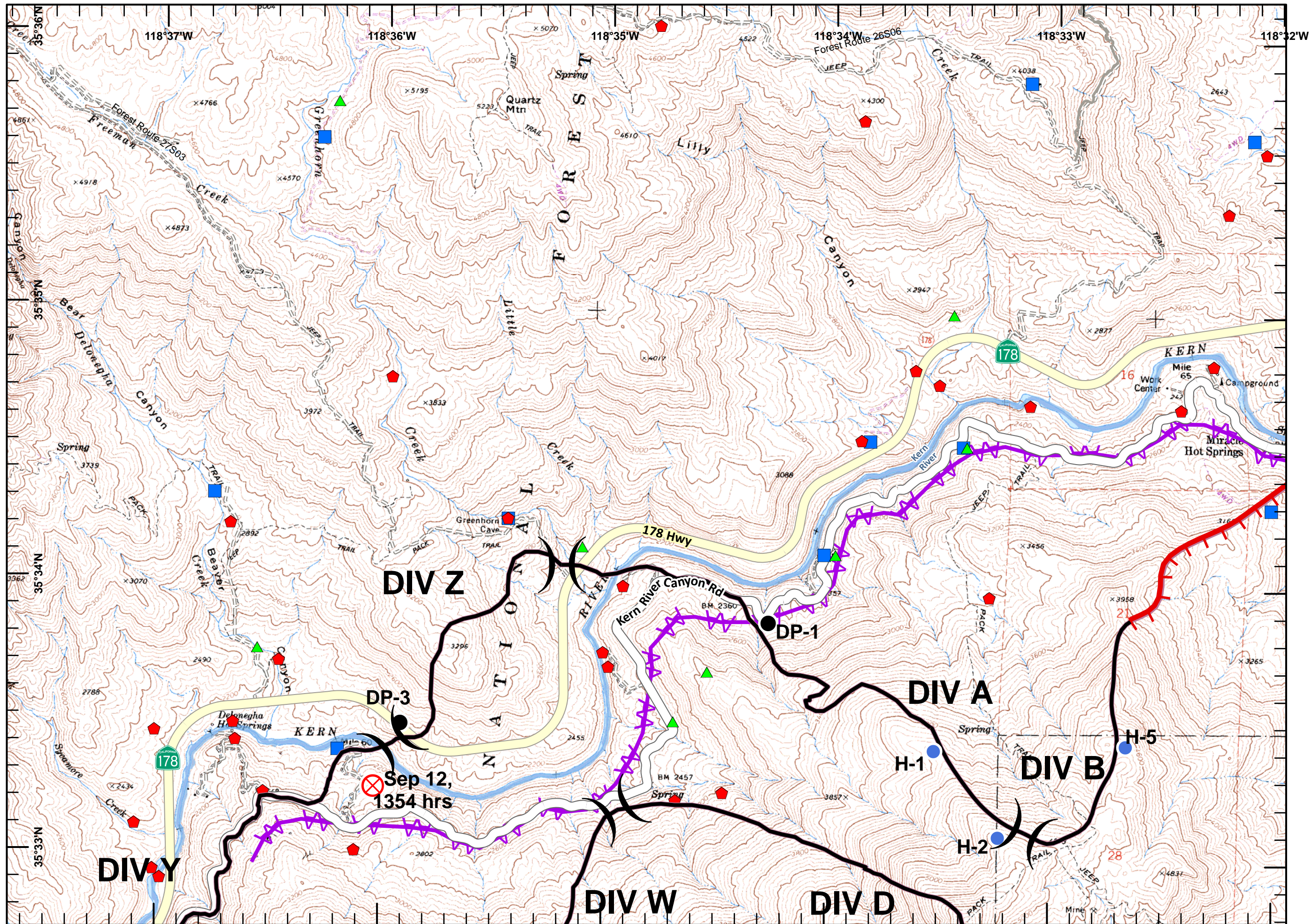
Canyon Incident
CA-SQF-003564
NAD83 Datum
September 15, 2010
Night Shift
Map 1 of 4
8147 Acres

Legend

- Division
- Drop Point
- Fire Origin
- Helispot
- Mining Hazards
- Cultivation Sites
- USFS AML Sites
- Completed Line
- Uncontrolled Fire Edge
- Completed Dozer Line
- Power Lines
- Communication Lines

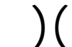













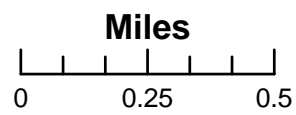
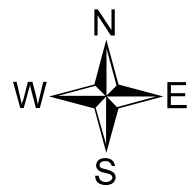
JAD
 September 15, 2010
 2300 Hours



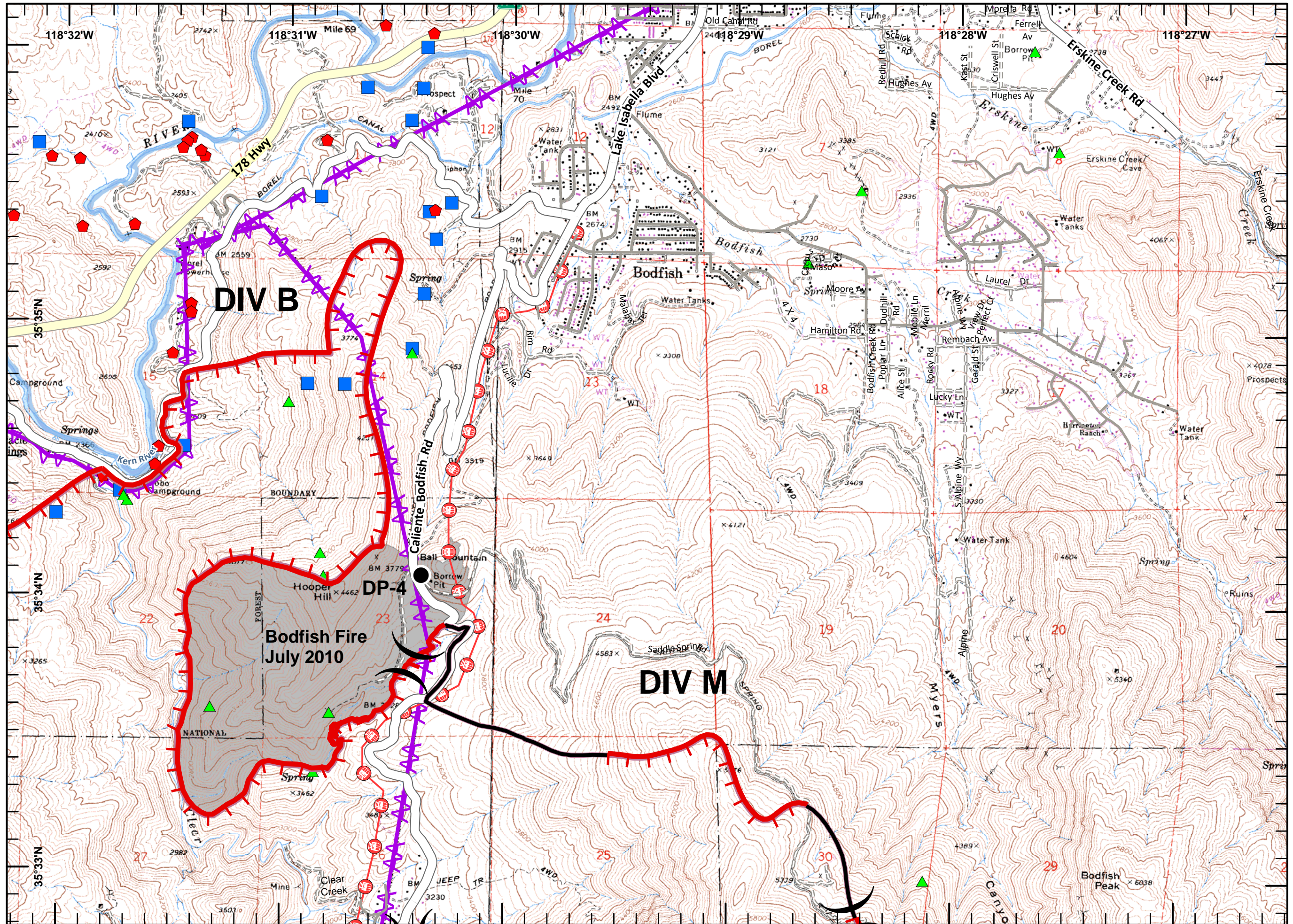
**Canyon Incident
 CA-SQF-003564
 NAD83 Datum
 September 15, 2010
 Night Shift
 Map 2 of 4
 8147 Acres**

Legend

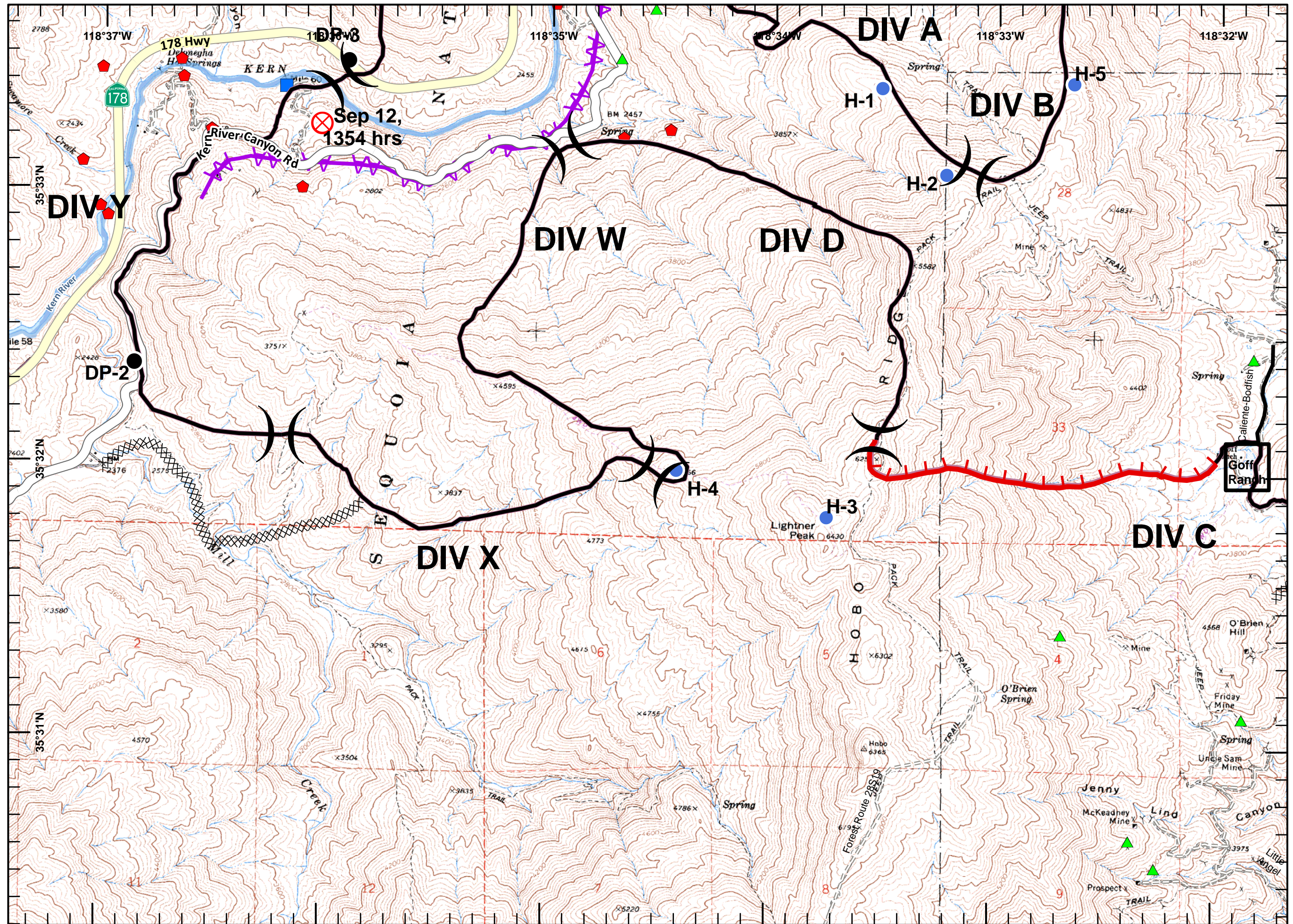
-  Division
-  Drop Point
-  Fire Origin
-  Helispot
-  Mining Hazards
-  Cultivation Sites
-  USFS AML Sites
-  Completed Line
-  Uncontrolled Fire Edge
-  Completed Dozer Line
-  Power Lines
-  Communication Lines



JAD
 September 15, 2010
 2300 Hours

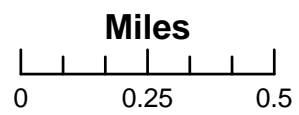


Canyon Incident
CA-SQF-003564
NAD83 Datum
September 15, 2010
Night Shift
Map 3 of 4
8147 Acres



Legend

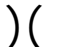











- Division
- Drop Point
- Fire Origin
- Helispot
- Mining Hazards
- Cultivation Sites
- USFS AML Sites
- Completed Line
- Uncontrolled Fire Edge
- Completed Dozer Line
- Power Lines
- Communication Lines

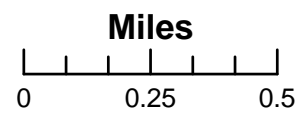
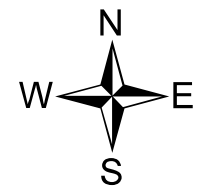


JAD
 September 15, 2010
 2300 Hours

Canyon Incident
CA-SQF-003564
NAD83 Datum
September 15, 2010
Night Shift
Map 4 of 4
8147 Acres

Legend

-  Division
-  Drop Point
-  Fire Origin
-  Helispot
-  Mining Hazards
-  Cultivation Sites
-  USFS AML Sites
-  Completed Line
-  Uncontrolled Fire Edge
-  Completed Dozer Line
-  Power Lines
-  Communication Lines



JAD
 September 15, 2010
 2300 Hours

