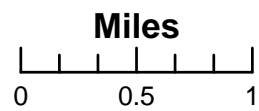
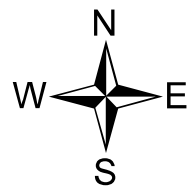
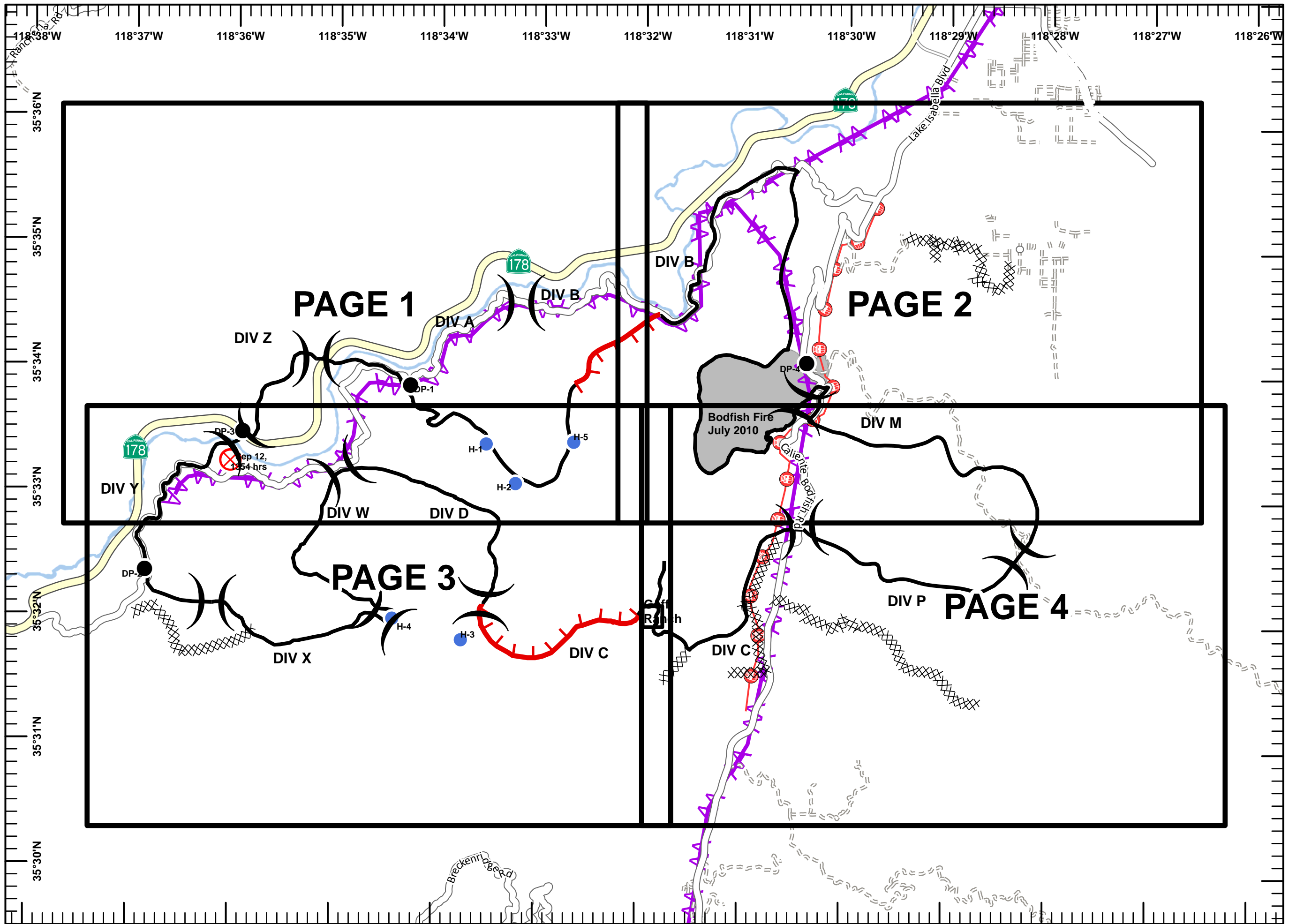


**Canyon Incident**  
**CA-SQF-003564**  
**NAD83 Datum**  
**September 16, 2010**  
**Night Shift**  
**Map Index**  
**8560 Acres**

- Legend**
- Division
  - Drop Point
  - X Fire Origin
  - Helispot
  - Mining Hazards
  - Cultivation Sites
  - USFS AML Sites
  - Completed Line
  - Uncontrolled Fire Edge
  - Completed Dozer Line
  - Power Lines
  - Communication Lines



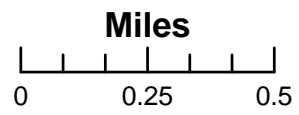
JAD  
 September 16, 2010  
 1630 Hours



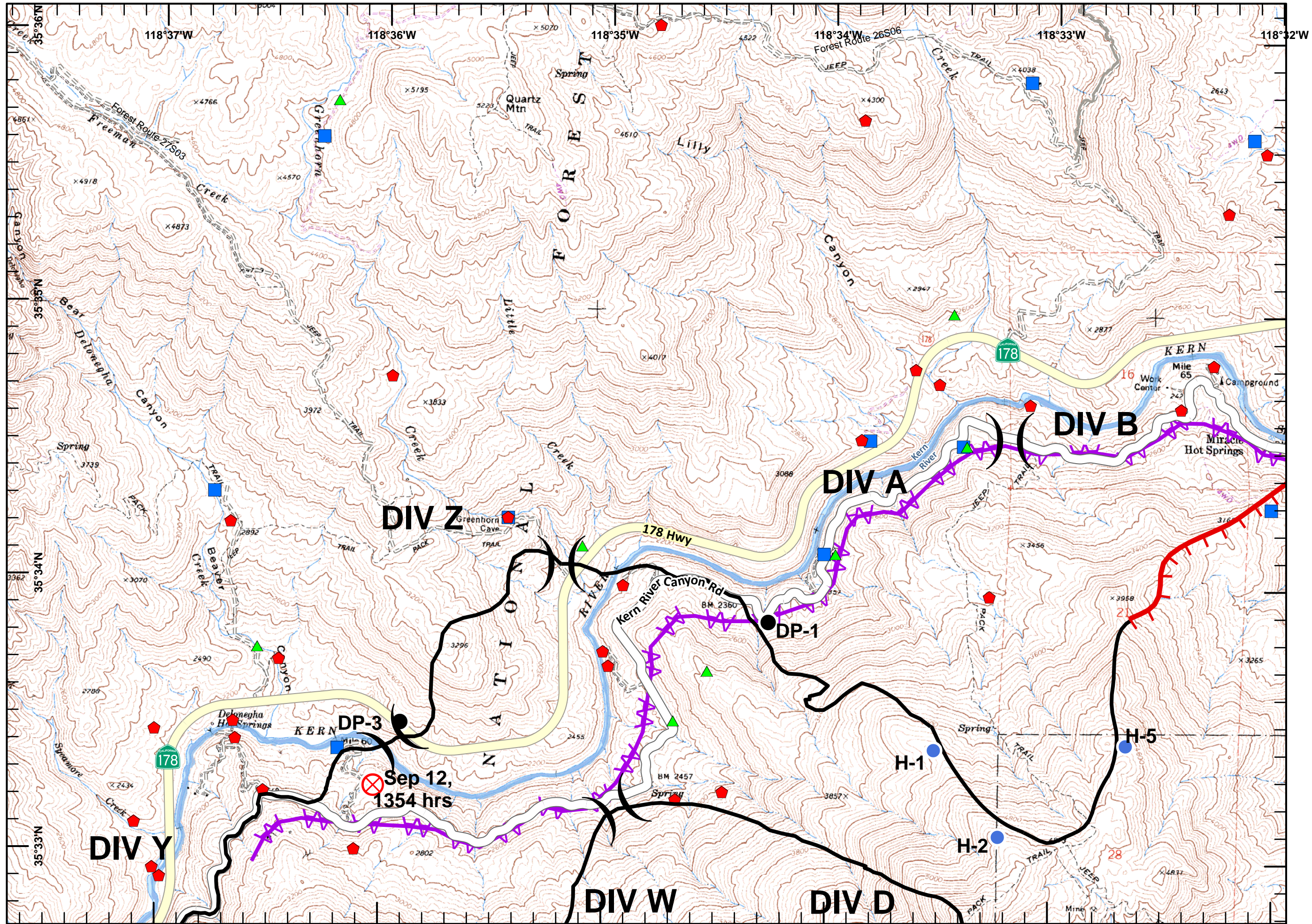
**Canyon Incident**  
**CA-SQF-003564**  
**NAD83 Datum**  
**September 16, 2010**  
**Night Shift**  
**Map 1 of 4**  
**8560 Acres**

**Legend**

- ) Division
- Drop Point
- ⊗ Fire Origin
- Helispot
- ▲ Mining Hazards
- ◆ Cultivation Sites
- USFS AML Sites
- Completed Line
- Uncontrolled Fire Edge
- Completed Dozer Line
- ▲▲▲ Power Lines
- Communication Lines

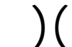













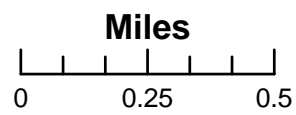
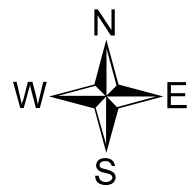
JAD  
 September 16, 2010  
 1630 Hours



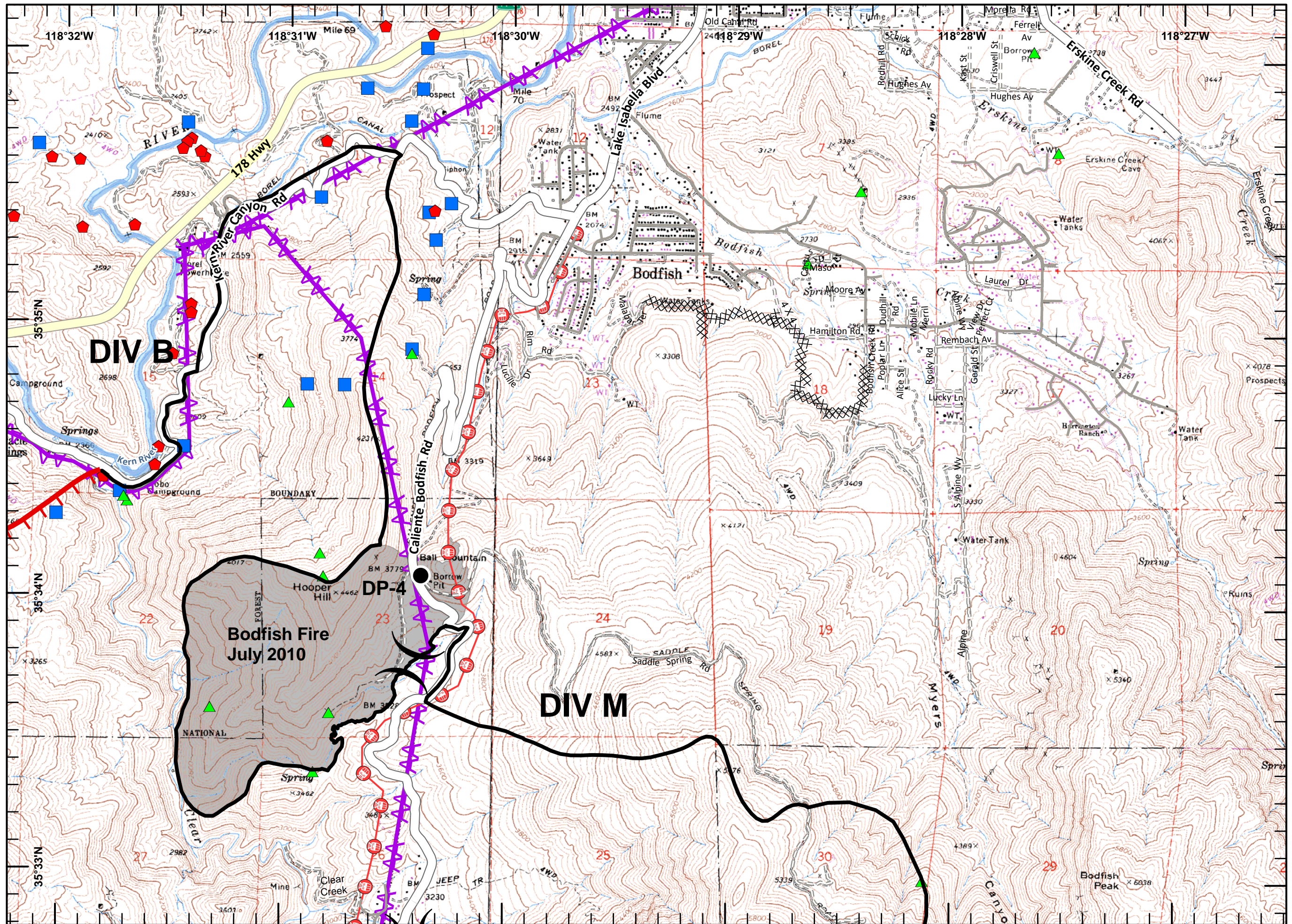
**Canyon Incident**  
**CA-SQF-003564**  
**NAD83 Datum**  
**September 16, 2010**  
**Night Shift**  
**Map 2 of 4**  
**8560 Acres**

**Legend**

-  Division
-  Drop Point
-  Fire Origin
-  Helispot
-  Mining Hazards
-  Cultivation Sites
-  USFS AML Sites
-  Completed Line
-  Uncontrolled Fire Edge
-  Completed Dozer Line
-  Power Lines
-  Communication Lines

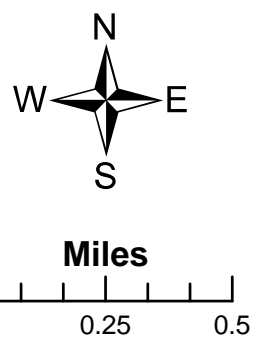


JAD  
 September 16, 2010  
 1630 Hours

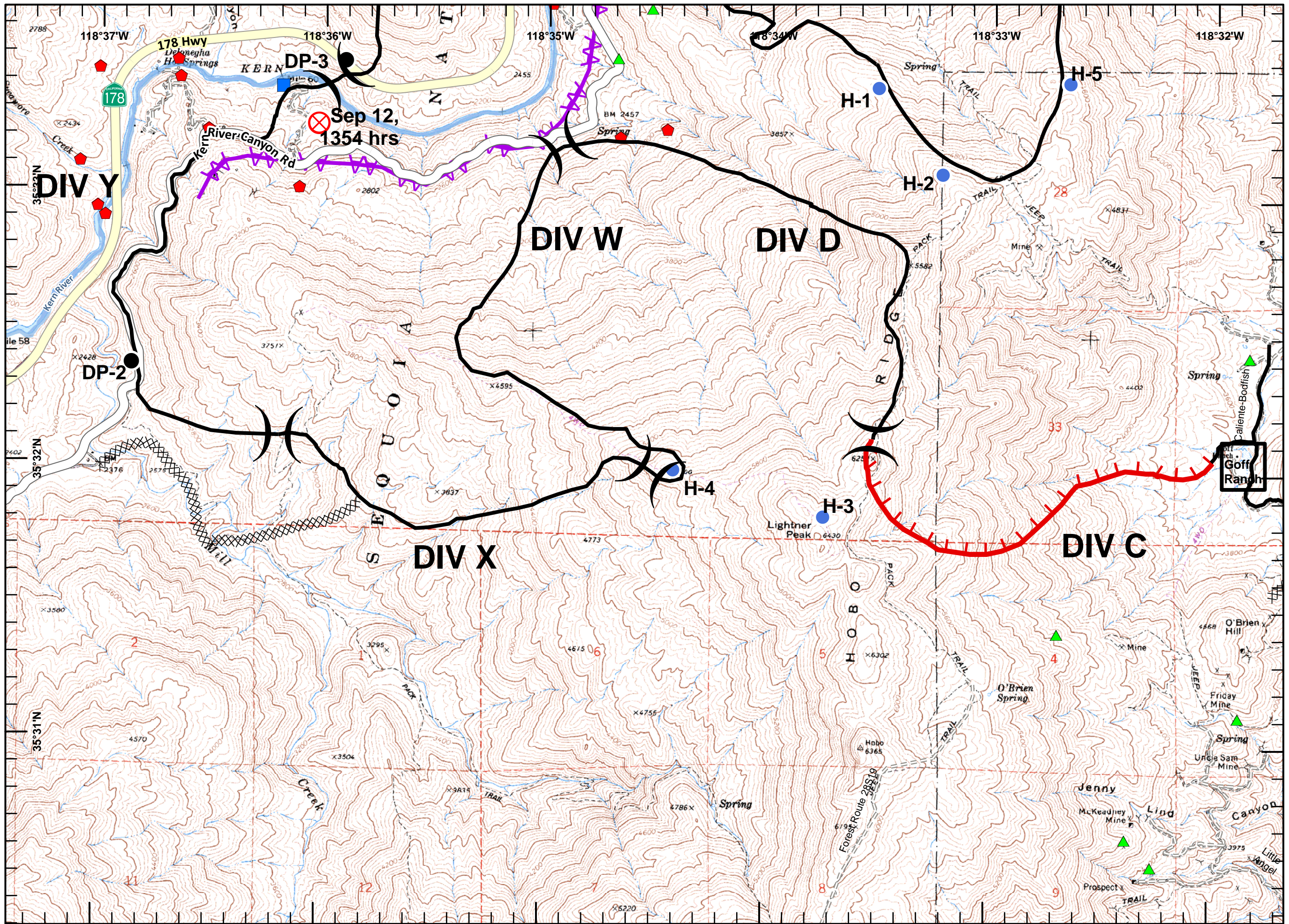


**Canyon Incident**  
**CA-SQF-003564**  
**NAD83 Datum**  
**September 16, 2010**  
**Night Shift**  
**Map 3 of 4**  
**8560 Acres**

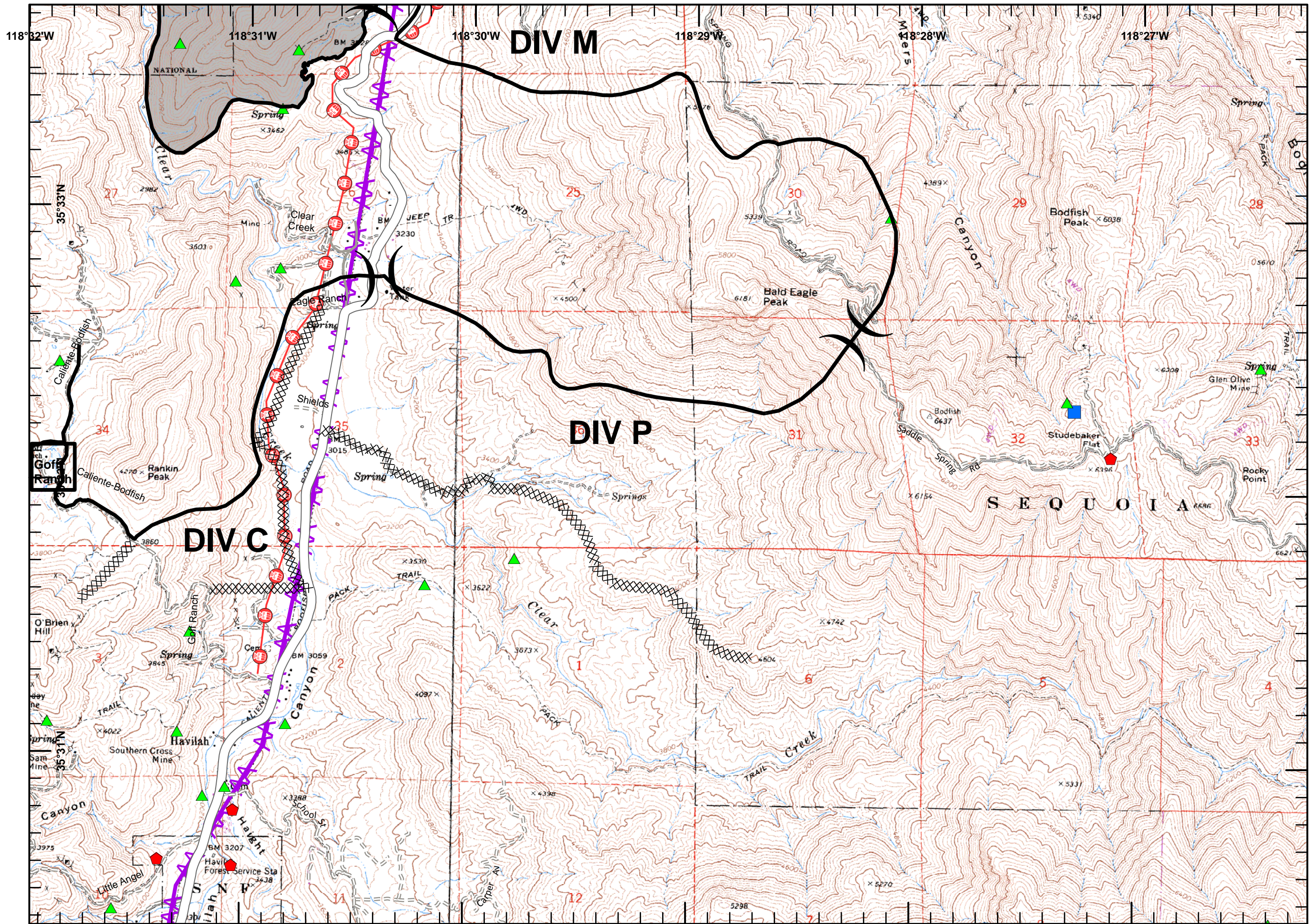
- Legend**
- Division
  - Drop Point
  - Fire Origin
  - Helispot
  - Mining Hazards
  - Cultivation Sites
  - USFS AML Sites
  - Completed Line
  - Uncontrolled Fire Edge
  - Completed Dozer Line
  - Power Lines
  - Communication Lines



JAD  
 September 16, 2010  
 1630 Hours

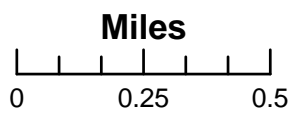
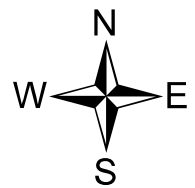


**Canyon Incident**  
**CA-SQF-003564**  
**NAD83 Datum**  
**September 16, 2010**  
**Night Shift**  
**Map 4 of 4**  
**8560 Acres**



**Legend**

- Division
- Drop Point
- Fire Origin
- Helispot
- Mining Hazards
- Cultivation Sites
- USFS AML Sites
- Completed Line
- Uncontrolled Fire Edge
- Completed Dozer Line
- Power Lines
- Communication Lines



JAD  
 September 16, 2010  
 1630 Hours