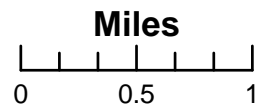
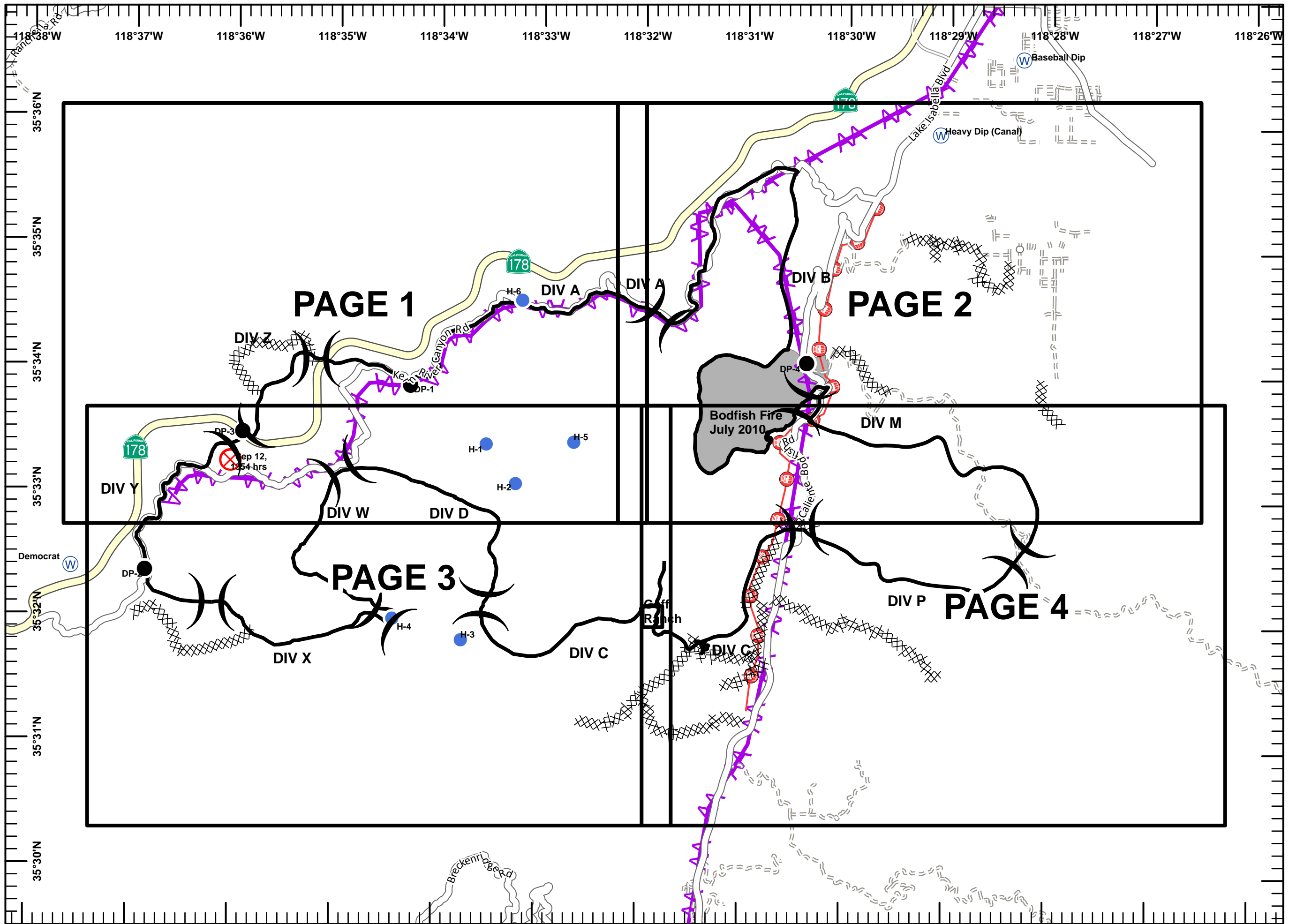


Canyon Incident
CA-SQF-003564
NAD83 Datum
September 19, 2010
Day Shift
Map Index
9820 Acres

- Legend**
- Division
 - Drop Point
 - Fire Origin
 - Helispot
 - Water Source
 - Mining Hazards
 - Cultivation Sites
 - USFS AML Sites
 - Completed Line
 - Uncontrolled Fire Edge
 - Completed Dozer Line
 - Power Lines
 - Communication Lines



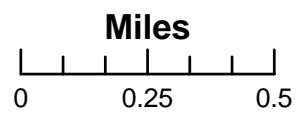
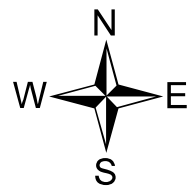
JAD
 September 18, 2010
 2030 Hours



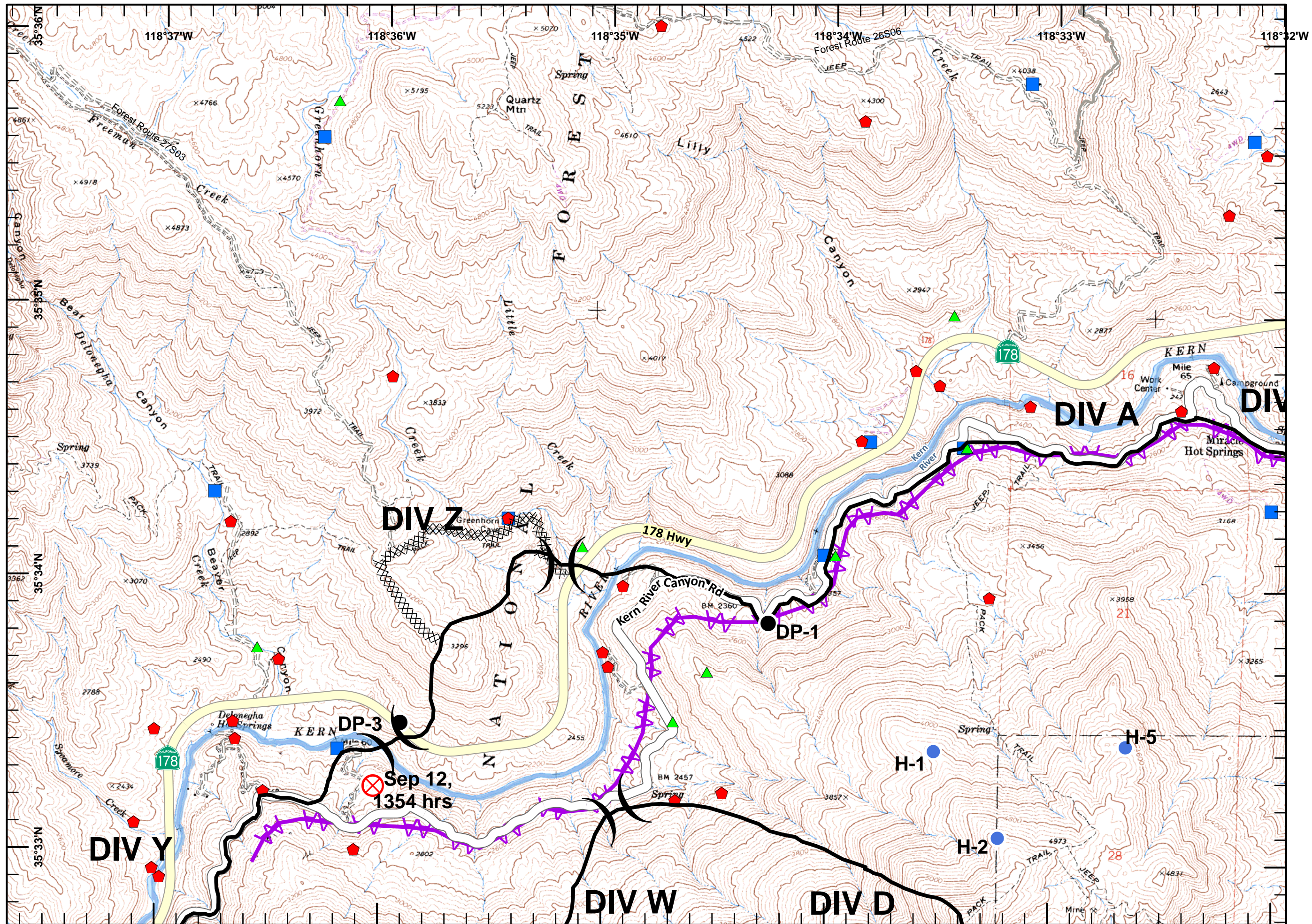
Canyon Incident
CA-SQF-003564
NAD83 Datum
September 18, 2010
Day Shift
Map 1 of 4
9820 Acres

Legend

-) Division
- Drop Point
- ⊗ Fire Origin
- Helispot
- ▲ Mining Hazards
- ◆ Cultivation Sites
- USFS AML Sites
- Completed Line
- Uncontrolled Fire Edge
- Completed Dozer Line
- ▲▲▲ Power Lines
- Ⓜ Communication Lines



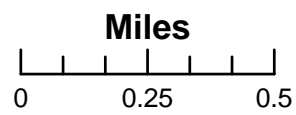
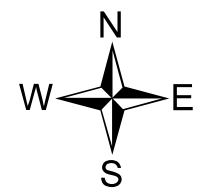
JAD
 September 17, 2010
 1930 Hours



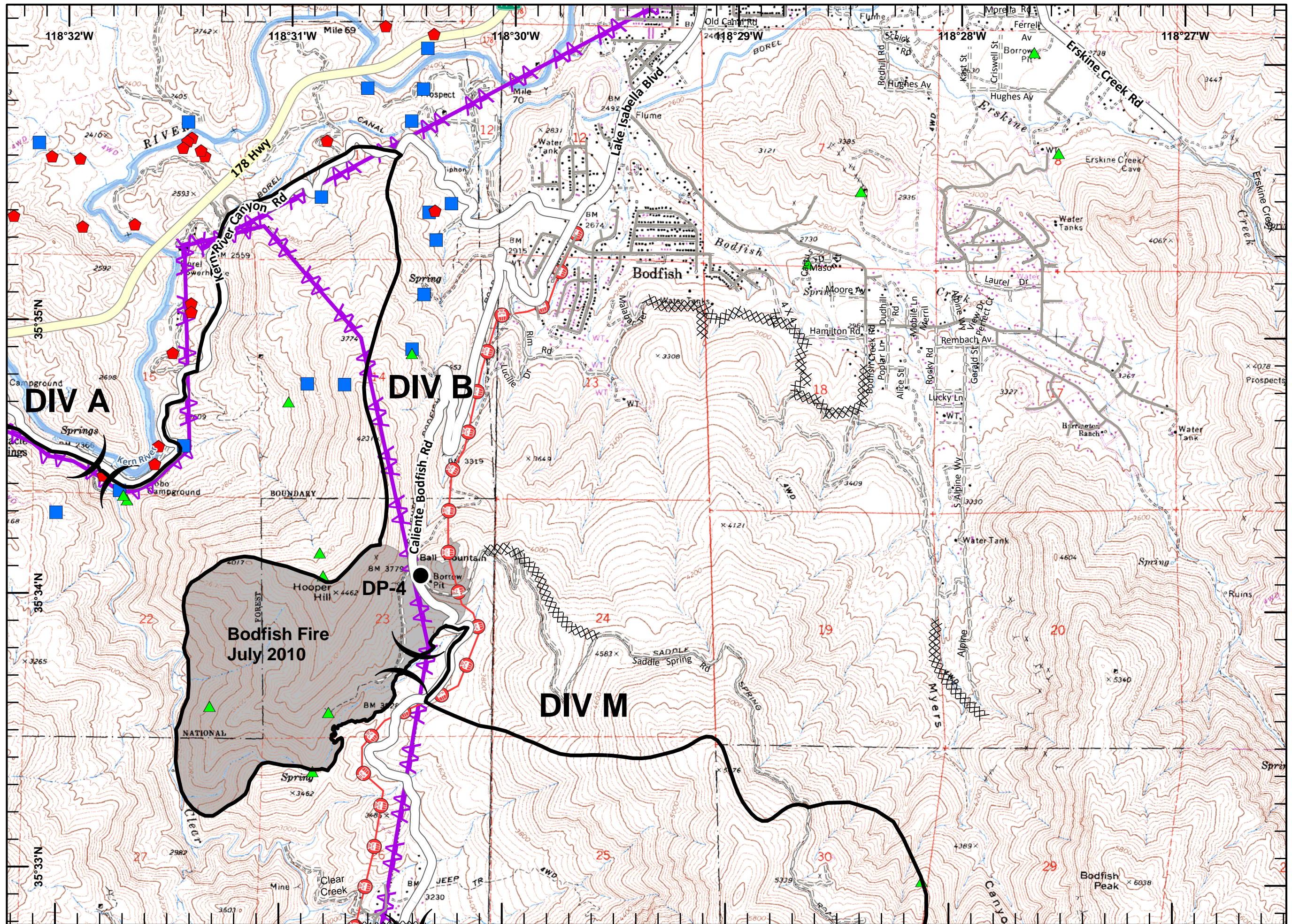
Canyon Incident
CA-SQF-003564
NAD83 Datum
September 18, 2010
Day Shift
Map 2 of 4
9820 Acres

Legend

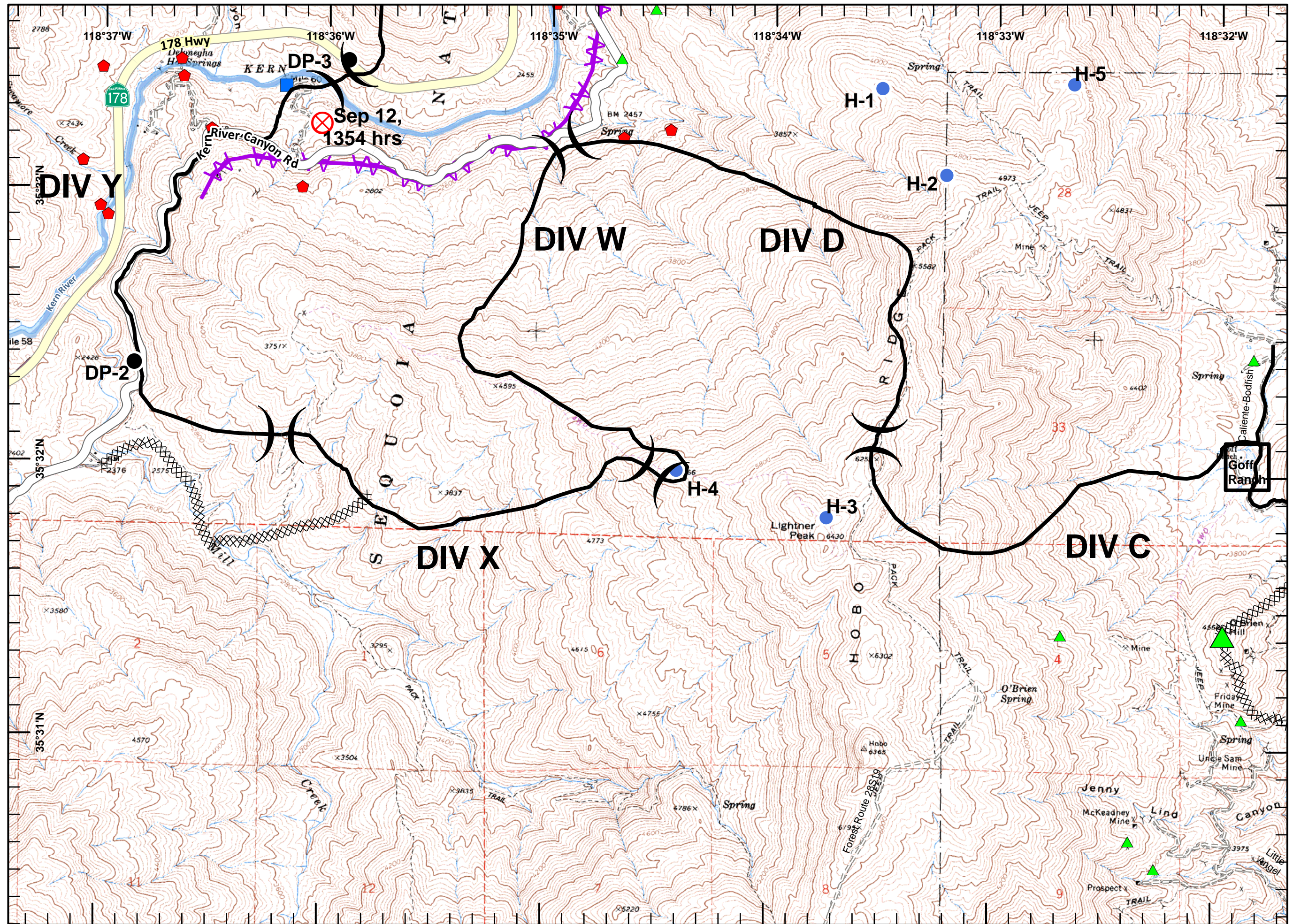
- Division
- Drop Point
- Fire Origin
- Helispot
- Mining Hazards
- Cultivation Sites
- USFS AML Sites
- Completed Line
- Uncontrolled Fire Edge
- Completed Dozer Line
- Power Lines
- Communication Lines



JAD
 September 17, 2010
 1930 Hours

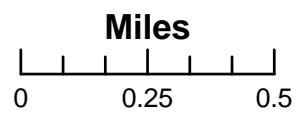


Canyon Incident
CA-SQF-003564
NAD83 Datum
September 18, 2010
Day Shift
Map 3 of 4
9820 Acres



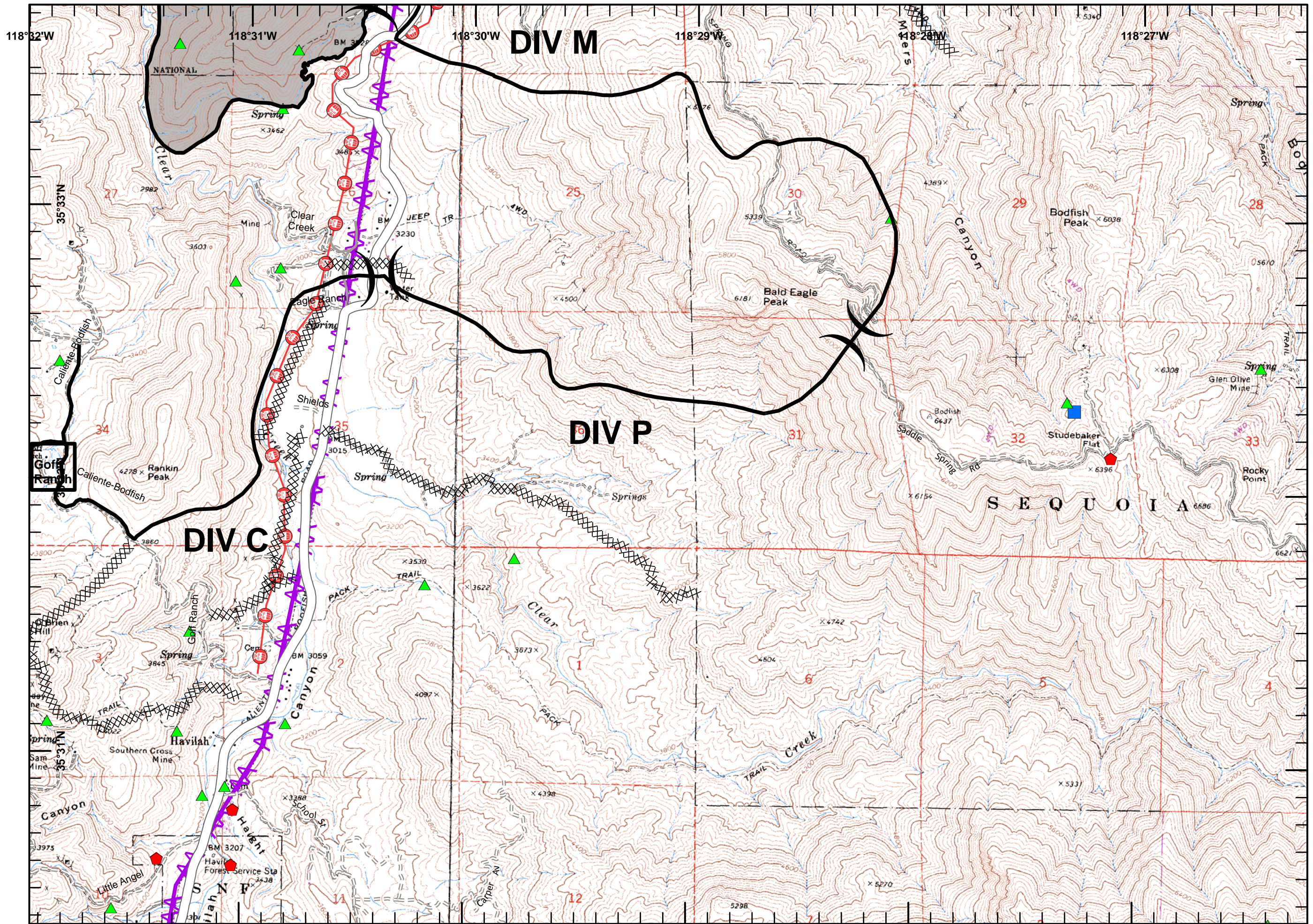
Legend

- Division
- Drop Point
- Fire Origin
- Helispot
- Mining Hazards
- Cultivation Sites
- USFS AML Sites
- Completed Line
- Uncontrolled Fire Edge
- Completed Dozer Line
- Power Lines
- Communication Lines

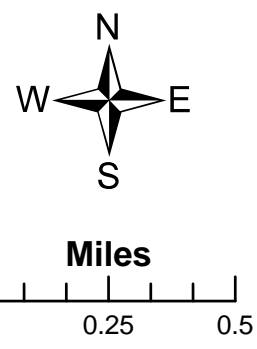


JAD
 September 17, 2010
 1930 Hours

Canyon Incident
CA-SQF-003564
NAD83 Datum
September 18, 2010
Day Shift
Map 4 of 4
9820 Acres



- Legend**
- Division
 - Drop Point
 - Fire Origin
 - Helispot
 - Mining Hazards
 - Cultivation Sites
 - USFS AML Sites
 - Completed Line
 - Uncontrolled Fire Edge
 - Completed Dozer Line
 - Power Lines
 - Communication Lines



JAD
 September 17, 2010
 1930 Hours