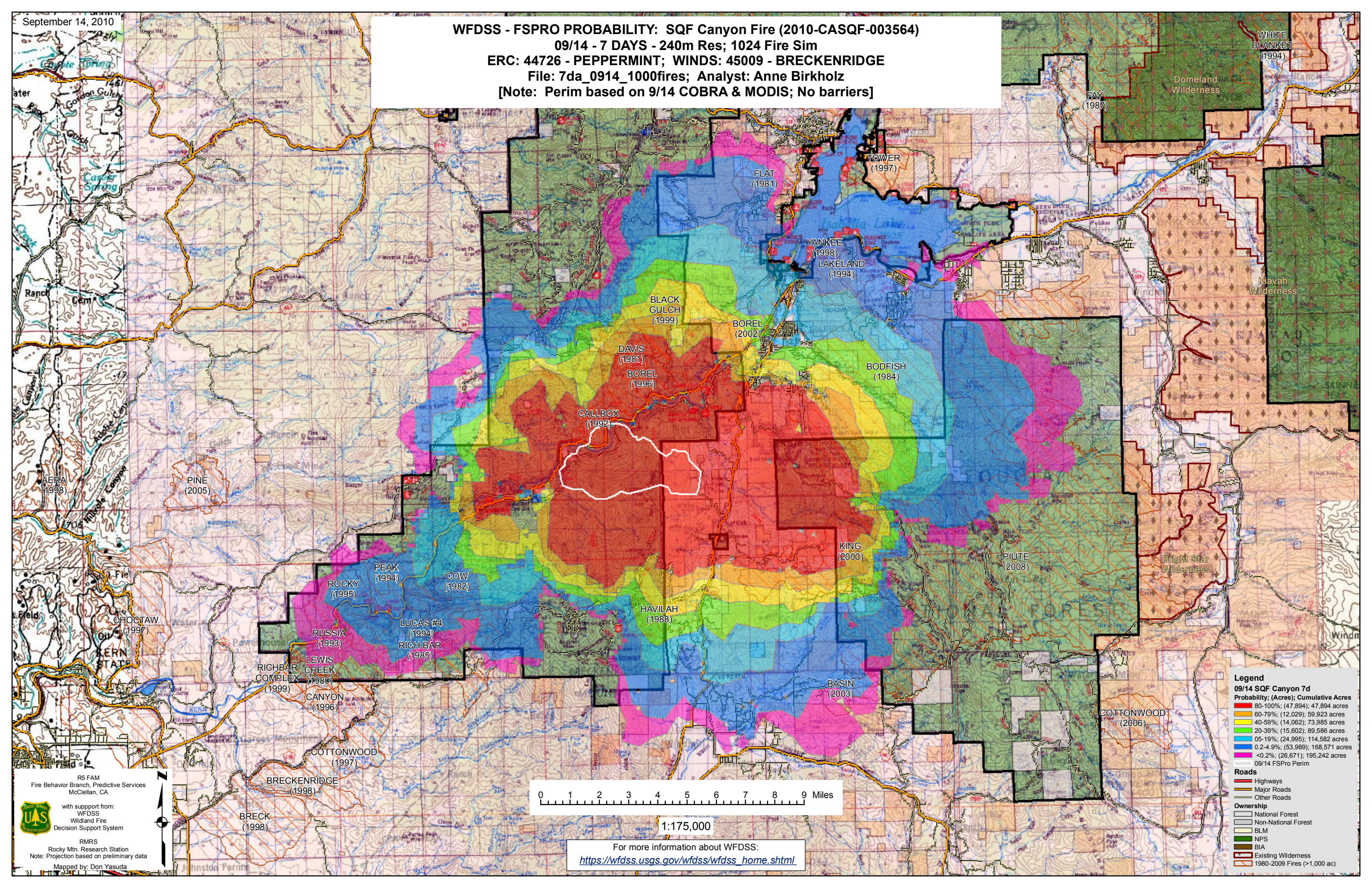


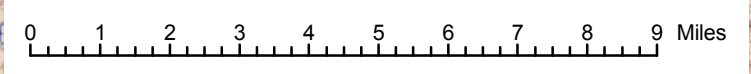
**WFDSS - FSPRO PROBABILITY: SQF Canyon Fire (2010-CASQF-003564)**  
09/14 - 7 DAYS - 240m Res; 1024 Fire Sim  
ERC: 44726 - PEPPERMINT; WINDS: 45009 - BRECKENRIDGE  
File: 7da\_0914\_1000fires; Analyst: Anne Birkholz  
[Note: Perim based on 9/14 COBRA & MODIS; No barriers]



R5 FAM  
Fire Behavior Branch, Predictive Services  
McClellan, CA

with support from:  
WFDSS  
Wildland Fire  
Decision Support System

RMRS  
Rocky Mtn. Research Station  
Note: Projection based on preliminary data  
Mapped by: Don Yasuda



For more information about WFDSS:  
[https://wfdss.usgs.gov/wfdss/wfdss\\_home.shtml](https://wfdss.usgs.gov/wfdss/wfdss_home.shtml)

**Legend**

**09/14 SQF Canyon 7d**  
Probability; (Acres); Cumulative Acres

80-100%	(47,894); 47,894 acres
60-79%	(12,029); 59,923 acres
40-59%	(14,062); 73,985 acres
20-39%	(15,602); 89,586 acres
05-19%	(24,995); 114,582 acres
0.2-4.9%	(53,989); 168,571 acres
<0.2%	(26,671); 195,242 acres

09/14 FSPro Perim

**Roads**

- Highways
- Major Roads
- Other Roads

**Ownership**

- National Forest
- Non-National Forest
- BLM
- NPS
- BIA
- Existing Wilderness
- 1980-2009 Fires (>1,000 ac)