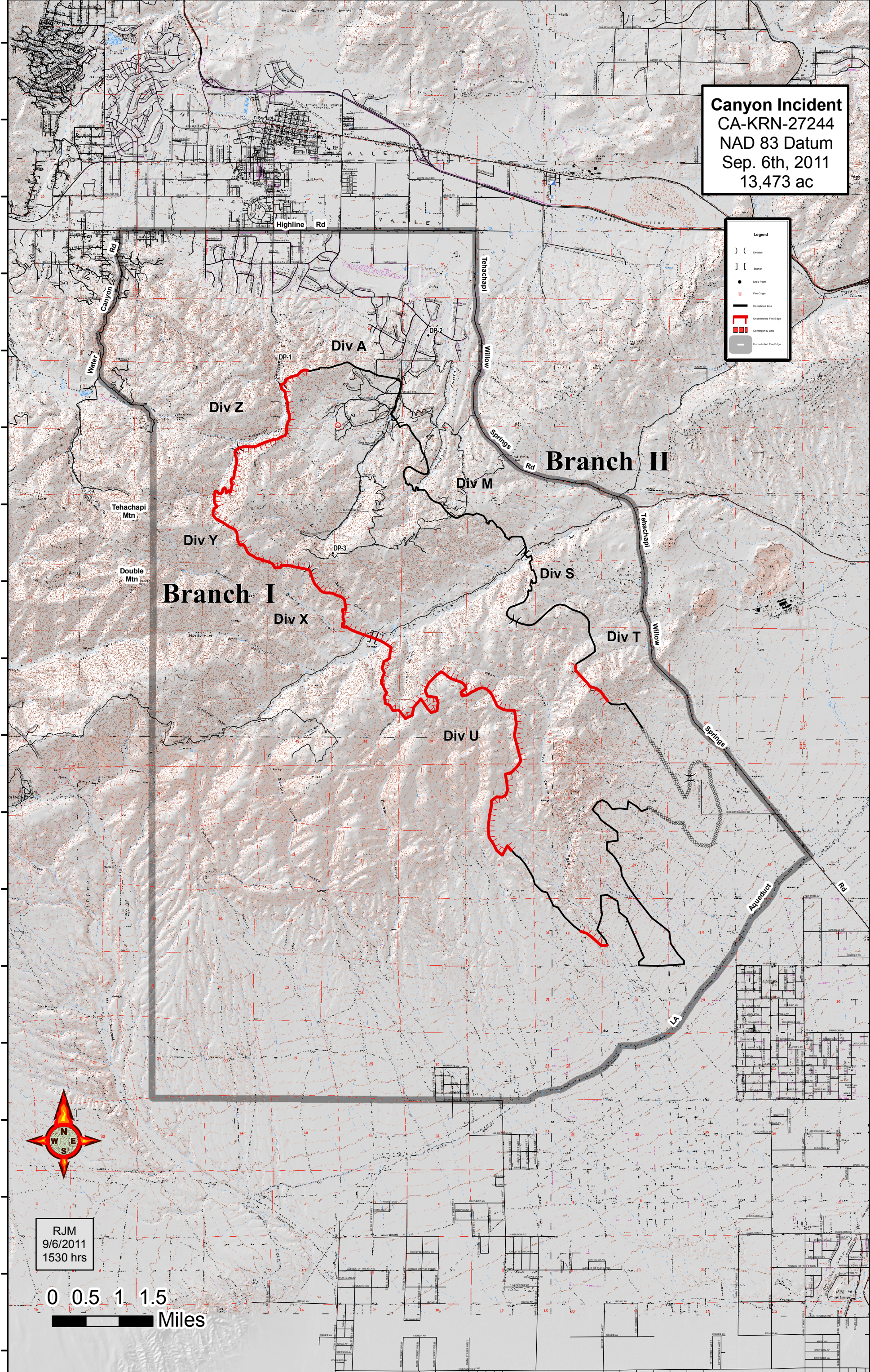


118°31'0"W 118°30'0"W 118°29'0"W 118°28'0"W 118°27'0"W 118°26'0"W 118°25'0"W 118°24'0"W 118°23'0"W 118°22'0"W 118°21'0"W 118°20'0"W 118°19'0"W 118°18'0"W



Canyon Incident
CA-KRN-27244
NAD 83 Datum
Sep. 6th, 2011
13,473 ac

Legend

- () Division
- [] Branch
- Check Point
- Fire Origin
- Completed Line
- Uncompleted Fire Edge
- Contiguity Line
- Uncompleted Fire Edge

Branch I

Branch II

Div A

Div Z

Div Y

Div X

Div U

Div M

Div S

Div T



RJM
9/6/2011
1530 hrs

0 0.5 1 1.5
Miles

118°31'0"W 118°30'0"W 118°29'0"W 118°28'0"W 118°27'0"W 118°26'0"W 118°25'0"W 118°24'0"W 118°23'0"W 118°22'0"W 118°21'0"W 118°20'0"W 118°19'0"W 118°18'0"W