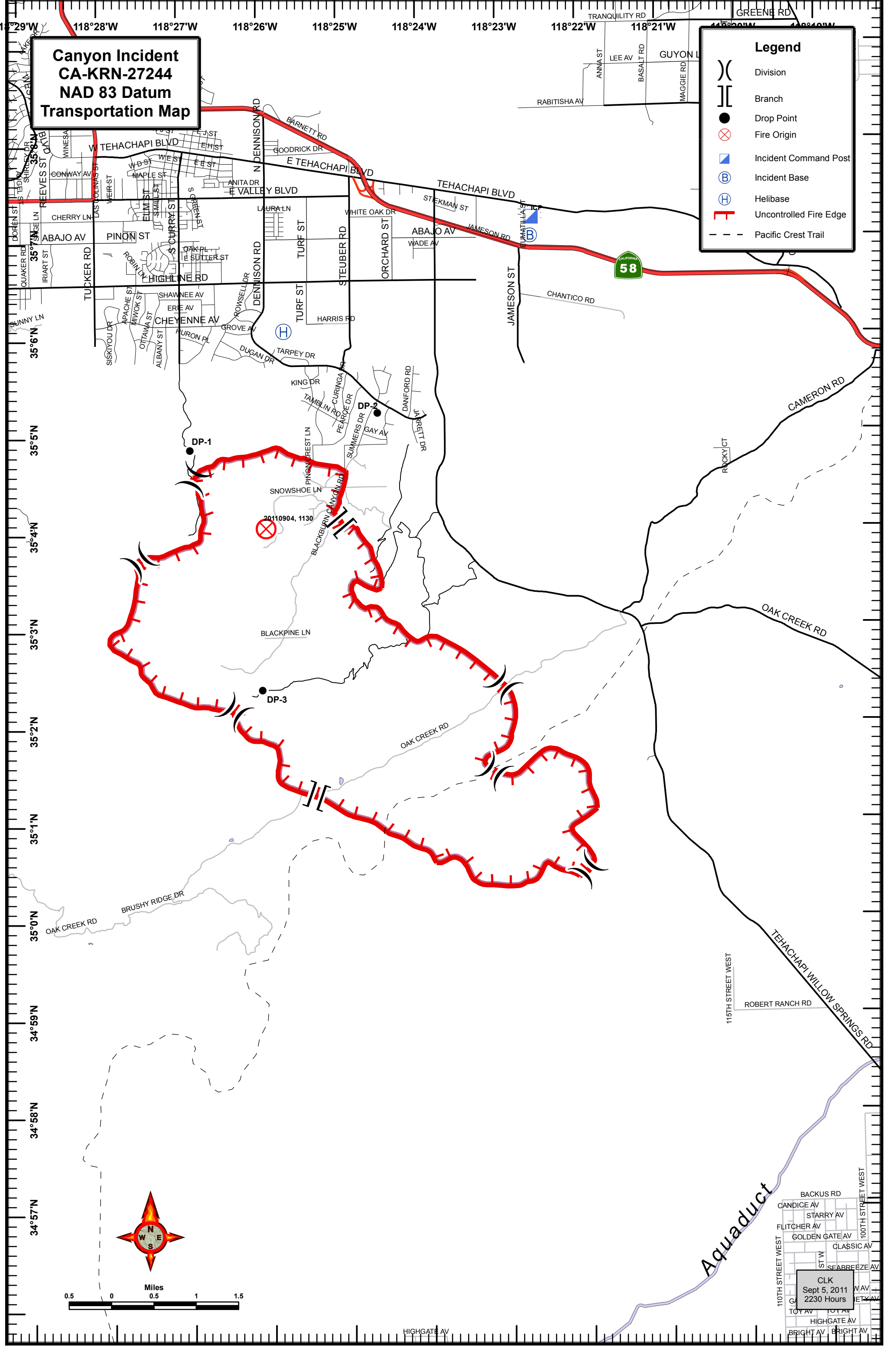


**Canyon Incident
CA-KRN-27244
NAD 83 Datum
Transportation Map**

Legend

- () Division
- || Branch
- Drop Point
- ⊗ Fire Origin
- ▣ Incident Command Post
- Ⓟ Incident Base
- Ⓜ Helibase
- ┌ Uncontrolled Fire Edge
- - - Pacific Crest Trail



CLK
Sept 5, 2011
2230 Hours