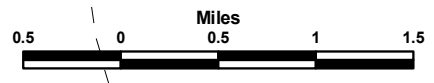
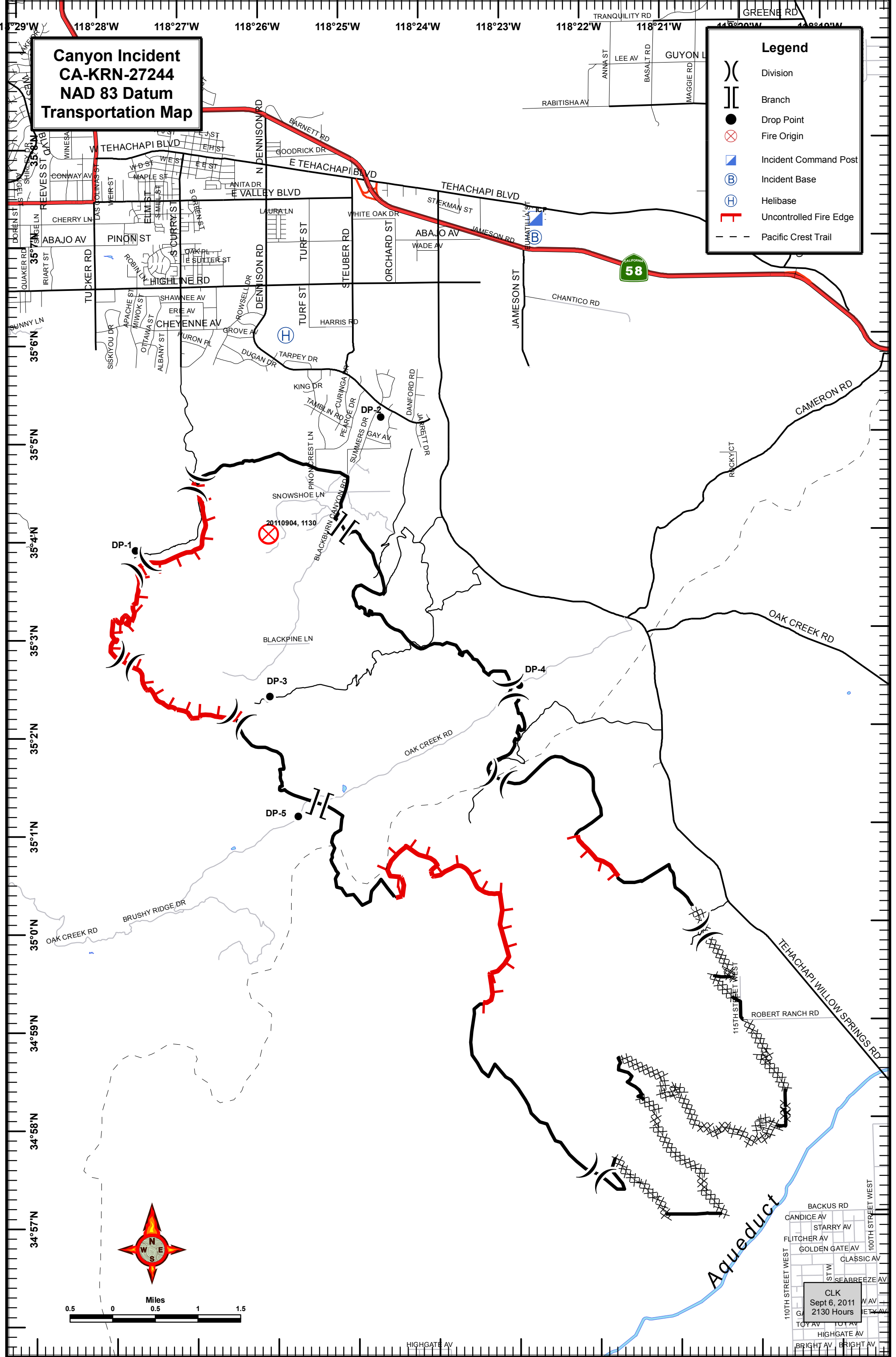


**Canyon Incident  
CA-KRN-27244  
NAD 83 Datum  
Transportation Map**

**Legend**

- ( ) Division
- [ ] Branch
- Drop Point
- ⊗ Fire Origin
- ▣ Incident Command Post
- Ⓟ Incident Base
- Ⓜ Helibase
- ┌ Uncontrolled Fire Edge
- - - Pacific Crest Trail



CLK  
Sept 6, 2011  
2130 Hours