

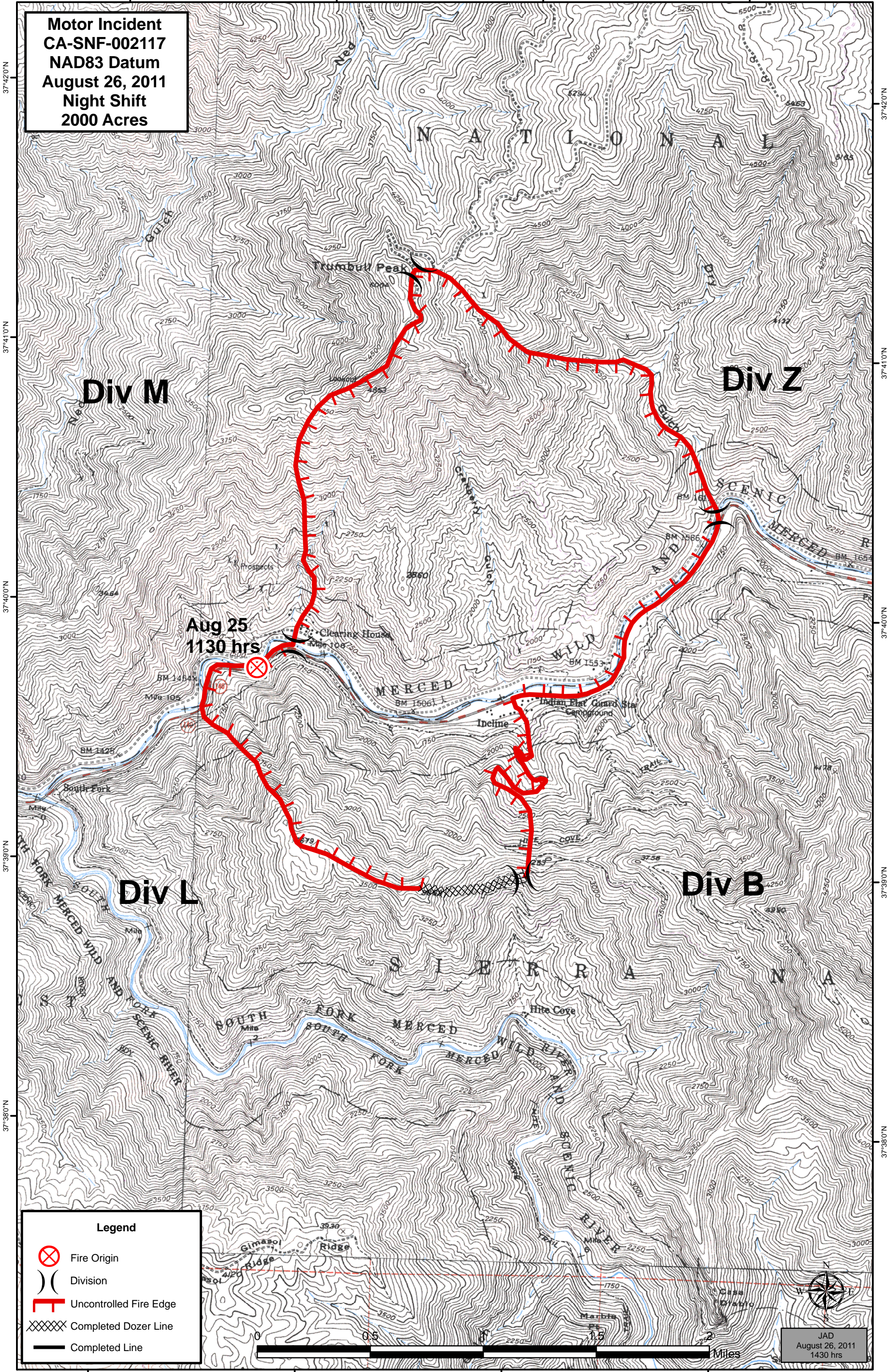
119°53'0"W

119°52'0"W

119°51'0"W

119°50'0"W

Motor Incident
CA-SNF-002117
NAD83 Datum
August 26, 2011
Night Shift
2000 Acres



37°42'0"N

37°41'0"N

37°40'0"N

37°39'0"N

37°38'0"N

37°42'0"N

37°41'0"N

37°40'0"N

37°39'0"N

37°38'0"N

119°53'0"W

119°52'0"W

119°51'0"W

119°50'0"W

Legend

- Fire Origin
- Division
- Uncontrolled Fire Edge
- Completed Dozer Line
- Completed Line

JAD
 August 26, 2011
 1430 hrs