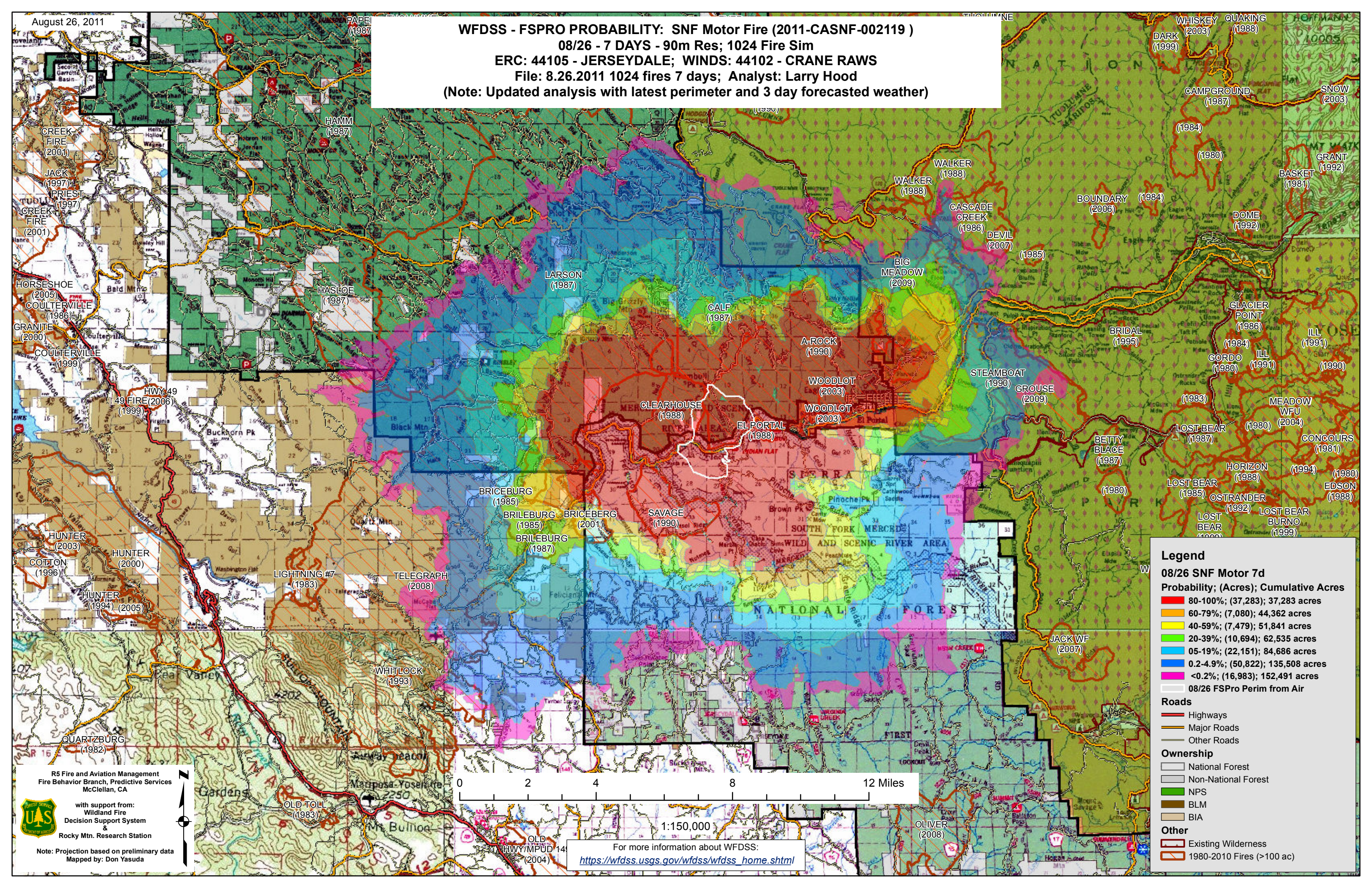


August 26, 2011

WFDSS - FSPRO PROBABILITY: SNF Motor Fire (2011-CASNF-002119)
08/26 - 7 DAYS - 90m Res; 1024 Fire Sim
ERC: 44105 - JERSEYDALE; WINDS: 44102 - CRANE RAWS
File: 8.26.2011 1024 fires 7 days; Analyst: Larry Hood
(Note: Updated analysis with latest perimeter and 3 day forecasted weather)



Legend

08/26 SNF Motor 7d
Probability; (Acres); Cumulative Acres

- 80-100%; (37,283); 37,283 acres
- 60-79%; (7,080); 44,362 acres
- 40-59%; (7,479); 51,841 acres
- 20-39%; (10,694); 62,535 acres
- 05-19%; (22,151); 84,686 acres
- 0.2-4.9%; (50,822); 135,508 acres
- <0.2%; (16,983); 152,491 acres

Roads

- Highways
- Major Roads
- Other Roads

Ownership

- National Forest
- Non-National Forest
- NPS
- BLM
- BIA

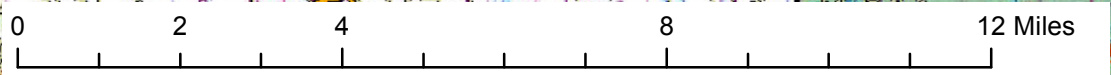
Other

- Existing Wilderness
- 1980-2010 Fires (>100 ac)

R5 Fire and Aviation Management
Fire Behavior Branch, Predictive Services
McClellan, CA

with support from:
Wildland Fire
Decision Support System
&
Rocky Mtn. Research Station

Note: Projection based on preliminary data
Mapped by: Don Yasuda



For more information about WFDSS:
https://wfdss.usgs.gov/wfdss/wfdss_home.shtml

