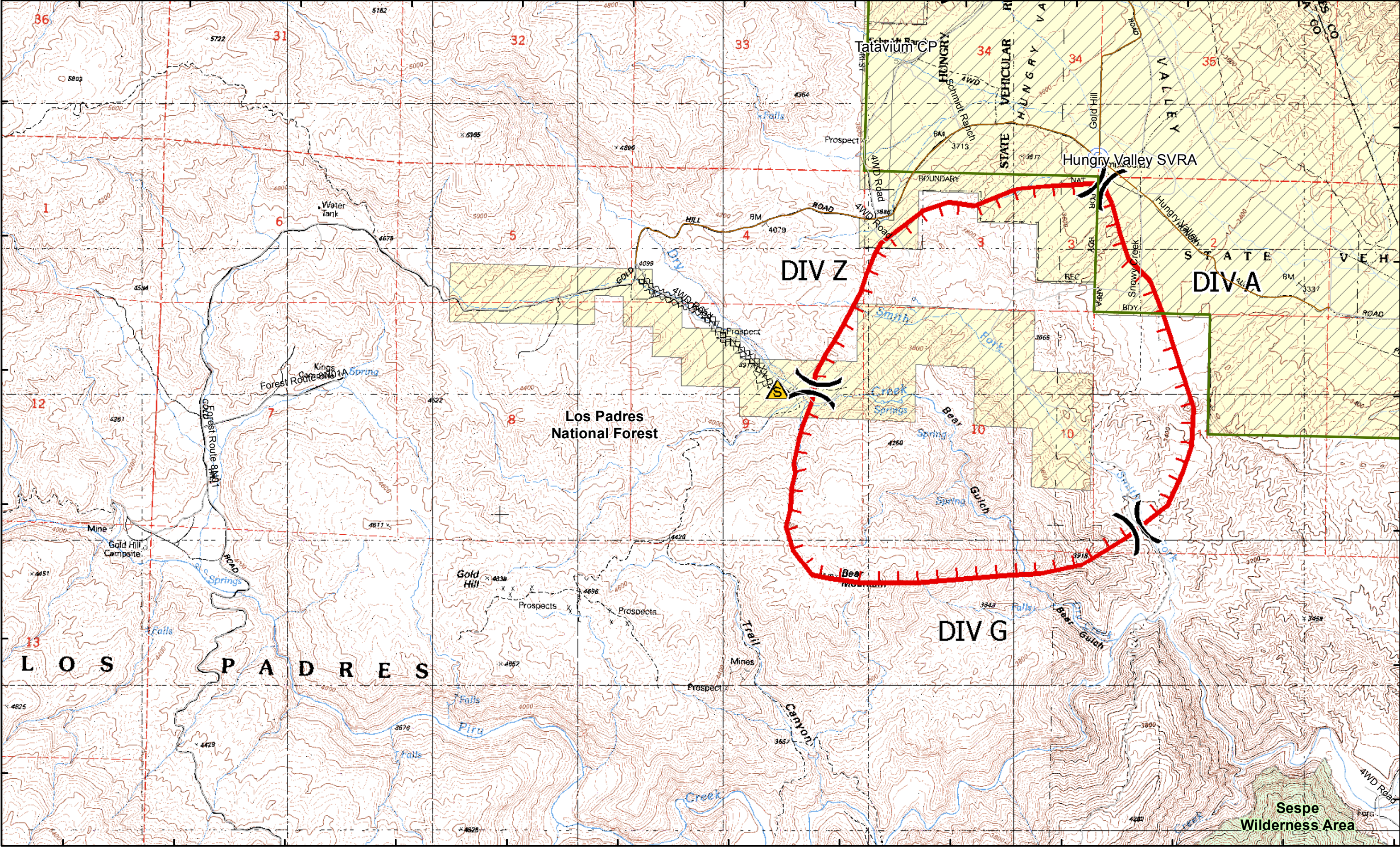


118°57'0"W 118°56'30"W 118°56'0"W 118°55'30"W 118°55'0"W 118°54'30"W 118°54'0"W 118°53'30"W 118°53'0"W 118°52'30"W 118°52'0"W 118°51'30"W

34°44'0"N
34°43'30"N
34°43'0"N
34°42'30"N
34°42'0"N
34°41'30"N








34°44'0"N
34°43'30"N
34°43'0"N
34°42'30"N
34°42'0"N
34°41'30"N

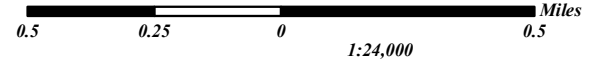


CA-LPF-1505
Night Shift 1800
June 24, 2012

Hill Fire

Los Padres National Forest

-  Incident Command Post
-  Staging Area
-  Drop Point
-  Uncontrolled Fire Edge
-  Helibase
-  Completed Dozer Line
-  Division Break



1:24,000



d:\collins\20120624_1100